



Jobseeker News

A MONTHLY NEWSLETTER FOR MONO COUNTY JOBSEEKERS AND EMPLOYERS

CONTACT US

Mammoth Lakes
1290 Tavern Road
PO BOX 2969
Mammoth Lakes, CA
760-924-1770

Bridgeport
37 Emigrant St.
Bridgeport, CA
760-932-5600

Walker
107384 HWY 395
Walker, CA
530-495-1263

www.monocounty.ca.gov

Employment Service Workers

Alex Amador
aamador@mono.ca.gov

Adylene Figueroa
afigueroa@mono.ca.gov

Pedro Figueroa
pfigueroa@mono.ca.gov

Cindy Pina
cpina@mono.ca.gov

RECENT NEWS

CalFresh Awareness Month

A little help makes a big difference. CalFresh helps you buy groceries when you're out of work or working less.

Contact: Health and Human Services - 1290 Tavern Rd. Mammoth Lakes, 760-924-1770 or apply online at BenefitsCal.com

HOW DOES CALFRESH WORK?

You get money for groceries on an easy-to-use card each month. Use it like a debit card in stores or online. At checkout, just swipe your CalFresh card, pick EBT, and enter your PIN.

HOW TO APPLY?

Apply for CalFresh in three easy steps:

1. Answer some short questions and submit a few documents at CalFreshFood.org, or call 1-877-847-3663.



2. Have a short phone interview with a CalFresh representative.



3. If you're accepted, your CalFresh card will arrive within 30 days.



CalFresh Awareness Month

A LITTLE HELP MAKES A BIG DIFFERENCE!

WHERE CAN YOU USE CALFRESH?

Use your CalFresh Food benefits at most of your favorite stores, nearby and online.

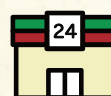


GROCERY STORES

CalFresh is accepted at many of the grocery stores where you already shop.

FARMERS MARKETS

Double your dollars when you use CalFresh at participating farmers markets.



CONVENIENCE STORES

Use CalFresh at the corner store to pay for quick snacks and meals on the go.

PICKUP OR DELIVERY

Order groceries online and get them whichever way is best for you.

Delivery fees are not covered by CalFresh.



NOTICIAS RECIENTES

Mes de Concientización Sobre CalFresh

Una pequeña ayuda hace una gran diferencia. CalFresh te ayuda a comprar alimentos cuando no trabajas o trabajas menos.

Contacto: Salud y Servicios Humanos - 1290 Tavern Rd. Mammoth Lakes, 760-924-1770 o solicite en línea en BenefitsCal.com



UN POCO DE AYUDA HACE UNA GRAN DIFERENCIA

CalFresh te ayuda a comprar alimentos cuando estás sin empleo o trabajando menos.






¿CÓMO FUNCIONA CALFRESH?

Recibes dinero para comprar comida cada mes en una tarjeta fácil de usar. Úsala como una tarjeta de débito en tiendas o en línea. Al pagar en caja solo desliza tu tarjeta CalFresh, escoge EBT, e ingresa tu PIN.

¿CÓMO PUEDO APLICAR?

Solicita CalFresh en tres pasos fáciles:

-  Responde unas preguntas breves y entrega algunos documentos en CalFreshFood.org, o llama al 1-877-847-3663 (FOOD)
-  Ten una entrevista telefónica corta con un representante CalFresh.
-  Si eres aceptado, tu tarjeta CalFresh te llegará dentro de 30 días.

¿DÓNDE PUEDES USAR CALFRESH?

Usa tus beneficios de CalFresh Food en la mayoría de tus tiendas favoritas, cercanas o en línea.

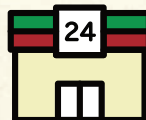


SUPERMERCADOS

Se acepta CalFresh en muchas cadenas de supermercado en donde ya haces tus compras.

MERCADOS DE AGRICULTORES

Duplica tus dólares cuando usas CalFresh en tianguis participantes.



TIENDAS DE ABARROTES

Usa CalFresh en las tiendas de barrio para pagar por snacks rápidos o comidas a la carrera.

PARA RECOGER O PARA ENTREGA EN CASA

Pide tus alimentos en línea y recíbelos de la manera que más te convenga.

Los costos por envío no son cubiertos por CalFresh.

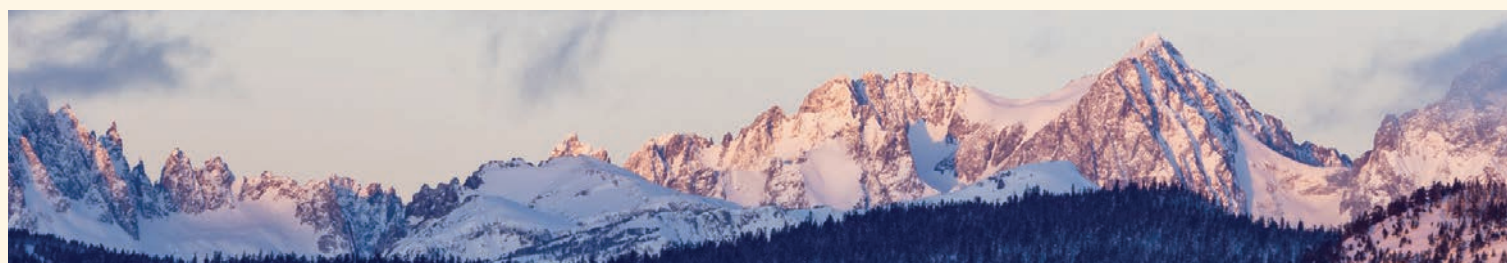


Más de 2 millones de personas como tú son elegibles para CalFresh, y no han aplicado.

Aprende más acerca del proceso de aplicación de CalFresh hoy. Visita CalFreshFood.org

Financiado por USDA, un proveedor y empleador que ofrece igualdad de oportunidades.

CONTÁCTANOS:



JOB OF THE MONTH



The County is hiring! Join a great team and make a difference in your community while earning a competitive wage with great benefits.

Mono County: Fiscal Technical Specialist I/II/III/IV

Location: Mammoth Lakes

Salary: \$45,462 – \$74,318/year

Info: Perform a variety of special account, statistical, document processing, and technical record keeping and support work; learn policies and requirements and review fiscal records, applications, or specialized documents and information, assisting the public and/or other County staff with the accuracy and completeness of the information; assist others with the understanding of department/work unit procedures and requirements; provide a variety of information about department/work unit services and functions; perform a variety of technical and office support work; and do related work as required.



Knowledge and Skills:

- Financial and statistical record keeping.
- Maintenance of files and information retrieval systems.
- Good public relations techniques.
- Modern office methods.
- English usage, spelling, grammar, and punctuation.
- Mathematics.

Benefits: Mono County provides generous benefits, including CalPERS retirement, medical, dental, vision & 401 deferred compensation. More information available at monocounty.ca.gov/hr/page/benefits

More Information and To Apply: Visit monocounty.ca.gov/jobs



MONO COUNTY POSTINGS

• Recreation Data Technician Bridgeport

Salary: \$39,208 – \$47,652/year
Info: Assist in data collection that will be of use in recreation program operation and planning for the Recreation Division and other County departments. Part-time seasonal position.

• Recreation Steward County-wide

Salary: \$21.86 – \$26.57/hour
Info: Part-time seasonal position.

• Case Manager (Bilingual-Spanish) Mammoth Lakes

Salary: \$48,958 – \$69,012/year
Info: Perform a wide range of duties to assess client needs; to plan, implement and evaluate treatment plans for clients receiving mental health, child and adult abuse, and/or alcohol and drug services; to assist in the rehabilitation of individuals.

• Business Operations Manager Bridgeport/Mammoth Lakes

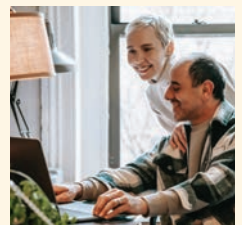
Salary: \$95,361 – \$115,912/year
Info: Provide end user technical support and training on core technology systems and infrastructure.

To Apply: governmentjobs.com/careers/monocountyca



SUBSCRIBE TO THE JOBSEEKER EMAIL NEWSLETTER!

Never miss an update! Sign up for our monthly Jobseeker News e-newsletter to receive up-to-date information straight to your phone or computer. Visit our Mailchimp signup form at eepurl.com/hGEkAz or scan the QR code to subscribe.



JOB BOARD POSTINGS

Mammoth Lakes Tourism: Marketing Coordinator Mammoth Lakes

Salary: \$25 - \$30/hour DOE

Info: Support marketing programs and special events, partner outreach, and administrative functions. Click [here](#) for details.

To Apply: Email swinters@visitmammoth.com

Butner HOA Services: Mammoth Lakes

- **Bookkeeper**

Info: Full-time position. Experience preferred but willing to train the right candidate.

- **Customer Service Representative**

Info: Full-time position. Benefits available.

To Apply: Email info@butnerhoaservices.com

Crowley Lake Store: Cashier/Customer Service Crowley Lake

Salary: \$17.50 - \$20/hour

Info: Full-time position with a varied schedule.

To Apply: Visit [simplyhired.com](https://www.simplyhired.com) and search for Crowley Lake.

Mammoth Ready Mix: Driver Mammoth Lakes

Salary: \$40/hour

Info: Full-time with great benefits. Free housing if needed.

To Apply: [mammothreadymix.com](https://www.mammothreadymix.com)

Mammoth Creek Inn: Mammoth Lakes

- **Front Desk Clerk**

Salary: \$17.50 - \$21/hour

Info: Part-time evening work.

- **On-site Manager**

Salary: \$17.50 - \$20/hour

Info: On-site studio provided.

To Apply: Visit [simplyhired.com](https://www.simplyhired.com) and search for Mammoth Creek Inn.

High Country Lumber: Mammoth Lakes

- **Cashier/Customer Service**

Info: Full-time, great benefits.

- **Lumber Yard Associate**

Salary: \$18 - \$19/hour

Info: Some forklift operating experience is preferable.

To Apply: JoshR@highcountrylumber.com

The Westin Monache: Mammoth Lakes

- **Front Office Representative**

Salary: \$21 - \$22.50/hour

Info: Year round position with benefits.

- **Housekeeping Stock Clerk**

Salary: \$20/hour

Info: Full-time position with benefits. Shifts vary based on occupancy. Night shifts will be available.

To Apply: [mammothmountain.com/about/jobs](https://www.mammothmountain.com/about/jobs)

More Jobs: www.monocounty.ca.gov/workforce-services/page/job-boards-links

Buckingham Property Management: Apartment Manager Mammoth Lakes

Salary: \$25/hour

Info: Oversight of the daily operations of a multi-resident Affordable Housing apartment complex.

To Apply: careers@buckinghampm.com

Mono Inn: Bartender/Bar Manager Mono Lake

Salary: \$25/hour

Info: We are seeking a Bartender/Bar Manager ready to take charge and create innovative and delicious seasonal cocktails. Full-time with flexible schedule.

To Apply: [monoinn.com/join-our-team](https://www.monoinn.com/join-our-team)

Mammoth Mountain: Bike Technician Mammoth Lakes

Salary: \$20 - \$21.47/hour

Info: Summer seasonal position. Experience in bike industry preferred.

To Apply: [mammothmountain.com/about/jobs](https://www.mammothmountain.com/about/jobs)

Nomadness Rentals: Maintenance Technician Mammoth Lakes

Salary: \$24 - \$27/hour

Info: Oversee the maintenance and repairs of our vacation rental properties. Hands-on approach to tasks, as well as the ability to communicate effectively.

To Apply: [indeed.com](https://www.indeed.com) and search for Mammoth Lakes.

JOB BOARD POSTINGS

Whitebark Institute: Mammoth Lakes

• **Forest Health Program Manager**
Salary: \$95,000 - \$115,000/year

• **Environmental Planner**
Salary: \$80,000 - \$110,000/year

Info: Whitebark Institute is a nonprofit organization focused on improving the health of Eastern Sierra forests. Benefits available.

To Apply: whitebarkinstitute.org/get-involved/employment

Mammoth Mountain: Various Positions Mammoth Lakes

Salary: \$20+/hour

Info: Full-time and seasonal jobs.

To Apply: mammothmountain.com/about/jobs

Town of Mammoth Lakes: Various Positions Mammoth Lakes

Info: Seasonal and year round positions available.

To Apply: governmentjobs.com/careers/townofmammothlakes

Luttrell Staffing Group: Bishop and Mammoth Lakes

• **Member Services Manager II**
Salary: \$68,640 - \$92,000/year
Info: Direct and administer operational effort of Credit Union branch.

• **Member Service Representative**
Salary: \$18/hour
Info: Processing financial transactions and customer service.

• **Front Desk Receptionist**
Salary: \$22 - \$25/hour
Info: Customer service and admin.

To Apply: luttrellstaffing.com

HEALTH RESOURCES

California Health Care Options

Clinics to help customers within Mono County:

- Selecting a managed care plan
- In-person presentations and education
- Changing plans, providers or plan partners
- Online and telephone enrollments
- Dual eligible information and navigation
- Exemptions forms
- Specialty care services
- Medical information and free resources

Clínicas para ayudar a los clientes dentro del condado de Mono:

- Seleccionar un plan de atención administrada
- Presentaciones y educación en persona
- Changing plans, providers or plan partners
- Cambiar de plan, proveedor o socio del plan
- Información y navegación de doble elegibilidad
- Formularios de exenciones
- Servicios de atención especializada
- Información médica y recursos gratuitos



Updating PCP



Enrollment Services



Requesting ID Cards

Customer Service

CLINIC DETAILS:

Every **Wednesday and Thursday 9:00am - 4:00pm**
Todos los **Miércoles y Jueves de 9:00am - 4:00pm**
Walk-ins welcome/Bienvenidos sin cita previa

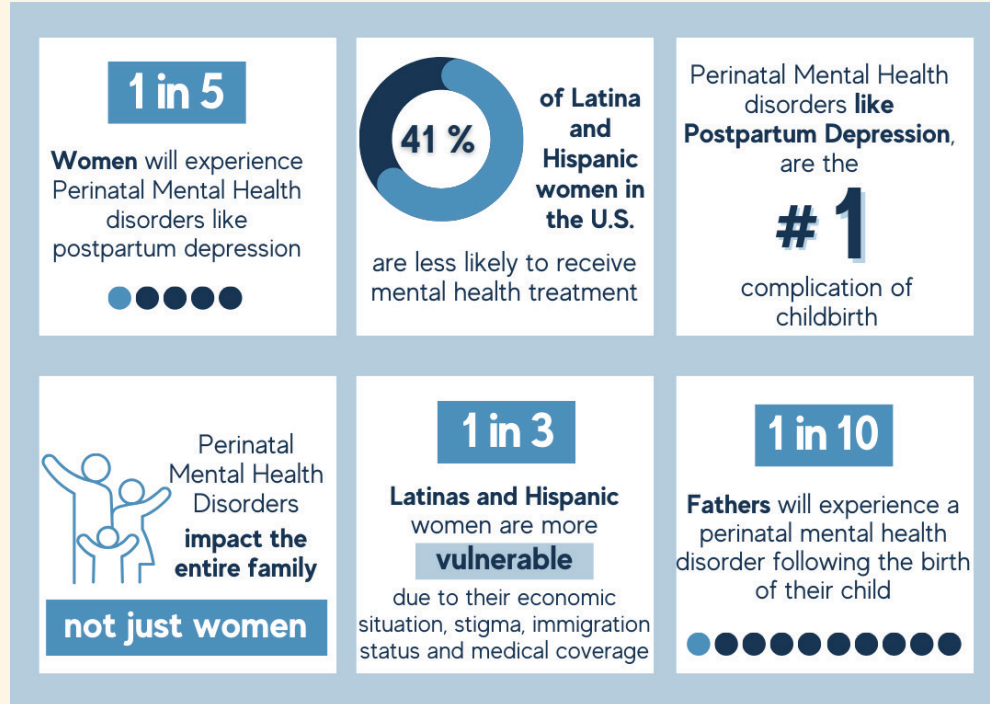
Check in front desk/Regístrese en recepción
Mono Civic Center
1290 Tavern Rd Suite 229, Mammoth Lakes

Contact/Contacto:
Health Care Option Representative
Brittney Beery: 760-924-1770

Perinatal Mental Health/Salud Mental Perinatal

Help us raise awareness about perinatal mental health and make our free support services and resources more accessible to the women who need them.

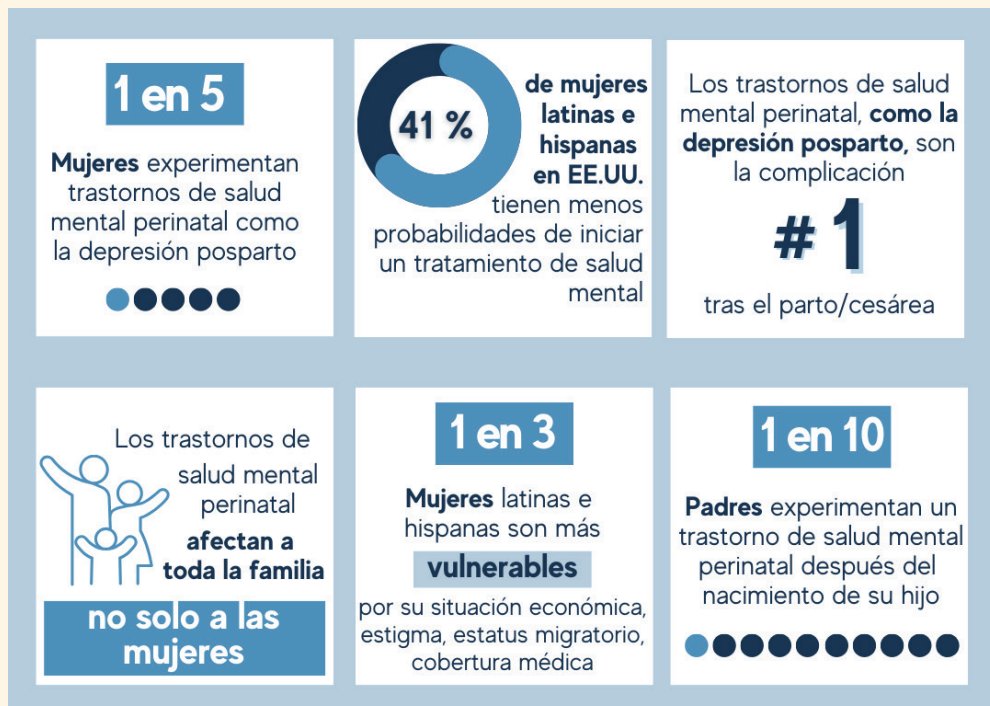
For more information visit: postpartum.net



GET HELP
Call the PSI HelpLine:
1-800-944-4773
#1 En Español or #2 English

Ayúdanos a crear conciencia sobre la salud mental perinatal y a acercar nuestros servicios y recursos de apoyo gratuitos a las mujeres que los necesitan.

Para más información visite: postpartum.net



OBTENER AYUDA
Llame al:
1-800-944-4773
#1 En Español or #2 English

EDUCATION AND EMPLOYMENT RESOURCES

MAMMOTH LAKES FOUNDATION

Student Scholarships Available



Tuition & Textbook Scholarship

A maximum of \$500 each semester toward required textbooks and materials for enrolled courses (excludes software).

100% of in-state enrollment fees (if applicant is not eligible for other aid through FAFSA or EOPS).



FREE Community College at Cerro Coso's Mammoth Campus

- Mono County resident (1-year min.)
- OR
- Mono County High School Graduate

Scholarship Requirements

- Enroll in at least one course at Cerro Coso Community College.
- Meet with counseling for assistance in selecting courses and educational planning to determine your pathway to a certificate or associate degree.
- Maintain at least 2.5 GPA each semester.
- Complete 10 hours of volunteer service for your community each semester.
- Complete a simple online check-in form weekly with the Scholarship Coordinator throughout the semester.
- Attend monthly MLF scholarship brunches, typically held the last Friday of each month.
- Participate in scheduled scholarship check-ins/one-on-one discussions with MLF staff as appropriate.
- Conduct yourself with integrity and behavior conducive to the values of MLF.
- Check your Cerro Coso email account regularly for correspondence from Cerro Coso and MLF.
- Must reapply each semester.

Dave & Roma McCoy's
Mammoth Lakes Foundation



mammothlakesfoundation.org/scholarship-applications

For more information about the MLF Scholarship programs, please contact Scholarship Coordinator Elizabeth Root.
elizabeth@mammothlakesfoundation.org
760-934-3781



Student Housing Scholarship

The Mammoth Lakes Foundation may award up to six (6) student Housing Scholarships on a semester basis when housing space is available at the South Gateway Student Apartments (SGA).

South Gateway Student Apartments



What does the scholarship include?

In conjunction with South Gateway Apartments, Mammoth Lakes Foundation is awarding the following housing scholarships towards rent in a shared one-bedroom at South Gateway Apartments: Semester Award: \$300 credit toward rent, each month; up to \$1,200 total per semester.



HOW TO APPLY

- » Complete an application for student housing at <https://www.mammothstudentapartments.com>
- » Receive confirmation from SGSA Manager shared one-bedroom is available
- » Apply for Mammoth Lakes Foundation Housing Scholarship (Must reapply each semester)



For more information about the MLF Scholarship programs, please contact Scholarship Coordinator Elizabeth Root.
elizabeth@mammothlakesfoundation.org
760-934-3781



The Workforce Innovation Act (WIOA) partnered with the American Job Center is providing FREE training.

Build your skills and prepare for your next job with SkillUp America programs.



SCAN QR CODE above for more
information about SkillUp or to register visit:
kerncounty.metrixlearning.com

**KERN EMPLOYERS'
COUNTY TRAINING
RESOURCE**
A proud partner of America's Job Center

americanjobcenter®

Benefits of e-learning

- No tuition or travel costs
- Brush up on skills to prepare for better employment
- Convenient and accessible 24/7 from anywhere
- Matches your skill levels and learning pace
- Take as many courses as you like for 6 months
- Weekly virtual sessions using your training portal on Tuesdays 4:00pm and Thursdays 11:00am.

Course Topics

- Computers
- Internet
- Microsoft Office
- Management
- Leadership
- Finance
- Math and more!

Human Resources Assistance

GOT HR QUESTIONS? WE'VE GOT THE ANSWERS.

Call Your FREE HR Hotline Now!

888-201-5817



The Employers' Training Resource Hotline has partnered with the California Employers Association to provide Kern, Inyo, and Mono County Employers with a **FREE HR HOTLINE**.

**PROTECT YOUR
BUSINESS FROM COSTLY
FINES AND PENALTIES.**

**PICK UP THE PHONE AND
CALL 888-201-5817**

WE ARE HERE TO HELP!



**KERN EMPLOYERS'
COUNTY TRAINING
RESOURCE**
A proud partner of America's Job Center

America's Job Center
of California™

FINANCIAL RESOURCES

FREE State Parks Passes

State Parks is providing free vehicle day-use entry to over 200 participating state park and beaches.

GOLDEN BEAR PASS FOR CALWORKS FAMILIES

Any CalWORKs family is eligible to receive the pass. Get out and enjoy the outdoors!

SCAN QR TO REGISTER!

Or visit: cdss.ca.gov/goldenbearpass



CALIFORNIA PUBLIC LIBRARY CARD HOLDERS

California public library card holders can check out the The California State Library Parks Pass at their library. For more information visit www.parks.ca.gov/?page_id=30806 or call Mono County Libraries at 760-934-8670.

Enroll in Low-cost Internet!

You may qualify for low-cost internet if you are participating in one the following programs:

- CalFresh
- Lifeline
- Medi-Cal or Supplemental Security Income
- NSLP (Free or reduced School Lunch Program)
- Pell Grant

For More information visit internetforallnow.org or call 888-423-0526.

Learning Digital Skills is FREE and EASY with DigitalLearn, visit: getconnected.digitallearn.org

¡Inscríbasa Hoy Internet de Bajo Costo!

Usted puede calificar para Internet residencial de bajo costo si participa en uno de estos programas de asistencia:

- CalFresh
- Lifeline
- Medi-Cal o Seguridad de Ingreso Suplementario
- NSLP (Programa de Comidas Escolares Gratuitas o Reducidas)
- Beca Pell

Para obtener más información, visite internetforallnow.org o llame al 888-423-0526.

Aprender habilidades digitales es GRATIS y FACIL con DigitalLearn: getconnected.digitallearn.org





NEW EBT CHIP/TAP CARD

TAP OR INSERT TO AVOID THE TRAP

Protect yourself from skimming theft. TAP to avoid the trap!

Chip/Tap lets you pay by tapping the card to the terminal or inserting the chip. You just tap or insert your card, enter your PIN, and that's it! It's a quick and safer way to use your EBT card.



- **Use at your local EBT merchant.**
- **Look for the contactless icon.**
- **Tap or insert your card and enter your pin.**

Check your mailbox often for your new card. You do not need to visit a County office to receive your card, and do not need call to activate your new card. All existing benefits will transfer automatically to your new EBT card and your PIN will stay the same.

- **All personal information has been moved to the back of your new card.**
- **A card expiration date and Card Security Code (CSC) have been added to increase card security.**
- **The expiration date is for the card only and does not represent your benefits expiration or expungement.**

Some EBT retailers may not accept tap or chip features at this time. Please try to use tap or chip feature first and then swipe if prompted.

COMING EARLY 2025

**IF YOU HAVE QUESTIONS, PLEASE CONTACT THE
EBT CUSTOMER SERVICE HELPLINE (877) 328-9677**

PUB 531 (12/24)

CDSS
CALIFORNIA
DEPARTMENT OF
SOCIAL SERVICES



NUEVA TARJETA EBT DE TOQUE/CON CHIP

INTRODUZCA O TOQUE CON LA TARJETA PARA EVITAR LA TRAMPA

Protéjase del robo por clonación. ¡TOQUE CON la tarjeta para evitar la trampa!

Las tarjetas de toque/con chip le permiten pagar tocando la tarjeta a la terminal o introduciendo el chip. Solamente introduzca o toque con su tarjeta, ingrese su PIN, y ¡listo! Es una forma rápida y segura para utilizar su tarjeta EBT.



- **Utilícela en su comerciante EBT local.**
- **Busque el ícono de pago sin contacto.**
- **Introduzca o toque con su tarjeta e ingrese su PIN.**

Revise su buzón con frecuencia para saber si llegó su nueva tarjeta. No necesita visitar una oficina del condado para recibir su tarjeta y no necesita llamar para activar su nueva tarjeta. Todos los beneficios existentes se transferirán de manera automática a su nueva tarjeta EBT y su PIN seguirá siendo el mismo.

- **Toda la información personal se ha movido al reverso de su nueva tarjeta.**
- **Se ha agregado una fecha de vencimiento de la tarjeta y un código de seguridad de la tarjeta (CSC) para aumentar la seguridad de la tarjeta.**
- **La fecha de vencimiento es solamente para la tarjeta y no representa el vencimiento o eliminación de sus beneficios.**

Es posible que algunos minoristas de EBT no acepten funciones de toque o con chip en este momento. Intente utilizar la función de toque o de chip de su tarjeta y luego deslícela si se le solicita.

**PRÓXIMAMENTE
A PRINCIPIOS
DE 2025**

**SI TIENE PREGUNTAS, COMUNÍQUESE CON LA
LÍNEA DE AYUDA DE SERVICIO AL CLIENTE
DE EBT AL (877)328-9677**

CDSS
CALIFORNIA
DEPARTMENT OF
SOCIAL SERVICES

COMMUNITY EVENTS

Free Chalfant Bingo

Join Mono County Senior Services for an afternoon of fun bingo in Chalfant.

- Free refreshments!
- Fun and prizes!
- All welcome!

The Details:

May 15, 3:00pm - 5:00pm
Chalfant Community Center

For more information call DSS
760-582-5250

MONO COUNTY SENIOR SERVICES PRESENTS



May 15 @ 3pm - 5pm
Chalfant Community Center

Free Yoga in Chalfant

Free yoga in Chalfant every Tuesday 4:00pm - 5:00pm and Thursday from 11:00am - 12:00pm.

FREE YOGA CLASSES AT THE CHALFANT COMMUNITY CENTER!

Tuesdays 4:00-5:00pm
Thursdays 11:00am-12:00pm

- Adults and mature teens of all levels and abilities welcome!
- Chair yoga pose options offered!
- No child care provided.
- Dress comfortable and bring a mat!
- Questions? Call 760-924-1770



CLASES DE YOGA GRATIS EN EL CENTRO COMUNITARIO DE CHALFANT

Martes 4:00-5:00pm
Jueves 11:00am-12:00pm

- Adultos y adolescentes maduros de todos los niveles y habilidades son bienvenidos
- Se ofrecerá opción de pose de yoga en silla
- No se ofrece cuidado de niños
- Vista con ropa cómoda y traiga un tapete de ejercicio
- Si tiene preguntas llame al 760-924-1770

Instructor:
Lauren Robinson
Owner, Sierra Shanti
Yoga Studio in Bishop



Program sponsored
by Mono County Public Health,
Tobacco Education
& Social Services

**123 Valley Road
Chalfant Valley,
CA 93512**



Instructora:
Lauren Robinson
Dueña de Sierra Shanti
Studio de Yoga en Bishop

Patrocinado por El Condado
de Mono Salud Publica,
Programa de Tabaco y
Servicios Sociales.



FOOD RESOURCES

IMACA Drive-Thru Food Distribution in Mono County

Nobody should have to worry about their next meal. IMACA provides fresh produce and other staples to help people meet their nutritional needs.

Please complete an [Intake Form: www.imaca.net/food-intake-form](http://www.imaca.net/food-intake-form) at least one day before your distribution date. Please do not arrive any earlier than one hour before the distribution start time.

For more information visit imaca.net/food-distribution or call 760-873-8557.

May 2025 Mono County Drive-Thru Food Schedule

Benton Community Center:

58869 CA Hwy 120

May 6 — 10:00am-10:30am

Chalfant Fire Department:

215 Valley Rd.

May 6 — 11:30am-12:00pm

Walker Senior Center:

442 Mule Deer Rd.

May 22 — 10:00am-10:45am

Bridgeport Community Center:

129 Emigrant St.

May 22 — 12:30pm-1:00pm

Mammoth Lakes
St Joseph's Church:

58 Ranch Rd.

May 23 — 12:00pm-1:00pm

Lee Vining Community Center:

296 Mattly Ave.

May 27 — 10:30am-11:00am

June Lake Community Center:

90 W. Granite Ave.

May 27 — 1:00pm-1:30pm



Local Food Pantry

NOW TWO DAYS A WEEK!

Salvation Army in Mammoth Lakes
Open: Monday and Friday

4:00-5:30pm

Address: 220 Sierra Manor Road

Questions: 760-914-0245


We have eggs, milk, cheese, meat and bread.

Despensa de Comida Local

¡AHORA DOS DÍAS A LA SEMANA!

Salvation Army en Mammoth Lakes
Abierto: Lunes y Viernes

4:00-5:30pm

Dirección: 220 Sierra Manor Road

Preguntas: 760-914-0432

Nosotros tenemos huevos, leche, queso, carne y pan.



HOUSING RESOURCES

EASTERN SIERRA COMMUNITY HOUSING

Eastern Sierra Community Housing offers a variety of programs and resources for renting or home ownership.

Eastern Sierra Community Housing ofrece una variedad de programas y recursos para alquilar o propiedad de vivienda.

- Rent/alquilar: eschousing.org/rent
- Buy/comprar: eschousing.org/buy
- ESCH projects/proyectos: eschousing.org/our-projects

For more information/Para más información:

eschousing.org, 760-934-4740, 587 Old Mammoth Rd #4



OTHER RESOURCES

Otros Recursos:

- Town of Mammoth Lakes Housing Now! townofmammothlakes.ca.gov/1185/Housing-Now
- Mammoth Lakes Chamber of Commerce: mammothlakeschamber.org/workforce-housing-2
- Buckingham Property Management: 760-924-7516 buckinghampm.com/homes/bristlecone
- Blizzard Property Management: 760-934-4455 blizzardpm.com



UNEMPLOYMENT INSURANCE

Need Unemployment Insurance Assistance?

Public Statewide Online and Phone Unemployment Insurance (UI) Assistance:

edd.ca.gov/Unemployment/UI_Online.htm

- 1-800-300-5616 – UI Claims Support
- 1-833-978-2511 – General or Technical UI Support
- 1-866-333-4606 – Automated Self-Service UI Line

Public Local Kern, Inyo, and Mono (KIM) assistance with general UI guidance (from the Bakersfield AJCC/ EDD Workforce Services (WS) staff in Bakersfield):

- 661-336-6912 – Bakersfield AJCC/EDD line
- WSBAJCCreferralKERN@edd.ca.gov
- Bakersfield AJCC/EDD email

WORK INNOVATION AND OPPORTUNITY ACT

Updated Reimbursement of 50% of Wages to Employers

Are you an employer looking for help? The specific technical skills you need may be hard to find. The Workforce Innovation and Opportunity Act (WIOA) On-the-Job Training Program helps you train the right workers to meet your requirements.

This program assists employers with the costs of hiring and training new and advancing employees by offering financial reimbursement of up to 50% of the employee's wages during the training period.

This program is administered through Mono County Workforce Services. Contact: 760-924-1770 or workforceservices@mono.ca.gov before the employee is hired, or for any questions about the program.



WORKFORCE SERVICES

Let's Talk!

Please contact Workforce Services to discover more about the programs we provide.
We are here to help you succeed!

Call us at 760-924-1770 or visit:

www.monocounty.ca.gov/workforce-services



Photo: Brooke Cagle



Photo: Christin Hume



Photo: Jud Mackrill



Photo: Jakob Owens

CAREER SERVICES

Our Employment Service Workers are eager to assist and offer a variety of career related services.

- Résumé Building
- Interview Coaching
- Cover Letter Writing
- Career Counseling
- Job Search Assistance
- Community College Registration
- GED Training Referrals

RESOURCE ROOM

Do you need the use of a computer, internet, printer, copier, telephone or fax machine? We can help!

The Resource Room assistance is available to the public from 3pm to 5pm, Monday through Friday.

To receive assistance call 760-924-1770 and request employment services.

CALJOBS

Have you registered for CalJOBS?

CalJOBS is California's online resource to help job seekers and employers navigate the state's workforce services. You can search for jobs, create résumés, find qualified candidates, and more. Visit CalJOBS to register or log in.

www.caljobs.ca.gov

VETERANS SERVICES OFFICER

Gordon Greene

Office: 760-873-7850

Cell: 760-937-0431

ggreene@inyocounty.us

Please note that services offered through the Office of Veterans Affairs are for Veterans AND their families.

New Video Calling Services for the Hearing Impaired

Mono County Social Services has partnered with Sorenson to provide Video Relay Service (VRS) to hearing impaired individuals. Sorenson Relay calls are routed through an American Sign Language (ASL) video interpreting center.

Now Mono County residents who use ASL have the option to connect with hearing people over the videophone located at the Social Services office. Call us at 760-924-1770 or visit our office for more information about this new service.

