



Jobseeker News

A MONTHLY NEWSLETTER FOR MONO COUNTY JOBSEEKERS AND EMPLOYERS

CONTACT US

Mammoth Lakes
1290 Tavern Road
PO BOX 2969
Mammoth Lakes, CA
760-924-1770

Bridgeport
37 Emigrant St.
Bridgeport, CA
760-932-5600

Walker
107384 HWY 395
Walker, CA
530-495-1263

www.monocounty.ca.gov

Employment Service Workers

Angela Olson
aolson@mono.ca.gov

Cynthia Garibay
cgaribay@mono.ca.gov

Yvon Guzman-Rangel
yguzman-rangel@mono.ca.gov

A PROUD PARTNER OF
America's JobCenter
of California™

RECENT NEWS

Give Feedback, Get Coffee! Take the Mammoth Lakes Housing Survey



What housing programs you think should be prioritized in your town? Rental assistance? Redeveloping old and unused buildings? Tiny homes?

Mammoth Lakes Housing is seeking feedback through an online survey to help them improve their work in our area. You or someone you know has likely been impacted by the lack of affordable housing in our community. **Taking this survey is a quick and easy way to have your voice heard.**

Visit forms.gle/J95RcyxXrNHDQbov9 or scan the QR code below to access the survey. As a thank you for your time, you'll receive a \$1 off coffee

coupon at [Looney Bean](#) in Mammoth Lakes, located at 26 Old Mammoth Road (Rite Aid/DIY Home Center).

Mammoth Lakes Housing is a non-profit housing development organization working on community solutions in Inyo, Mono, and Alpine counties. Their mission is to support workforce housing for a viable local economy and a sustainable community.

For more information on Mammoth Lakes Housing, visit mammothlakeshousing.org, or contact Executive Director Patricia Robertson with any questions: 760-934-4740 or patricia@mammothlakeshousing.org.



Fill out this survey and get **\$1.00 OFF** coffee at Looney Bean in Mammoth

Complete esta encuesta y obtenga \$1.00 de descuento en café en Looney Bean en Mammoth



JOB OF THE MONTH

Eligibility Specialist ES Trainee, ES I, ES II

Location: Mammoth Lakes

Description: This job is one position, but open to three different levels of qualification: ES Trainee, ES I, and ES II. Please see below for an overview of each.

The Eligibility Specialist classifications determine the eligibility of applicants and recipients for public assistance programs through interactive interviewing and fact gathering; maintain current knowledge of program regulations and procedures necessary for multi-program caseload administration; initiate and process casework through automated systems; identify needs and make appropriate referrals for health, social and/or employment services; and perform related work as required.

Position Closes: Open until filled

More Information:

monocounty.ca.gov/social-services/page/job-openings



Photo: Christina Morillo



Photo: Mammoth Lakes Tourism/Christian Pondella

ES Trainee

Salary: \$19.44 - \$23.63 hourly

To Apply: www.governmentjobs.com/careers/MSS/jobs/3431649/eligibility-specialist-trainee

Description: The Eligibility Specialist Trainee is the classroom and on-the-job trainee level in the Eligibility Specialist series where emphasis is on learning the basic regulatory and statutory requirements of multiple public assistance programs. Incumbents may receive classroom instruction and/or on-the-job training prior to being assigned casework or tasks. Once incumbents are placed in a unit, they will continue to participate in on-the-job training and may be assigned a variety of duties, including some casework/tasks which will assist them in learning to determine initial and continuing eligibility for one or more public assistance programs.

ES I

Salary: \$21.46 - \$26.09 hourly

To Apply: www.governmentjobs.com/careers/MSS/jobs/3431521/eligibility-specialist-i

Description: The Eligibility Specialist I is the entry-level classification in the Eligibility Specialist series. Incumbents may have prior experience determining eligibility for loans, financial assistance, unemployment or veterans benefits, or publicly or privately funded health, counseling or social services programs; have completed initial classroom training provided as part of the Eligibility Specialist Trainee training program; or may have the required level of education. Incumbents will be placed in a work team and initially may receive classroom instruction prior to being assigned casework and/or tasks.

ES II

Salary: \$23.69 - \$28.79 hourly

To Apply: www.governmentjobs.com/careers/MSS/jobs/3431623/eligibility-specialist-ii

Description: The Eligibility Specialist II is the journey-level classification in the Eligibility Specialist series. Incumbents demonstrate working knowledge of eligibility regulations, procedures and eligibility software systems. Eligibility Specialist II incumbents handle more complex tasks and/or caseloads independently with consultation as needed by Eligibility Specialist IIIs or Eligibility Supervisors. Positions in this class are flexibly staffed and are normally filled by advancement from the lower level or if filled from the outside, require prior experience as an Eligibility Specialist, Eligibility Worker or comparable position.

JOB BOARD POSTINGS

Mono County Social Services: Social Service Aide Mammoth Lakes

Salary: \$21.46-\$26.09/hour

Info: Full time. Performs specifically designated tasks related to the improvement of family functioning and child and adult services.

To Apply: www.governmentjobs.com/careers/MSS/jobs/3439798/social-service-aide

Mono County Superior Court: Deputy Clerk Mammoth Lakes

Salary: \$2,872-\$4,575/month

Info: Monday-Friday FT, excellent benefits. More info: www.mono.courts.ca.gov/sites/default/files/mono/default/2021-06/Deputy_clerk_I_II_III_IIIIV_Crim_IV.pdf

To Apply: www.mono.courts.ca.gov/general-information/employment

Whitmore Animal Shelter: Attendant Mammoth Lakes

Salary: \$17.27-\$20.99/hour

Info: Full time. Provide shelter duties, maintain a healthy atmosphere for all animals. More info: monocounty.ca.gov/hr/page/animal-control-shelter-attendant

To Apply: Email: hr@mono.ca.gov

Breakfast Club: Waitstaff, Host and Bus Person Mammoth Lakes

To Apply: Apply in person at 2987 Main Street, Mammoth Lakes.

Mono County Public Health: COVID Screener – Bilingual Mammoth Lakes

Salary: \$20.43-\$24.83/hour

Info: Greet/screen clients at the Civic Center by checking for temperature, compliance with face coverings, and ensure they do not exhibit any Covid-related symptoms. Full time.

To Apply: monocounty.ca.gov/jobs

Mono County: Systems Administrator Countywide & Remote

Salary: \$84,330-\$103,111/year

Info: Administer server hardware, software, operating systems, databases, and security including the design, installation, configuration, optimization, maintenance, and support of host systems. monocounty.ca.gov/it

To Apply: monocounty.ca.gov/jobs

Blizzard PM: Maintenance Position, PT or FT Mammoth Lakes

Salary: \$17-\$24/hour

To Apply: Please send resumes to: jerrica@blizzardpm.com or call 760-934-4455 ext. 01.

Mammoth Hospital: Cook/Food Service Worker Mammoth Lakes

Info: Prepare and serve meals for the patient, staff members, and guests. Must exhibit excellent customer service skills when interacting with the public and all hospital departments.

To Apply: mammoth-hospital.breezy.hr

USPS Contractor: Carrier Trainee

Salary: \$25/hour

Info: 5/6 days per week, 6 hours/day. Must pass FBI clearance, drug screen and DMV.

To Apply: Mike 760-914-1463

Vacasa: Housekeepers Mammoth Lakes & June Lake

Salary: \$23/hour, year-round

Info: Hours vary based on needs. Sign-on and winter bonuses. 100% health/dental/vision insurance. 401k, paid vacation and sick days, employee discounts.

To Apply: www.vacasa.com/careers/positions

Double Eagle Resort & Spa June Lake

Spa & Fitness Manager
Reservations Desk Clerk
Creskide Spa and Fitness Desk
Restaurant Assistant Manager
Restaurant Server

All positions offer health benefits, fitness membership and PTO.

To Apply: jobs@doubleeagle.com

Holiday Haus: Housekeeping Mammoth Lakes

Salary: \$21/hour

To Apply: Call 760-934-2414 or send resume to holiday-hausmammoth@gmail.com. You can also stop by the office at 3905 Main Street, Mammoth Lakes.

More Jobs: www.monocounty.ca.gov/workforce-services/page/job-boards-links

WILD IRIS FAMILY COUNSELING & CRISIS CENTER

Local Services for those affected by Domestic Violence, Sexual Assault, and Child Abuse

Trigger warning: domestic violence.

Angela Gabriel had known her partner for over 20 years, and he had a good relationship with her and their four children. However, after the death of his mother in 2015, he started to change.

It began as verbal abuse towards Angela and others on social media. He then bought several guns. His aggression escalated to physical abuse, and after an argument, he shot Angela six times while she was in the bathtub. As she looked up at him, he screamed at her, "Look at what you made me do. You made me shoot you!"

She spent over three weeks in the hospital, and is now paralyzed from the chest down. But she survived, and is grateful she can still be there for her children. Her partner is serving 45 years in prison. She hopes other women can learn from her, before it's too late.

Domestic violence is a pattern of behavior where someone uses intimidation, threats of or actual violence in order to maintain power and control over their partner.

Angela is one of the over 10 million men and women in the United States who are subjected to domestic violence each year, and her children part of the 15.5 million kids who witness domestic violence annually.

Wild Iris, a community-based non-profit agency serving Inyo and Mono Counties, is committed to promoting,

providing and sustaining programs of education and prevention, crisis intervention, advocacy and support for those affected by domestic violence, child abuse, and sexual assault.

Wild Iris stresses that if you are a victim of an abusive or violent relationship, **you are not alone**. If you're trying to decide whether to stay or leave, you may be feeling confused, uncertain, frightened, and torn. Maybe you're still hoping that things will change or you're afraid of what your partner will do if he or she discovers you're trying to leave. Whatever your reasons, you probably feel trapped and helpless. But help is available. **You deserve to live free of fear and violence.**

Let someone who you trust know what you are going through until you find the help you need. Peer counselors are available on the 24-hour Crisis Hotline for support: 1-877-873-7384. You may call anonymously. If you are in immediate danger: call 911.

In addition to support for survivors of domestic violence, Wild Iris provides services for those experiencing sexual assault or child abuse. Their comprehensive services include:

- 24/7 Crisis Line: 1-877-873-7384
- Emergency Shelter, Food, Clothing
- Safety Planning
- Advocacy & Accompaniment
- Housing Establishment & Relocation
- Restraining Orders Guidance
- Community Programs
- Information & Referrals



Angela and two of her children. Photo: Angela Gabriel



Photo: Wild Iris

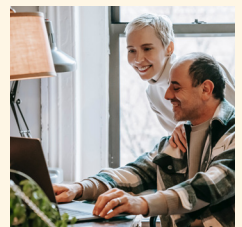
Wild Iris has offices in Bishop, Lone Pine, Mammoth Lakes, and Bridgeport.

To learn more, visit www.wild-iris.org.



SUBSCRIBE TO THE JOBSEEKER EMAIL NEWSLETTER!

Never miss an update! Sign up for our monthly Jobseeker News e-newsletter to receive up-to-date information straight to your phone or computer. Visit our Mailchimp signup form at eepurl.com/hGEkAz or scan the QR code to subscribe.





WORKFORCE SERVICES

Let's Talk!

Please contact Workforce Services to discover more about the programs we provide. **We are here to help you succeed!**

Call us at 760-924-1770 or visit:

www.monocounty.ca.gov/workforce-services



Photo: Brooke Cagle



Photo: Christin Hume



Photo: Jud Mackrill



Photo: Jakob Owens

CAREER SERVICES

Our Employment Service Workers are eager to assist and offer a variety of career related services.

- Résumé Building
- Interview Coaching
- Cover Letter Writing
- Career Counseling
- Job Search Assistance
- Community College Registration
- GED Training Referrals

RESOURCE ROOM

Do you need the use of a computer, internet, printer, copier, telephone or fax machine? We can help!

The Resource Room assistance is available to the public from 3pm to 5pm, Monday through Friday.

To receive assistance call 760-924-1770 and request employment services.

CALJOBS

Have you registered for CalJOBS?

CalJOBS is California's online resource to help job seekers and employers navigate the state's workforce services. You can search for jobs, create résumés, find qualified candidates, and more. Visit CalJOBS to register or log in.

www.caljobs.ca.gov

VETERANS SERVICES OFFICER

Gordon Greene

Office: 760-873-7850

Cell: 760-937-0431

ggreene@inyocounty.us

Please note that services offered through the Office of Veterans Affairs are for Veterans AND their families.

New Video Calling Services for the Hearing Impaired

Mono County Social Services has partnered with Sorenson to provide Video Relay Service (VRS) to hearing impaired individuals. Sorenson Relay calls are routed through an American Sign Language (ASL) video interpreting center.

Now Mono County residents who use ASL have the option to connect with hearing people over the videophone located at the Social Services office. Call us at 760-924-1770 or visit our office for more information about this new service.





Photo: Yan Krukov

UNEMPLOYMENT INSURANCE

Need Unemployment Insurance Assistance?

Public Statewide Online and Phone Unemployment Insurance (UI) Assistance:

edd.ca.gov/Unemployment/UI_Online.htm

- 1-800-300-5616 – UI Claims Support
- 1-833-978-2511 – General or Technical UI Support
- 1-866-333-4606 – Automated Self-Service UI Line

Public Local Kern, Inyo, and Mono (KIM) assistance with general UI guidance (from the Bakersfield AJCC/EDD Workforce Services (WS) staff in Bakersfield):

- 661-336-6912 – Bakersfield AJCC/EDD line
- WSBAJCCreferralKERN@edd.ca.gov – Bakersfield AJCC/EDD email



Photo: Los Muertos Crew

WORK INNOVATION AND OPPORTUNITY ACT

Updated Reimbursement of 90% of Wages to Employers

Are you an employer looking for help? The specific technical skills you need may be hard to find. The Workforce Innovation and Opportunity Act (WIOA) On-the-Job Training Program helps you train the right workers to meet your requirements.

This program assists employers with the costs of hiring and training new and advancing employees by offering financial reimbursement of up to 50% of the employee's wages during the training period – **now updated to 90% of the employee's wages for companies with 50 or less employees.**

This program is administered through Mono County Workforce Services. Contact: 760-924-1770 or workforceservices@mono.ca.gov before the employee is hired, or for any questions about the program.



COVID-19 VACCINATIONS

Get vaccinated – it's safe, effective, and free. Vaccination is the most important tool to end the COVID-19 pandemic.

Every Californian age 5 and up is now eligible for vaccination.

For more information:

English: coronavirus.monocounty.ca.gov

Español: coronavirus.espanol.monocounty.ca.gov

Talk to your provider or visit myturn.ca.gov to make an appointment.



COVID-19 BOOSTER SHOTS

Boosters are now available for fully vaccinated people age 18 and older!

If it has been six months or more since your second dose of Pfizer or Moderna, or two months or more since your first dose of Johnson & Johnson, make plans to get your boosters.



FREE AT-HOME COVID TESTS

Every home in the U.S. is eligible to order 4 free at-home COVID-19 tests.

The tests are completely free. Orders will usually ship in 7-12 days. Order your tests now so you have them when you need them.

For more information and to order:

English: www.covidtests.gov

Español: www.covidtests.gov/es

Temporary Changes to the Student Eligibility Rule



Effective Immediately

Students are encouraged to apply for CalFresh IF they are **eligible** for state or federally financed work study, as determined by the campus financial aid office, **OR** if they have an Expected Family Contribution (EFC) of \$0, as determined by the California Student Aid Commission (CSAC).

What verifications are recommended?

For Work Study:

- A letter from the financial aid office confirming work study eligibility, **OR**
- A completed work study verification form confirming work study eligibility

For \$0 EFC:

- A California Student Aid Commission (CSAC) verification letter, for the current school year
- A copy of the Student Aid Report (SAR), **OR**
- A copy of the Financial Aid Offer letter.

Find out if you're eligible, apply today:

 Click [GetCalFresh.org/Students](https://getcalfresh.org/students)

 Call **1-877-847-3663** (FOOD)

 Find an office at [CalFreshFood.org](https://calfreshfood.org)



For other languages, or reasonable accommodations, find an office at [CalFreshFood.org](https://calfreshfood.org). For speech and/or hearing assistance call **1-877-847-3663** (FOOD) or **711 Relay** or **760-924-1770**

¹ [GetCalFresh.org/Students](https://getcalfresh.org/students)

