

MONO COUNTY PLANNING COMMISSION

PO Box 347
Mammoth Lakes, CA 93546
760.924.1800, fax 924.1801
commdev@mono.ca.gov

PO Box 8
Bridgeport, CA 93517
760.932.5420, fax 932.5431
www.monocounty.ca.gov

SPECIAL MEETING AGENDA

June 13, 2025, 2:30 p.m.

June Lake Community Center
Parking Lot
90 W. Granite Ave., June Lake, CA

This meeting is a driving field trip and will be held in person, starting at the location listed above then traveling throughout the June Lake community. Members of the public may participate in person in their own vehicles.

**Agenda sequence (see note following agenda).*

1. **CALL TO ORDER & PLEDGE OF ALLEGIANCE**
2. **PUBLIC COMMENT:** Opportunity to address the Planning Commission on items not on the agenda
3. **FIELD TRIP TO REVIEW JUNE LAKE NEIGHBORHOODS ESTABLISHED IN THE SHORT-TERM RENTAL POLICIES.**
Approximate field trip route:
 - June Lake Community Center
 - June Lake Village, including Edgewater Condos, The Haven, Sierra Suns
 - Leonard Ave, optional: Carson View Drive and Skyline Drive
 - Interlaken condos
 - Petersen Tract
 - Williams Tract, including Birch Creek Condos
 - Travel to Down Canyon, including Aspen Meadows condos and Hideaway condos
 - Nevada Street
 - Clark Tract
 - Lakeview Drive
 - Return to June Lake Community Center and conclude with public comment and Commission discussion.
4. **ADJOURN** to scheduled Special Meeting on June 25, 2025, at 1:30 p.m.

NOTE: Although the Planning Commission generally strives to follow the agenda sequence, it reserves the right to take any agenda item – other than a noticed public hearing – and the field trip route in any order, and at any time after its meeting starts. The Planning Commission encourages public attendance and participation.

DISTRICT #1
COMMISSIONER
Patricia Robertson

DISTRICT #2
COMMISSIONER
Roberta Lagomarsini

DISTRICT #3
COMMISSIONER
Jora Fogg

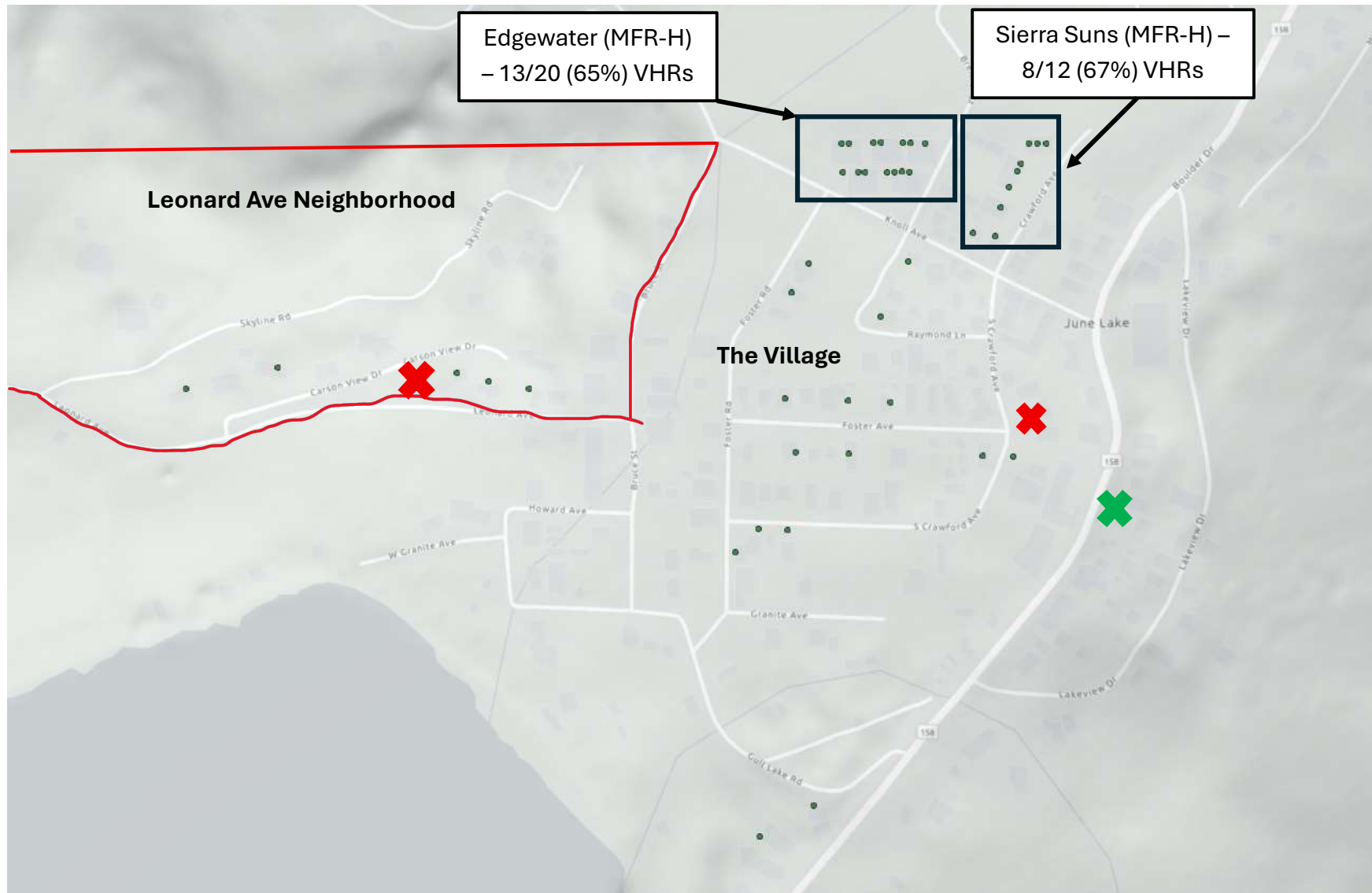
DISTRICT #4
COMMISSIONER
Scott Bush

DISTRICT #5
COMMISSIONER
Chris I. Lizza

In compliance with the Americans with Disabilities Act, anyone who needs special assistance to attend this meeting can contact the Commission secretary at 760-924-1804 within 48 hours prior to the meeting to ensure accessibility (see 42 USCS 12132, 28CFR 35.130).

Full agenda packets, plus associated materials distributed less than 24 hours prior to the meeting, will be available for public review at the Community Development offices in Bridgeport (Annex 1, 74 N. School St.) or Mammoth Lakes (1290 Tavern Rd, Mammoth Lakes, CA 93546). Agenda packets are also posted online at [www.monocounty.ca.gov / departments / community development / commissions & committees / planning commission](http://www.monocounty.ca.gov/departments/community%20development/commissions%20&%20committees/planning%20commission). For inclusion on the e-mail distribution list, send request to hwillson@mono.ca.gov.

June Lake Village/Leonard Avenue Neighborhoods



The Highlands Neighborhood



Williams Tract Neighborhood



Clark Tract Neighborhood

