

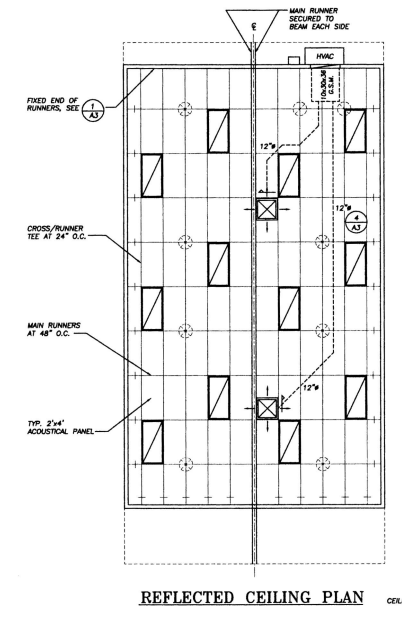
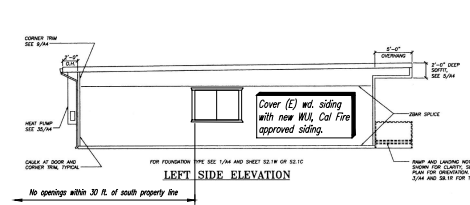
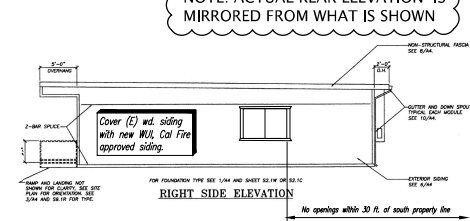
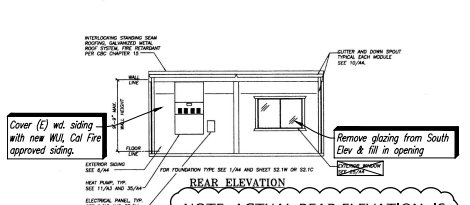
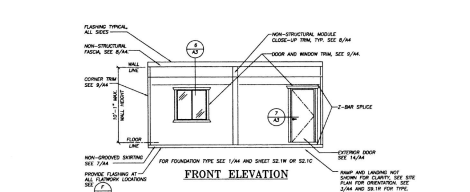
SCHEDULE PANEL P1		MAIN BKR: 100A			
TYPE: SOD HOM NEMA-3R (SEE SPEC SHEET)		VOLTS: 120/240			
MOUNTING: SURFACE		PHASE: 1 WIRE: 3			
POLE NO.	SERVING	KVA LOAD	CKT BKR	RECEPS	POLE NO.
1	HVAC	6.7	70	20 1.2	2
3		6.7	70	20 1.6	4
5					6
7					8
9					10
11					12
13					14
15					16
17					18

CONNECTED LOAD: KVA 18.2 + 230V = 70 AMPS

* MAY BE HIGHER IF WATER HEATER IS USED.

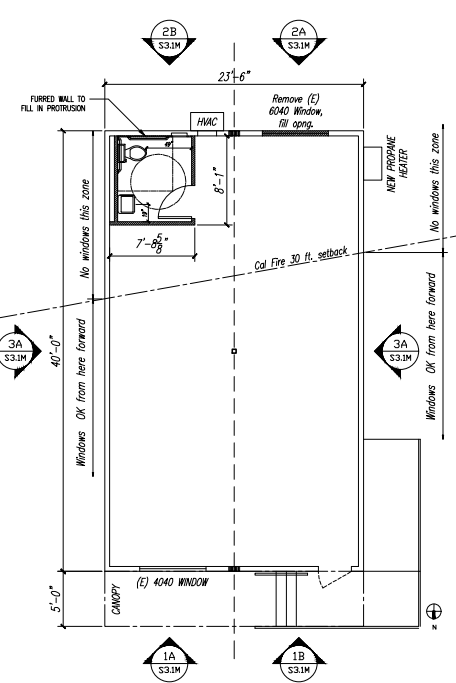
PANEL LISTED FOR USE AS SERVICE EQUIPMENT
 * HACR RATED C.B. WITH LOCK-OFF CLIP

- ELECTRICAL NOTES**
- GROUNDING OF ELECTRICAL SYSTEM PER DETAIL B/A1. SEE GROUNDING OF BLDG COMPONENT NOTES, SHEET A1.
 - IF MAIN FUSES ARE NOT PROVIDED IN THE HEAT PUMP UNIT BY THE EQUIPMENT MANUFACTURER, THE HVAC UNIT CIRCUIT BREAKER(S) MUST BE HACR RATED.
 - A LOCK OFF CLIP IS TO BE PROVIDED FOR THE HEAT PUMP FEEDER CIRCUIT BREAKER.
 - ALL WIRING TO BE IN MINIMUM 1/2" CONDUIT.
 - ALL BACKWAYS SHALL CONTAIN EQUIPMENT GROUNDING CONDUCTOR PER NEC 250-95.
 - CONDUCTORS TO BE LISTED FOR USE AT 75° C MINIMUM. DERATING MAY BE REQUIRED OF 80° C RATED WIRE (TW).
 - MAIN CIRCUIT BREAKER PER NEC 230-70.



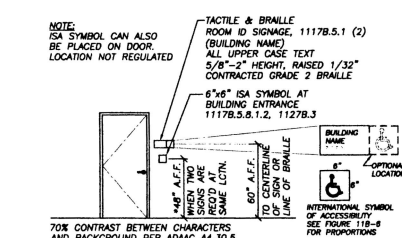
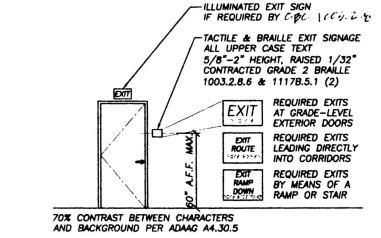
SUSPENDED CEILING SYSTEM:
 STEEL EXPOSED CEILING GRID SYSTEM - SEE SPECS. SHEET A4 SHALL COMPLY WITH CBC CHAPTER 25A AND IR M-3. (HEAVY DUTY MAIN RUNNERS)
 ACOUSTIC LAY-IN PANELS - SEE SPEC SHT A4
 FLAME SPREAD: 0-25 MAX.
 SMOKE DEVELOPED: 450 MAX.

NOTE: ACTUAL RCP IS MIRRORED ALONG CENTERLINE FROM WHAT IS SHOWN



NOTE: Install placard within each room stating: "Maximum Live Load = 75 psf". Use contrasting text color over background color with minimum 1.5" tall letters.

NOTE: Please verify building dimensions prior to construction



LEGEND:

- S SWITCH AT 48" AFF
- WALL RECEPTS, MIN. 15"-18" AFF, UOIN
- 4-PLEX RECEPTS
- 220 OUTLET
- OR DEDICATED CIRCUIT
- FIRE ALARM PULL STATION J-BOX AT MAX. 48" AFF (PER SPECS.)
- FIRE EXTINGUISHER BRACKET AT MAX. 48" AFF (PER SPECS. 34/A4)
- FIRE ALARM HORN J-BOX AT 7'-6" AT EXTR. & 6'-8" AT INTR.
- LIGHT FIXTURE (SEE SPECS. 39/A4)
- EMPTY CONDUIT TO FIRE ALARM SYSTEM JUNCTION BOX W/ W.P. COVER
- SMOKE DETECTOR BELOW CLG. AND HEAT DETECTOR ABV. CLG. (PROVIDED BY OTHERS, SEE FIRE ALARM SUBMITTAL)
- [] REQUIRED
 [] NOT USED THIS PROJECT
- 2'x4" RECESSED LIGHT FIXTURE, SEE DET. 3/A3 AND SPECS. 40/A4
- 24"x24" SUPPLY AIR GRILL WITH DAMPER SEE DET. 5/A3
- LATERAL RESTRAINT WIRES (12 GA.) SEE DET. 2/A3. NOTE: (3) 12 GA. LAT. RESTRAINT WIRES EA. SIDE AT DUCT LGTN. ONLY
- ELECTRICAL PANEL PER SCHEDULE
- THERMOSTAT +60" (SEALED)
- WALL CLOCK W/ RECEPT AT 84"
- DATA DATA/PHONE
- PHONE
- FIRE ALARM STROBE (ELEV. RANGE: +80" MIN. AFF & +95" MAX. AFF TO BOTTOM OF LENS)
- EXHAUST FAN
- SIGNAGE BY OTHERS, SEE DETAILS A-B ON THIS SHEET

Proposed New WU approved siding:
 Listing No. 8140-2026-0003
 Lister: James Harbrite Bldg. Products, Inc.
 Product: "Campanel" vertical siding, fiber-cement, 5/16" thk., installed per Mfr. Installation guides

AEI
 Agee Engineering, Inc.
 1724 Alcatraz St.
 (916) 607-0830
 sage@agee-engr.com

INDUSTRIAL BUILDING DESIGN
 Davis, CA
 1724 Alcatraz St.
 (916) 607-0830
 sage@agee-engr.com

Scott R. Agee
 REGISTERED PROFESSIONAL ENGINEER
 No. C-31396
 Exp. 12-31-2024
 STATE OF CALIFORNIA
 Date Signed: _____

Portable Classroom Project for The Church on the Mountain
 384 South Landing Rd., Crowley Lake, CA. 93546

REVISIONS	
5	7-2-24
1	2-18-24
FLOOR #	
REFLECTED CEILING PLANS, EXTERIOR ELEVATIONS	
DATE	BY
5-31-24	JTM
DATE	BY
24-05	A2.0