



Active Transportation Program (Cycle 8) Update

*Multi-Modal Placemaking for Lee Vining Main
Street*

June 10, 2026



Funding Request

Goal: to complete and complement Caltrans' **complete streets design** of US Highway 395 (US 395) in Lee Vining

Proposed improvements:

- **Safety countermeasures**, including Rectangular Rapid Flashing Beacons, flashing beacons, and pedestrian-scale lighting
- **Multi-use path** through Guss Hess Park
- **Multi-modal placemaking features**, including transit shelters, and other amenities (e.g., benches)



Project Elements

Parent Project (Caltrans District 9)

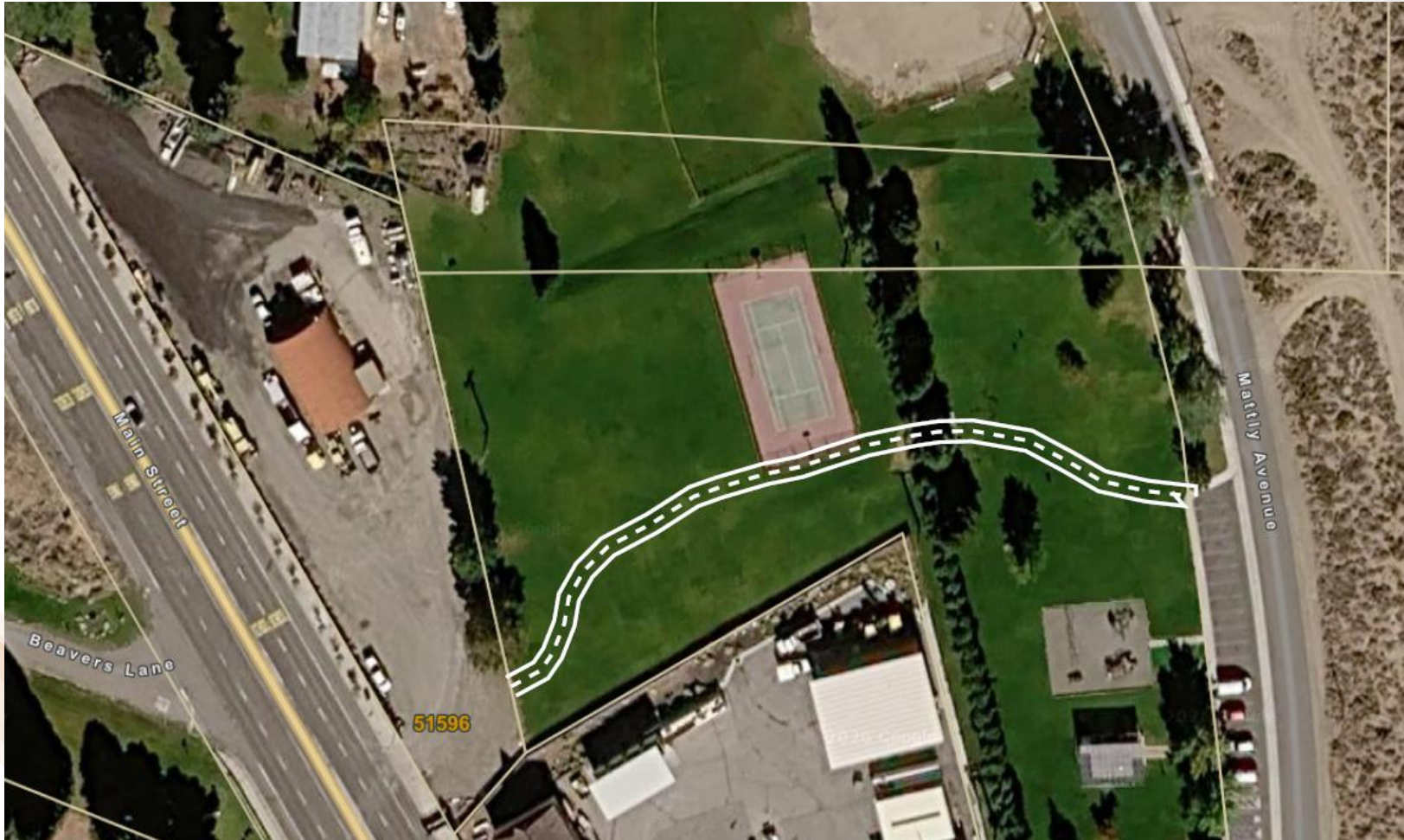
- Complete rehabilitation of existing pavement area
- Highway reconfiguration from 5-lanes to 3-lanes
- Addition of bicycle lanes
- Replace, repair, or construct new American with Disabilities Act (ADA) facilities
- Sidewalk expansions up to 16' wide

ATP Project (Mono County)

- Rectangular Rapid Flashing Beacons (RRFBs)
- Flashing beacons
- Pedestrian-scale lighting
- Multi-use path through Guss Hess Park
- Multi-modal placemaking features, including transit shelters and benches

Improvements (Cont.)

Multi-Use Path in Guss Hess Park



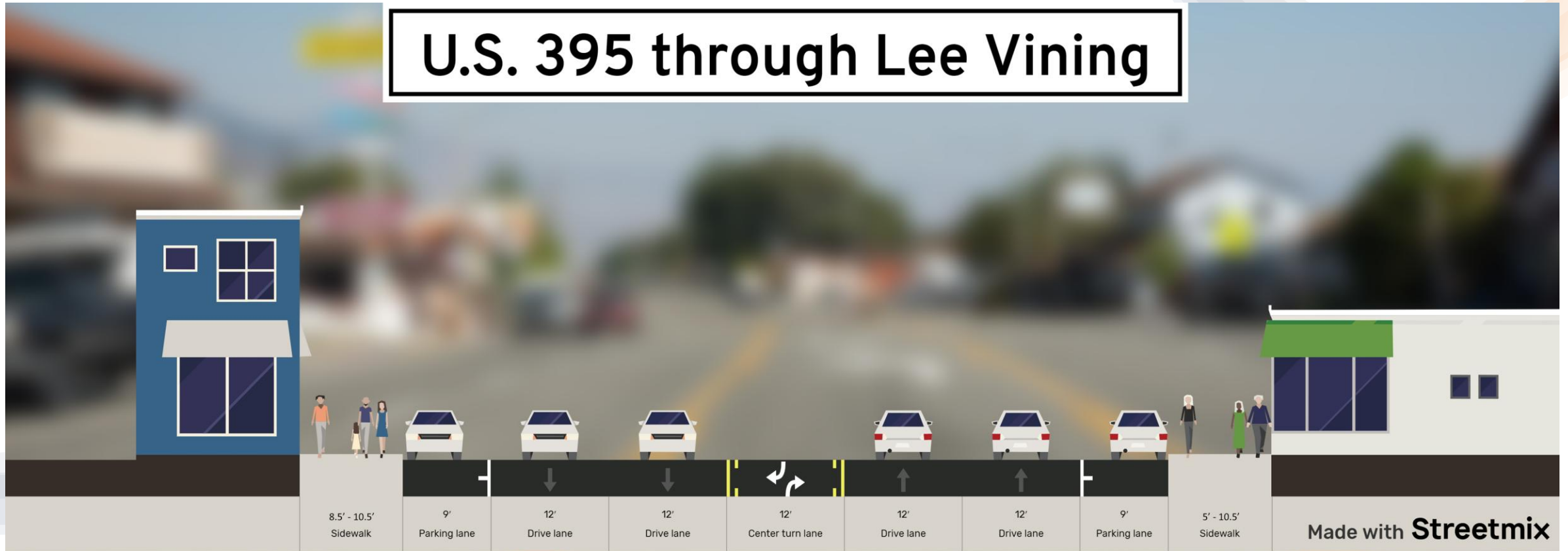
Improvements (Cont.)

Transit Shelter

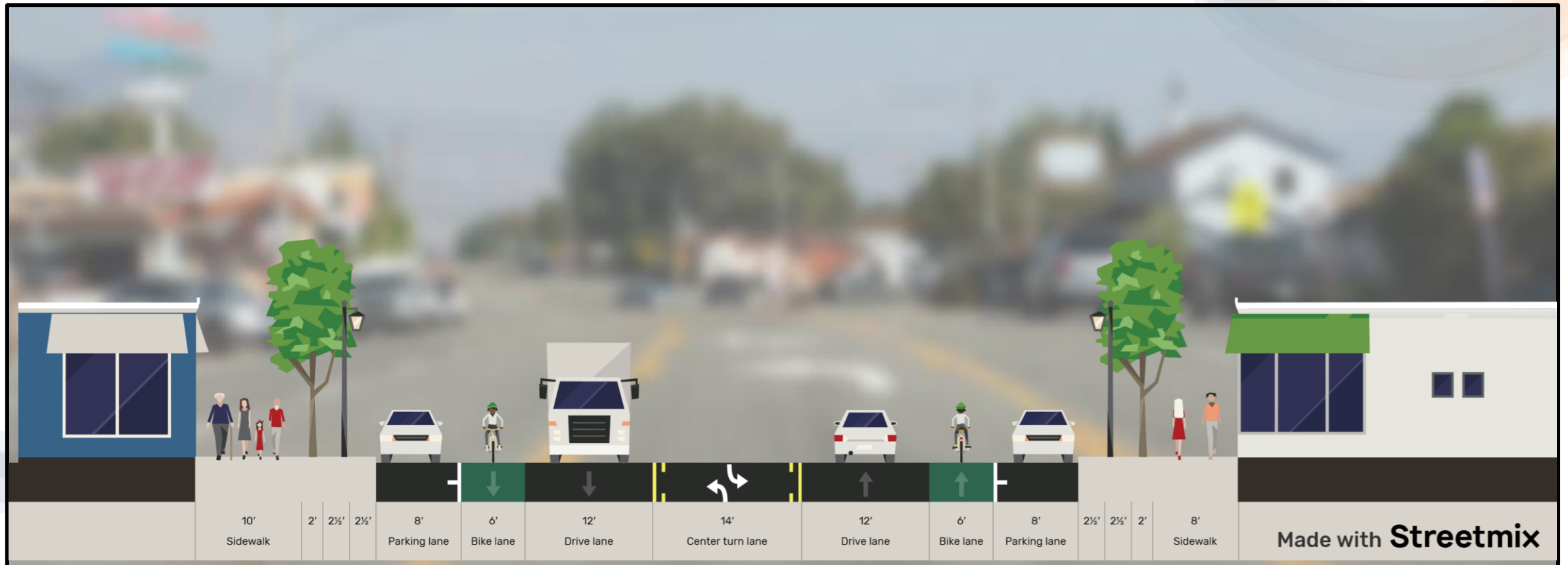


Current Layout

U.S. 395 through Lee Vining



Proposed Layout





Questions?

