




SB 552 DROUGHT RESILIENCE PLAN

LDTAC Meeting #3
September 3, 2025
1:30 pm


1



AGENDA

- Drought Resilience Plan Development Process Update
- Risk and Vulnerability Summary
- Activation Triggers For Response Actions
- Short-Term Response Actions
- Long-Term Mitigation Strategies
- Group Discussion: Mitigation Action Worksheet
- Schedule & Next Steps
- Questions

2




Join at slido.com
#MonoDRP

*Do not edit
How to change the design*

i The [Slido app](#) must be installed on every computer you're presenting from **slido**

3



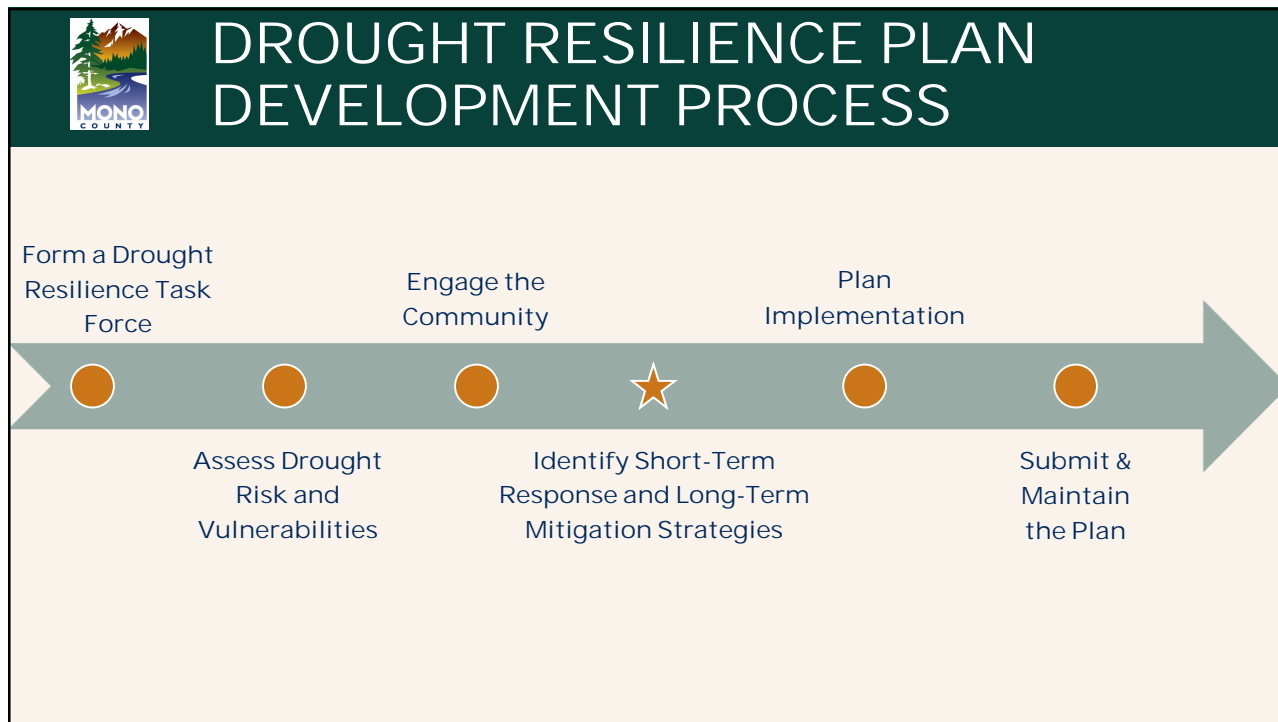
SENATE BILL 552

Purpose:
Ensure small water systems and domestic wells are better prepared for drought and water shortages.

County Requirements:

- Establish a Drought & Water Shortage Task Force: Ongoing group to plan for and respond to risks faced by small water systems (5-14 connections) and domestic wells.
- Develop a County Drought Resilience Plan (DRP): A living plan identifying risks, mitigation strategies, and implementation steps for vulnerable water users.

4



5

STAKEHOLDER ENGAGEMENT

Key Stakeholder Groups

- Small water systems and domestic well users
- Disadvantaged and vulnerable communities
- County agencies
- Tribal governments
- Agricultural, business, and environmental groups

Engagement Activities

- Public Workshop
- Outreach through local community-based organizations
- LDTAC Meetings (in lieu of Drought Resilience Task Force)
- Webpage
- Coordination with MJHMP Team
- Board of Supervisors Meeting

Mono County
LAND DEVELOPMENT TECHNICAL ADVISORY COMMITTEE
DROUGHT RESILIENCE TASK FORCE

Join us for the third session in a special series of Drought Resilience Task Force meetings, hosted by the Land Development Technical Advisory Committee in support of Senate Bill (SB) 552 implementation. The meeting will focus on strengthening the County's ability to prepare for and respond to drought, water shortages, and water system failures through the development of a Drought Resilience Plan.

Topics will include:

- Progress on the development of the Drought Resilience Plan.
- Activation triggers for response actions, and
- Potential short-term response actions and long-term mitigation strategies.

We welcome all interested stakeholders, including local agencies, water providers, and community representatives to participate in shaping an effective and equitable drought resilience plan.

September 3, 2025
1:30 pm

Mammoth Office
Dana Room
290 Tavern Road
Mammoth Lakes

Bridgeport Office - CAO
Conference Room Annex 1
24 N. Schoes Street
Bridgeport

You can also join virtually via Zoom by [clicking here](#).

Meeting ID: 836 3605 2287
Passcode: 9876

IF YOU HAVE QUESTIONS OR WOULD LIKE ADDITIONAL INFORMATION, PLEASE CONTACT:
Erin Bauer
Planning Analyst | Mono County
ebauer@mono.co.gov

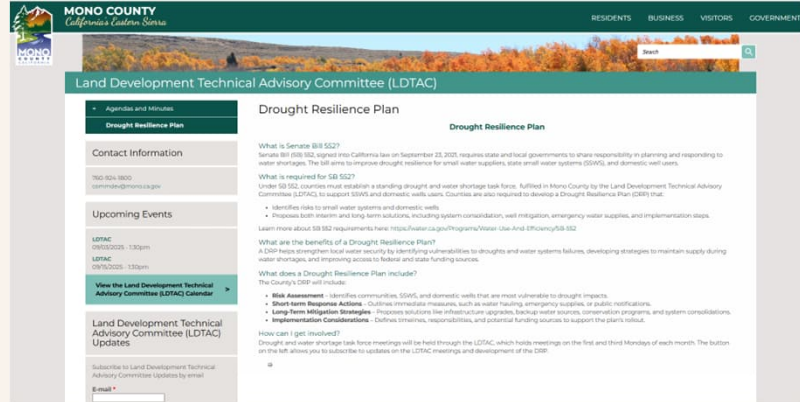
6



WEBPAGE

Drought Resilience Plan

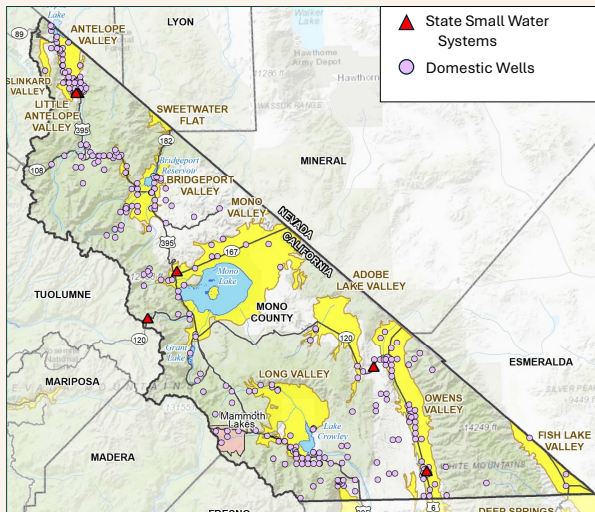
- Background Information on SB 552 and the benefits of a Drought Resilience Plan
- Drought Resilience Plan Organization
- How to get Involved
- Email Sign-Ups for LDTAC Meetings & Updates



7



DWR WATER SHORTAGE VULNERABILITY TOOL



State Smalls

6

Number of state small water systems in the filtered area
Source: State Water Resources Control Board

Domestic Wells

861

Number of domestic wells in the filtered area
Source: Online Well Completion Reports (Groundwater Live)

8



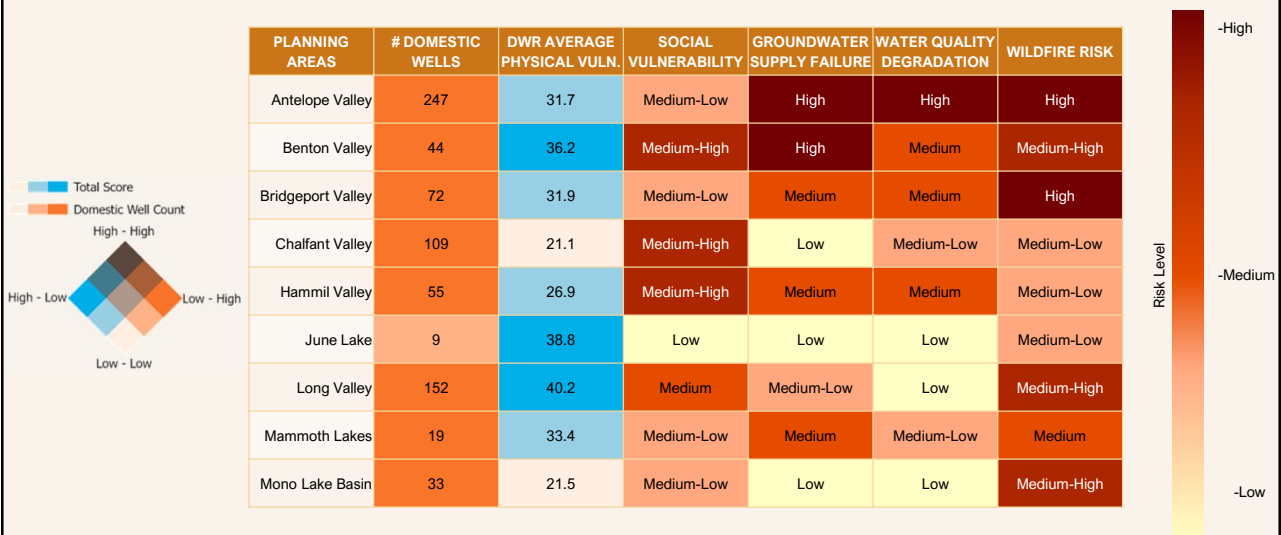
PHYSICAL VULNERABILITY INDICATORS

CATEGORY	PHYSICAL VULNERABILITY INDICATOR	APPLICABLE TO COUNTY
Climate Change	Temperature shift by mid-century	✓
	Wildfire risk (severe/high)	✓
	Sea level rise (coastal aquifers)	✗
Current Conditions and Events	Below-average recent precipitation	✓
	Multiple dry years (past 5 years)	✓
	Fractured rock area	✓
	Current wildfire risk	✓
	Groundwater quality risk	✓
	Subsidence	✗
	Over-drafted basin	✗
	Declining groundwater levels	✓
	Irrigated agriculture	✓
Record of Shortages	Household outages on domestic wells	✓
Physical Susceptibility	Dry well susceptibility (alluvial basin)	✗
	High density of domestic wells (fractured rock area)	✗
	Shallow domestic and small system wells	✓

9



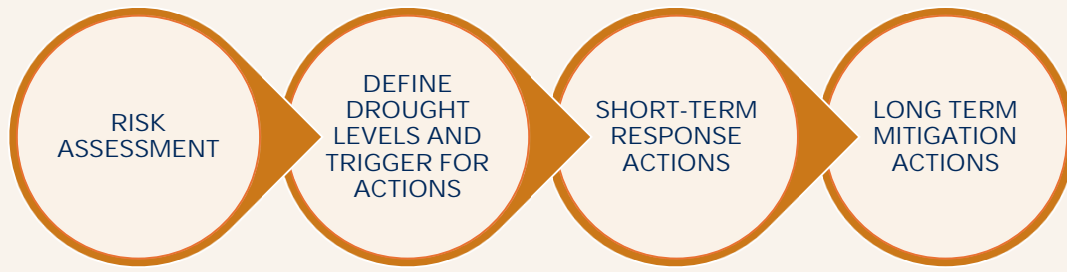
REGIONAL RISK ASSESSMENT



10



DRP REQUIREMENTS



11



DROUGHT LEVELS

Stage 0: Normal Conditions

- No drought indicators present; normal water year variability.

Stage 1: Dry Conditions

- Early indicators of dry conditions or below-average water supply.


Stage 2: Moderate Drought

- Conditions are likely to impact water deliveries, aquatic ecosystems, or community supplies.

Stage 3: Severe or Extreme Drought

- Critical water shortages or ecosystem stress; emergency response may be required.


12



DROUGHT LEVEL TRIGGERS

STAGE	SUGGESTED TRIGGER CRITERIA					
	SWE (April 1 median)	Streamflow, % of average seasonal flow	Reservoir/lake levels	Annual precipitation, % of average	USDM Designation	Conservation Efforts
Stage 0 Normal Conditions	≥ 90%	≥ 90%	Within normal seasonal range	85-115%	None	None
Stage 1 Dry Conditions	70-90%	70-90%	Below 70% of seasonal average	<70%	D0 or D1 in ≥ 25% of county	Voluntary conservation initiated by water suppliers
Stage 2 Moderate Drought	50-70%	<70%	Below 50% of seasonal average	2+ consecutive years of <70%	D2 or D3 in ≥ 25% of County	Mandatory conservation measures by multiple water suppliers
Stage 3 Severe or Extreme Drought	<30%	<50%	Critically low threshold	3+ consecutive years of <50%	D3 or D4 in majority of County for ≥ three weeks	Water supply interruptions, delivery failures, or imminent risks to health and safety

13



COUNTY ROLES & LIMITATIONS


Responsibilities:

- Facilitate structured drought preparedness
- Support domestic wells and State Small Water Systems


Limitations:

- Not a water supplier
- No annual budget for supply reliability/resiliency projects
- Dependent on collaboration with local entities to improve drought and water supply resilience


Capacity Areas




Monitoring & Tracking




Emergency Response




Community Outreach



Partnerships and Coordination



Funding & Resources



Plans & Ordinances

14



SB 552 LEGISLATIVE DIRECTIVE

The County shall develop a plan that includes:

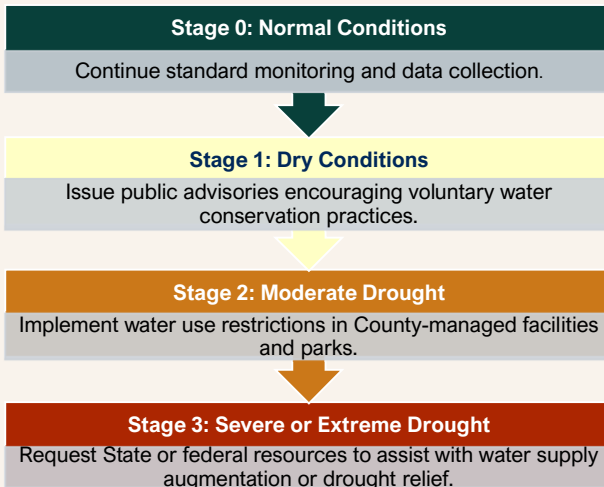
	Consolidations of existing water systems and domestic wells.
	Domestic well drinking water mitigation programs.
	Emergency and interim drinking water solutions.
	Analysis of the steps necessary to implement the plan.
	An analysis funding sources available to implement the plan.

15



EXAMPLES OF SHORT-TERM ACTIONS

Short-term Response Actions



Short-term Response Actions:


- Addresses immediate, often basic needs during drought and water shortage events.
- Refer to **Short-Term Response Actions Handout**

16

Do not edit
How to change the design



Please provide examples of short-term response actions that you think would be efficient in the county.

 The [Slido app](#) must be installed on every computer you're presenting from

slido

17



EXAMPLES OF LONG-TERM MITIGATION ACTIONS

Long-term Mitigation Actions

MITIGATION CATEGORY	MITIGATION ACTION
Planning	<ul style="list-style-type: none"> Groundwater Well Monitoring & Drought Condition Tracking (e.g. USDM) Dry Well Reporting System GSA Coordination
Alternative Supply & Water Reuse	<ul style="list-style-type: none"> Dedicated Water Filing Stations/Packaged & Bottled Water Supplies Dry Well Abandonment & Replacement Program Water Systems Consolidation
Water Efficiency & Demand Management	<ul style="list-style-type: none"> Voluntary Water Conservation Program Domestic Well Monitoring Assistance Retrofit Homes & Businesses for Increased Water Conservation*
Outreach & Education	<ul style="list-style-type: none"> Regional Groundwater Level Monitoring Communication Channel Local Agricultural Resources about Crops that require Little/No Irrigation* Support TVGMD Efforts to Improve Groundwater Management*

Long-term Mitigation Actions:

- Provides long-term solutions, if not preventive measures, to areas susceptible to drought and water shortage conditions.
 - Refer to **Long-Term Mitigation Actions Handout**

*Refers to mitigation actions from the County's 2019 MJHMP.

18

Do not edit
How to change the design

Please provide examples of long-term mitigation actions you think would be efficient in the county.

The [Slido app](#) must be installed on every computer you're presenting from

19

MITIGATION ACTION WORKSHEET

Purpose

This worksheet is a template to document key short- and long-term actions the County can take to support the Drought Resilience Plan and advance implementation.

Approach

The project team should use this worksheet to list possible actions, drawing from short-term responses in the **Short-Term Response Actions Handout** and long-term strategies in the **Long-Term Mitigation Actions Handout** for each drought impact or stressor. Examples are shown in italics.

DROUGHT IMPACT	SHORT-TERM RESPONSE ACTIONS	LONG-TERM MITIGATION ACTIONS
<i>Example:</i> Disruption of water supplies	<i>Example:</i> Implement watering restrictions	<i>Example:</i> Enhance supply and delivery infrastructure to minimize disruptions
<i>Example:</i> Degraded water quality	<i>Example:</i> Utilize other water sources; increase water treatment	<i>Example:</i> Utilize other water sources; enhance treatment facilities
Prevalence of shallow wells		
Declining groundwater levels		
Aging and limited water conveyance infrastructure		
Naturally occurring contaminants		
Irrigated agriculture overlap		
High wildfire hazard zones		
Increased data/information needs to monitor and implement drought mitigation plan		
Lower quality of water supply after fires due to silt and ash flows from rain events		

20



GROUP DISCUSSION

Outcome

After completing the worksheet the DRTF should have information on what short-term response actions and long-term mitigation actions to include in the DRP.

Instructions

1. Review the ***Vulnerability Assessment Summary Handout***.
2. Review the ***Short-Term Response Actions Handout***.
3. Review the ***Long-Term Mitigation Actions Handout***.
4. Fill out Mitigation Action Worksheet.
5. Provide Workbook to Erin Bauer by **Friday September 19th**.



21



ORGANIZATION OF THE PLAN

1. Introduction
2. County Drought and Water Shortage Advisory Group
3. Drought and Water Shortage Risk Assessment
4. Short-Term Response Actions
5. Long-Term Mitigation Strategy and Actions
6. Implementation Considerations



22



SCHEDULE

Task	May-25	Jun-25	Jul-25	Aug-25	Sep-25	Oct-25	Nov-25
Task 1: Kickoff Meeting							
Project Kickoff Meeting	█						
Circulate Data Needs List	█						
Task 2: Drought and Water Shortage Risk Assessment							
Draft Drought and Water Shortage Risk Assessment	█	█	█	█			
1st Drought Relief Task Force Meeting			█				
Task 3: Short-Term Response Actions							
Portfolio of Short-Term Response Actions			█	█			
2nd Drought Relief Task Force Meeting			█				
Task 4: Long-Term Mitigation Strategy and Actions							
Portfolio of Long-Term Mitigation Actions			█	█	█		
3rd Drought Relief Task Force Meeting					█		
Task 5: Implementation Considerations							
Implementation Roadmap			█	█			
Task 6: Drought Resilience Plan							
Draft DRP			█	█	█	█	█
20-Day Public Review Period for Public Review Draft						█	█
County Staff Prepares Staff Report for Final DRP							█
County Board of Supervisors Approval							█

23



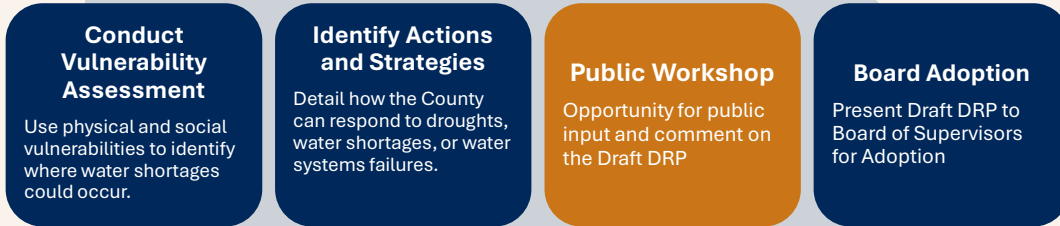
NEXT STEPS

MEETING	DATE	TOPICS COVERED
LDTAC Meeting #1	June 16, 2025	<ul style="list-style-type: none"> □ Introduction to SB 552 requirements □ Purpose and Need for the DRP □ LDTAC and Stakeholder Roles and Responsibilities □ Organization of the DRP □ Schedule and Next Steps
LDTAC Meeting #2	July 21, 2025	<ul style="list-style-type: none"> □ Drought and Water Shortage Vulnerability Assessment Results
LDTAC Meeting #3	September 3, 2025	<ul style="list-style-type: none"> □ Review of Planning Process □ Summarize Outreach & Engagement Efforts □ Short-Term Response Actions □ Long-Term Mitigation Actions □ Implementation Process
Public Workshop #1	October - TBD	<ul style="list-style-type: none"> □ Overview of SB 552 Requirements □ Purpose and Need of the DRP □ Planning Process Highlights □ Summary of Stakeholder & Public Input □ Recommendation for Adoption of DRP

24



NEXT STEPS



Conduct Vulnerability Assessment

Use physical and social vulnerabilities to identify where water shortages could occur.

Identify Actions and Strategies

Detail how the County can respond to droughts, water shortages, or water systems failures.

Public Workshop

Opportunity for public input and comment on the Draft DRP

Board Adoption

Present Draft DRP to Board of Supervisors for Adoption

- ★ Provide Comments on the *Draft Vulnerability Assessment* by September 12th.
- ★ Turn in your *Mitigation Action Worksheet* by September 19th.

25



QUESTIONS?



Erin Bauer
 Planning Analyst | Mono County
EBauer@mono.ca.gov

Juliana Prospero, AICP
 Project Manager | WSP
Juliana.Proserpi@wsp.com

26