

SCHEDULE PANEL P1 MAIN BKR: 100A

TYPE: SQD HOM NEMA- 3R VOLTS: 120/240
(SEE SPEC SHEET)

MOUNTING: SURFACE PHASE: 1 WIRE: 3

POLE NO.	SERVING	KVA LOAD	CKT BKR	CKT BKR	KVA LOAD	SERVING	POLE NO.
1	HVAC	6.7	70		20	RECEPS	2
3		6.7			20	LIGHTS	4
5							6
7							8
9							10
11							12
13							14
15							16
17							18

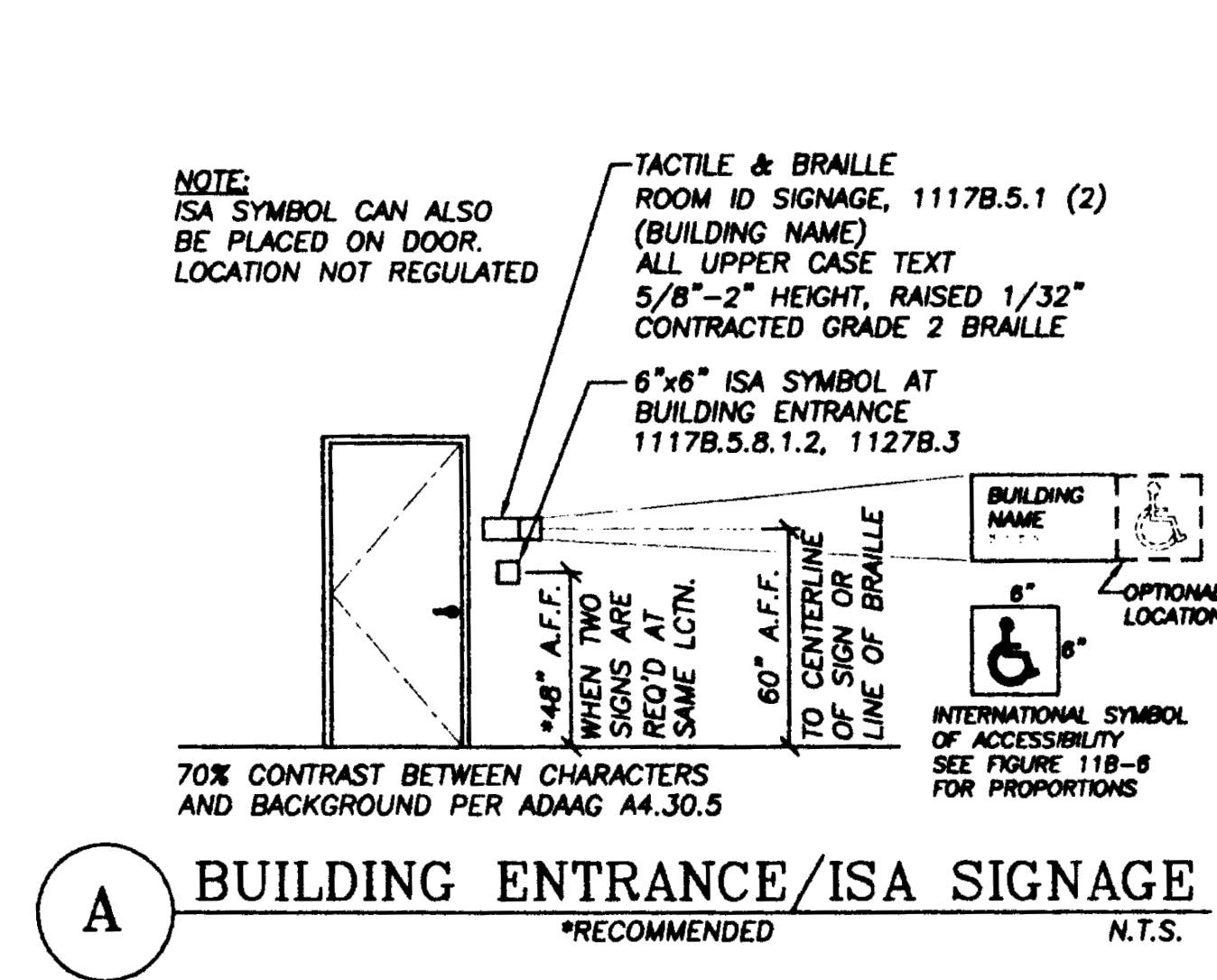
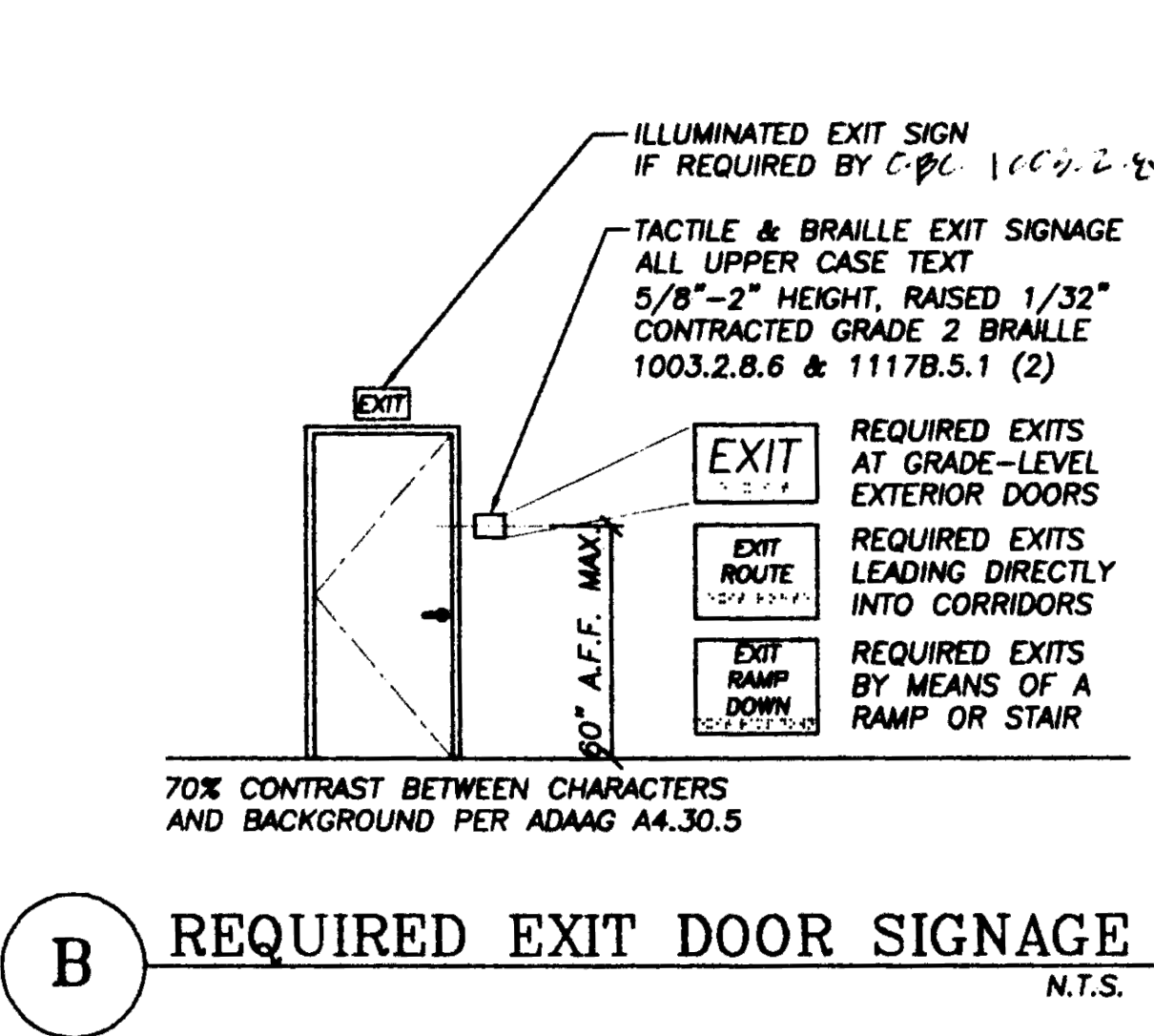
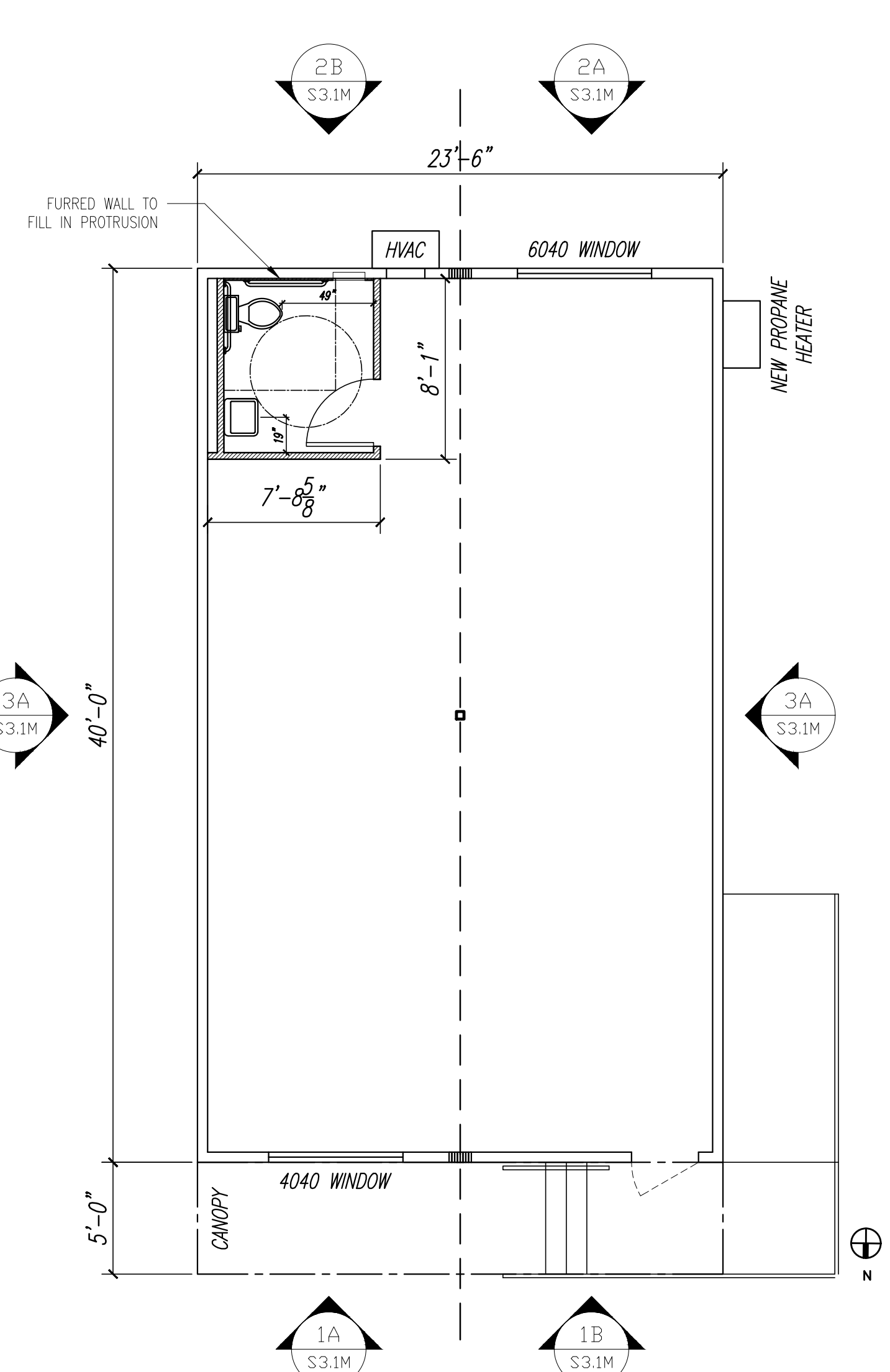
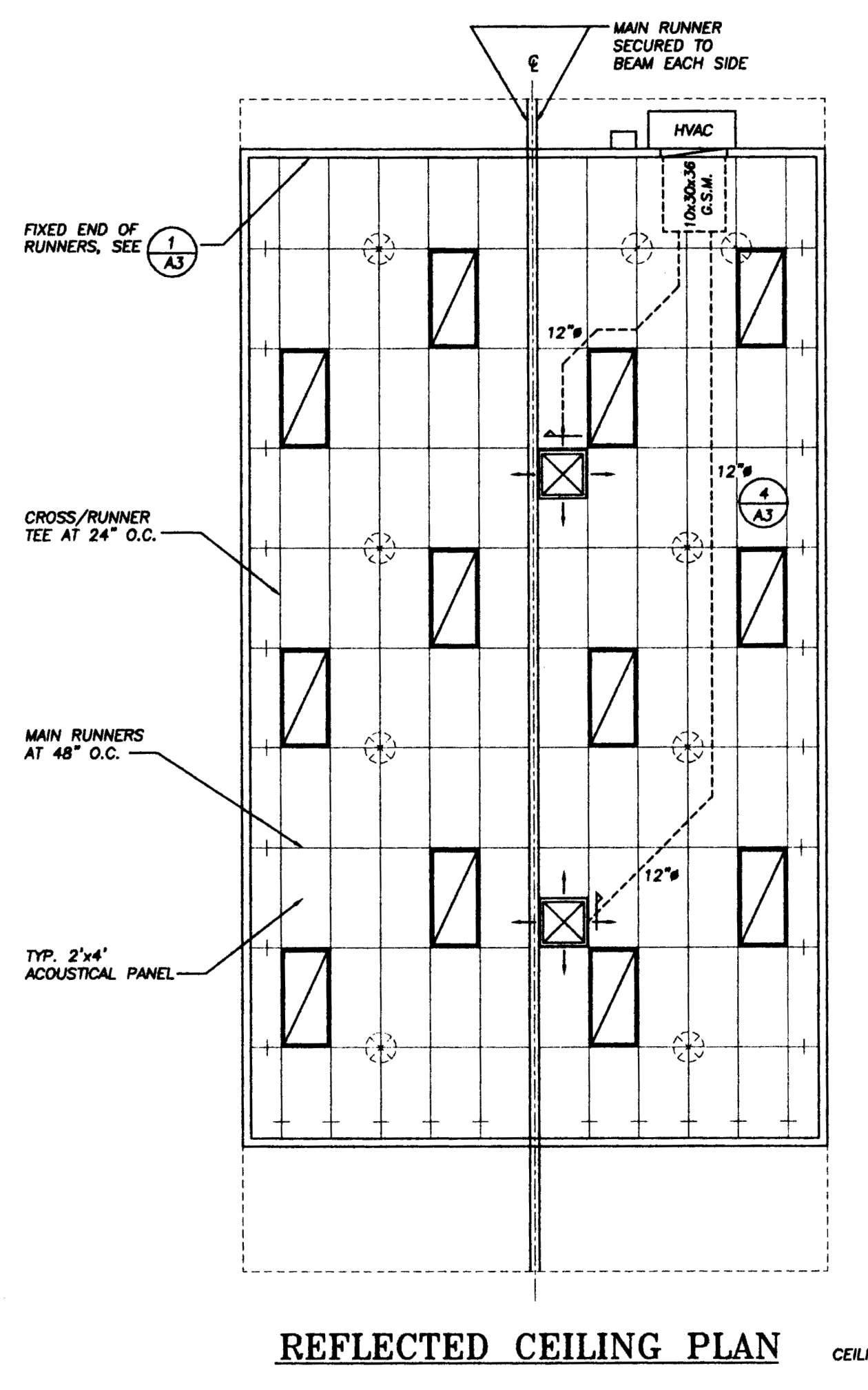
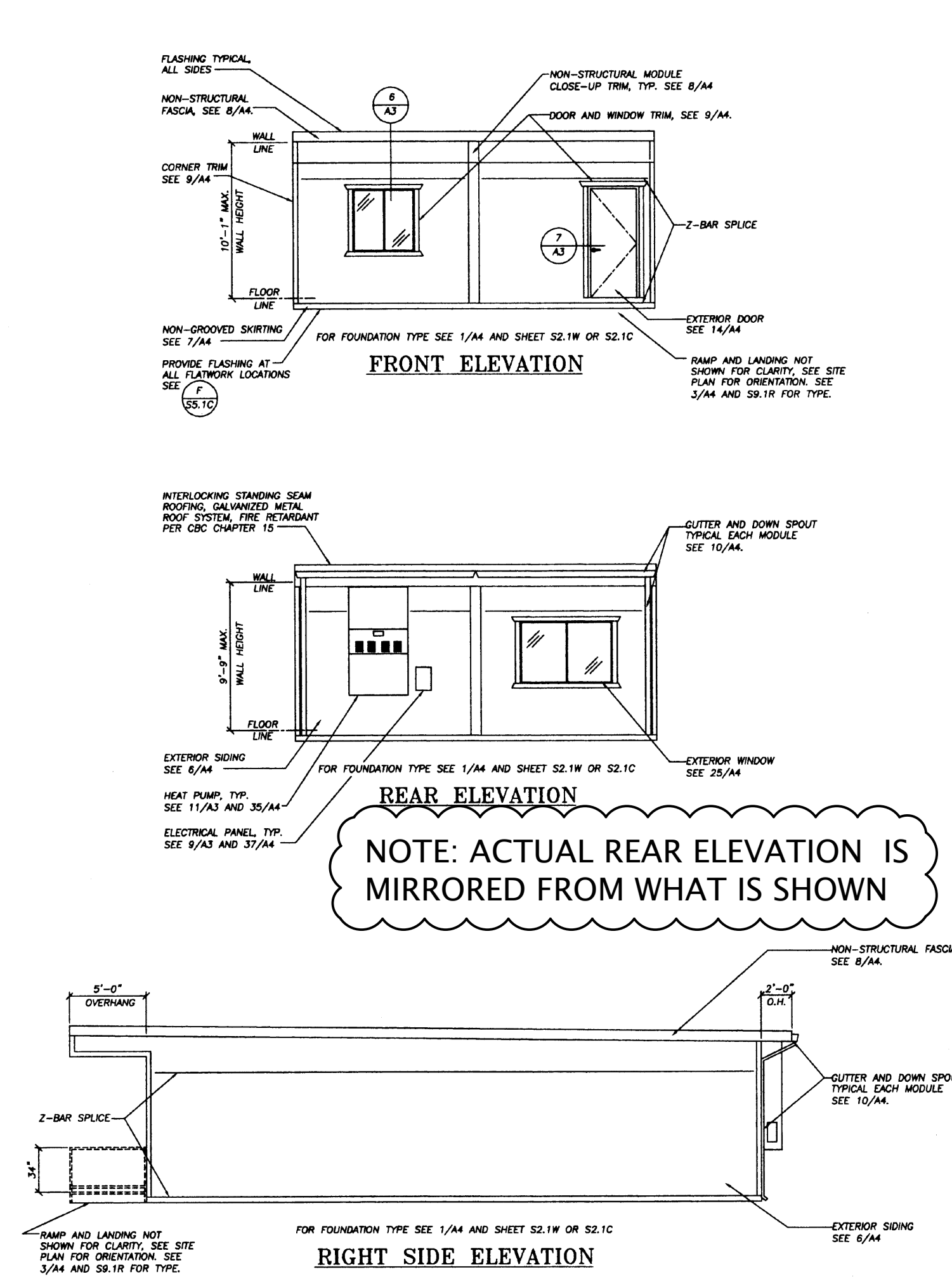
CONNECTED LOAD: KVA 16.2 + 230V = 70 AMPS

* MAY BE HIGHER IF WATER HEATER IS USED.

PANEL LISTED FOR USE AS SERVICE EQUIPMENT
* HACR RATED C.B. WITH 'LOCK-OFF' CLIP

ELECTRICAL NOTES

- GROUNDING OF ELECTRICAL SYSTEM PER DETAIL 8/A3. SEE GROUNDING OF BLDG COMPONENT NOTES, SHEET A1.
- IF MAIN FUSES ARE NOT PROVIDED IN THE HEAT PUMP UNIT BY THE EQUIPMENT MANUFACTURER, THE HVAC UNIT CIRCUIT BREAKER(S) MUST BE HACR RATED.
- A LOCK OFF CLIP IS TO BE PROVIDED FOR THE HEAT PUMP FEEDER CIRCUIT BREAKER.
- ALL WIRING TO BE IN MINIMUM 1/2" CONDUIT.
- ALL RACEWAYS SHALL CONTAIN EQUIPMENT GROUNDING CONDUCTOR PER NEC 250-95.
- CONDUCTORS TO BE LISTED FOR USE AT 75° C MINIMUM. DERATING MAY BE REQUIRED OF 60° C RATED WIRE (TW).
- MAIN CIRCUIT BREAKER PER NEC 230-70.



LEGEND:

S	SWITCH AT 48" AFF	⊠	2'x4' RECESSED LIGHT FIXTURE SEE DET. 3/A3 AND SPECS. 40/A4
⊕	WALL RECEPS, MIN. 15"-18" AFF, UON	⊠	24"x24" SUPPLY AIR GRILL WITH DAMPER SEE DET. 5/A3
⊕	4-PLEX RECEPS	⊗	LATERAL RESTRAINT WIRES (12 GA.) SEE DET. 2/A3. NOTE: (3) 12 GA. LAT. RESTRAINT WIRES EA. SIDE AT DUCT LCTN. ONLY
⊕	220 OUTLET	⊠	ELECTRICAL PANEL PER SCHEDULE
⊕	DEDICATED CIRCUIT	⊕	THERMOSTAT +60° (SEALED)
⊕	FIRE ALARM PULL STATION J-BOX AT MAX. 48" AFF (PER SPECS.)	⊕	WALL CLOCK W/ RECEP AT + 84"
⊕	FIRE EXTINGUISHER BRACKET AT MAX. 48" AFF (PER SPECS.)	⊕	DATA
⊕	FIRE ALARM HORN J-BOX AT 7'-6"± AT EXTR. & 6'-8" AT INTR.	⊕	DATA/PHONE
⊕	LIGHT FIXTURE (SEE SPECS. 39/A4)	⊕	PHONE
⊕	EMPTY CONDUIT TO FIRE ALARM SYSTEM JUNCTION BOX W/ W.P. COVER	⊕	FIRE ALARM STROBE (ELEV. RANGE: +80" MIN. AFF & +96" MAX. AFF TO BOTTOM OF LENS)
⊕	SMOKE DETECTOR BELOW CLG. AND HEAT DETECTOR ADV. CLG. (PROVIDED BY OTHERS, SEE FIRE ALARM SUBMITTAL)	⊕	EXHAUST FAN
⊕	[] REQUIRED	⊕	SIGNAGE BY OTHERS, SEE DETAILS A-B ON THIS SHEET
⊕	[] NOT USED THIS PROJECT		

AEI
Agee Engineering, Inc.

Agee Engineering, Inc.
INDUSTRIAL BUILDING DESIGN
1724 Alicante St. Davis, CA
(916) 607-0830
sagee@agee-engr.com

REGISTERED PROFESSIONAL ENGINEER
No. C-31396
EXP. 12-31-2024
CIVIL
STATE OF CALIFORNIA
Date Signed:

**Portable Classroom Project for
The Church on the Mountain**
384 South Landing Rd., Crowley Lake, CA. 93546

REVISIONS

NO.	DATE	DESCRIPTION

FLOOR #
REFLECTED CEILING PLANS, EXTERIOR ELEVATIONS

DATE: 5-22-24
JOB NO.: 24-05

DRAWN BY: JTM
CHECKED BY: JTM

A2.0