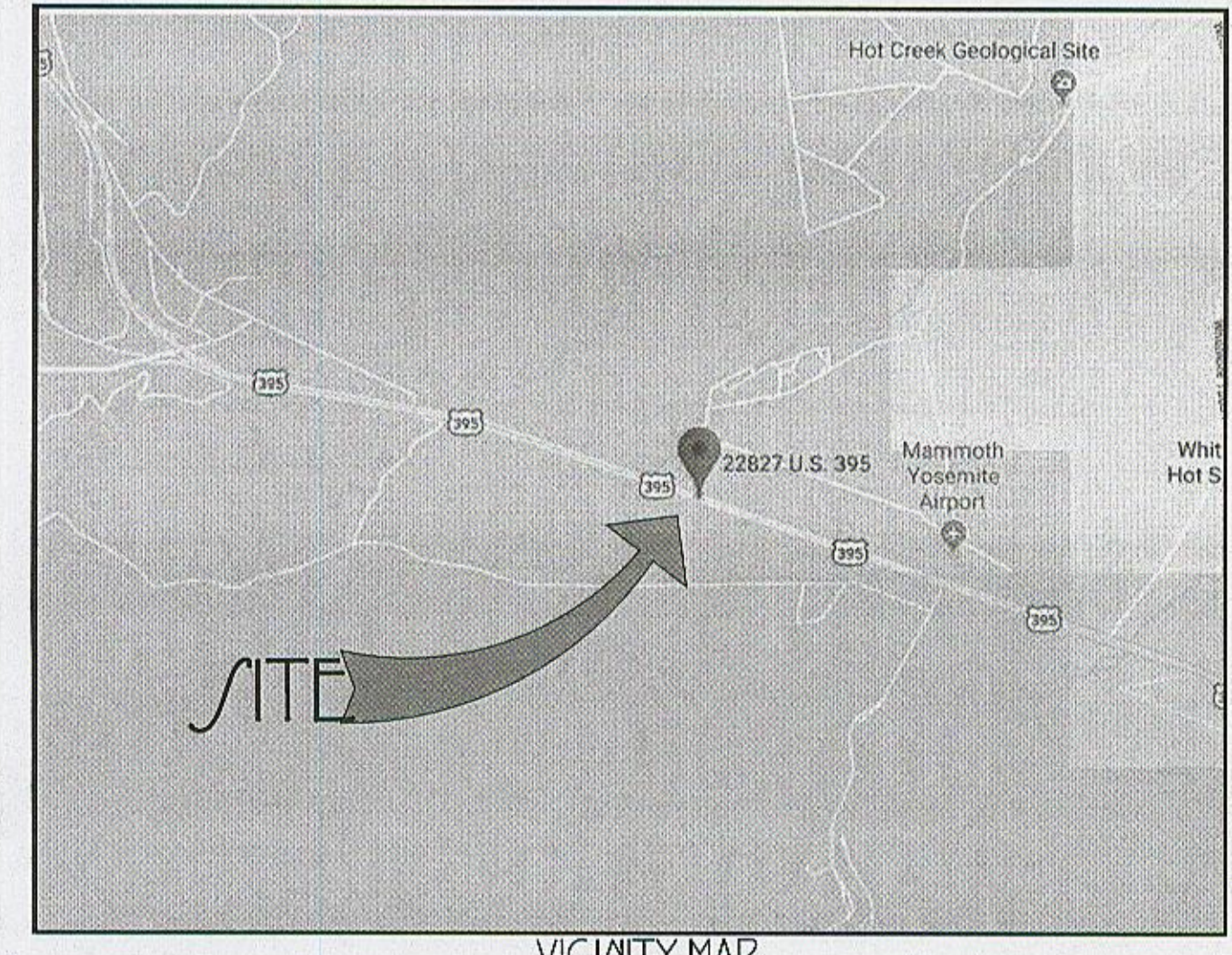
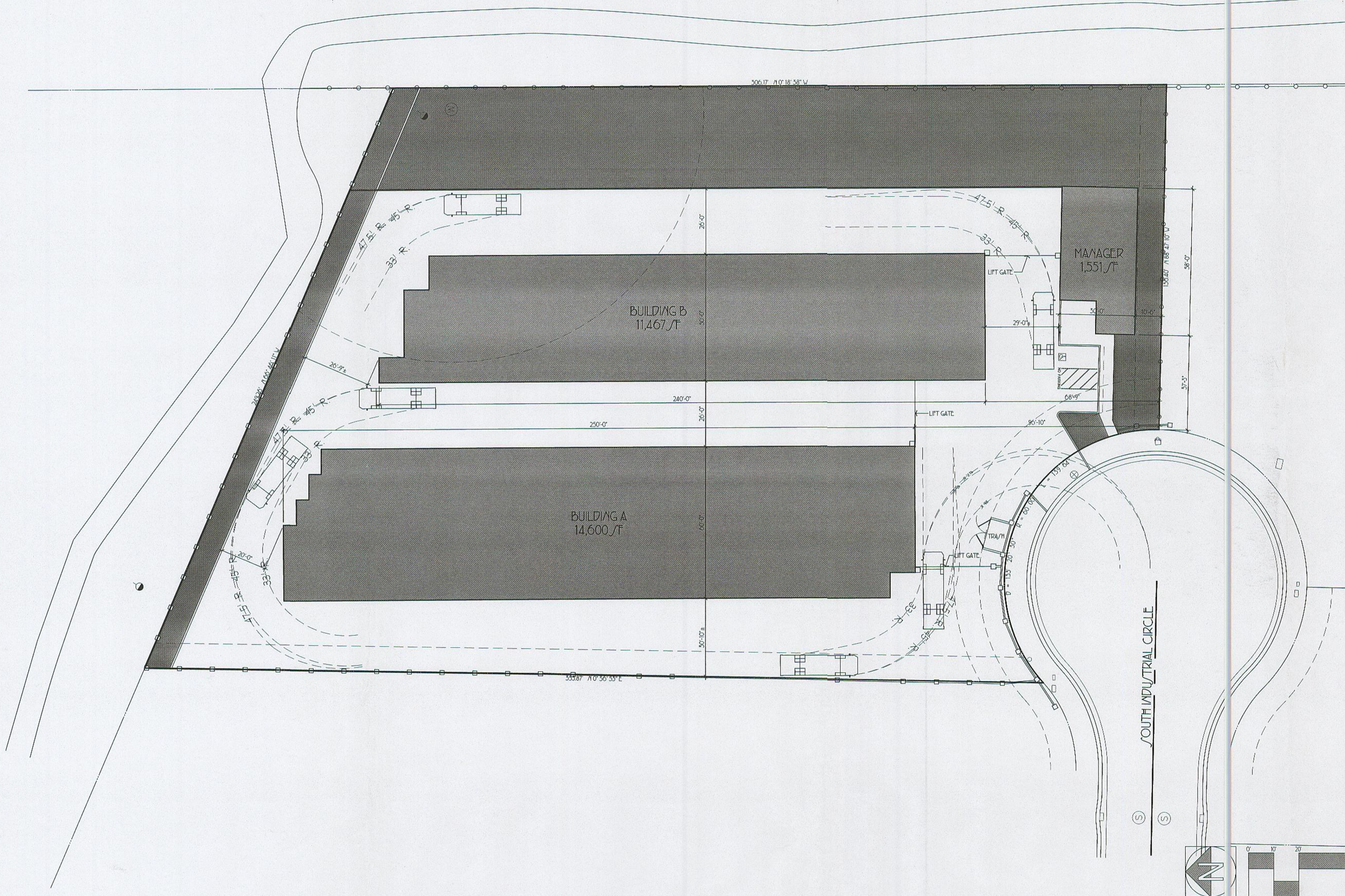


PROJECT DATA

| | | |
|---|--|------------------------|
| SITE / SQUARE FOOTAGE / | | |
| BUILDING / SITE COVERAGE | 27,618 / SQUARE FEET (55.7%) | |
| LAND / SITE COVERAGE | 16,287 / SQUARE FEET (31.9%) | |
| HAZ / SITE COVERAGE | 55,415 / SQUARE FEET (111.2%) | |
| GROSS / SITE AREA | (1.77 ACRES) 77,515 / SQUARE FEET (100.0%) | |
| PARKING DATA | | |
| PARKING - REQUIRED | PER PERMITS | |
| TOTAL PARKING REQUIRED | | |
| PARKING - PROVIDED | | |
| STANDARD / SPACE | 1 / SPACE | |
| HANDICAP / SPACE | 1 / SPACE | |
| COVERED / SPACE | 2 / SPACE | |
| TOTAL PARKING PROVIDED | 4 / SPACE | |
| BUILDING DATA | | |
| CONSTRUCTION TYPE | OFFICE TYPE V-A / PRANLEED | |
| ZONING | STORAGE TYPE B-A / PRANLEED | |
| OCCUPANCY GROUP | PERMITS / TYPE | |
| | -U1 (STORAGE) | |
| | B (OFFICE) | |
| | R-1 (APARTMENT) | |
| | U (GARAGE) | |
| | 4 MAXIMUM | |
| NUMBER OF EMPLOYEES / | 057-200-005 | |
| AREA / ORZ / PARCEL NUMBER | | |
| PROJECT TYPE | PERMITS / STORAGE FACILITY | |
| BUILDING / SQUARE FOOTAGE / | | |
| BUILDING / | BUILDING FOOTPRINT | TOTAL / SQUARE FOOTAGE |
| MANAGER / BUILDING | 872 / SQUARE FEET | 872 / SQUARE FEET |
| OFFICE | 0 / SQUARE FEET | 1,445 / SQUARE FEET |
| APARTMENT | 679 / SQUARE FEET | 679 / SQUARE FEET |
| GARAGE | 0 / SQUARE FEET | 240 / SQUARE FEET |
| BALCONY (NOT A PART OF TOTAL) | 1,551 / SQUARE FEET | 5,256 / SQUARE FEET |
| UB-TOTAL | | |
| STORAGE BUILDINGS | | |
| BUILDING A | 14,600 / SQUARE FEET | 28,767 / SQUARE FEET |
| BUILDING B | 11,467 / SQUARE FEET | 53,495 / SQUARE FEET |
| UB-TOTAL | 26,067 / SQUARE FEET | 62,262 / SQUARE FEET |
| TOTAL | 27,618 / SQUARE FEET | 65,498 / SQUARE FEET |
| PROJECT DIRECTORY | | |
| APPLICANT / OWNER | | |
| CHIP POLVOORDE / PALM / PROPERTY 7100 W / T FLORIDA AVENUE HEMET, CALIFORNIA 92345 TELEPHONE: (951) 926-1176 EMAIL: CHIP@PALMPROPERTY.COM | | |
| ARCHITECT | | |
| KEN CARRELL / ARE A / OCIMATE / 25422 TRABUCO ROAD / SUITE 105-A LAKE FOREST, CALIFORNIA 92550 TELEPHONE: (949) 505-4752 FAX / TOLL: (949) 505-4165 | | |



ARE Associates
Architecture Real Estate

25422 Trabuco Road
Lake Forest, California
v. 949.505.4752
www.AREAssociates.com

/Suite 105-A
92650-2796
f. 949.505.4165
ken@AREAssociates.com



JOB NUMBER 18075
DRAWN BY MKC
SCALE 1"=20'-0"
DATE 18 / EP 24
REVI/10/V

The drawings and specifications are the property of ARE Associates, Inc. and shall remain the property of ARE Associates, Inc. No part of these drawings or specifications may be reproduced or transmitted in any form or by any means, electronic, mechanical, photocopying, recording, or by any information storage and retrieval system, without the prior written permission of ARE Associates, Inc. Copyright © 2018. All rights reserved.

OVERALL SITE PLAN

MAMMOTH LAKE'S SELF STORAGE

MAMMOTH LAKE'S, CALIFORNIA

1