



Hilton Creek Trailhead to FS Rd 4S137 Trail Proposal (Hilton / BLM trail)

Submitted by Mono County Sustainable Recreation and funded by Community Service Area 1 (CSA1) to:
United States Department of Agriculture, Forest Service, White Mountain Ranger District
United States Department of Interior, Bureau of Land Management, Bishop Field Office



Use trail at FS Rd 4S137 (looking east to Hilton Creek Trailhead)

Proposal Date: March 2024

Proponent Name: Mono County
(CSA1 funded)

Ranger District / Field Office:
White Mountain & Bishop

County: Mono

Requested Actions:

- 1) Agencies approval of an existing use trail from the Hilton Creek Trailhead to Forest Service Rd 4S137 above the BLM Campground
- 2) Forest Service & BLM cooperation for Mono County to hire and fund independent NEPA/CEQA consultants to work on future non-motorized multi-use trail concepts

General Location: Above Crowley Lake BLM Campground

Purpose, Background:

Mono County Sustainable Recreation and CSA1 wish to support and fund

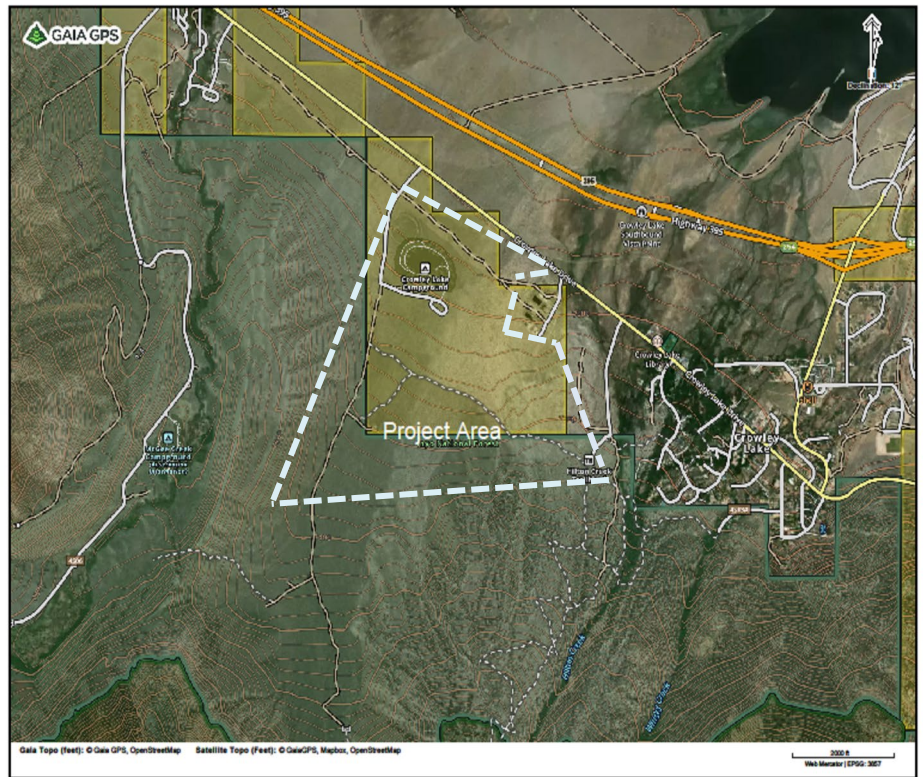
new non-motorized multi-use trails in South County. One short-term goal is to legalize existing use trails. This non-system trail has access from Hilton Creek Trailhead, with one sign at western end of the trail where it intersects with Forest Service Rd 4S137. The Hilton / BLM Trail is an existing use trail approximately 1.43 miles in length shown in blue. The tread width is approximately 12 inches. There are some simple reroutes to make the trail more user friendly. This trail receives local usage but no maintenance. A second goal is to utilize existing public facilities (parks, campgrounds, parking areas, etc.) as access / exit nodes, build new trails to connect these facilities, and access to and from our local communities. There are many future trail options in this area with access from Hilton Creek Trailhead, Crowley Lake Drive, and the BLM Campground. A few ideas are shown in purple and orange but are not part of this submittal.

Implementation:

Implementation of this trail project includes:

1. Legalize approximately 1.43 miles of an existing use trail to 18-to-24-inch tread width shown in blue.
2. Decommission .36 miles of steeper trail segments and some with large boulders, but this adds .68 miles to the existing trail but makes for a better user experience.
3. This area has high potential for additional trails, has good access, parking, and is close to the community. Some future ideas are shown in purple, orange, and red but are not part of this proposal.
4. New prescribed/approved regulatory and wayfinding signage providing information such as location of trail, allowable uses, and trail etiquette.
5. Any NEPA/CEQA studies required to support Forest Service / BLM decisions, construction, signage, and on-going maintenance to be funded by Mono County (CSA1).

Converting non-system trails to system trails involves bringing these trails into the Forest Service and BLM multi-use non-motorized trail design standards, Best Management Practices, and future maintenance. Mono County, Inyo National Forest, and BLM have formal agreements with seasonal trail maintenance program(s) in place.



Environmental/Heritage

Any necessary surveys and reports will be paid for by Mono County (CSA1) as part of any necessary NEPA/CEQA review.

Other Benefits and Goals

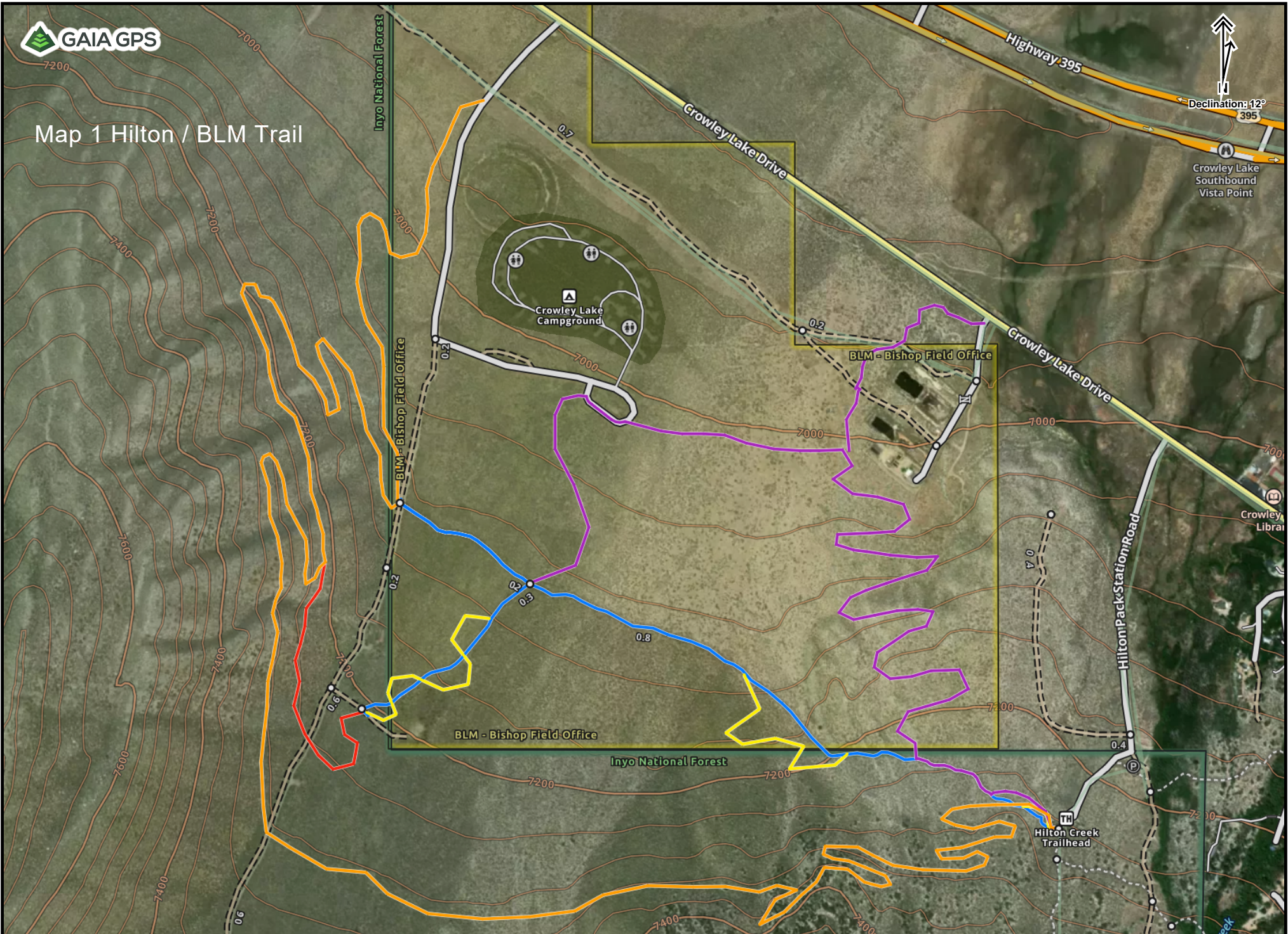
This trail has been a locally used trail for a long time. It also creates future opportunities for a stacked loop system.

- Trail has access to and from Hilton Creek Trailhead and with a future addition will tie into the Crowley Lake BLM Campground (CSA1 goal to use existing infrastructure),
- Water and restrooms are available on a seasonal basis at the Crowley Lake BLM Campground (CSA1 goal to use existing infrastructure),
- It has already been stated but this trail exists. If permitted, some reroutes are needed to make the trail more user friendly around large boulders and grade changes.
- Project is consistent with Mono County General Plan, and Regional Transportation Plan.
- Finally, Mono County will pay (via CSA1) for all studies, construction, and regular on-going maintenance.

Future efforts

- **CSA1 projects in the next 1-3 years - not a part of this proposal:** *A future concept for a stacked loop trail system is shown in purple, orange, and red. CSA1 would like to start work and pay for any needed studies to keep future projects moving forward.*

Map 1 Hilton / BLM Trail



Hilton Creek Trailhead to BLM Campground (Hilton / BLM)	
Route and color	distance miles
Hilton to BLM - existing user created trail - blue	1.43
Hilton to BLM - new reroutes to user trail - yellow	0.68
Total new trails	2.11
<i>Future campground loop / 2-5 years - purple</i>	2.27
<i>Future moraine loop / 2-5 years - orange</i>	4
<i>Future connector to orange trail - red</i>	0.4
<i>future trails / 2-5 years total</i>	6.67
Map key - Hilton / BLM - attachment 2	