

A proposal from Community Service Area (CSA) 1 to Inyo National Forest to formalize the Tom's Place connector to Lower Rock Creek Trail

November 27, 2023

Overview

In late September 2023, Marcella Rose (Mono Co Public Works), John Connolly (CSA 1 Board Member), and Gerry LeFrancois (trail user) met with Dannon Dirgo (INF) to discuss trails in southern Mono County. The group spent approximately a half day on the ground riding and walking various proposals in the greater Long Valley area.

Since the existing unpermitted trail from Tom's Place to Lower Rock Creek Trail has been around for over 20 years, is heavily used, follows a utility corridor for much of its length, CSA 1 felt this was the best place to start adding a new multi use single track network in southern Mono County. Trail users, specifically mountain bikers, have very limited options to ride single track in south County. The bulk of the mountain bike trail network is on Mammoth Mountain which is pay to play (a few exceptions exist like Lower Uptown/Downtown, Mountain View, Mammoth Rock, Meadow Connector, Sand Canyon, Lower Rock Creek trails).

Goals - immediate

- 1) To establish a legal multi use trail from the Rock Creek Road / Crowley Lake Drive intersection to Lower Rock Creek Road and Trail,
- 2) Utilized the existing utility corridor, trail, and forest service roads,
- 3) Option a) construct an uphill climbing trail to avoid the steep downhill gully, option b) connect this trail to both Holiday Campground & French Camp so people can ride right from the campground,
- 4) CSA 1 would upgrade, build, reroute as necessary, sign, and maintain as determined by Inyo National Forest if trail is approved,
- 5) Utilized existing parking areas, campgrounds, and other public facilities in establishing any future trails.

Goal - long term

- Construct a multi use trail from Sherwin Creek Campground to French Camp basically following the 7,200 to 7,600 foot contour along escarpment, via Convict Lake and McGee Creek Campgrounds, Hilton Creek Trailhead, etc,
- New trails outside of Mammoth Lakes would disperse mountain bikers
- Include fire breaks or fuel thinning projects around communities during trail development, if appropriate, and
- Include 4) & 5) from above.

Concept

Attached is an aerial photo that references 19 on the ground photographs of the current trail / road from Tom's Place to Lower Rock Creek, and a CalTOPO map showing Forest Service roads in the area. The trail has been around for over 20 years, and is heavily used by mountain bikers, trail runners, and walkers. Parts of the trail are on Forest Service Roads

4S1209D, parallels FS Road 4S120, and uses FS Road 4S120K and L to access Lower Rock Creek Road and Trail.

If support letters are needed, CSA 1 is happy to request letters from additional user groups, various businesses and organizations.

The project is consistent with the Mono County Regional Transportation Plan, Long Valley Community Policy section:

GOAL 27. Provide and maintain a safe and efficient circulation system in Long Valley while retaining the rural qualities of the area.

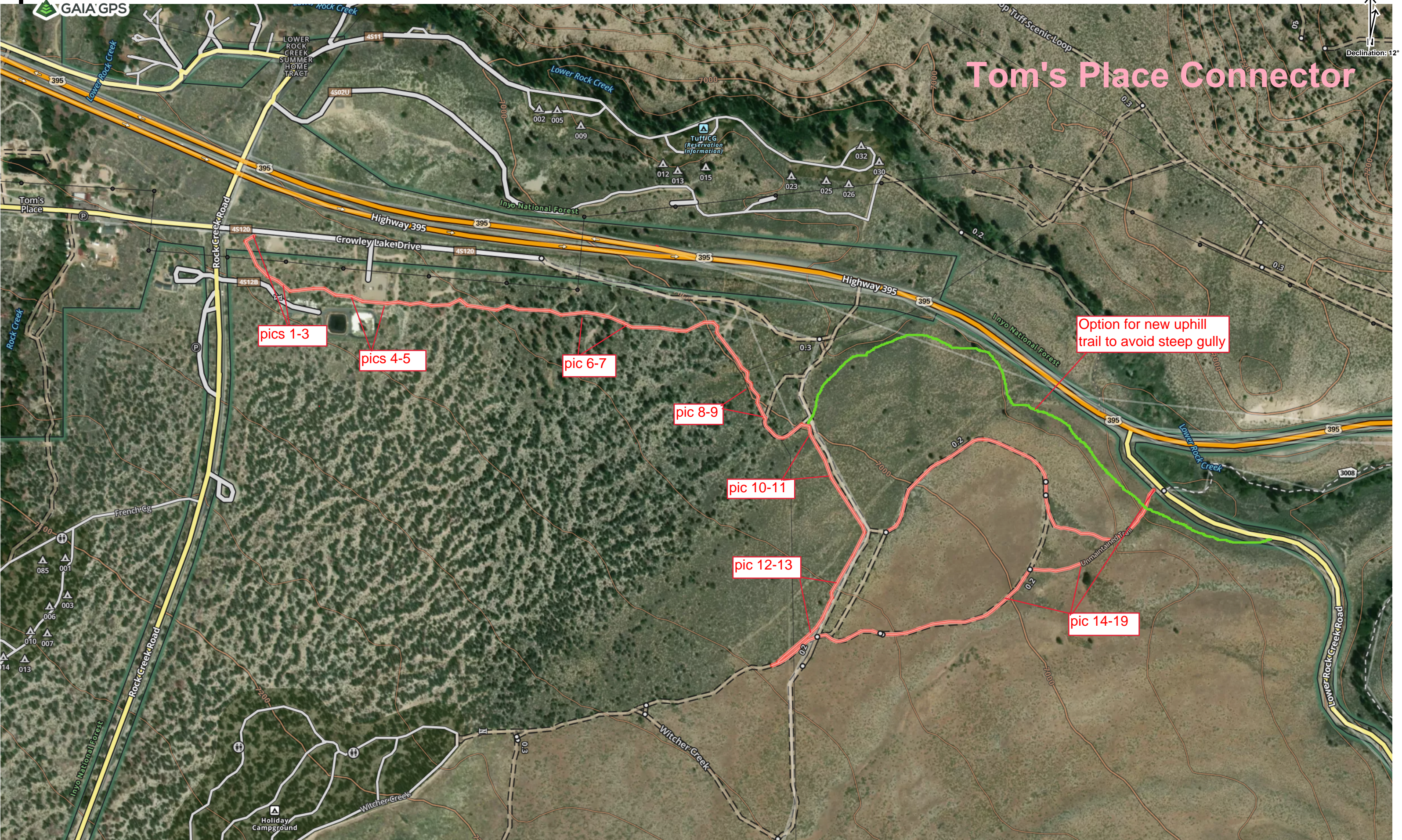
Objective 27.A. Provide a coordinated trail system for use by bicyclists, pedestrians, or equestrians.

Policy 27.A.1. Pursue feasibility and local support for development of the following regional trail connections:

- Long Valley to the Convict Lake Road to enable non-motorized travel off US 395;
- Around Crowley Lake on Benton Crossing Road;
- Long Valley to Mammoth Lakes, possibly with a spur to Hot Creek; and
- Tom's Place to Lower Rock Creek Road.

Respectfully submitted to INF for consideration by the CSA 1 Board.

Tom's Place Connector



pics 1-3

pics 4-5

pic 6-7

pic 8-9

pic 10-11

pic 12-13

Option for new uphill trail to avoid steep gully

pic 14-19





























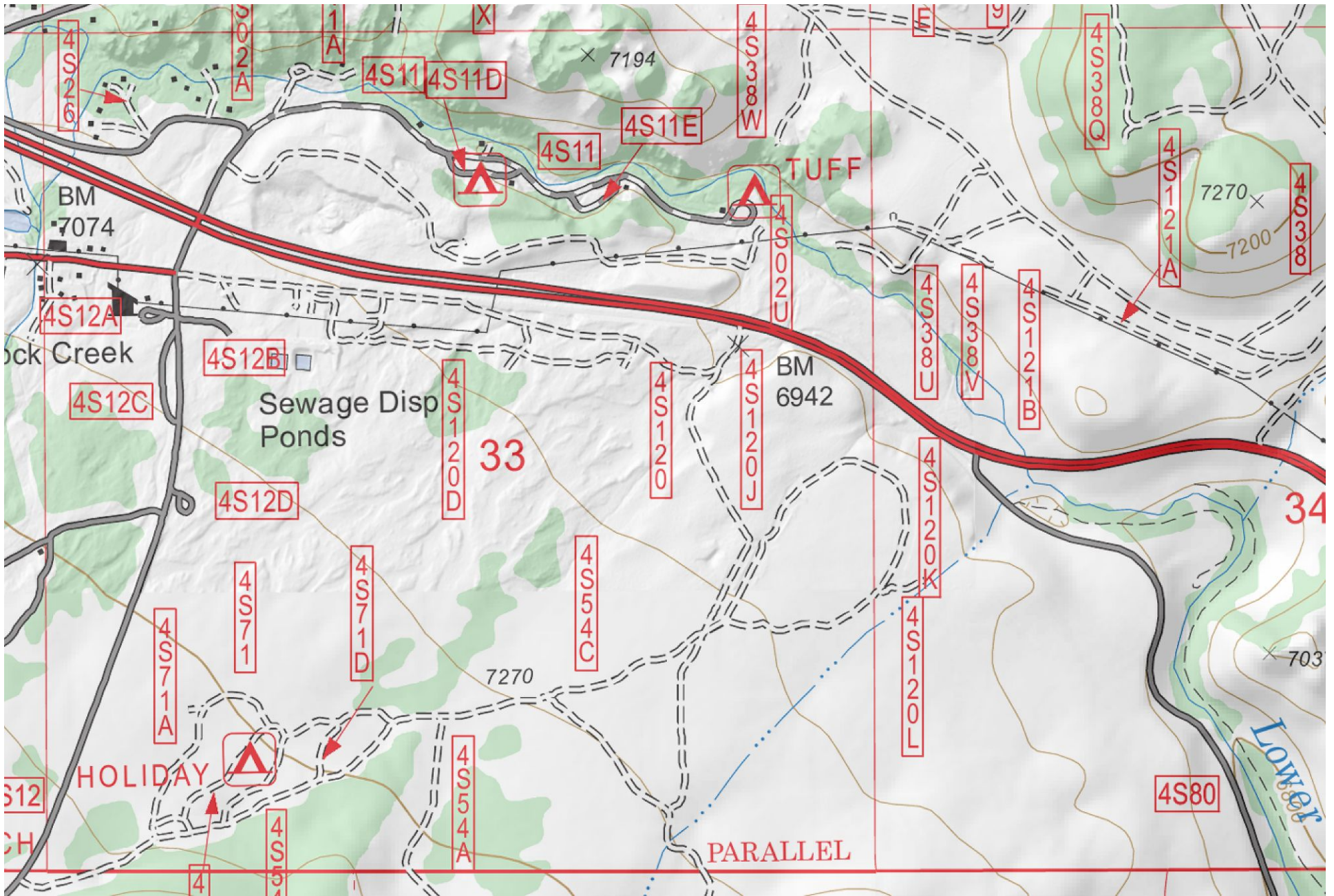












Mercator Projection
 WGS84
 UTM Zone 11S
 CALTOPO

