



COUNTY SERVICE AREA #1

Television Service

CROWLEY LAKE - LONG VALLEY

Post Office Box 3861

Mammoth Lakes, CA 93546

August 22, 2023

Supervisor Rhonda Duggan
P.O. Box 715
Bridgeport, CA 93517
Via email: rduggan@mono.ca.gov

Re: Support for trails in the Long Valley area

Dear Supervisor Duggan,

Community Service Area 1 (CSA 1) would like to request your support by submitting a list to the Inyo National Forest (INF) on three trails currently used by members of the public but not legal trails. The intent would be to legalize these trails in order to improve access, signage, and trail function for legal use by residents and the visiting public.

These trails currently exist for the most part and include:

- a) the Toms Place to Lower Rock Creek Connector
- b) the social trail above the BLM campground to the Hilton/Davis Lake Trailhead
- c) the trail road access from Tobacco Flat down to Crowley Lake Drive

Any assistance you can offer to help CSA 1 make these projects a priority for the Inyo National Forest would be greatly appreciated.

Sincerely,

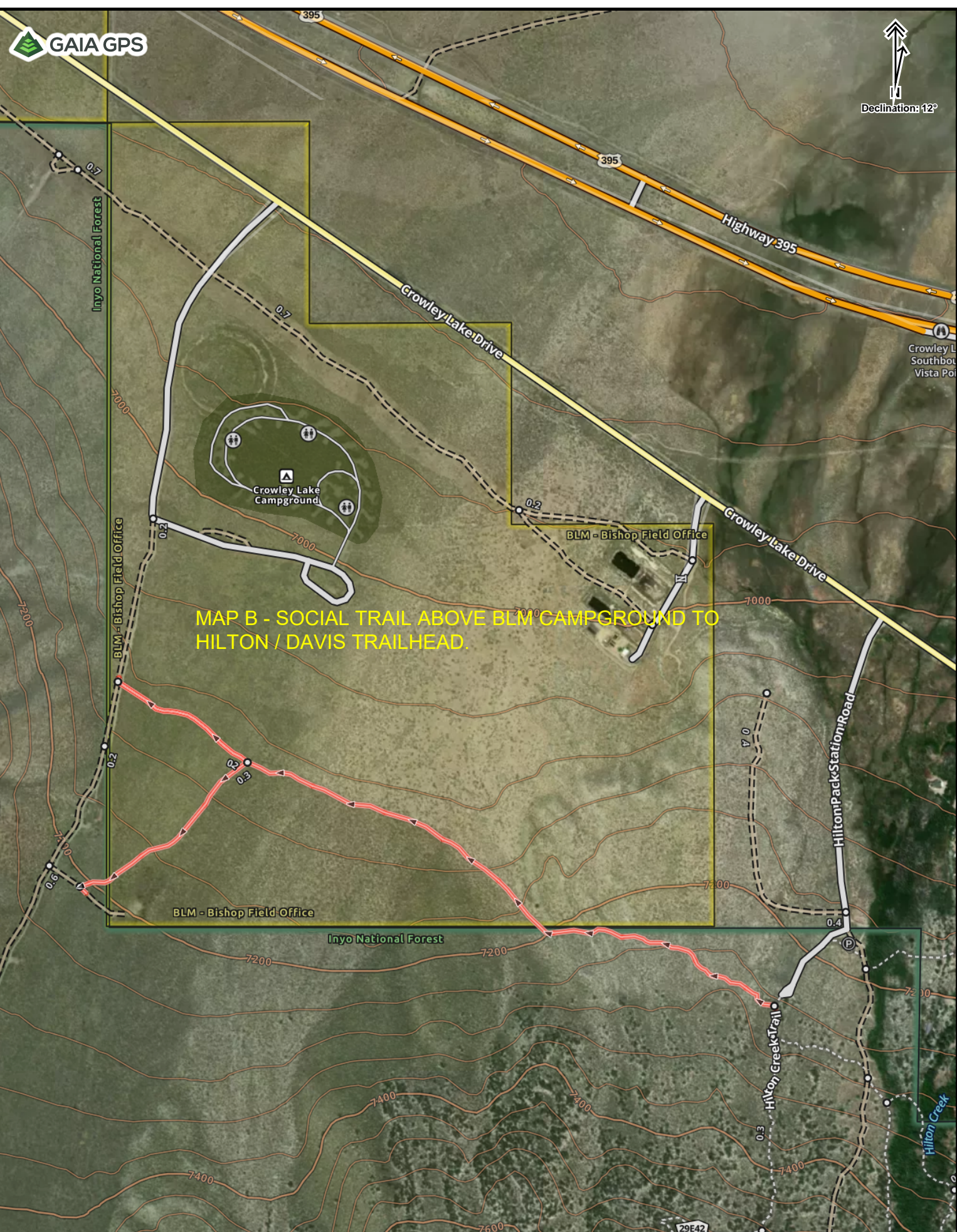
A handwritten signature in blue ink that reads "Denise Perpall".

Denise Perpall, Chair CSA 1

MAP A - TOM'S PLACE TO LOWER ROCK CREEK CONNECTOR



MAP B - SOCIAL TRAIL ABOVE BLM CAMPGROUND TO HILTON / DAVIS TRAILHEAD.





MAP C - TRAIL ROAD ACCESS FROM TOBACCO FLAT TO CROWLEY LAKE DRIVE