

NRCS Collaboration with Private Landowners, Agencies, and Grazing Permittees



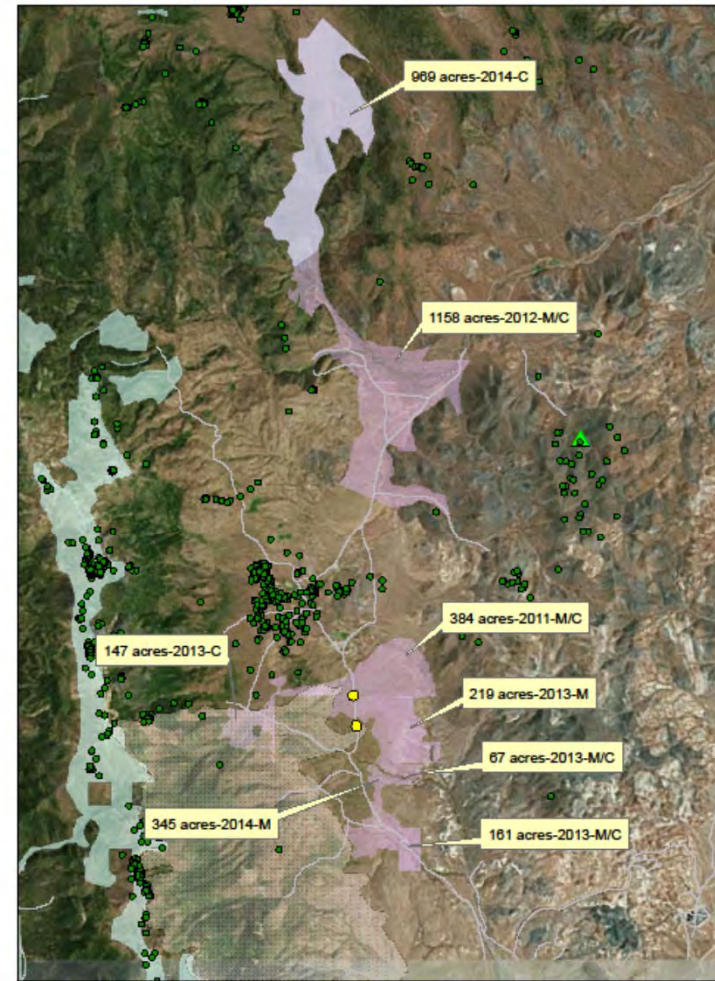
NRCS EQIP projects 2011-2014:

Permittees = 3,222* acres
Private Landowners = 228 acres

* Includes Pine Nut Land Health Project acres



BUCKSKIN PINYON/JUNIPER REMOVAL PROJECTS



- Sage Grouse Telemetry Points
- ▲ Sage Grouse Lek
- Roads
- Blown Pine 2013
- Completed PJ Removal
- Proposed pine_nut_land_health_treatment_units

This map is not a legal survey and is intended for planning purposes only.



Pinyon-Juniper Removal in Nevada

Before



After (mastication)



Too many leave trees? Drone shot:



Pinyon-Juniper Removal in Nevada cont...

Before



After (mastication/chainsaw)



Nevada cont...

Before

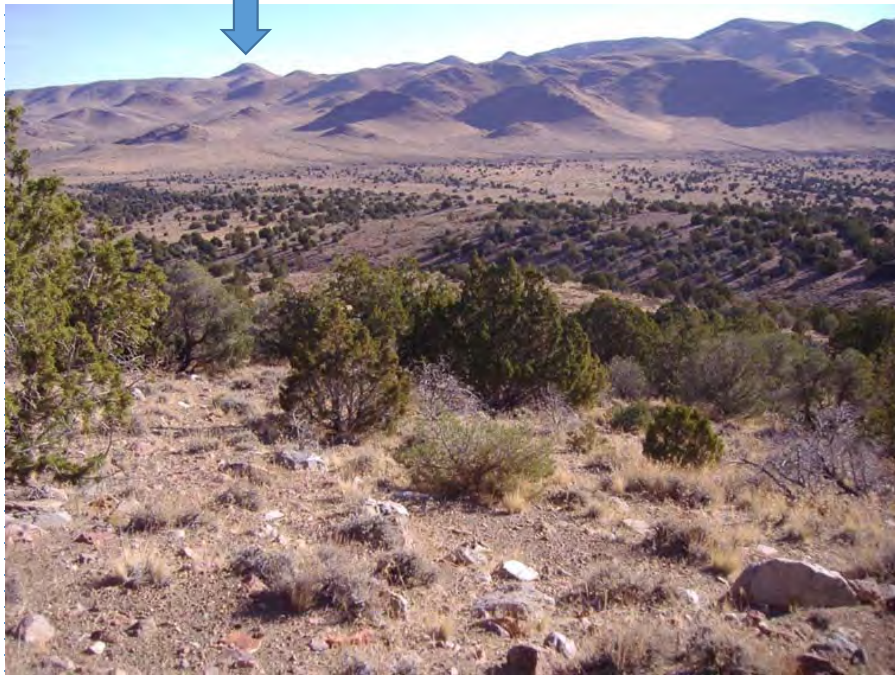


After (mastication/chainsaw)



Nevada cont...

Before



After (chainsaw/mastication)



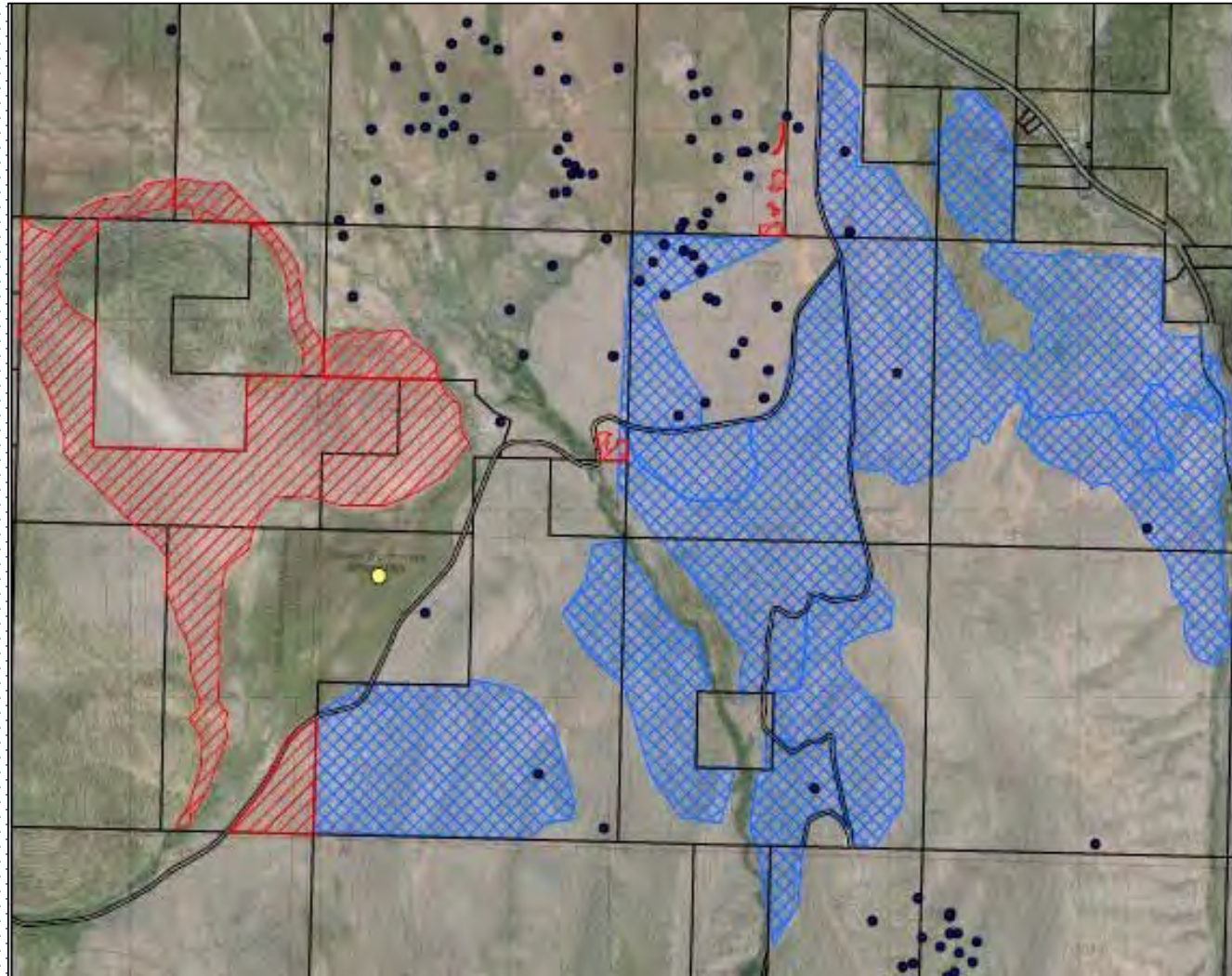
Pinyon-Juniper Removal in California

BLM (blue) = 2758 acres

NRCS (red) = 533 acres

● = Active Lek

● = SG telemetry locations



Pinyon-Juniper Removal in California

Before



After (chainsaw)



California continued...

Before



After



Questions?



BUCKSKIN PINYON/JUNIPER REMOVAL PROJECTS

