



Mono County

2015 State and Federal Legislative Platform

Reviewed and adopted by the Mono County Board of Supervisors

Adopted February 10, 2015

Mono County Board of Supervisors

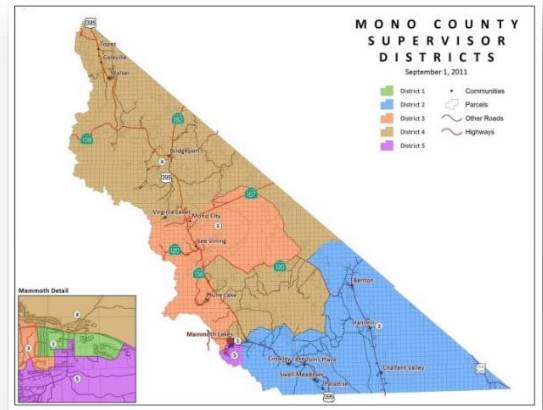
Larry Johnston District 1

Fred Stump District 2

Tim Alpers..... District 3

Tim Fesko District 4

Stacy Corless..... District 5



Jim Leddy
County Administrative Officer
PO Box 696
Bridgeport, CA 93517
Tel: (760) 932-5410
Email: jleddy@mono.ca.gov

Table of Contents

	Page No.
Introduction	4
General Guidelines.....	6
State Priorities.....	7
Protect County Revenue Sources	7
Encourage Regulation Relief/Reform	7
Natural Resources and Agriculture.....	7
Public Safety & Criminal Justice	8
Transportation	9
Administrative Support & Fiscal Services	10
Health and Human Services	10
Federal Priorities.....	12
Support Funding/Program Preservation.....	12
Natural Resources and Agriculture.....	13
Endangered Species	14
Public Safety & Criminal Justice	14
Transportation	14
Health Reform.....	14
County Attractions	16
Elected Officials.....	18

Introduction

Mono County, California, is a rural county situated between the crest of the Sierra Nevada Mountains and the California/Nevada border. Accessed by state-designated Scenic Byway US Highway 395 which weaves its way north-south, Mono County is 108 miles in length, and has an average width of only 38 miles. With dramatic mountain boundaries that rise in elevation to over 13,000 feet, the county's diverse landscape includes forests of Jeffrey and lodge pole pine, junipers and aspen groves, hundreds of lakes, alpine meadows, streams and rivers, and sage-covered high desert. The county has a land area of 3,030 square miles, or just over 2 million acres, 94% of which is publicly owned. Much of the land is contained in the Inyo and Humboldt-Toiyabe National Forests, as well as the John Muir and Ansel Adams Wilderness areas. As a result, Mono County offers vast scenic and recreational resources, and has unsurpassed access to wilderness and outdoor recreation and adventure.

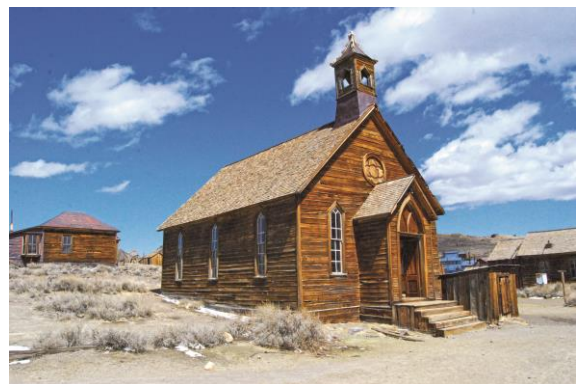


Chris Tinker/Mono County Tourism/ Mono Lake

The county is home to, and named after Mono Lake, which is a large high-desert saline lake with intriguing limestone tufa formations, and is a vital habitat for millions of migratory and nesting birds. Mono Lake is just one of the reasons that Mono County was listed in the "Top 10 U.S. Destinations to Visit" in 2013, by pre-eminent travel guide publisher, *Lonely Planet*, along with the historic gold rush town of Bodie, which during its heyday in

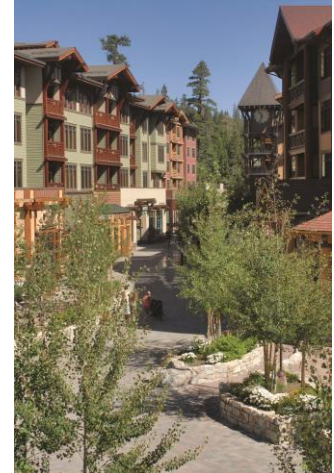
the late 1800's was home to as many as 10,000 people, and is now maintained in a state of "arrested decay" for the public to come and enjoy. The travel guide also called out Devils Postpile National Monument, which stretches 60 feet into the sky like a giant stone pipe organ and is one of the world's finest examples of columnar basalt. Yet another natural wonder, Yosemite National Park is only 12 miles from Lee Vining and Mono Lake; the park's east entrance gate is located at the top of Tioga Pass, which is open seasonally from mid-May to early November.

Mono County has several small towns and charming villages, each with their own scenic beauty, year-round recreational opportunities, natural and historical attractions, and unique characteristics. The County seat is proudly located in Bridgeport where the original courthouse is the second oldest in the state to be in continuous use. The only incorporated town in the county is Mammoth Lakes, which is located at the base of world-renowned Mammoth Mountain Ski Area, with a summit of 11,053 feet, over 3500 skiable acres, 28 lifts, and an average of 400 inches of snowfall annually. Approximately 7,500 people



Alekos McKee/Mono County Tourism/ Bodie

reside in the Mammoth Lakes area year-round, but during the peak winter season, the population swells to over 35,000 when visitors from around the state, country and world come to ski and snowboard and take part in many other winter activities. Sister resort, June Mountain, just 20 miles north of Mammoth, offers uncrowded, wide-open slopes and a more peaceful, family-friendly alternative to busier ski areas.



Mammoth Mountain Ski Area

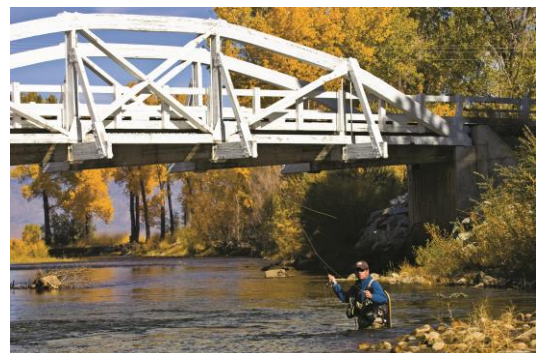
Summer, however, is when Mono County really shines. The region offers countless miles of alpine hiking, superb trout fishing at dozens of well-stocked lakes, streams and rivers, kayaking, cycling, horseback riding, golfing and endless warm-weather adventures. Photographers flock to the county in September and October when it is almost impossible to take a bad photo of the fall color that lights up the Eastern Sierra landscape. *Sunset Magazine* named Mono County one of the “Top 5 places to Hike” in autumn and *TravelAndLeisure.com* listed Mono County as one of “America’s Best Fall Color Drives.” A wide variety of lodging, restaurants and shops are available throughout the county, and commercial air service to Mammoth Yosemite Airport, just a 10 minute drive from the Town of Mammoth Lakes, is available from Los Angeles, San Francisco, Orange County and San Diego on Alaska and United Airlines throughout the winter, and from Los Angeles in summer and fall.



Greg Newbry/ Bridgeport Valley



Shutterstock/ June Lake



Nick Souza/Mono County Tourism/

State and Federal General Guidelines

The Mono County Board of Supervisors supports the general guidelines set forth below. County staff will apply these guidelines in evaluating State and Federal legislation, as well as executive and regulatory actions. It is the Board's objective to implement these guidelines.

To support the County's service to the community, the County should:

- Support legislative and budget efforts that protect and/or enhance local governments revenues, maximize the County's access to state and federal funding sources, and/or increases local funding flexibility;
- Oppose any effort to balance the state budget through the taking of local government resources;
- Support legislation that protects the County's quality of life, its diverse natural resources, and preserves the essence and history of the County;
- Support legislation that provides tax and funding formulas for the equitable distribution of state and federal monies while opposing attempts to decrease, restrict or eliminate County revenue sources;
- Support legislation and budget action which provides additional and continuing funding for local road infrastructure, including complete street features;
- Oppose legislative and administrative actions which would create federal unfunded mandates and/or preempt local decision making authority;
- Support legislation that realigns governmental services in such a manner as to improve the delivery of services and make government more accountable to the people;
- Support the promotion of tourism, filming, and a diversified local economy in the Eastern Sierra in order to achieve strong economic growth and prosperity;
- Continue to support legislation that honors our veterans for their service to our country;
- Support efforts that further the goals outlined in the County's Strategic Plan (once developed and adopted).

State Priorities

1. **Protect County Revenue Sources** - Many County programs are at risk due to the instability of State and Federal funding. The Board supports efforts to sustain funding enabling continuation of critical programs for Mono County's constituents.
2. **Encourage Regulation Relief/Reform** – Given government downsizing at all levels, the Board supports efforts to achieve responsible regulation relief in the following areas:
 - a. **California Environmental Quality Act (CEQA) Reform** –Support legislative reforms to CEQA to simplify and streamline local permit processing, while still protecting the environment. Exemptions to CEQA, such as for infill development, should apply to the smaller communities of Mono County as well as urban areas. Reforms should also avoid the abuse of CEQA for non-environmental issues, such as recent non-environmental motivations.
 - b. **Permit Streamlining** – Support collaborative State involvement in local planning and permitting, rather than oversight roles that add duplicative or redundant reviews (i.e. Mines and Geology, Housing and Community Development). Continue to support efforts for single permit issuance where multiple agencies regulate (i.e. wetlands permit).
3. **Natural Resources and Agriculture**
 - a. **Sustainable Funding for State Parks** – Continue to support measures to sustain our State parks for the continued enjoyment of visitors and local residents alike. Closure or underfunding of these parks would result in a significant negative economic impact on our County as tourism is one of our most important economic drivers.
 - b. **Protect our Communities from Forest Fires** – Continue to support measures to address forest fire prevention policies and programs in both private and public lands. Continue to seek funding for legislation that supports these goals. Support RCRC efforts to gain additional federal fire management resources. However, Mono County does not support the State Responsibility Area Fee (SRA) as it does not advance the efforts to protect rural communities from forest fires.
 - c. **Ensure full funding of Department of Fish and Wildlife Hatchery and Inland Fisheries Program (AB 7- 2006)** – In 2006, AB 7, dedicated by law 33 and 1/3% of all sport fishing licenses fees to be used for adequate stocking of Department of Fish and Wildlife Hatcheries. Beyond the funding dedication, AB 7 dictated the size of fish to be stocked. Recent DFW actions as well as state budget actions have reduced the size of the stocking fish and not fully directed the fee funding to this program. Mono County supports the original intent including all of the

funding being directed to the hatchery program and the fish size as described in the original legislation.

- d. **Support Bio-energy Action Plan** - Mono County supports the ongoing commitment of the California Energy Commission to the 2012 Bio-energy Action Plan, which has resulted in working groups such as the California Biomass Collaborative and legislation like SB 1122. We encourage the various state agencies involved to continue evolving this field of work to produce cleaner, more affordable technology based on sustainable and healthy forestry principles in a manner that benefits rural Sierra economies. In particular, Mono County has encouraged state agencies, such as the Sierra Nevada Conservancy (SNC) and California Energy Commission (CEC) to provide funding for project scoping and planning. Determining a suitable site with a biomass supply that is sustainably available and generating community support is critical to a project's success, but funding for these activities is currently limited. In 2015, a Feasibility grant was received by County from the SNC.

Mono County remains supportive of this efforts and support state funding for construction and ongoing maintenance of these facilities should they come online.

- e. **Support legislation that promotes, protects, or facilitates the sustainability of our local agriculture** - Mono County agriculture is an important local economic driver, provides jobs, and contributes to the open-space landscape that draws visitors. Reinstatement of Williamson Act subventions and continue to develop alternative funding measures, such as the Strategic Growth Council's Sustainable Agricultural Lands Conservation Program.

4. Public Safety and Criminal Justice

- a. **Encourage Efforts to Combat Illegal Trespass due to Marijuana Cultivation** - Instances of illegal trespass and violent crimes on both public and private lands place our residents, visitors, and law enforcement officers at risk. The County will advocate for solutions to stem illegal marijuana cultivation in all areas of the County by working with private property owners, the U.S. Forest Service, the Bureau of Land Management, the California State Board of Forestry and Fire Protection, the California Department of Parks and Recreation, and other regulatory entities to address this problem. The County also supports fines that cover the cost of site clean-up and restoration to mitigate for the impacts to the land, water quality and quantity.
- b. **State Realignment & Cost-Shifts** - Continue to ensure successful implementation of the broad array of programs transferred to county jurisdiction under the 2011 Public Safety Realignment. Including appropriate distribution of AB 109 funding.

Support state policy changes that will allow for greater administrative and program flexibility for County programs associated with this shift of responsibility.

- c. **Rural Fire Districts** - The population of Mono County is highly rural and dependent upon voluntary associations that provide basic emergency services. These volunteer fire districts provide services to residents, tourists, and are often the first responders to accidents. Support relief for rural fire districts.

5. Transportation and Infrastructure

- a. **Support legislation and budget action that provides additional and continuing funding for local road and county facility infrastructure.**

- i. **Support rehabilitation of the Bodie Road (Highway 270)** - Our County economy is based on tourism and one of the main attractions in the Bridgeport area is Bodie State Historical Park. Currently the unpaved section of State Highway 270 which connects the park to Highway 395 is in disrepair. The Board and staff have been collaborating with State Parks to advance the efforts to improve this section of the Bodie Road. Seek legislation/state budget funds to support state repair and ongoing maintenance of State Highway 270 to Bodie as well as ensure funding for this effort.

- ii. **Support Early Sierra Pass Openings** - Another main attraction for tourists in the Eastern Sierra is Yosemite National Park. It is vital for Mono County tourism that all trans-Sierra passes including Tioga Pass (State Route 120), Sonora (State Route 108) and Monitor (State Route 89) are open by Memorial Day, allowing spring holiday travelers access to the park from the eastside. In the past, ensuring timely snow removal has required collaboration between Caltrans, the County and in the case of Highway 120 the Yosemite National Park and the County. Each agency currently provides funding, equipment and personnel for various sections of the road. Seek legislation that ensures State and Park responsibility and timeliness for their sections of the road, allowing county funds to be used for County roads.

- b. **Support state resources for county compliance with California Air Resources Board (CARB) Emissions Standards** – In order to meet the CARB requirements for improving air quality in California, under current state law Mono County will need to replace most of our fleet of heavy duty diesel equipment. Current replacement schedules show this would be a significant cost to the County (estimated at \$16 million in 2014) by 2028. Support legislation extending the compliance deadline in rural counties for replacement of on-road and off-road

heavy duty diesel equipment. Support exemptions for rural counties that do not have air quality problems or the resources to meet regulatory requirements and encourages financial assistance from the State Air Resources Board to foster compliance.

6. Administrative and Fiscal Services

- a. **Support resources for improving county record keeping services and election administration and monitor legislation that may impact the following:**
 - i. 1) recording fees and process, and recorded documents;
 - ii. 2) vital statistic fees and process;
 - iii. 3) public records;
 - iv. 4) unfunded mandates;
 - v. 5) vote-by-mail, voter registration, election management systems, elections process, and election equipment.
- b. **Support Williamson Act Funding** - The State of California has eliminated funding for the Williamson Act (the California Land Conservation Act). Mono County, like most other rural counties, is dependent on State funding to offset the loss of property tax revenue to the County. This program has been hugely beneficial to our agricultural county. Support legislation and budget language that seeks full funding of the Williamson Act.
- c. **Support the full funding of all Payment in Lieu of Taxes (PILT)** - Support legislation and budget efforts that continue to maximize the PILT revenue from the federal and state government to counties and continues full funding of PILT without restrictions beyond the current authorization.

7. Health and Human Services

- a. **Ensure State and Federal Healthcare Reform has equitable funding formula for rural counties** - In 2014, Implementation of Affordable Care Act (ACA) began, it is vital that local government funding streams reflect equitable distribution formulas to service our rural constituents. Securing adequate funding to sustain health care reform measures is important to Mono County. Key issues include:
 - i. Medi-Cal expansion and funding for these mandates
 - ii. The 1991 Realignment allocation/amounts
- b. **Support the streamlining of the Medi-Cal administration and improve access to health coverage for uninsured families.**

- c. **Support greater federal and state resources for identifying and resolving cases of abuse and neglect of elder and dependent adults**, including financial abuse of this vulnerable population, and tracking the incidence of elder abuse and neglect in order to inform policy responses.

- d. **Support the establishment of a Foster Parent and Kinship Care Recruitment, Retention and Support fund to be administered through local child welfare services (CWS) agencies** and would be dedicated to the recruitment, retention and support of relative caregivers and licensed foster parents so that they may provide stable, loving homes for children in the foster care system.

- e. **Support the state and federal resources to increase statewide capacity in the Adult Protective Services (APS) program to protect and serve seniors and dependent adults who are victims of abuse and neglect.** Specifically providing additional resources for a statewide training system for APS staff, and supporting staffing in the California Department of Social Services to provide leadership and support to county APS programs).

Federal Priorities

1. **Support Funding/Program Preservation** – Support legislative, regulatory and budget efforts that protect and/or enhance local governments’ revenues, maximize the County’s access to federal funding sources, and/or increase local funding flexibility. Oppose legislative and administrative actions that would create federal unfunded mandates and/or preempt local decision making authority.
 - a. **Ensure Affordable Care Act (ACA) funding maintained for local governments** – Support the Prevention and Public Health Fund of the ACA, the nation’s first dedicated mandatory funding stream for public health and prevention activities, which support Mono County health care services to underserved residents.
 - b. **Support federal funding for Housing and Economic Development Programs** – support the highest possible funding level for key federal housing and economic development programs, including the Community Development Block Grant (CDBG).
 - c. **Support local efforts to develop alternative energy** sources including but not limited to environmentally appropriately scaled biomass, solar, wind and geothermal power generation while ensuring infrastructure does not degrade the County’s quality of life, diverse natural resources or essence and history.
 - d. **Support funding for Broadband Deployment through the funding of infrastructure projects and grant programs, allocation of resources to broadband planning, advisory, or support oriented organizations** - Mono County is a rural California county in which most of our communities and constituents lack access to high-speed Internet. Though improving in the region through the Digital 395 Project, Mono County communities and residents still face barriers to connectivity. Having access to federal funds is critical, as infrastructure projects in much of the area are typically cost prohibitive, and do not yield a significant enough return based on the small population.
 - i. Support legislation that provides funding for infrastructure projects and adoption/education efforts.
 - ii. Advocate for programs and efforts that move to improve the accuracy of metrics used to represent the current state of broadband in Mono County. Maintain an internal set of metrics based on best available information and knowledge.
 - e. **Support legislation that promotes, protects, or facilitates the sustainability of our local agricultural** - Mono County agriculture is an important local economic

driver, provides jobs, and contributes to the open-space landscape that draws visitors.

- f. **Support Economic Development Resources –**
 - i. **Ensure access to federal public lands that supports Mono County’s tourism** and ensure funding and management directives for federal land agencies that facilitate the planning, building and maintenance of infrastructure for sustainable recreation and travel on public lands.
 - ii. **Maintain and support access to small business capital for local business development through the Small Business Administration.**
 - iii. **Support economic development efforts that augment and promote business retention and expansion, as well as to create an environment conducive to new business attraction.**
 - iv. **Support the funding of efforts to bolster fishing and other recreational activities such as funding for the Lahonton Cutthroat Trout Recovery Program.**
 - v. **Support efforts to attract and encourage commercial filming opportunities to the region.**

- 2. **Natural Resources and Agriculture –** Support legislation that promotes agriculture and that protects the County’s quality of life, its diverse natural resources, and preserves the essence and history of the County.
 - a. **Support Forest Fuels Reduction and Management Efforts** - with 94% of Mono County publically owned, much of which is covered with high fuel loads, fuels reduction is a major concern for Mono County and its communities. Continue to seek funding for priority fuel reduction projects around Mono County communities and key tourist resources through local fire safe councils and public agencies.
 - b. **Support control and mitigation for the spread of invasive species to protect, conserve and restore public and private lands**
 - c. **Support Biomass Project Development –** Support legislation that encourages the US Forest Service (USFS) to continue actively promoting and assisting with biomass project development. For instance, the USDA biomass grant is critical to funding engineering and design for a somewhat high-risk venture, and is directly related to the USFS’s multiple-use mission which requires healthy forests.

3. **Endangered Species – Support a balanced approach of the implementation of endangered species regulation with impacts to the economy and communities of Mono County.** Mono County is fortunate to have a rich natural heritage which should be conserved, and supports the need to protect and recover imperiled species. At the same time, these conservation measures must be weighed and balanced against impacts to the fragile rural economy and local communities, and every effort must be made to protect private property rights and avoid detrimental impacts to County residents. The species below only include those known or anticipated to be listed, and any other listings that may arise should be analyzed carefully.

a. Monitor designation of critical habitat for the Yellow-Legged Frog and Yosemite Toad and minimize local impacts as the Recovery Plan is developed – Critical habitat designation is expected in early 2015; engage as necessary in the development of the USFWS recovery plan to ensure threats are accurately and realistically addressed while minimizing impacts to the economy and communities of Mono County.

b. **Continue working with Bi-State partners to prevent the need to list the Bi-State sage-grouse** Support continued participation by federal agencies in a collaborative process to address Bi-State Sage-Grouse listing and conservation efforts. A current USFWS listing proposal recommends over 82% of our small private land base to be included within critical habitat for the sage-grouse.

c. **Monitor Pacific Fisher listing process** – A proposal has been issued for the fisher, which does not currently occur in Mono County.

4. **Public Safety & Criminal Justice**

a. **Support full funding of Byrne Justice Assistance Grants** – Support the preservation of funding levels for existing safety programs such as the Byrne Justice Assistance Grant (Byrne/JAG) Program and oppose efforts to reduce or divert funding away from these programs.

5. **Transportation**

a. **Ensure federal transportation formulas support rural road infrastructure** - Mono County has concerns regarding the continued implementation of the federal surface transportation reauthorization program, known as the Moving Ahead for Progress in the 21st Century Act or MAP-21. Mono County relies on the network of state highways and locally maintained roads to link residents to essential services. Transportation funding formulas should provide funding protections or guarantees for California’s rural transportation system and reflect that rural counties lack viable means to fund larger projects that provide

statewide benefit. We should advocate for formulas that distribute federal funds to support local transportation priorities.

- b. **Support efforts to protect the Highway Trust Fund** and support programs that provide funding for local roads, bridges, and transit initiatives including pedestrian and bicycle systems.
- c. **Support the full funding of all Payment in Lieu of Taxes (PILT)** - Support legislation and budget efforts that continue to maximize the PILT revenue from the federal and state government to counties and continues full funding of PILT without restrictions beyond the current authorization.
- d. **Support full funding of the Secure Rural Schools program** – These funds are critical to Mono County in that they provide funding for both the Mono County Office of Education programs but also they support road maintenance to ensure students can get to and from school on County roads.

6. Health Reform

- a. **Oppose efforts to reduce federal funding for Medicaid administration or benefits.**
- b. **Adult and Disability Services**
 - i. Appropriate \$100 million authorized under the Elder Justice Act to support state and county adult protective services programs.
 - ii. Restore full funding for the Social Services Block Grant, which in California is used primarily to augment county and state funded in-home supportive services for elderly and disabled persons, and to coordinate services to children with disabilities.



Lundy Canyon

HIDDEN TREASURES IN PLAIN SIGHT

MONO COUNTY is a land of dramatic mountain backdrops, high plains, and countless clear lakes, streams, and rivers. Over 3,000 square miles in size, Mono County is well-known for its vast scenic and recreational resources. Much of this land is contained in the Inyo and Toiyabe National Forests, and the Ansel Adams, John Muir, and Hoover wilderness areas. Access to hiking, fishing, biking, skiing, horseback riding, fall colors, uncrowded campgrounds, amazing music festivals, and much more is found just off of scenic US Hwy. 395, which stretches the length of the county, 120 spectacular miles from Bishop, Calif., to the Nevada border.

TOP ATTRACTIONS

YOSEMITE NATIONAL PARK – Drive California’s highest pass – just 12 miles from Lee Vining to Yosemite’s east entrance – to witness ten-story waterfalls, enjoy world-class rock climbing and hiking, and more (summer only).
Contact: www.nps.gov/yose or 209-372-0200. For bus service: www.Yarts.com.

BODIE STATE HISTORIC PARK – Bodie is preserved in a state of “arrested-decay,” so keep an eye out for spirits roaming the once-wild streets of this genuine gold-mining ghost town.
Contact: www.parks.ca.gov or www.BodieFoundation.org or 760-647-6445.

MONO LAKE – Paddle a canoe around volcanic islands (don’t worry, they’re dormant!) and tufa towers, which are natural limestone formations created by the ancient lake’s salinity.
Learn more at Mono Basin Scenic Area Visitor Center, 760-647-3044, or the Mono Lake Committee, www.MonoLake.org or 760-647-6595.

DEVILS POSTPILE NATIONAL MONUMENT – Located near Mammoth Lakes, Devils Postpile is the world’s finest example of columnar basalt formations: 760-924-5500.

Mono County Tourism

Alicia Vennos

avennos@mono.ca.gov

1-800-845-7922

760-924-1743 Office

East River PR

Katie Shaffer

katie@eastriverpr.com

530-214-8790 Office

530-559-5330 Cell

MONO COUNTY Towns Communities

BENTON HOT SPRINGS — Soak in natural hot springs that are temperature regulated in this historic stagecoach station.

BRIDGEPORT — Home of the county seat, the classic whitewashed wooden courthouse has been in use since 1880. Just outside of Bridgeport, Twin Lakes, Virginia Lakes and Bridgeport Reservoir offer fishing and hiking all summer long.

CONVICT LAKE / MCGEE CREEK — Dramatically situated under towering Mt. Morrison, Convict Lake is loved by anglers, hikers, and wedding parties! Catch wildflowers or fall colors at McGee Creek Canyon.

CROWLEY LAKE — Fishing season opener’s home base, this expansive lake offers world-class trout fishing.

JUNE LAKE — Tucked away at the base of 10,909-ft Carson Peak, June Lake is a scenic mountain hideaway. Well known for trout fishing and brilliant fall colors, the June Lake Loop is a snowy retreat in winter. June Mountain Ski Area offers free lift tickets all winter for kids age 12 and under.

LEE VINING — Overlooking dramatic Mono Lake, Lee Vining is the gateway town to Yosemite National Park – just 12 breathtaking miles up Tioga Pass Road.

MAMMOTH LAKES — Mammoth Mountain Ski Area consistently ranks as one of the top winter sports destinations in North America. In the town of Mammoth Lakes, you’ll find quaint shops, gourmet restaurants and accommodations from cozy cabins to four-star luxury hotels.

ROCK CREEK / TOM’S PLACE — Famous for the beautiful Little Lakes Valley hiking trail, fall colors, and home-made pie.

TOPAZ — Home to Topaz Lake, which boasts a nine month fishing season (and big cash derby!), and a Nevada casino.

WALKER AND COLEVILLE — Ranch towns in the northern part of Mono County, Walker and Coleville host California’s only ATV/UTV Jamboree!

C.

GETTING TO CALIFORNIA'S EASTERN SIERRA

FLY TO THE EASTERN SIERRA!

Daily air service to Mammoth Yosemite Airport (MMH) is available on Alaska Airlines and/or United Airlines from Los Angeles, San Francisco, Orange County, and San Diego.



DRIVE

Mono County is within a scenic 5-7 hour drive from Los Angeles, San Francisco and Las Vegas. Northern Mono County is only 1.5 hours from Reno/Tahoe International Airport.

DRIVING DISTANCES AND TIMES

Reno	2.5 hours	140 miles / 225 km
San Francisco	5.5 hours	250 miles / 402 km
Los Angeles	5.5 hours	330 miles / 531 km
Sacramento	4 hours	220 miles / 354 km
Las Vegas	5.5 hours	340 miles / 547 km
Yosemite Valley	2 hours	75 miles / 121 km

All mileage and times are from Lee Vining, CA



Mono Lake

VISITOR AMENITIES

LODGING — With more than 140 hotels, motels, bed & breakfast inns, cabins and campgrounds, Mono County has a diverse lodging base—truly everything from deluxe spa hotels to rustic cottages and scenic RV parks.

DINING — All that fresh air and adventure will have visitors needing fuel. There are over 100 restaurants, cafes, pubs and bakeries to choose from throughout Mono County, with options ranging from traditional comfort food to delicious ethnic cuisine and fine dining.

SHOPPING — If you are looking for Macy's, you won't find it in Mono County. Our shopping experience is more about bait, gloves and woolly buggers! However, with approximately 125 stores to browse through, you'll find lots of intriguing shops, art galleries with Eastern Sierra-inspired visions, and Native American crafts and western wear that will bring out everyone's inner Wild West.

WINTER 2015 — Kids 12 and under ski and snowboard FREE all winter at June Mountain, no restrictions!

TOP EASTERN SIERRA ACTIVITIES

SUMMER

Hiking and Backpacking
Fishing and Camping
Mountain Biking and Road Cycling
Kayaking and Canoeing
Stand-up Paddleboarding
Rock Climbing
Horseback Riding
ATVs / Off-Highway Vehicles

WINTER

Skiing and Snowboarding
Cross Country Skiing
Snowshoeing
Snowmobiling
Dog-Sledding
Sledding and Tubing
Ice Skating
Ice Climbing

2015 EVENT HIGHLIGHTS

June Lake Winter Festival	June Lake	Feb 21-22
Mammoth Winter Biathlon	Mammoth Lakes	Mar 13-15
Eastern Sierra ATV/UTV Jamboree	Walker	June 16-20
Mono Basin Bird Chautauqua	Lee Vining	June 19-21
Mammoth Motocross	Mammoth Lakes	June 19-28
Old-Fashioned 4th of July	Bridgeport	July 2-5
June Lake Triathlon	June Lake	July 11
Mammoth Lakes Jazz Jubilee	Mammoth Lakes	July 17-19
Mammoth Festival of Beers & Bluesapalooza	Mammoth Lakes	July 30 – Aug 2
Friends of Bodie Day	Bodie	Aug 8
Ghosts of the Sagebrush Tour	Lee Vining	Aug 28-29
Founder's Day	Bridgeport	Sept 4-7
Autumn Beer Festival	June Lake	Oct 10

For the latest news, events info, FREE Visitor Guide, and Mono County Travel Blog – visit us online at www.MonoCounty.org and on Facebook at www.Facebook.com/VisitEasternSierra.

Elected State Representatives:

Assembly member Frank Bigelow 5 th Assembly District State Capitol, Suite #4116 Sacramento, CA 94249-0005 Phone: (916) 319-2005 Fax: (916) 319-2105 Website: http://arc.asm.ca.gov/	Senator Tom Berryhill 14 th Senate District State Capitol, Room 3076 Sacramento, CA 95814 Phone: (916) 651-4014 Fax: (916) 651-4914 Website: http://district14.cssrc.us/
Governor Jerry Brown c/o State Capitol, Suite 1173 Sacramento, CA 95814 Phone: (916) 445-2841 Fax: (916) 558-3160 Website: http://gov.ca.gov/	

Elected Congressional Representatives:

Senator Barbara Boxer United States Senate 112 Hart Senate Office Building Washington, D.C. 20510 Phone: (202) 224-3553 Fax: (202) 224-0454 Website: http://www.boxer.senate.gov/	Senator Dianne Feinstein United States Senate 331 Hart Senate Office Building Washington, D.C. 20510 Phone: (202) 224-3841 Fax: (202) 228-3954 Website: http://www.feinstein.senate.gov/
Congressman Paul Cook 8 th Congressional District 1222 Longworth House Office Building Washington, DC 20515 Phone: (202) 225-5861 Fax: (909) 797-4997 Website: http://cook.house.gov/	