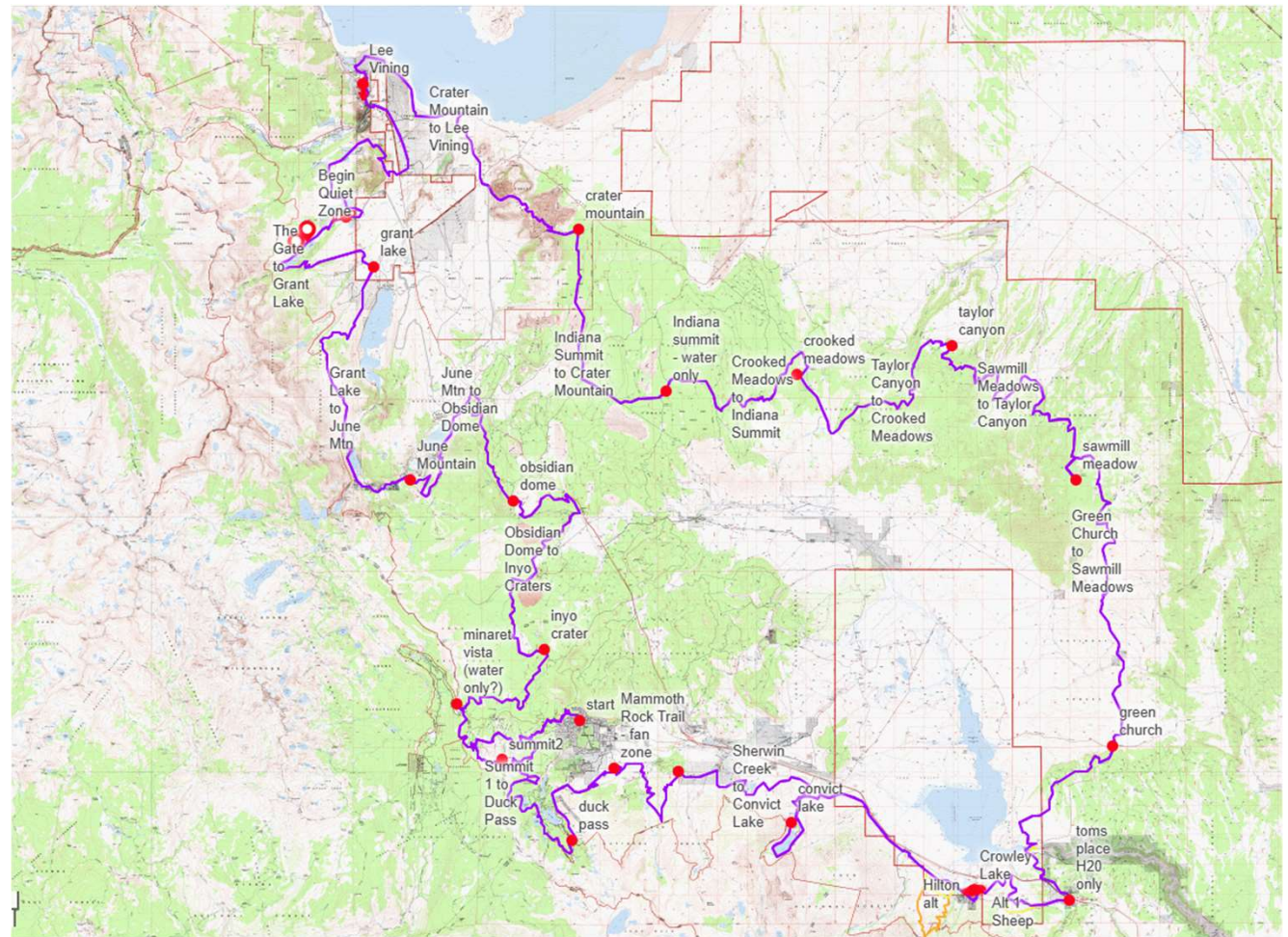


SPECIAL EVENT  
PERMIT  
APPLICATION:  
theMAMMOTH



## EVENT DETAILS:

- 9/26/25-9/30/25
- 214-mile running race
- 500+ attendees expected
- 18 aid stations
- 24-hour event operations
- Proposed overnight use of Lee Vining and Crowley Lake Community Centers



# the mammoth

Aid Station	Distance Between AS	Total Distance	Clock Time (First Runner ETA)	AS Cutoff Time	Crew Access Y/N	Pick up/ Drop Off Pacers	Drop Bags	# of Crew Vehicles Allowed
Village Start	0 miles	0	8 AM Fri	have fun	Y	N	Y	ALL
01_Summit1	9.2 miles	9.2 miles	9:45 AM Fri	1:30 PM Fri	N	N	Y	No gondi access ( could hike up)
02_Duck Pass	8.9 miles	18.1 miles	11:30 AM Fri	5 PM Fri	N	N	Y	0
03_Sherwin Creek	13.9 miles	32 miles	2 PM Fri	11 PM Fri	Y	N	Y	1
04_Convict Lake	8.5 miles	40.5 miles	3:30 PM Fri	3:30 AM Sat	Y	N	Y	2
06_Crowley Lake	13 miles	<b>53.5 miles</b>	6 PM Fri	10 AM Sat	Y	Y	Y	2
07_Tom's Place	6.1 miles	59.6 miles	7:30 PM Fri	n/a	water only	N	N	0
08_Green Church	10 miles	69.6 miles	9:15 PM Fri	4:30 PM Sat	Y	Y	Y	1
09_Sawmill Meadow	14.5 miles	<b>84.1 miles</b>	12:30 AM Sat	12 AM Sun	<b>N</b>	<b>N</b>	Y	1
10_Taylor Canyon	14 miles	98.1 miles	3:30 AM Sat	7 AM Sun	Y	Y	Y	1
11_Crooked Meadows	10 miles	<b>108.1 miles</b>	5:30 AM Sat	1 PM Sun	Y	Y	Y	1
12_Indiana Summit	8.7 miles	116.8 miles	7:00 AM Sat	n/a	water only	N	N	0
13_Crater Mtn	8.6 miles	125.4 miles	8:30 AM Sat	10 PM Sun	Y	Y	Y	1
14_Lee Vining	15.23 miles	<b>140.6 miles</b>	11:30 AM Sat	5:30 AM Mon	Y	Y	Y	2
15_The Gate	12 miles	152.63 miles	n/a	n/a	water only	N	N	0
16_Grant Lake	7.3 miles	159.93 miles	3:00 PM Sat	2 PM Mon	Y	Y	Y	1
17_June Mtn	11.84 miles	<b>171.77 miles</b>	6:30 PM Sat	9 PM Mon	Y	Y	Y	2
18_Obsidian Dome	11.5 miles	183.27 miles	9:00 PM Sat	4 AM Tue	Y	Y	Y	1
19_Inyo Crater	12.43 miles	195.7 miles	11:30 PM Sat	11:30 AM Tue	Y	Y	Y	1
20_Minaret Vista	6.35 miles	202.05 miles	1:30 AM Sun	3 PM Tue	Y	Y	Y	1
21_Summit2	5.69 miles	207.74 miles	3:15 AM Sun	7:00 PM Tue	N	N	Y	No gondi access
Village at Mammoth	6.93 miles	214.6 miles	4:30 am Su	10 PM Tue	Y	n/a	Y	ALL
		214.6	<b>47 Hours</b>	<b>110 HOURS</b>				
Sleep Station	elevation: 30,664			Hours (cutoff)				

## MONO COUNTY CODE SECTION 5.50.050

**H. . . .** Except as set forth in subsection I below, special events must not operate between the hours of ten p.m. and seven a.m.

**I. . . .** Notwithstanding any other provision of the Mono County Code, the board of supervisors may, by resolution, grant an exemption to authorize a special event, including those expected to otherwise create nuisance conditions, to be conducted later than ten p.m. and/or earlier than seven a.m.



## ELEMENTS OF PROPOSAL REQUIRING BOARD APPROVAL

- 24-hour event operation
- Overnight use of Crowley Lake Community Center (12:00 p.m. on Friday, September 26 through 2:00 p.m. on Saturday, September 27) as an aid station for event participants
- Overnight use of the Lee Vining Community Center (12:00 p.m. on Saturday, September 27 through 6:00 a.m. on Monday, September 29) as an aid station for event participants

## CONCERNS AND RESPONSES

- Long Valley Dam closure
- Sheepdogs
- Private land
- Potential neighborhood impacts
- Potential environmental impacts
- Emergency Plan
- CEQA



## PUBLIC OUTREACH

### **Outreach Process**

1. RPAC email lists
2. Supervisor engagement/word of mouth
3. Applicant-driven
4. Public Hearing

### **Comment Letters Received**

1. CSA #1 (**Supportive**)
2. Mike McMahon, MS, MHA, ATC, CMPE  
Orthopedic Clinic & Program Manager  
Mammoth Hospital (**Supportive**)
3. Mammoth Lakes Tourism (**Supportive**)



## RECOMMENDATION

1. Find that the project qualifies as a Categorical Exemption under CEQA Guidelines §§15301 and 15304 and instruct staff to file a Notice of Exemption.
2. Consider and adopt proposed resolution authorizing operating hours of 5:00 a.m. on September 26, 2025, to 8:30 p.m. on September 30, 2025, with overnight use of the Crowley Lake Community Center from 12:00 p.m. on September 26, 2025 through 2:00 p.m. on September 27, 2025, and overnight use of the Lee Vining Community Center from 12:00 p.m. on September 27, 2025 through 6:00 a.m. on September 29, 2025, for the 2025 theMAMMOTH special event.
3. Provide any desired direction to staff.





# the mammoth



- 214 mile loop
- elite competitive field
- professional 3 day live broadcast with global reach

# the mammoth

the mammoth								
Aid Station	Distance Between AS	Total Distance	Clock Time (First Runner ETA)	AS Cutoff Time	Crew Access Y/N	Pick up/ Drop Off Pacers	Drop Bags	# of Crew Vehicles Allowed
Village Start	0 miles	0	8 AM Fri	have fun	Y	N	Y	ALL
01_Summit1	9.2 miles	9.2 miles	9:45 AM Fri	1:30 PM Fri	N	N	Y	No gondi access ( could hike up)
02_Duck Pass	8.9 miles	18.1 miles	11:30 AM Fri	5 PM Fri	N	N	Y	0
03_Sherwin Creek	13.9 miles	32 miles	2 PM Fri	11 PM Sat	Y	N	Y	1
04_Convict Lake	8.5 miles	40.5 miles	3:30 PM Fri	3:30 AM Sat	Y	N	Y	2
06_Crowley Lake	13 miles	53.5 miles	6 PM Fri	10 AM Sat	Y	Y	Y	2
07_Tom's Place	6.1 miles	59.6 miles	7:30 PM Fri	n/a	water only	N	N	0
08_Green Church	10 miles	69.6 miles	9:15 PM Fri	4:30 PM Sat	Y	Y	Y	1
09_Sawmill Meadow	14.5 miles	84.1 miles	12:30 AM Sat	12 AM Sun	N	N	Y	1
10_Taylor Canyon	14 miles	98.1 miles	3:30 AM Sat	7 AM Sun	Y	Y	Y	1
11_Crooked Meadows	10 miles	108.1 miles	5:30 AM Sat	1 PM Sun	Y	Y	Y	1
12_Indiana Summit	8.7 miles	116.8 miles	7:00 AM Sat	n/a	water only	N	N	0
13_Crater Mtn	8.6 miles	125.4 miles	8:30 AM Sat	10 PM Sun	Y	Y	Y	1
14_Lee Vining	15.23 miles	140.6 miles	11:30 AM Sat	5:30 AM Mon	Y	Y	Y	2
15_The Gate	12 miles	152.63 miles	n/a	n/a	water only	N	N	0
16_Grant Lake	7.3 miles	159.93 miles	3:00 PM Sat	2 PM Mon	Y	Y	Y	1
17_June Mtn	11.84 miles	171.77 miles	6:30 PM Sat	9 PM Mon	Y	Y	Y	2
18_Obsidian Dome	11.5 miles	183.27 miles	9:00 PM Sat	4 AM Tue	Y	Y	Y	1
19_Inyo Crater	12.43 miles	195.7 miles	11:30 PM Sat	11:30 AM Tue	Y	Y	Y	1
20_Minaret Vista	6.35 miles	202.05 miles	1:30 AM Sun	3 PM Tue	Y	Y	Y	1
21_Summit2	5.69 miles	207.74 miles	3:15 AM Sun	7:00 PM Tue	N	N	Y	No gondi access
Village at Mammoth	6.93 miles	214.6 miles	4:30 am Su	10 PM Tue	Y	n/a	Y	ALL
		214.6	47 Hours	110 HOURS				
Sleep Station	elevation: 30,664			Hours (cutoff)				



# **the mammoth**

**Community awareness campaign — what we are doing**

**Sheepdog mitigation and runner awareness**

**LADWP Dam construction update**

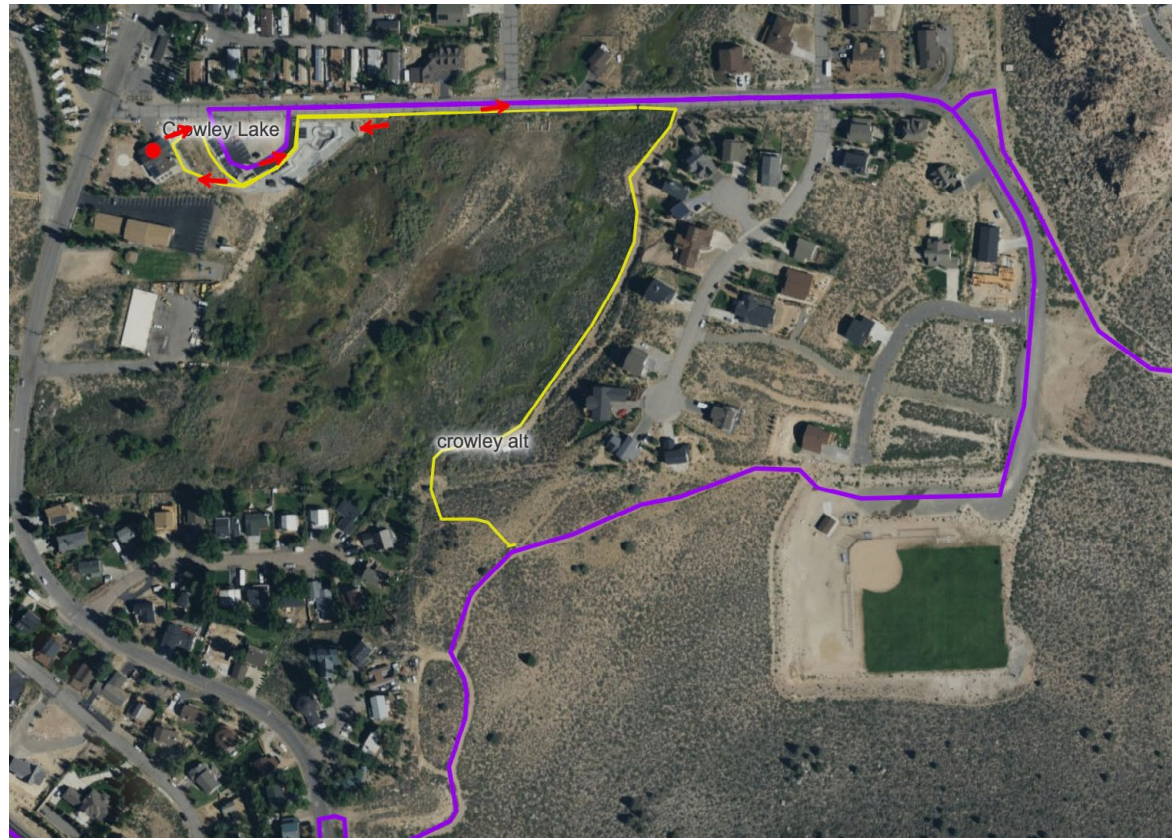
**Community impact in Crowley Lake and Lee Vining**

- 130 runners in the MAMMOTH
- The aid station in Crowley Lake is open for 16 hours, which is an average of 8 runners per hour
- Runners spread out over this distance significantly, and the aid station at Lee Vining, which is open for 42 hours, will see an average of 3 runners per hour
- Quiet hours are enforced in all residential neighborhoods from 9pm to 7am

# the mammoth

## Crowley Lake -- 53.5 miles

Aid station will be at the Crowley Lake community center. Purple line indicates current route for traffic in and out of staging area. Yellow line is the proposed alternate route utilizing the dirt road instead of running through the neighborhood.



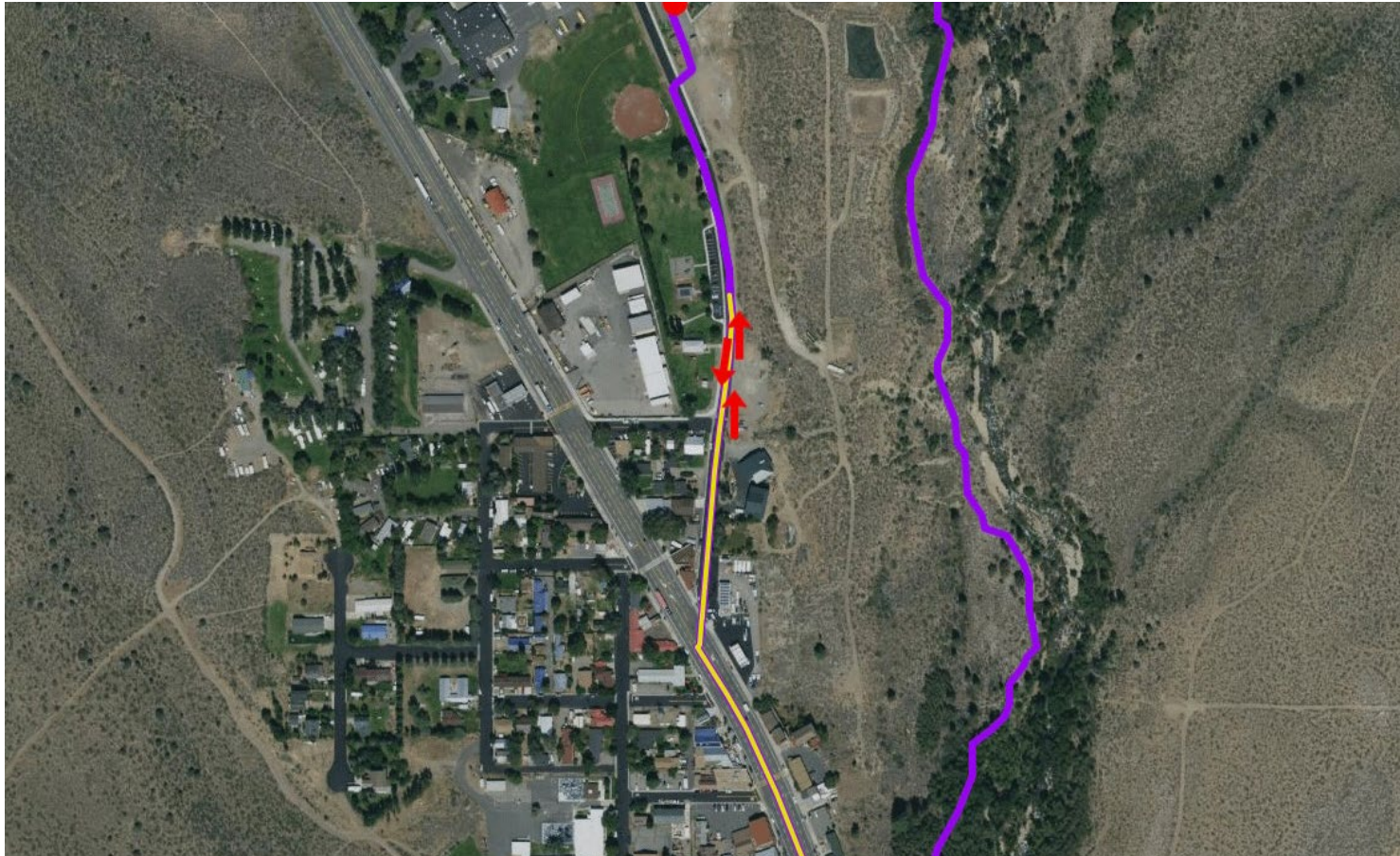


# the mammoth

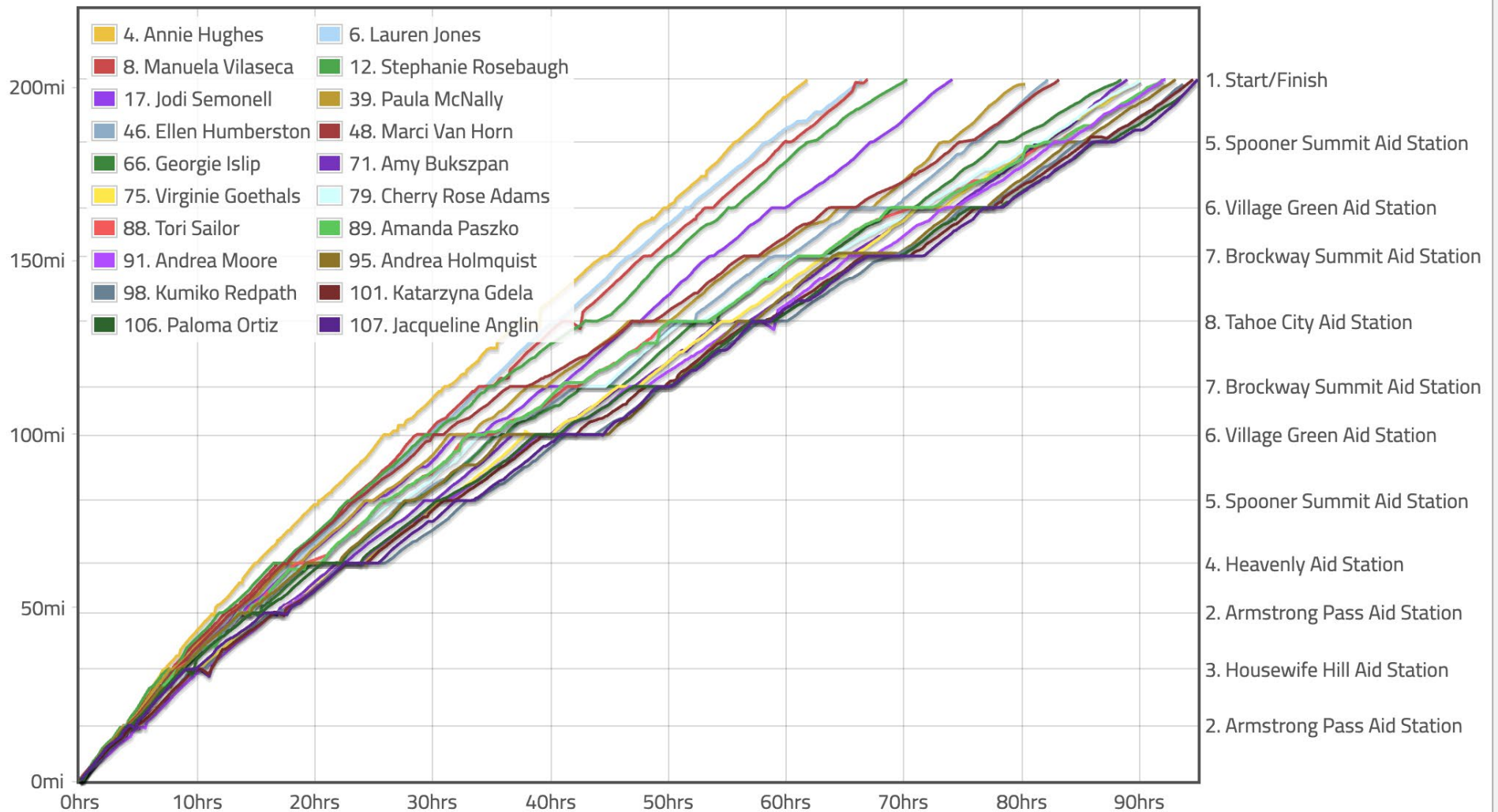
[theMammoth Google Earth Project LINK](#)

## Lee Vining, 140.4 miles

Aid station will be at the Lee Vining community center, in partnership with Lee Vining tourism. Purple line indicates current route for traffic in and out of the city limits.



# CASE STUDY - RUNNER FIELD SPREAD FOR TOP 20 WOMEN AT TAHOE 200 2025



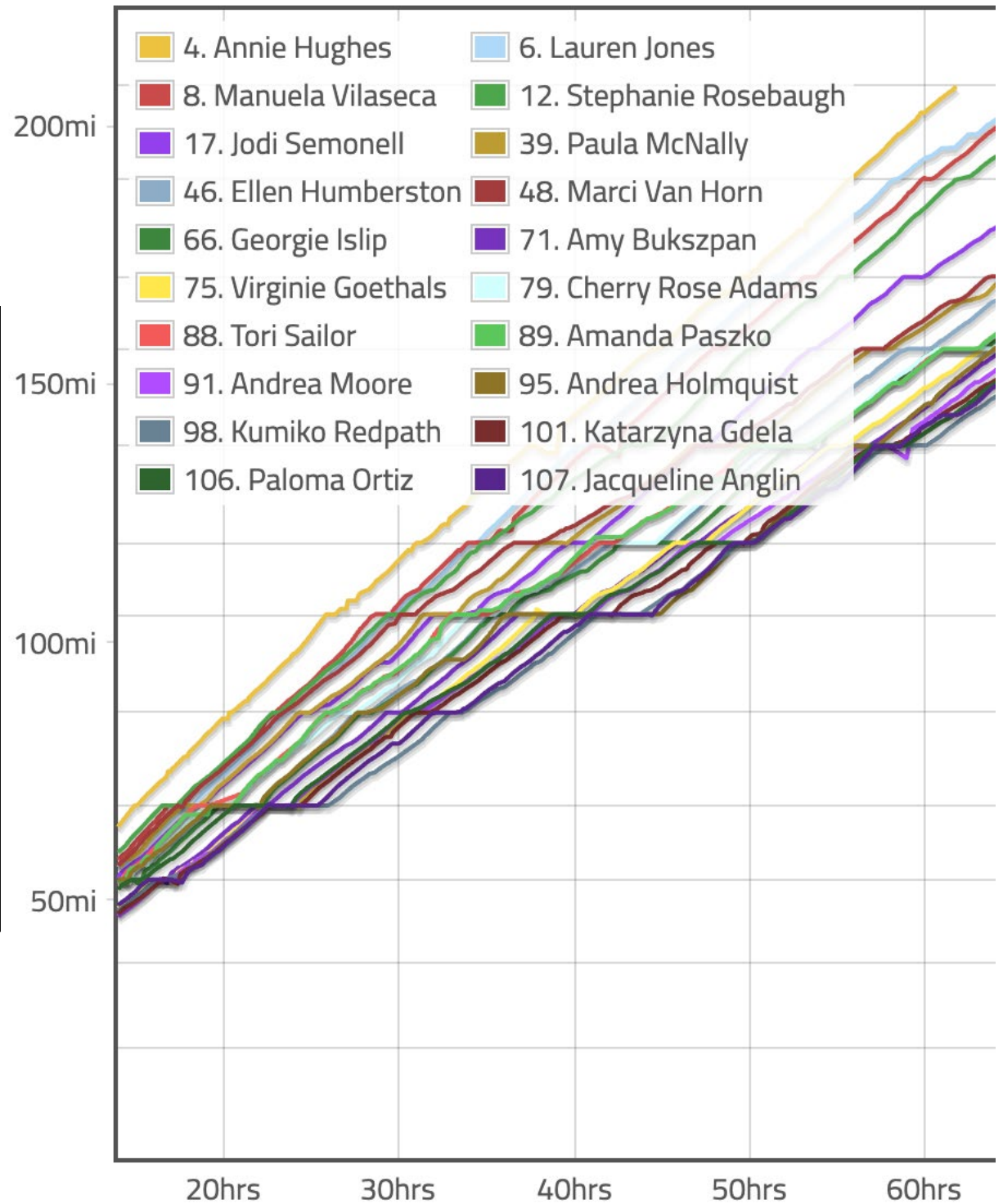


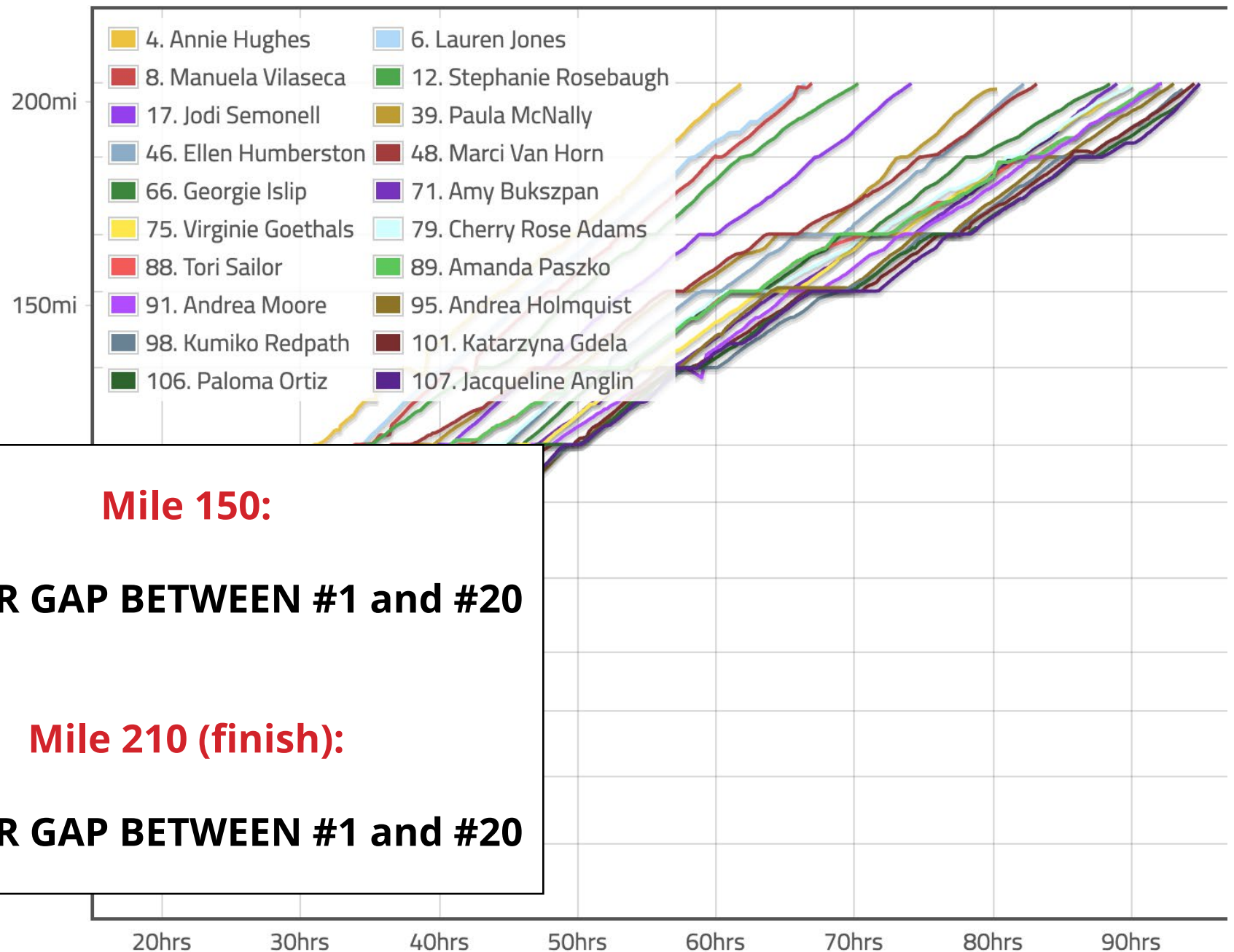
**Mile 50:**

**7 HOUR GAP BETWEEN #1  
and #20 FEMALE**

**Mile 100:**

**18 HOUR GAP BETWEEN #1  
and #20**





**Mile 150:**

**27 HOUR GAP BETWEEN #1 and #20**

**Mile 210 (finish):**

**32 HOUR GAP BETWEEN #1 and #20**

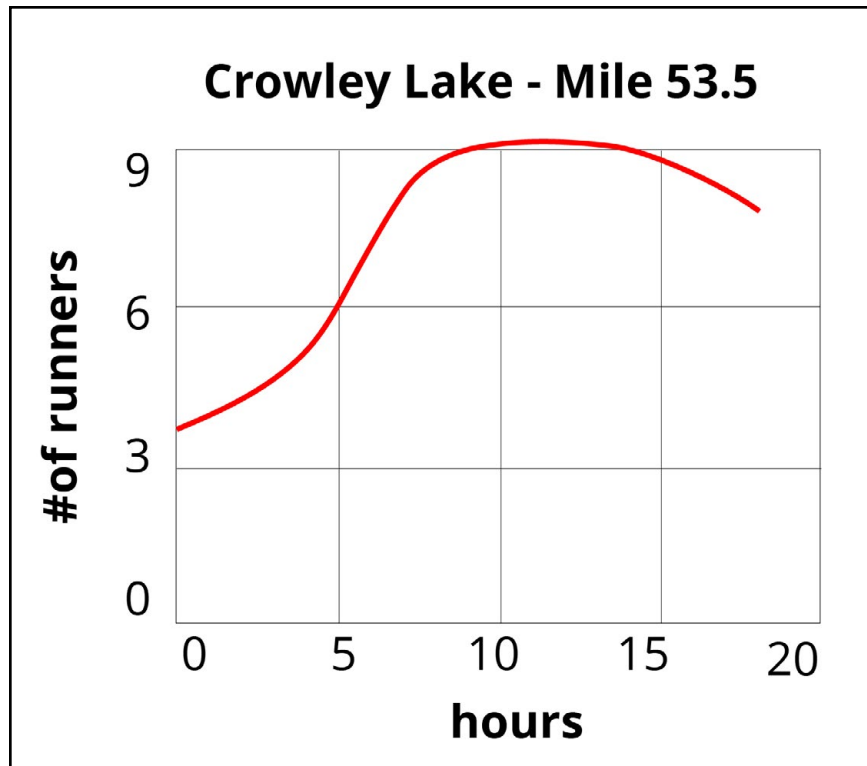
Category: Women

Refresh

# AVERAGE FINISHER RATE IN A 200 MILE RACE

60-65% finish rate

## THEMAMMOTH: 130 RUNNERS

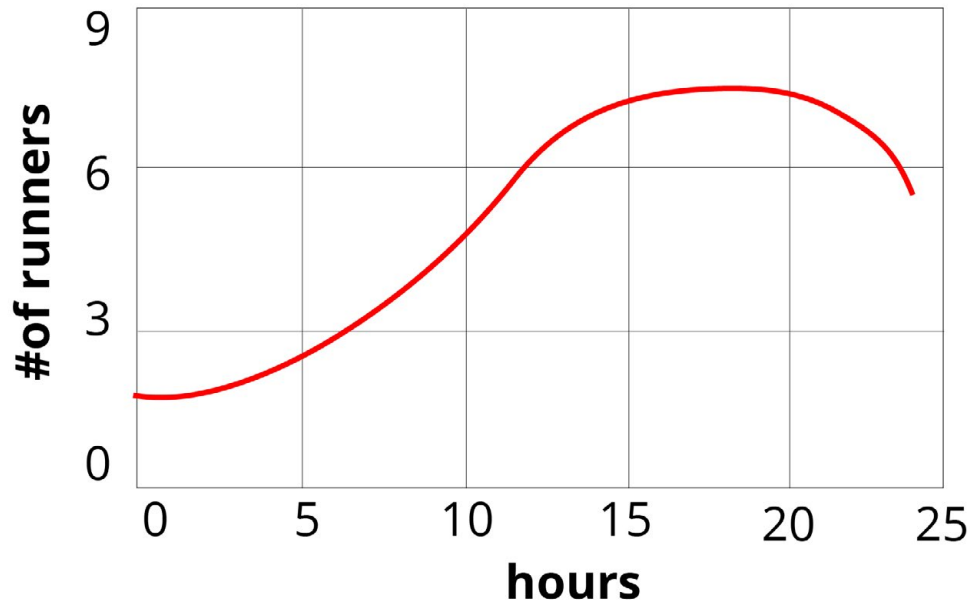


**Mile 53.5**

**Average: 8 runners per /hr**

**16 hour spread between  
1st and last**

### Sawmill Meadow - Mile 84

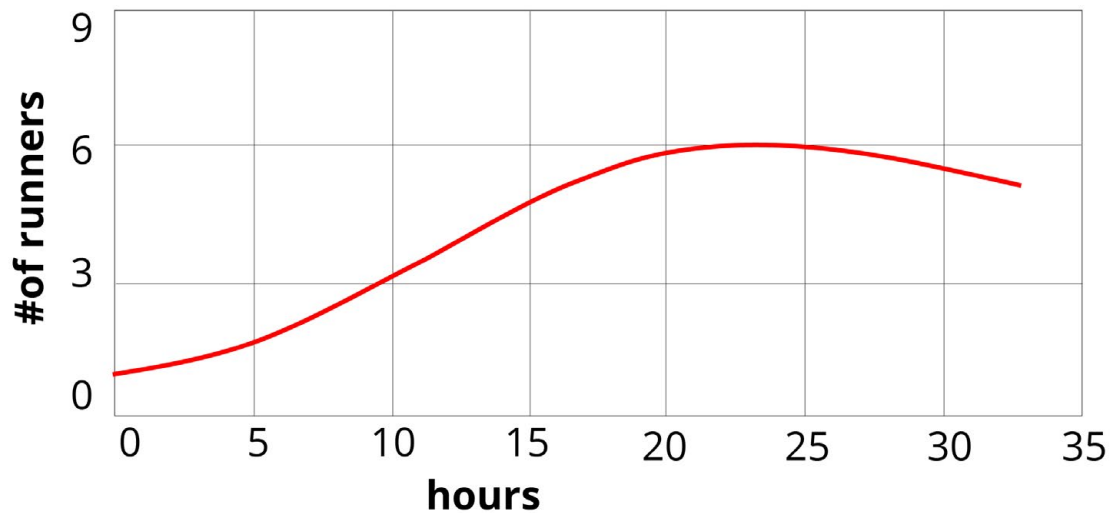


**Mile 84**

**Average: 5.5 runners per /hr**

**23.5 hour spread between  
1st and last**

### Crooked Meadows - Mile 108

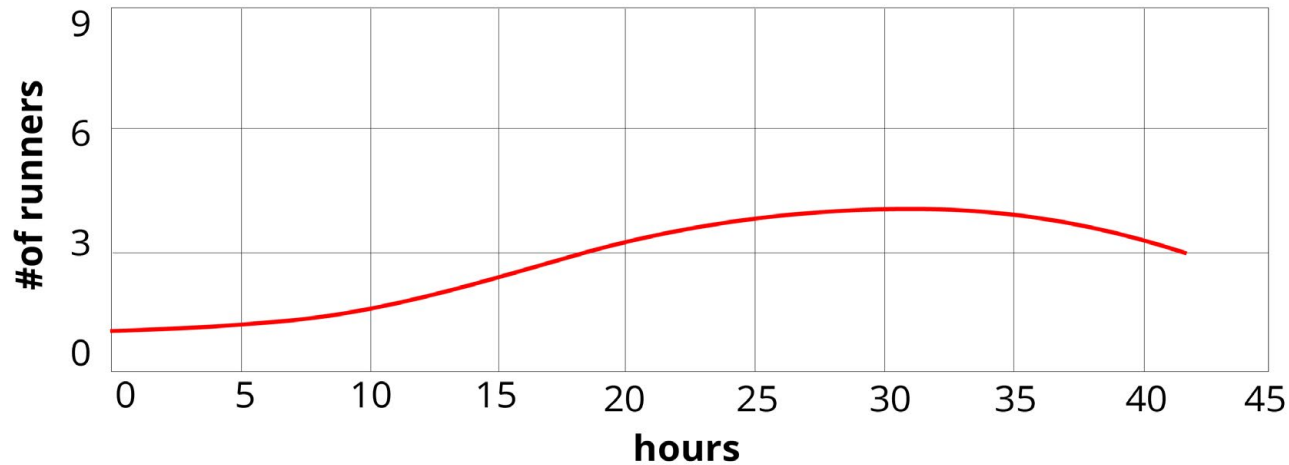


**Mile 108**

**Average: 4 runners per /hr**

**32.5 hour spread between  
1st and last**

**Lee Vining - Mile 140**

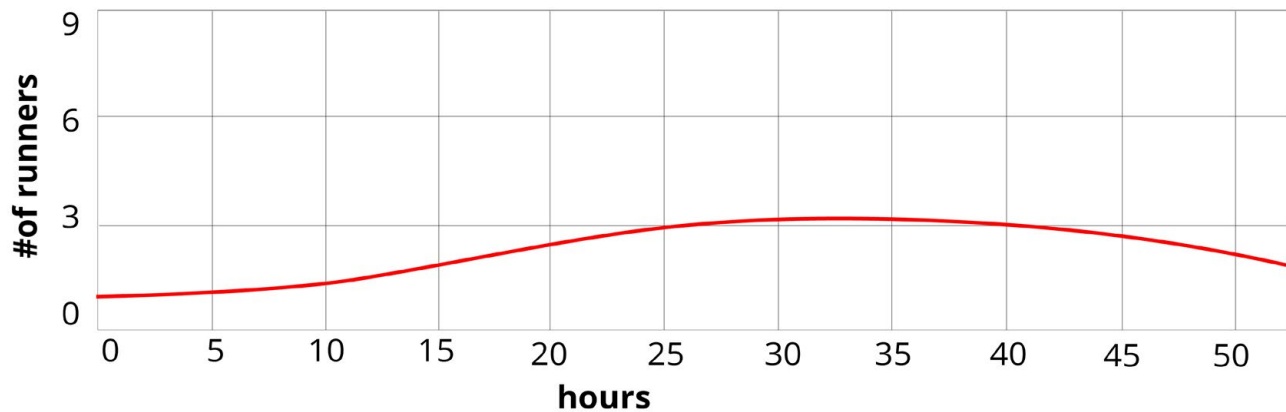


**Mile 140**

**Average: 3 runners  
per /hr**

**42 hour spread  
between  
1st and last**

**June Mtn - Mile 172**



**Mile 172**

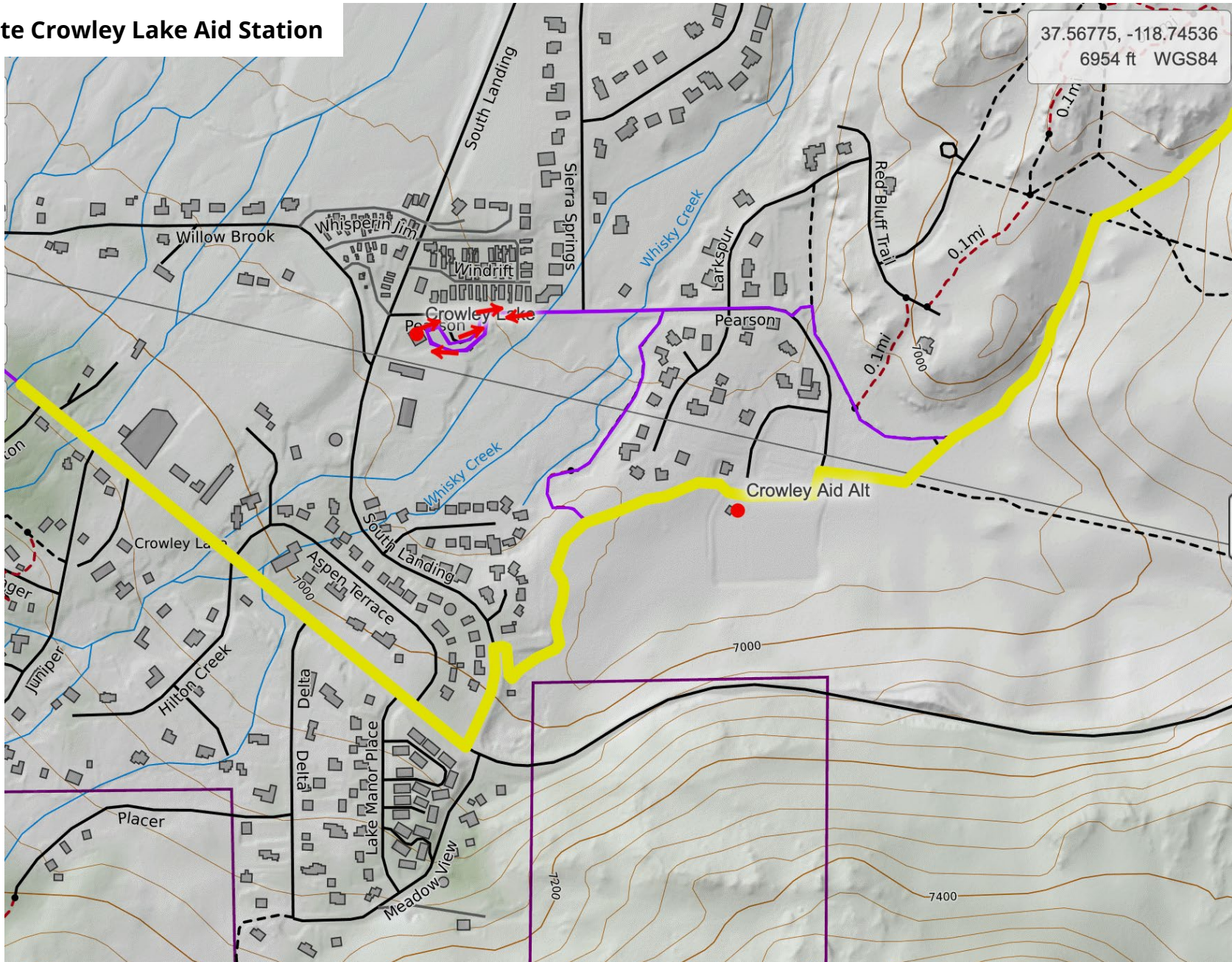
**Average: 2.8 runners  
per /hr**

**50.5 hour spread  
between  
1st and last**



# the mammoth

Alternate Crowley Lake Aid Station





# the mammoth

## Alternate Lee Vining Aid Station

