

*Item available for public inspection in the Clerk's office during regular business hours (Monday - Friday, 9 AM - 5 PM)*

# **August 20, 2024**

## **Regular Meeting**

**Department Update by  
Bri Chappell-McGovern**

# NeighborFEST

## Map Your Resilientville Bridgeport Indian Colony

### Resources

- Food:**
- Water:**
- Shelter:**
- Medical:**
- Evacuation:**  
- Zone E017
- Power/Fuel:**  
- SCE Circuit: Strosnider
- Communications:**



### Services

- Families:**
- Seniors:**
- Children:**
- Access & Functional Needs:**
- Pets:**
- Civic Networks/Associations:**

**Names:**

**Goal:** To identify resources, facilities, physical locations, and civic networks that will support the development of a resilient action plan/HUB. Be sure to take into consideration all of the residents including families, seniors, those with access and functional needs, and pets.

Maxar, Microsoft, Esri Community Maps Contributors, Mono County, California State Parks, © OpenStreetMap, Microsoft, Esri, HERE, Garmin, SafeGraph, GeoTechnologies, Inc., METI/USGS, USGS, Bureau of Land Management, EPA, NPS, US Census Bureau, USDA, Maxar

# NeighborFEST

## Map Your Resilientville

## The Trails

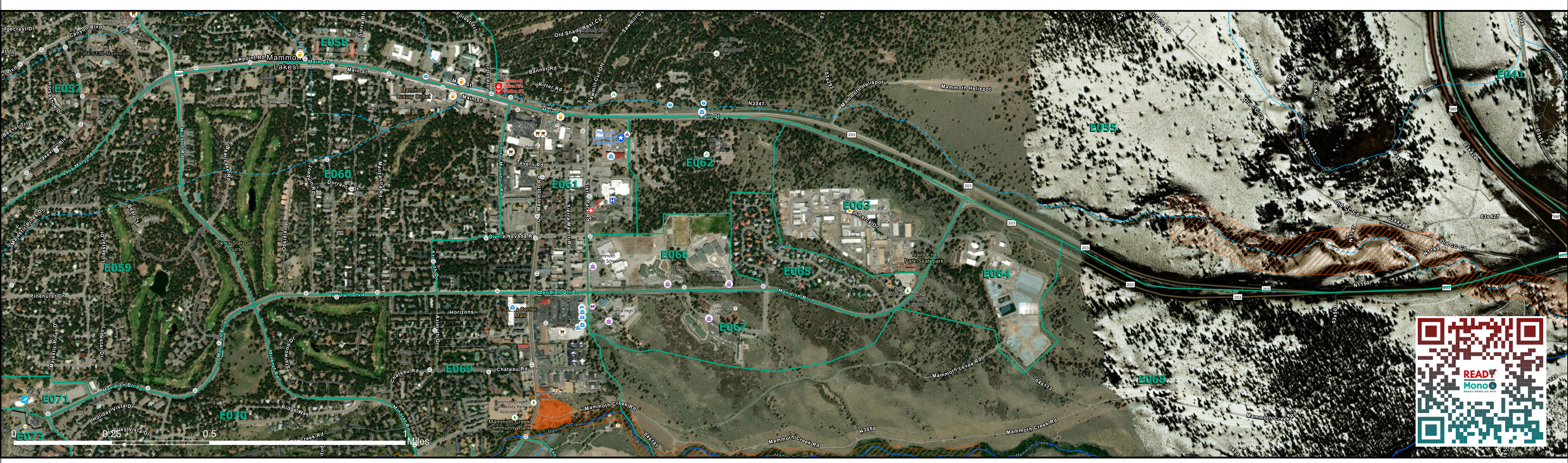
### Resources

- Food:
- Water:
- Shelter:
- Medical:
- Evacuation:  
- Zone E065
- Power/Fuel:  
- SCE Circuit: Sitzmark
- Communications:



### Services

- Families:
- Seniors:
- Children:
- Access & Functional Needs:
- Pets:
- Civic Networks/Associations:



Names:

**Goal:** To identify resources, facilities, physical locations, and civic networks that will support the development of a resilient action plan/HUB. Be sure to take into consideration all of the residents including families, seniors, those with access and functional needs, and pets.

Mapbox, Microsoft, Esri Community Maps Contributors, Mono County, California State Parks, © OpenStreetMap, Microsoft, Esri, HERE, Garmin, SafeGraph, GeoTechnologies, Inc., METUNASA, USGS, Bureau of Land Management, EPA, NPS, US Census Bureau, USDA, Maxar

# NeighborFEST

## Map Your Resilientville

### Mono City

### Resources

- Food:
- Water:
- Shelter:
- Medical:
- Evacuation:
  - Zone E022 - Conway Ranch Subdivision
  - Zone E024 - Mono City
- Power/Fuel:
  - SCE Circuits: Conway; Tufa
  - SCE Mill Creek Powerhouse
- Communications:



### Services

- Families:
- Seniors:
- Children:
- Access & Functional Needs:
- Pets:
- Civic Networks/Associations:

Names:

**Goal: To identify resources, facilities, physical locations, and civic networks that will support the development of a resilient action plan/HUB. Be sure to take into consideration all of the residents including families, seniors, those with access and functional needs, and pets.**

Eri Community Maps Contributors, Mono County, California State Parks, Esri, TomTom, Garmin, SafeGraph, GeoTechnologies, Inc, METI/NASA, USGS, Bureau of Land Management, EPA, NPS, US Census Bureau, USDA, USFWS, Maxar, Microsoft, Esri Community Maps Contributors, Mono County, California State Parks, © OpenStreetMap, Microsoft, Esri, TomTom, Garmin, SafeGraph, GeoTechnologies, Inc, METI/NASA, USGS, Bureau of Land Management, EPA, NPS, US Census Bureau, USDA, USFWS, Maxar





**MONO CITY  
FIRE DISTRICT**

**3801**

—9-1-1 NEVER FORGET  
**EMERGENCY**  
CALL  
FIRE  
POLICE  
MEDICAL

Geographic Expedition  
Joe Bellino

Map on a table with a legend:

- Funds:
- Water:
- Shelter:
- Medical:
- Evacuation:
  - Zone E202 - Canyon Beach
  - Substation
  - Zone E224 - Mono City
- Power/Fuel:
  - SEE Canyon Community
  - SEE Mill Creek Powerhouse
- Communications:
  - SEE

Mapbox  
Pen  
Pencils

