

Item available for public inspection in the Clerk's office during regular business hours (Monday - Friday, 9 AM - 5 PM)

July 2, 2024

Regular Meeting

**Item #7b. -
Updated
Presentation**



Prescribed Fire: Increasing Pace and Scale

MONO COUNTY PRESCRIBED FIRE AND FUELS REVIEW AND FUTURE PLANS

INYO NATIONAL FOREST AND
BLM BISHOP FIELD OFFICE

Prescribed Fire is one of the most effective tools we have to restore ecosystem function and resilience.

The implementation of Prescribed Fire projects are very serious endeavors that are not taken lightly by any one involved. At the same time, it is one of the most satisfying for all participants when implemented correctly.

Agenda:

- ▶ Recent History of Wildland Fire in Mono County
- ▶ Prescribed Fire: Planning to Implementation
- ▶ Prescribed Fire: Past Accomplishments
- ▶ Prescribed Fire: Planned Fall 2024 and Spring 2025
- ▶ Vision for the Future:
 - ▶ Eastern Sierra Fire Restoration and Maintenance Project
 - ▶ Eastern Sierra Climate and Communities Resilience Project

Calfire: Fire History Map

Work | escrp - Search | Dashboard 2022 | Eastern Sierra | FRAP dtdat fire history - Search | Untitled map

https://calfire-forestry.maps.arcgis.com/apps/mapviewer/index.html?layers=e3802d2abf8741a187e73a9db49d68fe

Untitled map | Open in Map Viewer Classic | Sign In

Layers

- California Fire Perimeters
- California Fire Perimeters (All)
- Recent Large Fire Perimeters (≥5000 acres)
- California Fire Perimeters (1950+)

Add

California Fire Perimeters

Properties

Information

Symbology

California Fire Perimeters

California Fire Perimeters (All)

Recent Large Fire Perimeters (≥5000 acres)

YEAR_

- 2019
- 2020
- 2021
- 2022
- 2023

California Fire Perimeters (1950+)

YEAR_

- 1950 - 1959
- 1960 - 1969
- 1970 - 1979
- 1980 - 1989
- 1990 - 1999
- 2000 - 2009
- 2010 - 2019
- 2020 - 2023

Esri, CGIAR, USGS | Mono County, California State Parks, Esri, TomTom, Garmin, SafeGraph, FAO, METI/NASA, USGS, Bureau of Land Management, EPA, NPS, USFWS | ... Powered by Esri

Caltopo.com: Fire History Map

Work | escrcp - Search | Dashboard 2022 | Eastern Sierra | FRAP dtat fire history - Search | Untitled map | CalTopo - Backcountry Mapping

https://caltopo.com/map.html#ll=37.81901,-118.98331&z=11&b=mbt&o=n&n=1&a=fire_recent%2Cmodis_mp

CALTOPO Help Enter coordinates or a location name Settings Close Sign Up Log In

37°51'23", -119°02'37"
37°51'23", -119°02'37"
7236 ft WGS84

Map Layers Ctrl-L

Base Layers

- MapBuilder Topo
- NAIP @ 100%
- 2013-2015

+ Stack Base Layer

Map Sheets

- + Stack Map Sheet

Map Overlays

- Contours
- MapBuilder Overlay
- Slope Angle Shading
- Geology
- Public Lands
- Parcel Data Pro
- Structures
- Motor Vehicle MVUM
- Recreation
- Fire History 2000-Present
- Fire Activity MODIS+VIIRS
- Sun Exposure
- Cell Coverage

Forecasts

- Weather Shading
- Wind Plot
- Avalanche

Realtime Data

- Weather Stations Pro
- Aircraft Pro

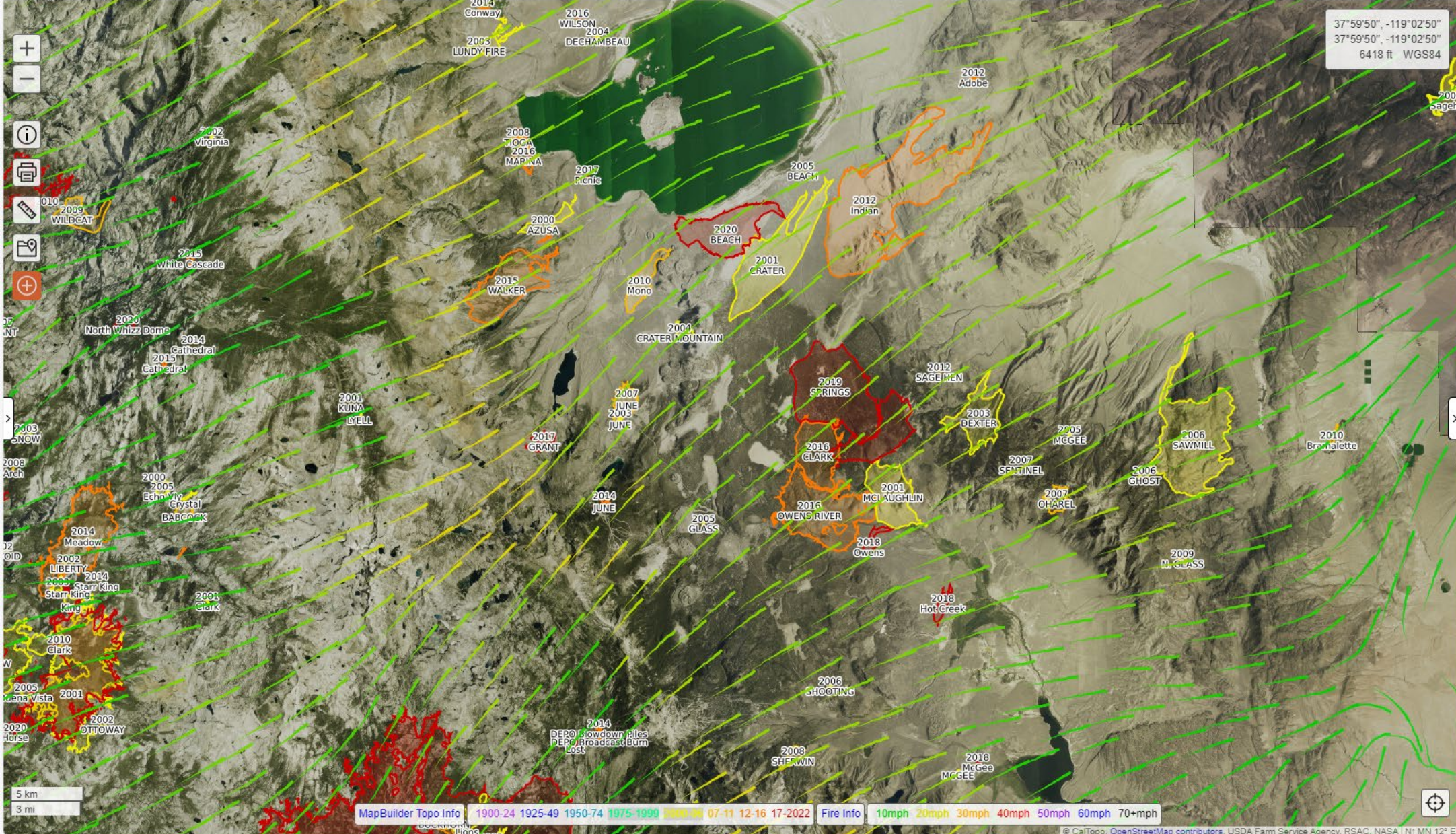
Shared Data

- MapBuilder Features
- Shared CalTopo Maps

5 km
3 mi

MapBuilder Topo Info 1900-24 1925-49 1950-74 1975-1999 2000-04 07-11 12-16 17-2022 Fire Info

© CalTopo, OpenStreetMap contributors, USDA Farm Service Agency, RSAC, NASA | N: MN 12° E



37°59'50", -119°02'50"
 37°59'50", -119°02'50"
 6418 ft WGS84

Map Layers Ctrl-L

Base Layers

- MapBuilder Topo
- NAIP @ 100% (2013-2015)

Map Sheets

- Stack Map Sheet

Map Overlays

- Contours
- MapBuilder Overlay
- Slope Angle Shading
- Geology
- Public Lands
- Parcel Data **Pro**
- Structures
- Motor Vehicle MVUM
- Recreation
- Fire History **2000-Present**
- Fire Activity **MODIS+VIIRS**
- Sun Exposure
- Cell Coverage

Forecasts

- Weather Shading
- Wind Plot **Speed** Now
- Avalanche

Realtime Data

- Weather Stations **Pro**
- Aircraft **Pro**

Shared Data

- MapBuilder Features
- Shared CalTopo Maps

Prescribed Fire: Planning to Implementation

NEPA

- Categorical Exclusion
- Environmental Assessment
- Environmental Impact Statement

Implementation Planning

- Unit Layout, Specialist Surveys and Protection Areas Identified
- Burn Plan Written: Goals & Objectives, Prescription, Staffing Requirements, Post Burn Patrols and Monitoring,
- Fire Behavior Modeling

Implementation

- Funding Obtained
- Insure all environmental clearance completed, Smoke Management Plan
- Unit preparation: Control lines, hazards mitigated, and holding and firing plan developed, road signs placed.
- Prescription Metrics: Air Resources Board, Drought Monitoring, Local Fuel Monitoring, Site Specific Weather, Spot Weather Forecast
- Resources: Ordered, Briefed, Unit Familiarization, Daily Burn Briefing, Coordination, Coordination, and more Coordination.
- Cost Accounting

Types of Prescribed Fire

Type 1

- High Complexity
- Example: Broadcast Burn, with high number of socio/political issues, values at risk, infrastructure and hazards.
- Prescribed Fire Burn Boss Type 1 (RXB1)

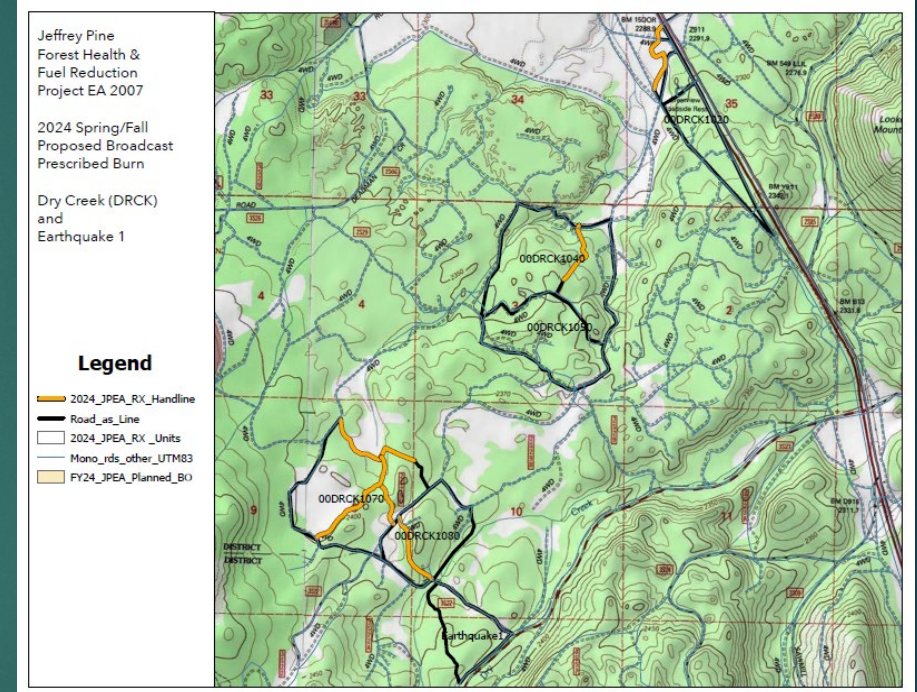
Type 2

- Moderate Complexity
- Example: Broadcast Burn, with moderate socio/political issues, values at risk, and hazards.
- Prescribed Fire Burn Boss Type 2 (RXB2)

Type 3

- Low Complexity
- Example: Pile Burn: Surrounded by snow
- Prescribed Fire Burn Boss Type 3 (RXB3)
- Prescribed fires where the final complexity is rated low

Type 2 Prescribed Fire on the Inyo National Forest



Joint Effort between the:

Forest Service
US Park Service

Bureau of Land Management
Local Cooperators

NGO's
Private Contractors

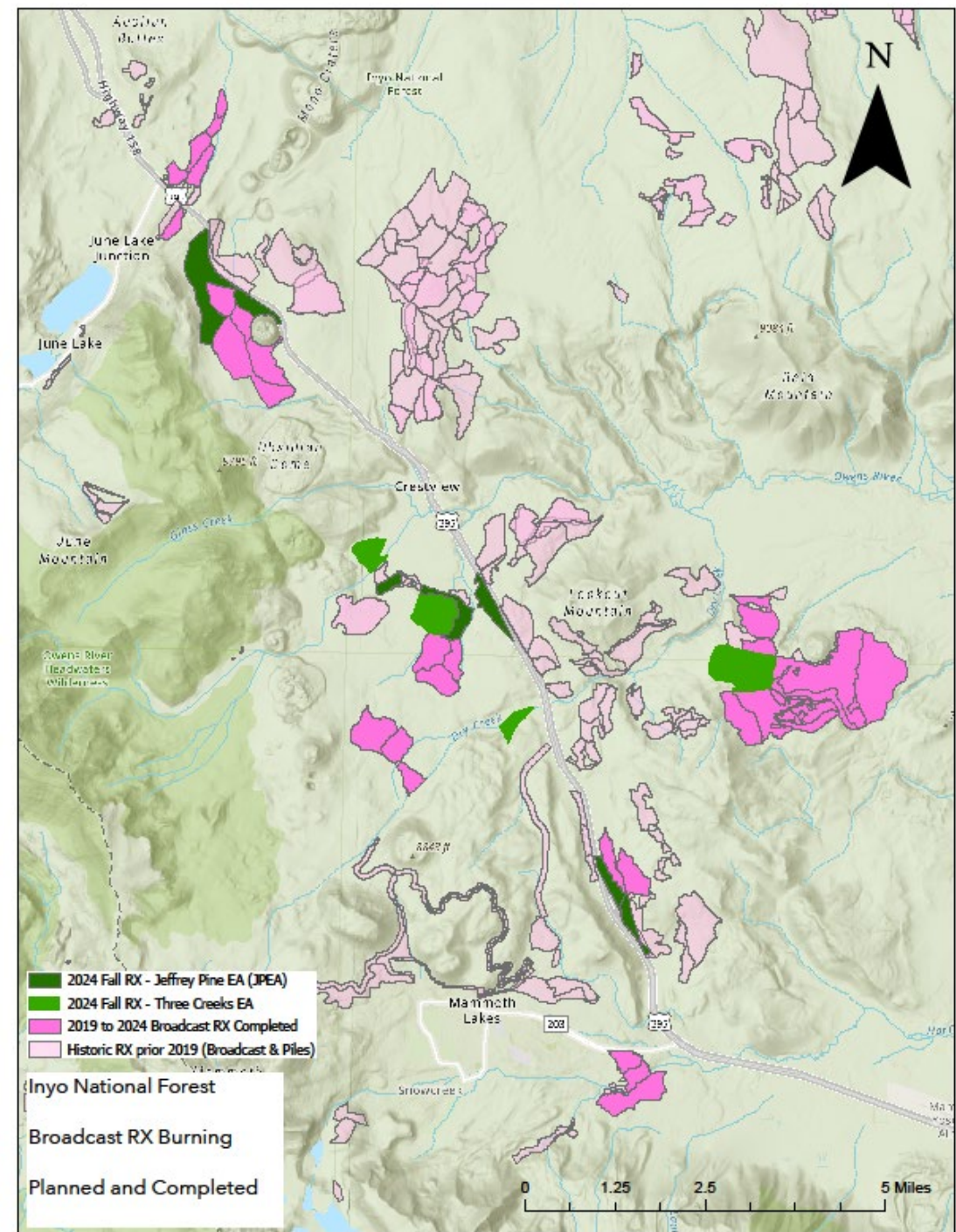
Type 3 Prescribed Fire on the Inyo National Forest



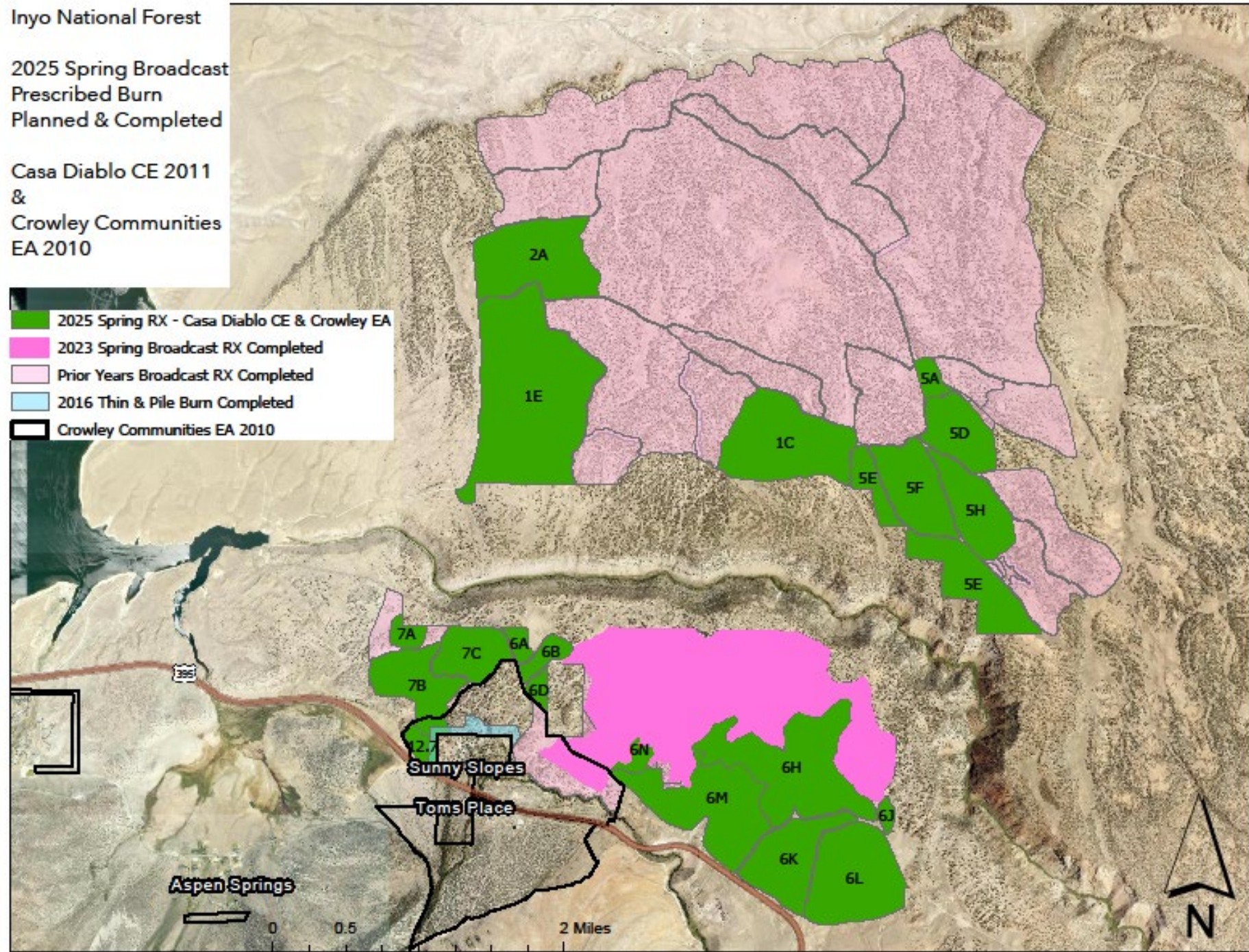
Accomplished Prescribed Fire 2009 to 2024 & Planned RX Projects for Fall 2024 and Spring 2025

Acres of Prescribed Fire 2015 to 2024

2015	215
2016	0
2017	257
2018	1313
2019	1490
2020	362
2021	0
2022	402
2023	2307
2024 to Date	2154

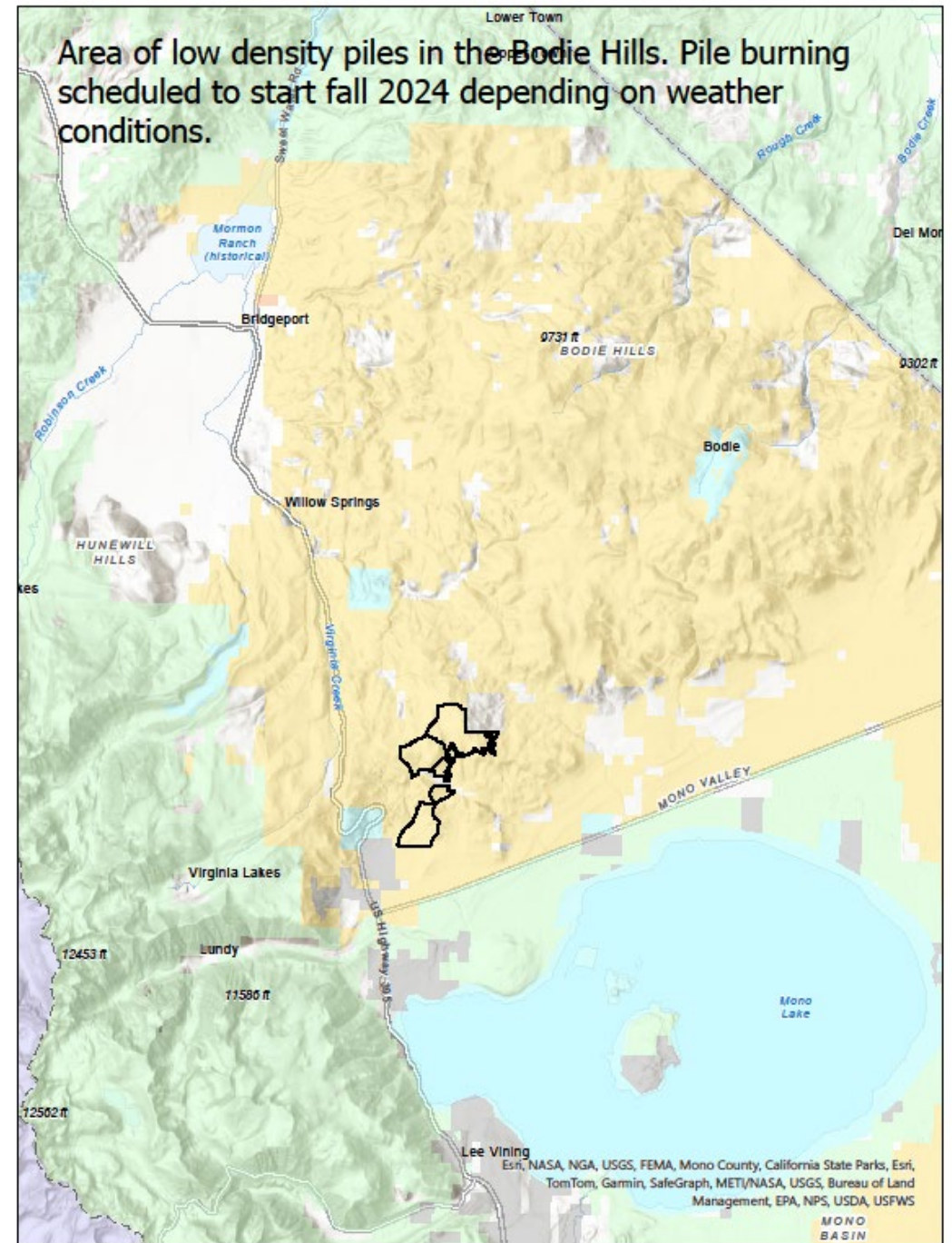


Planned RX Projects for Fall 2024 and Spring 2025 Continued:



BLM Prescribed Fire and Fuels Treatments

Area of low density piles in the Bodie Hills. Pile burning scheduled to start fall 2024 depending on weather conditions.

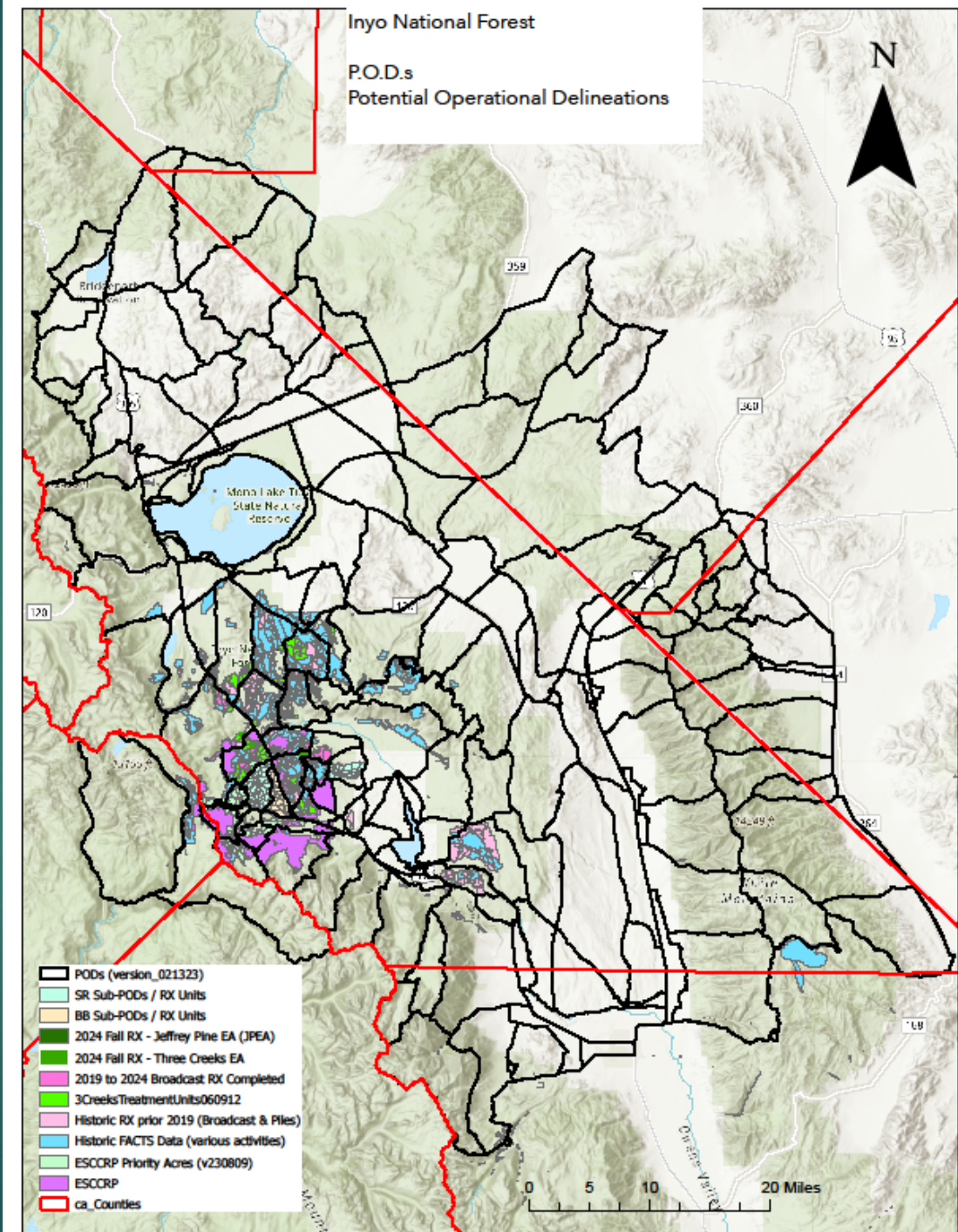




How do we increase Pace and Scale?

Landscape Scale Projects: Coordinated Planning and
Implementation

Potential Operational Delineations (PODs)



Eastern Sierra Fire Climate and Community Resilience Project

ESCCRP Web Map

Project boundary interactive web map tool

Legend

Non-federal parcels



Priority Acres



> 16



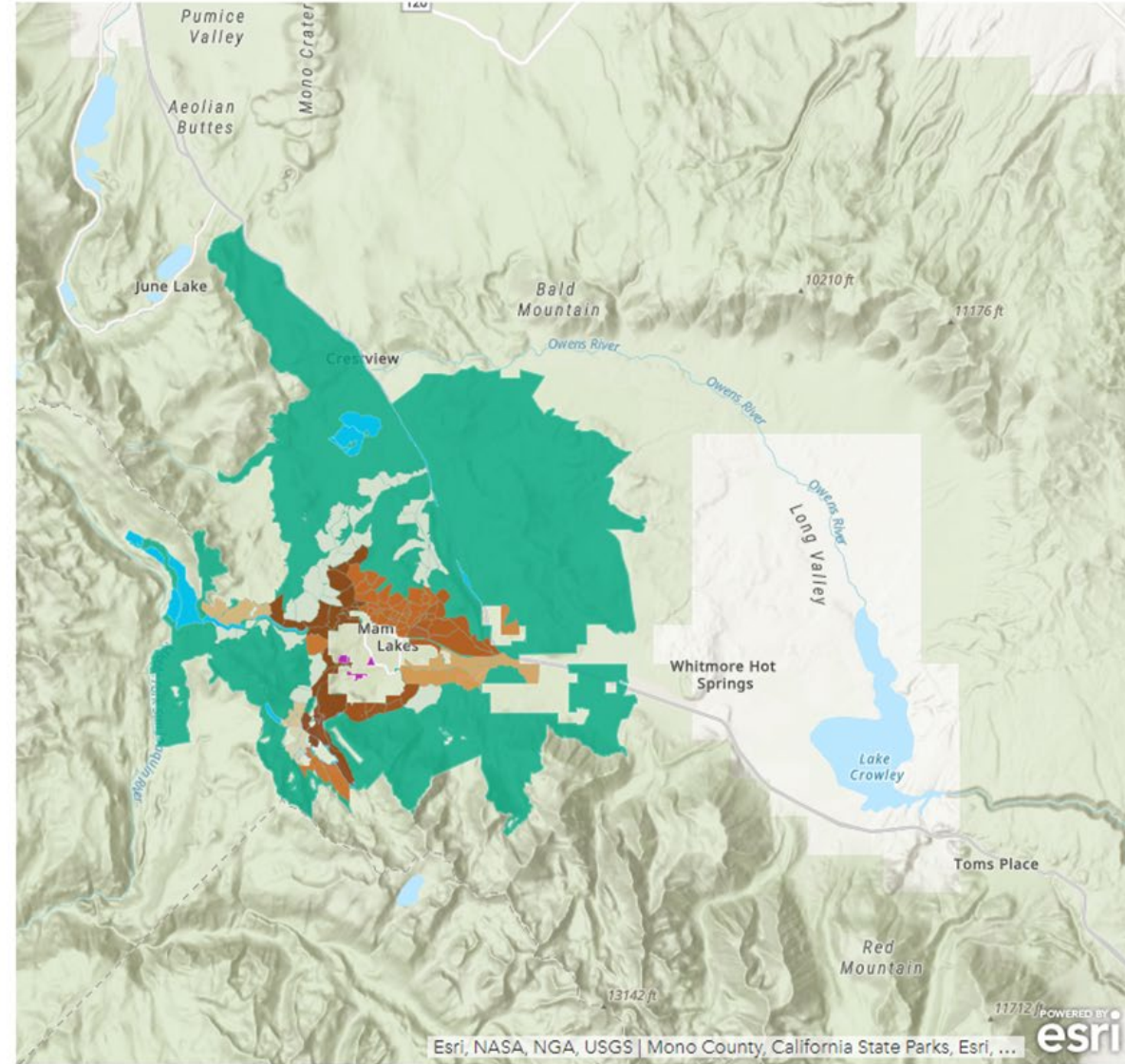
10.58

< 5

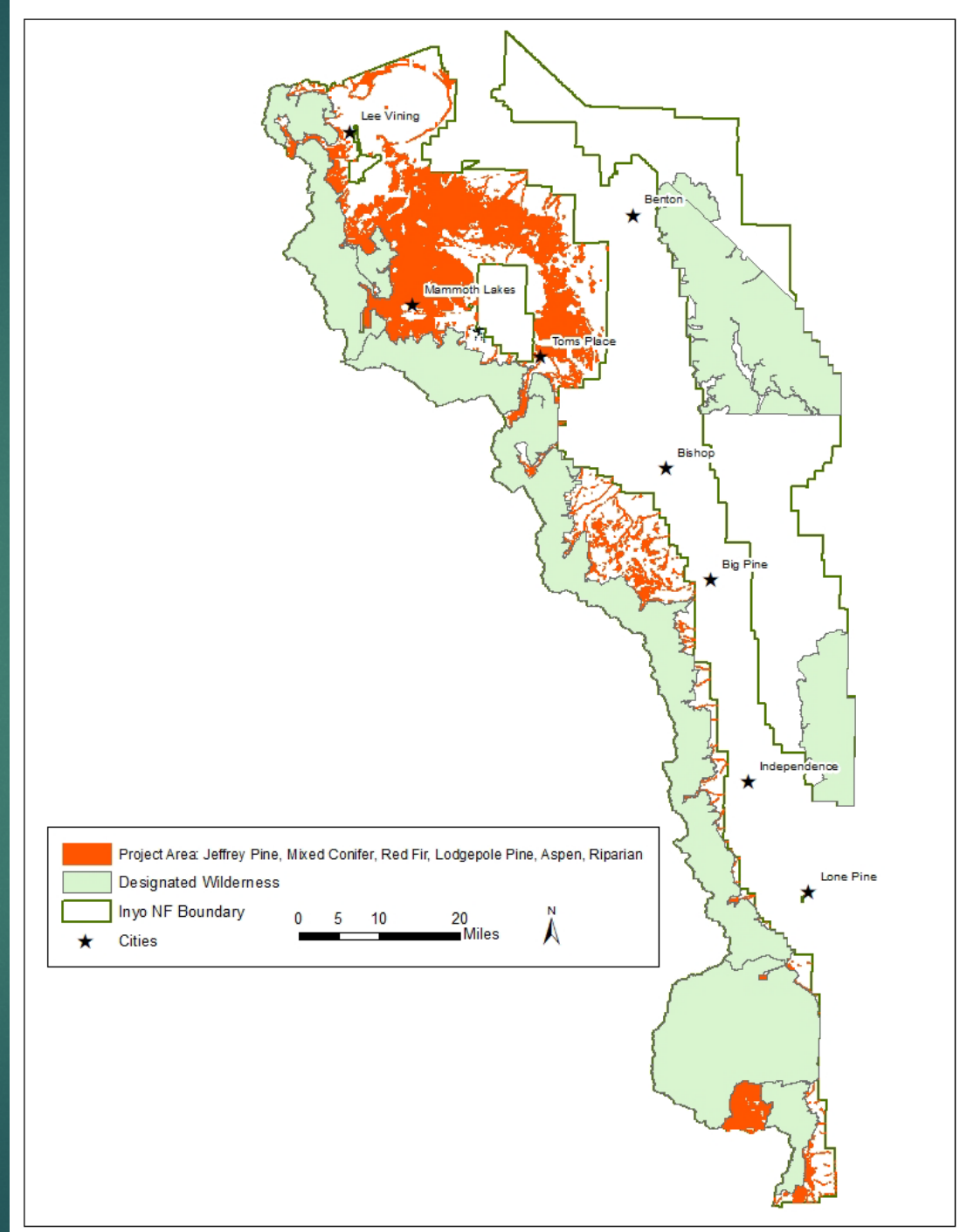
CAL FIRE funded treatment units

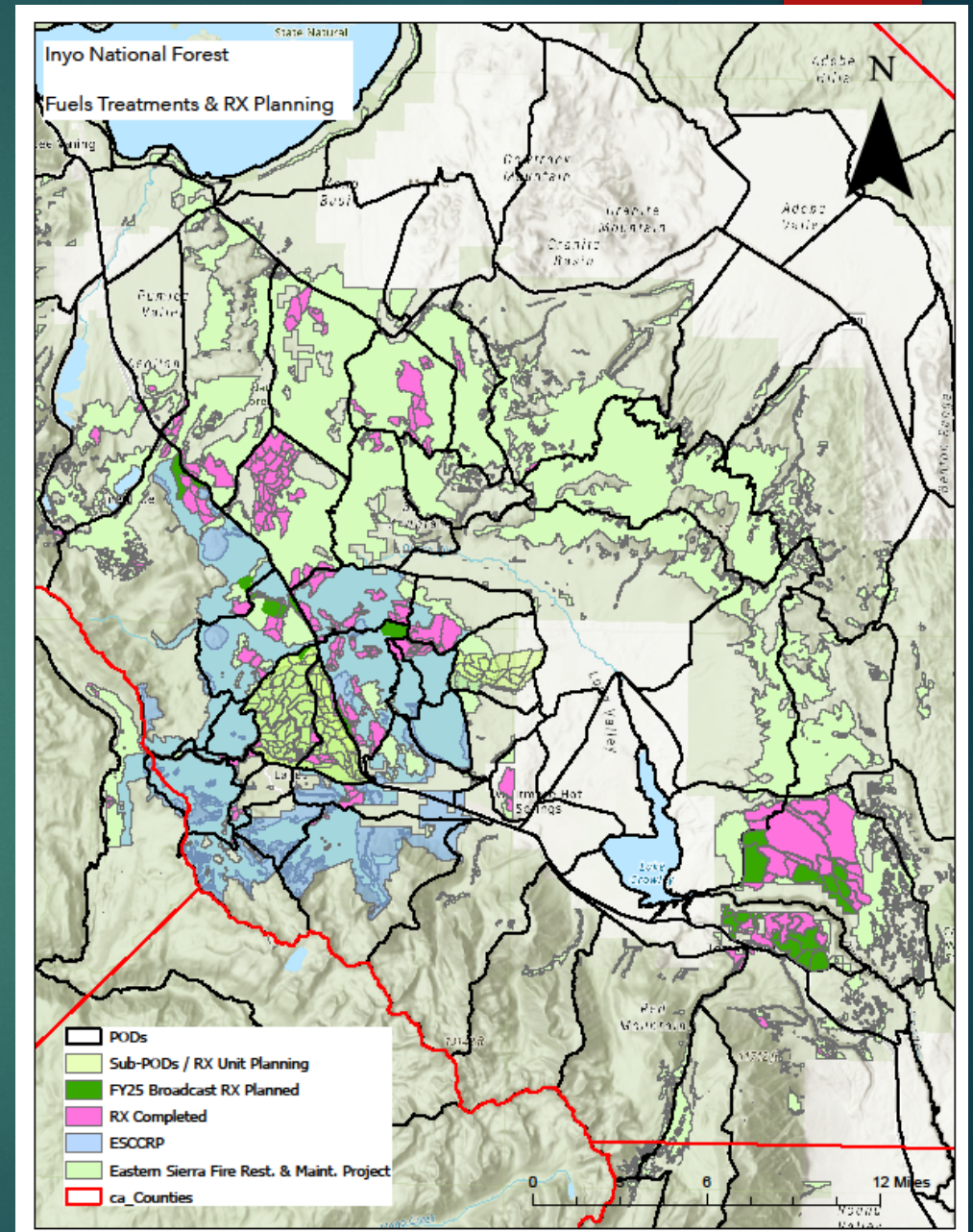
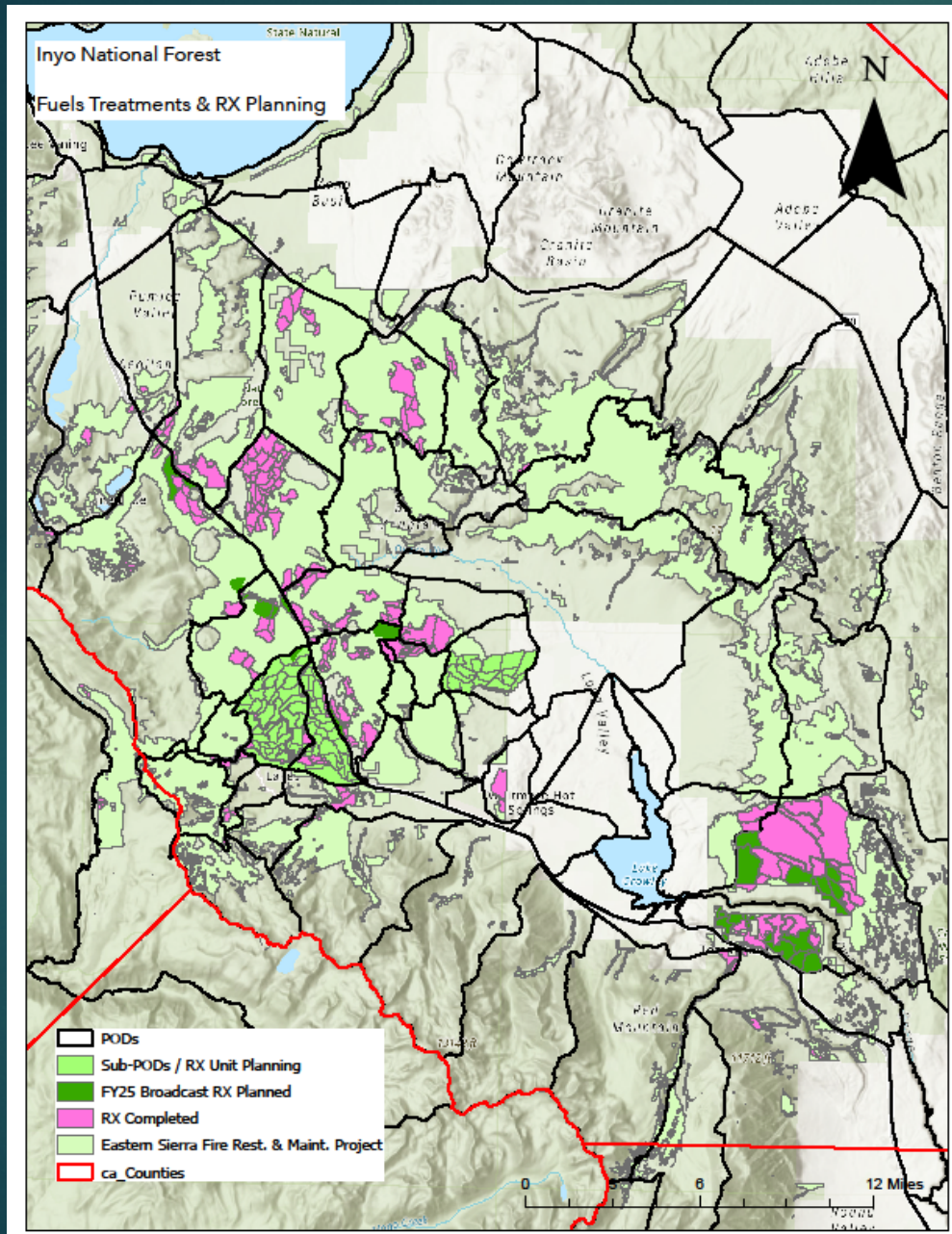


ESCCRP Project Area



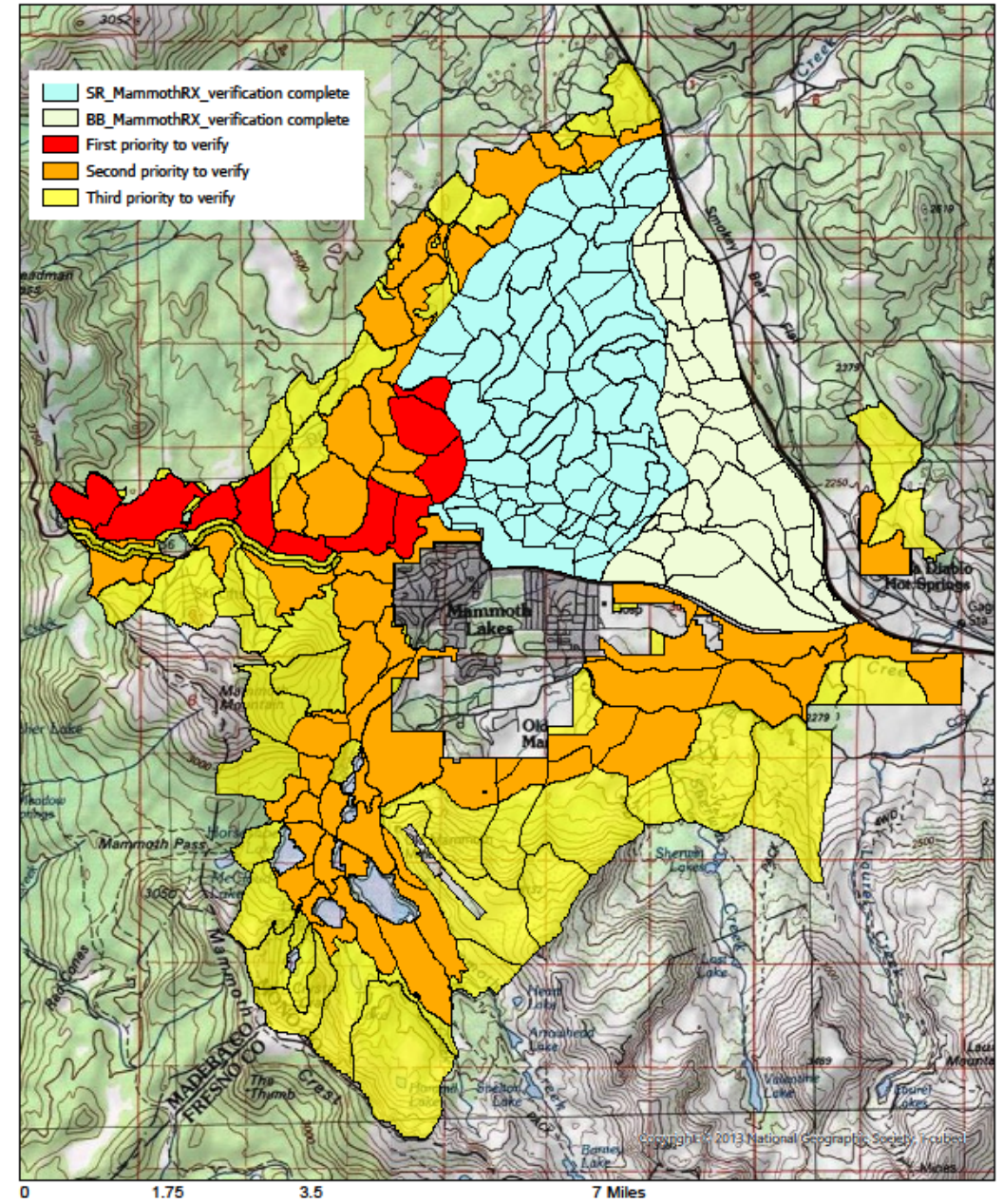
Eastern Sierra Fire Restoration and Maintainace Project



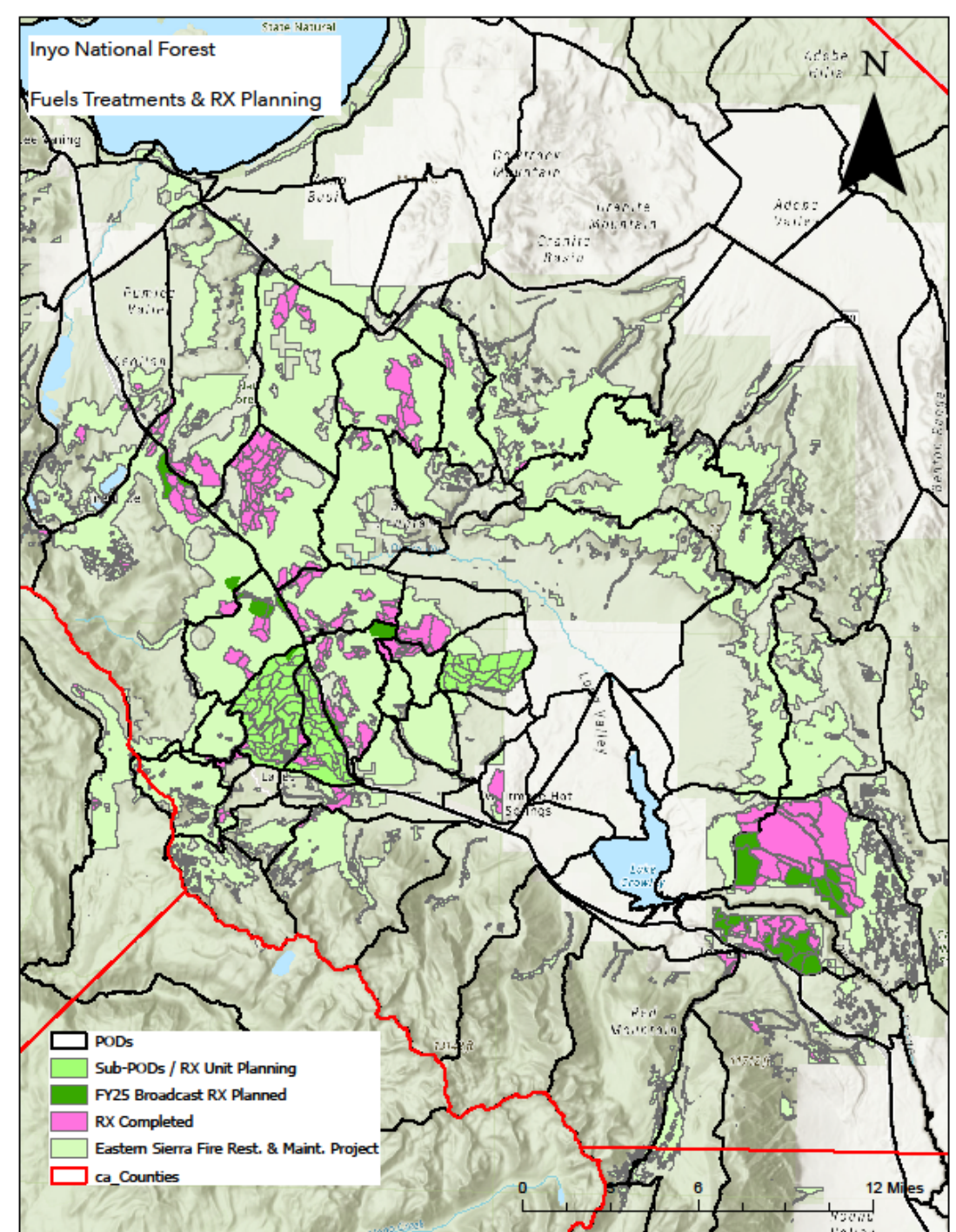


Unit Layout for the
Eastern Sierra Fire Restoration and Maintenance Project
&
Eastern Sierra Fire Climate and Community Resilience
Project

ESCCRP Unit Delineation



Forest Wide Expansion:



Wildland Fire: Managed for Multiple Objectives

Cow Track Fire 2023 – 360 acres

Springs Fire 2019 – 6614 acres

Cow Fire 2019 – 1875 acres



Questions?

