

Copyright (C) 2014 by

 Triad/Holmes Associates.

 All Rights Reserved. This

 Document is Intended Only

 for Use on the Project

 Specified in the Title Block.

 Any Reproduction of this

 Document or Portions of

 this Document, Without the

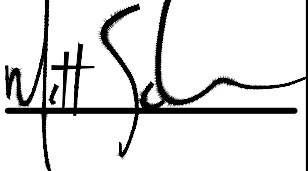
 Expressed Written Consent

 of Triad/Holmes is

 Prohibited.

PREPARED & SUBMITTED BY:





 DATE: 07/8/2014

JUNE LAKE

 STREETS REHABILITATION PROJECT

 BIG ROCK ROAD

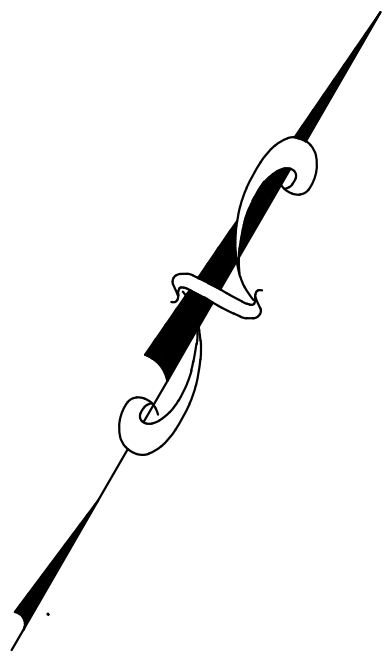
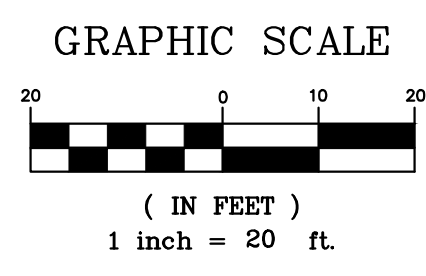
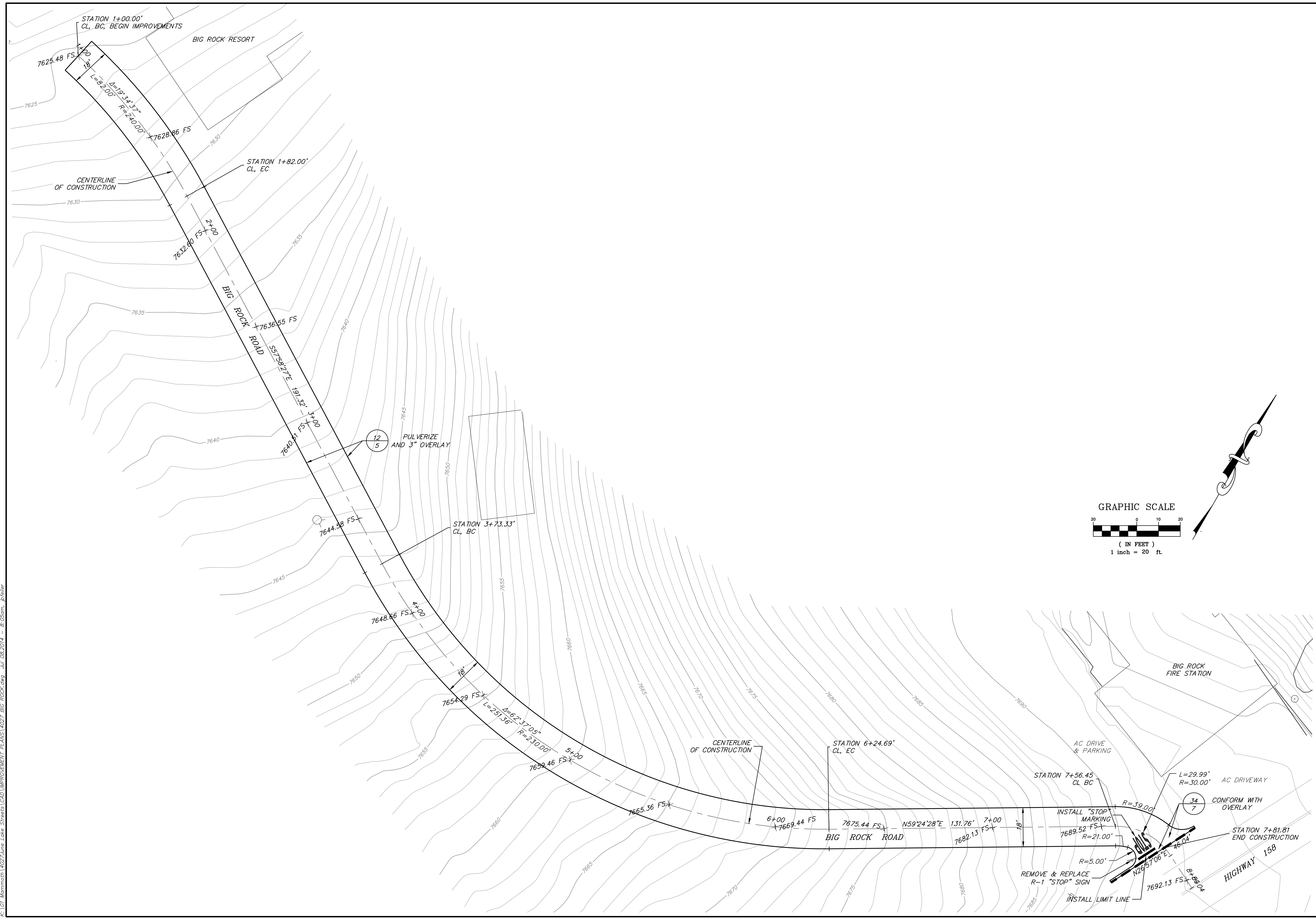
DATE JULY 8, 2014

 SCALE AS SHOWN

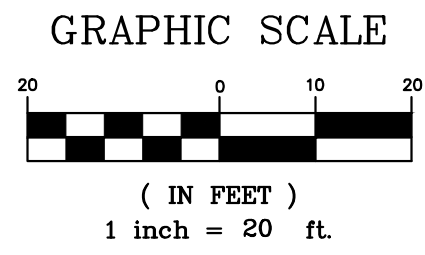
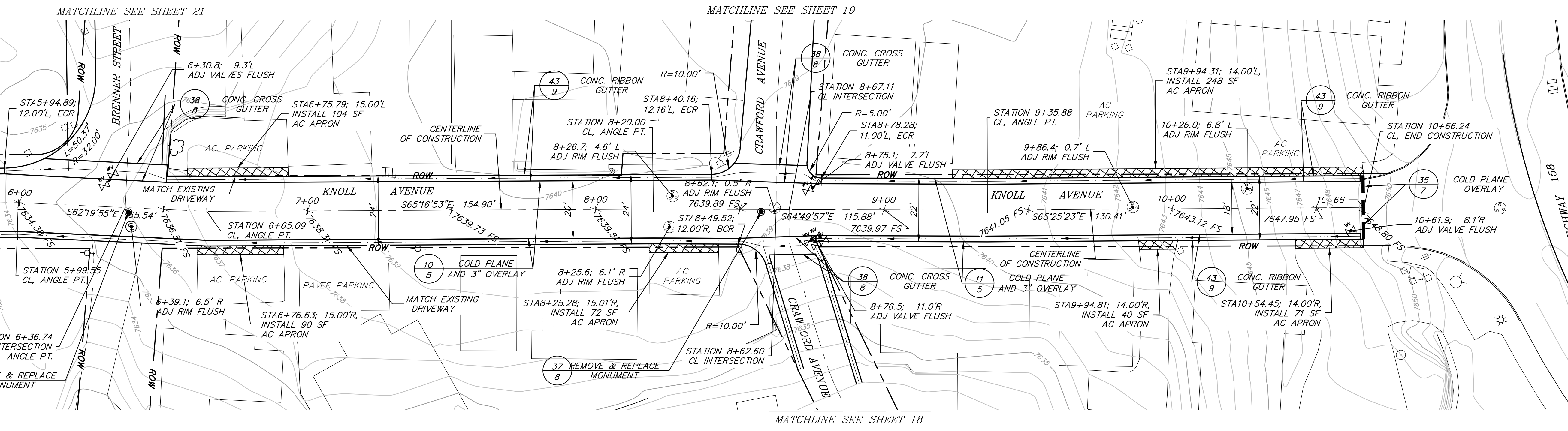
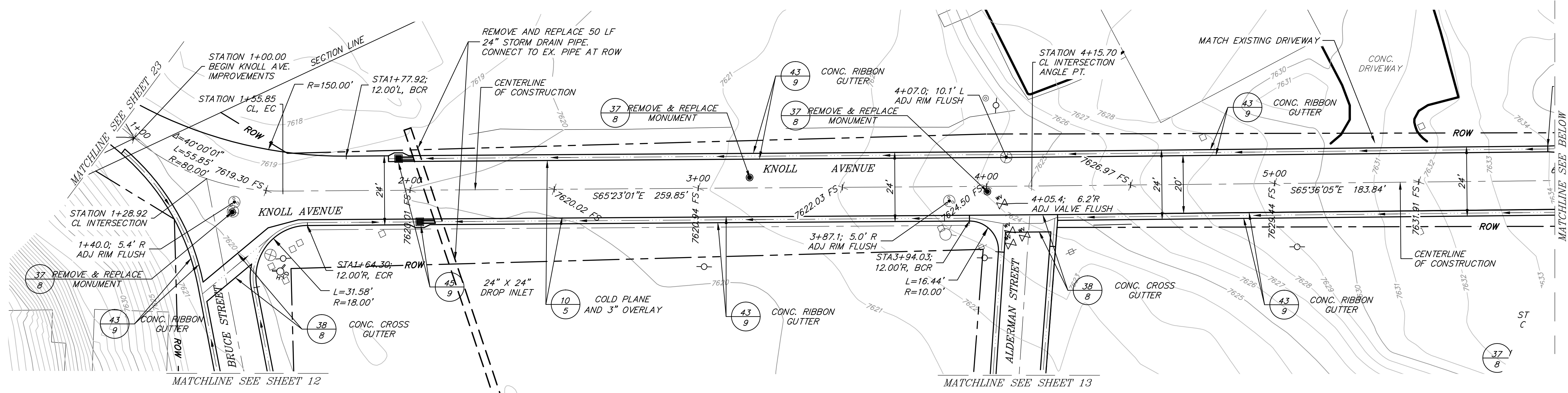
 DRAWN JSP/TT

 JOB NO. 01.4027

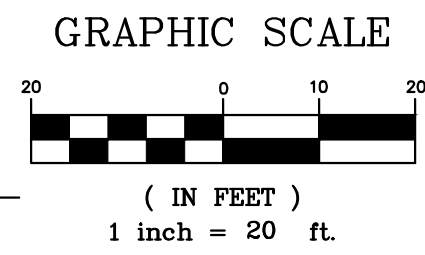
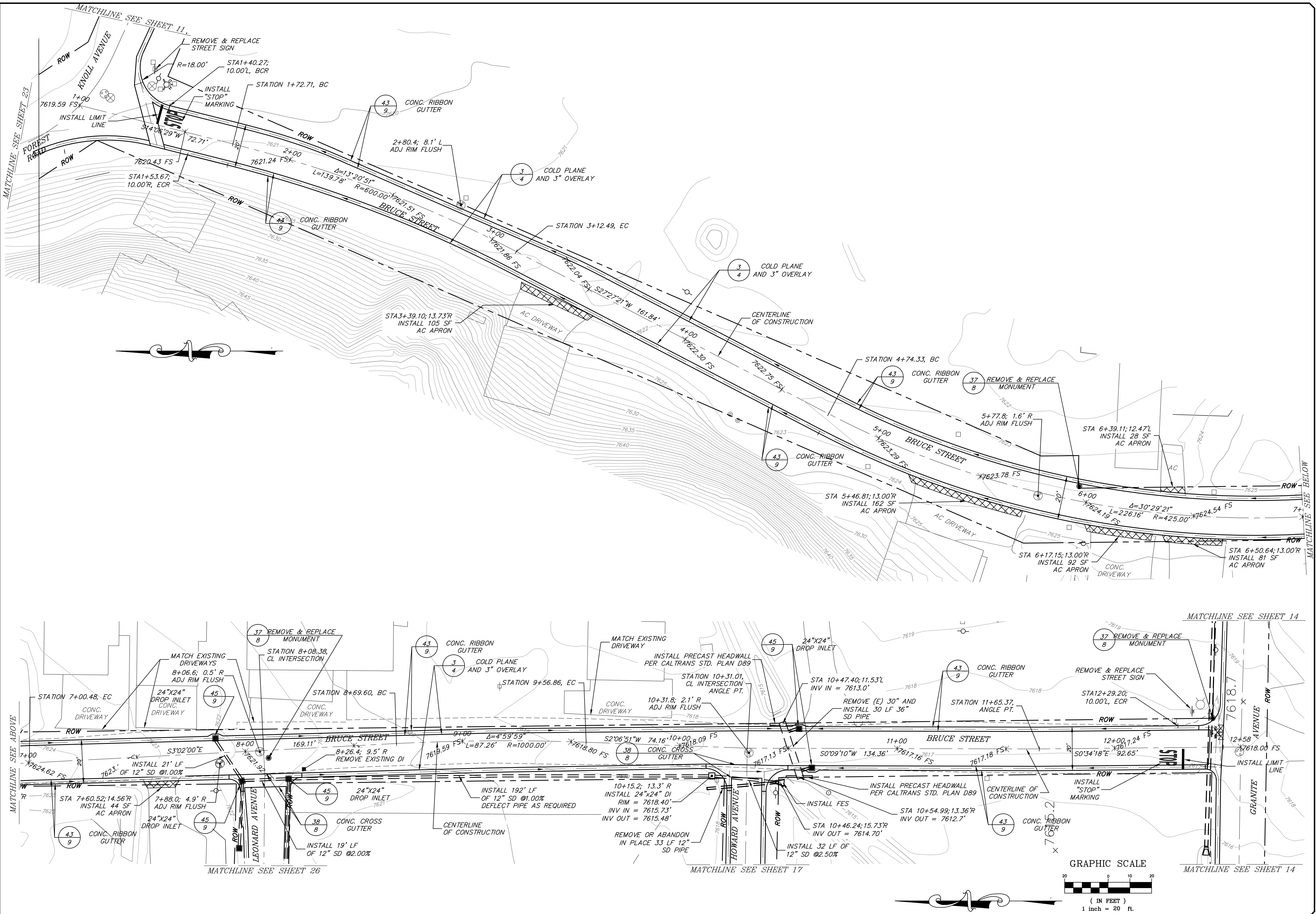
 SHEET



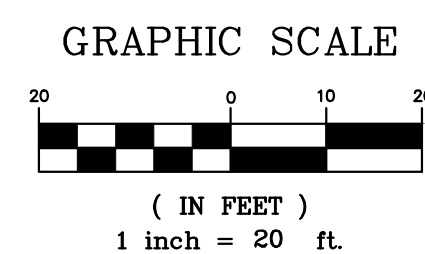
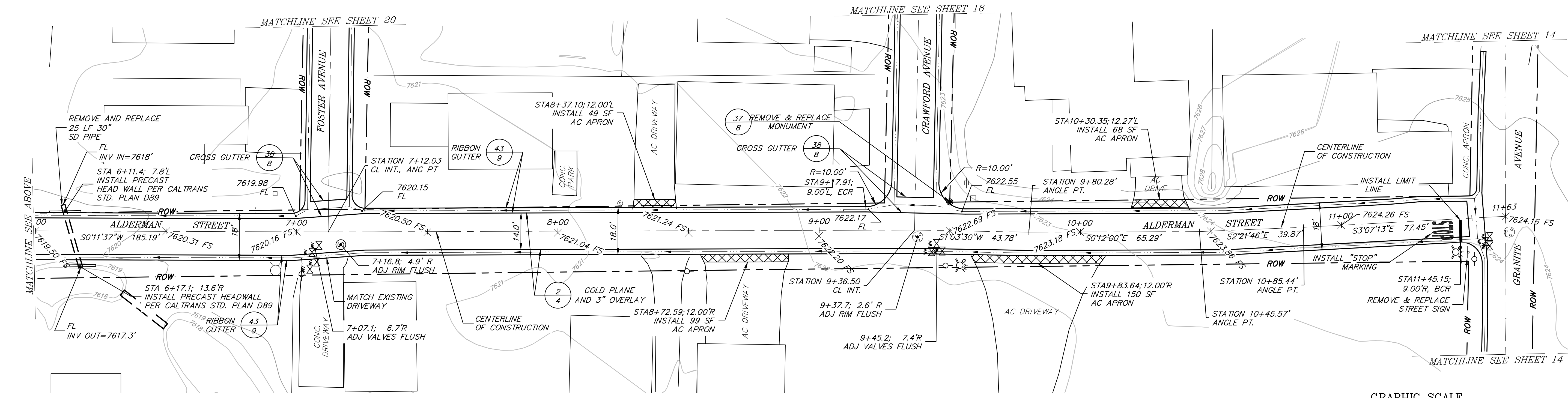
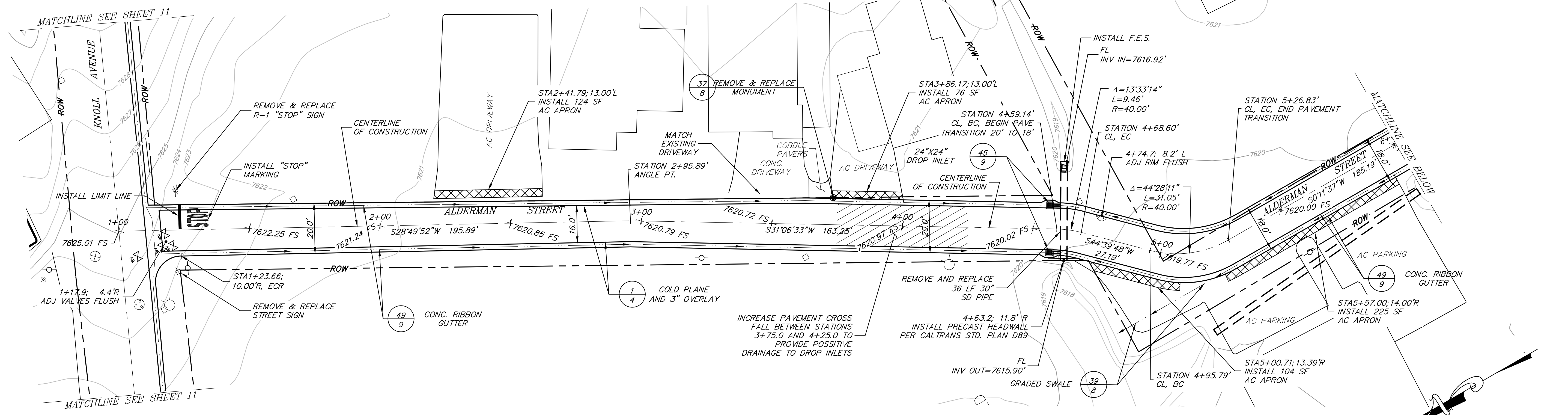
K:\01_Mammoch\4027\June Lake Streets\CAD\IMPROVEMENT PLANS\4027 BIG ROCK.dwg Jul 08, 2014 - 8:05am, jbellier



K:\01_Mammouth\4027\June Lake Streets\CAD\IMPROVEMENT PLANS\4027_KNOLL AVE-FOREST RD.dwg Jul 08, 2014 - 8:10am - jps/rlr

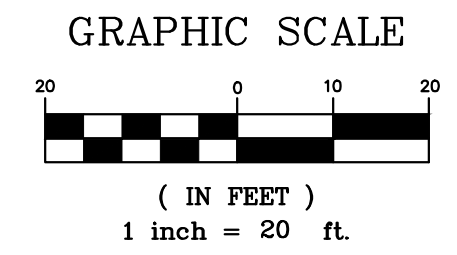
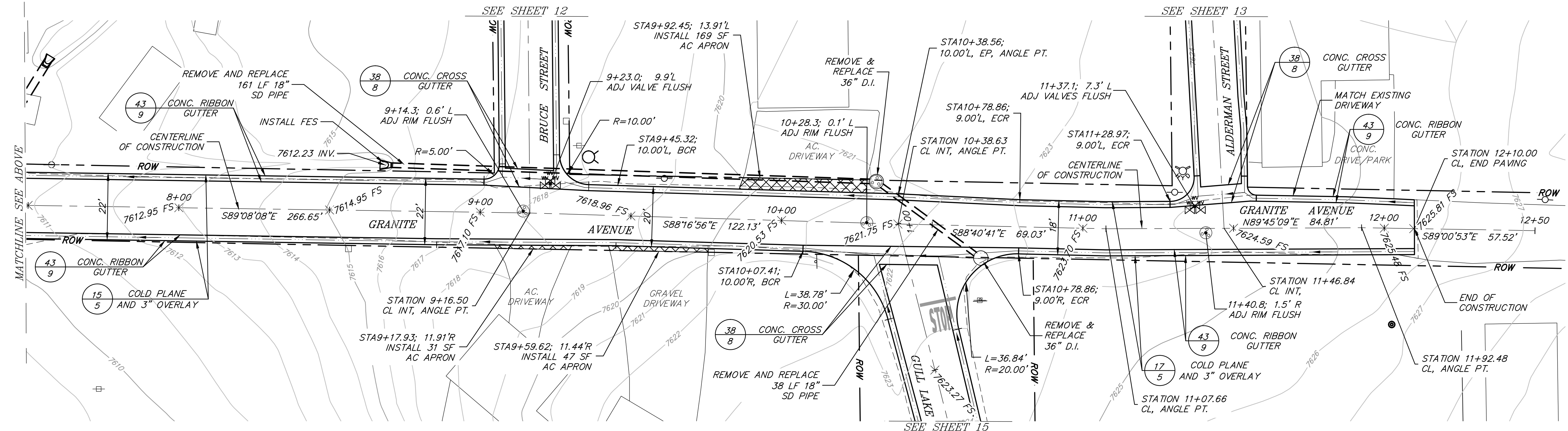
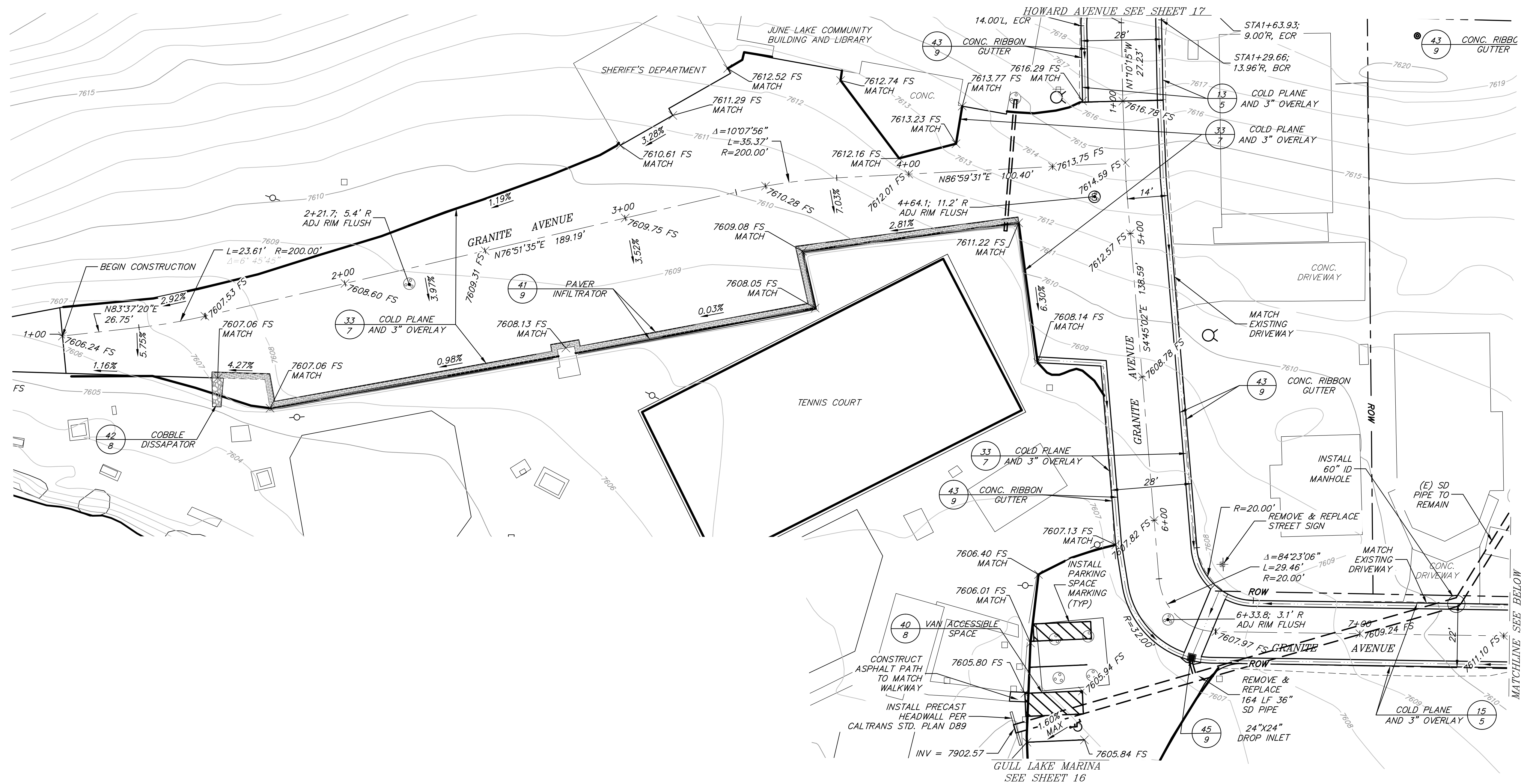


K:\01_Mammouth\4027\June Lake Streets\CAD\IMPROVEMENT PLANS\4027 BRUCE STREET.dwg Jul 08, 2014 - 8:15am jfs/rlr



K:\01 Mammmoth\4027\June Lake Streets\CAD\IMPROVEMENT PLANS\4027\Alderman Street 01.dwg Jul 08, 2014 8:18am jef/efr

K:\01_Mammoth\4022\June Lake Streets\CAD\IMPROVEMENT PLANS\4022 GRANITE-GULL LAKE-HOWARD.dwg Jul 08, 2014 - 8:23am jbf/abr



t h a
 triad/holmes assoc.
 civil engineering
 land surveying
 MAMMOTH LAKES
 BISHOP
 REDWOOD CITY
 SAN LUIS OBISPO

post office box 1570
 588 Mammoth rd. ste. 202
 MAMMOTH LAKES, CA 93546
 phone (760) 934-7588
 fax (760) 934-5619
 e-mail thad@tholinc.com

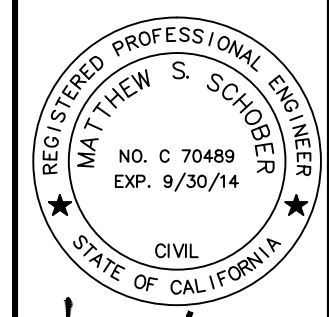
873 north main st. suite 150
 BISHOP, CA 93514
 phone (760) 873-4273
 fax (760) 873-8024
 e-mail bishop@tholinc.com

777 woodside rd. suite c
 REDWOOD CITY, CA 94061
 phone (650) 366-0216
 fax (650) 366-0298
 e-mail sf@tholinc.com

555 charro st. suite a
 SAN LUIS OBISPO, CA 95050
 phone (805) 544-8908
 fax (805) 544-8932
 e-mail slol@tholinc.com

Copyright (C) 2014 by
 Triad/Holmes Associates.
 All Rights Reserved. This
 Document is intended only
 for use on the Project
 Specified in the Title Block.
 Any Reproduction of this
 Document or Portions of
 this Document, Without the
 Expressed Written Consent
 of Triad/Holmes is
 Prohibited.

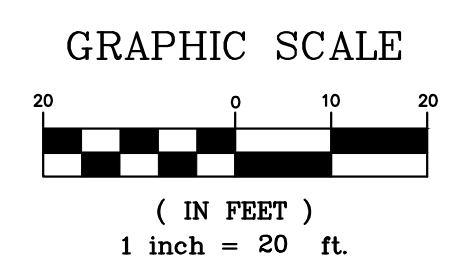
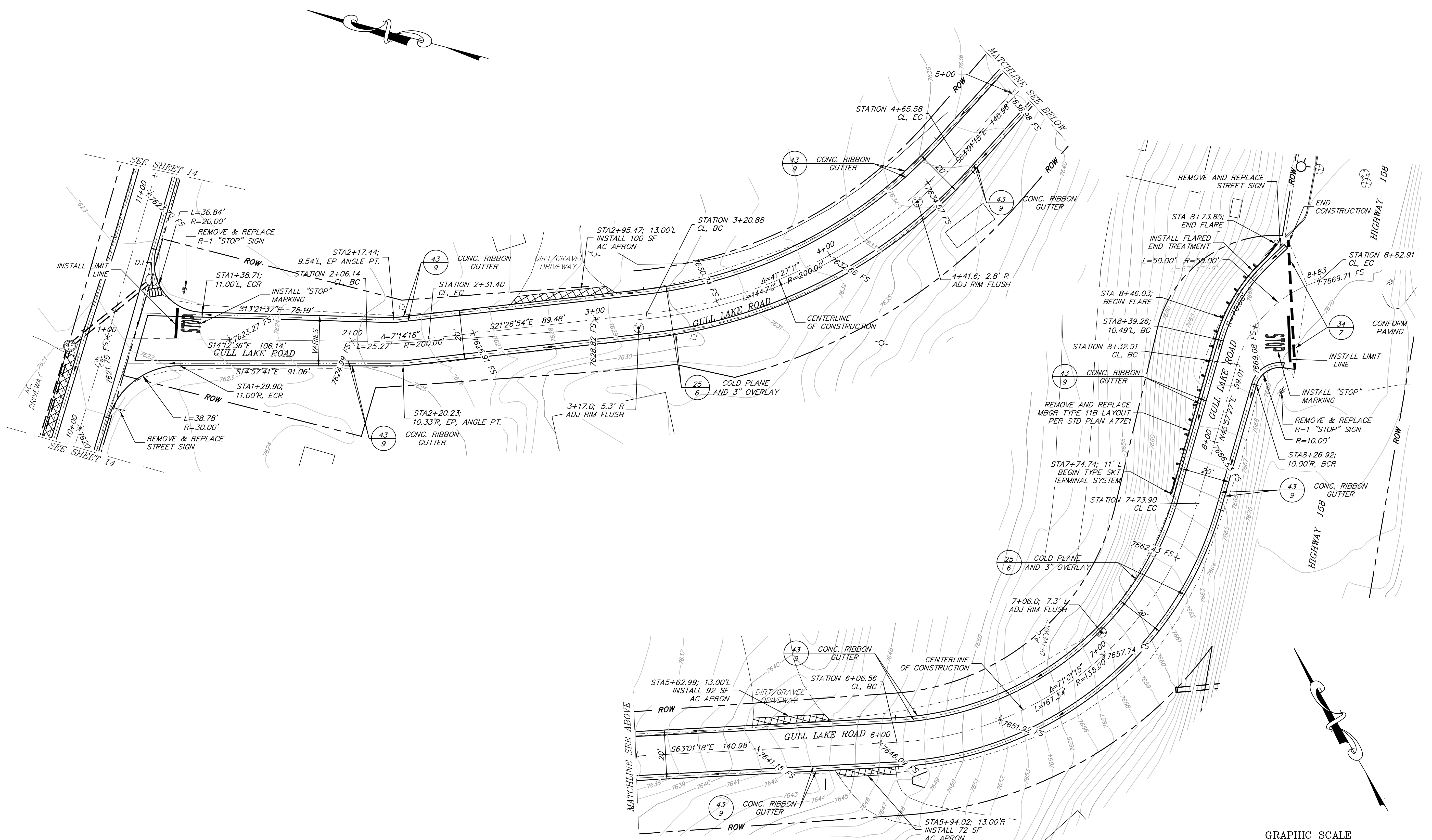
PREPARED & SUBMITTED BY:



DATE: 07/8/2014

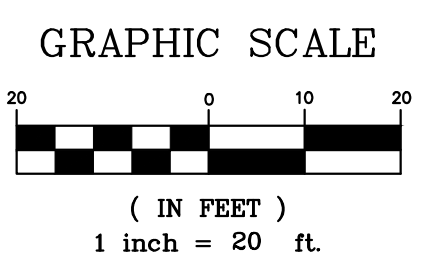
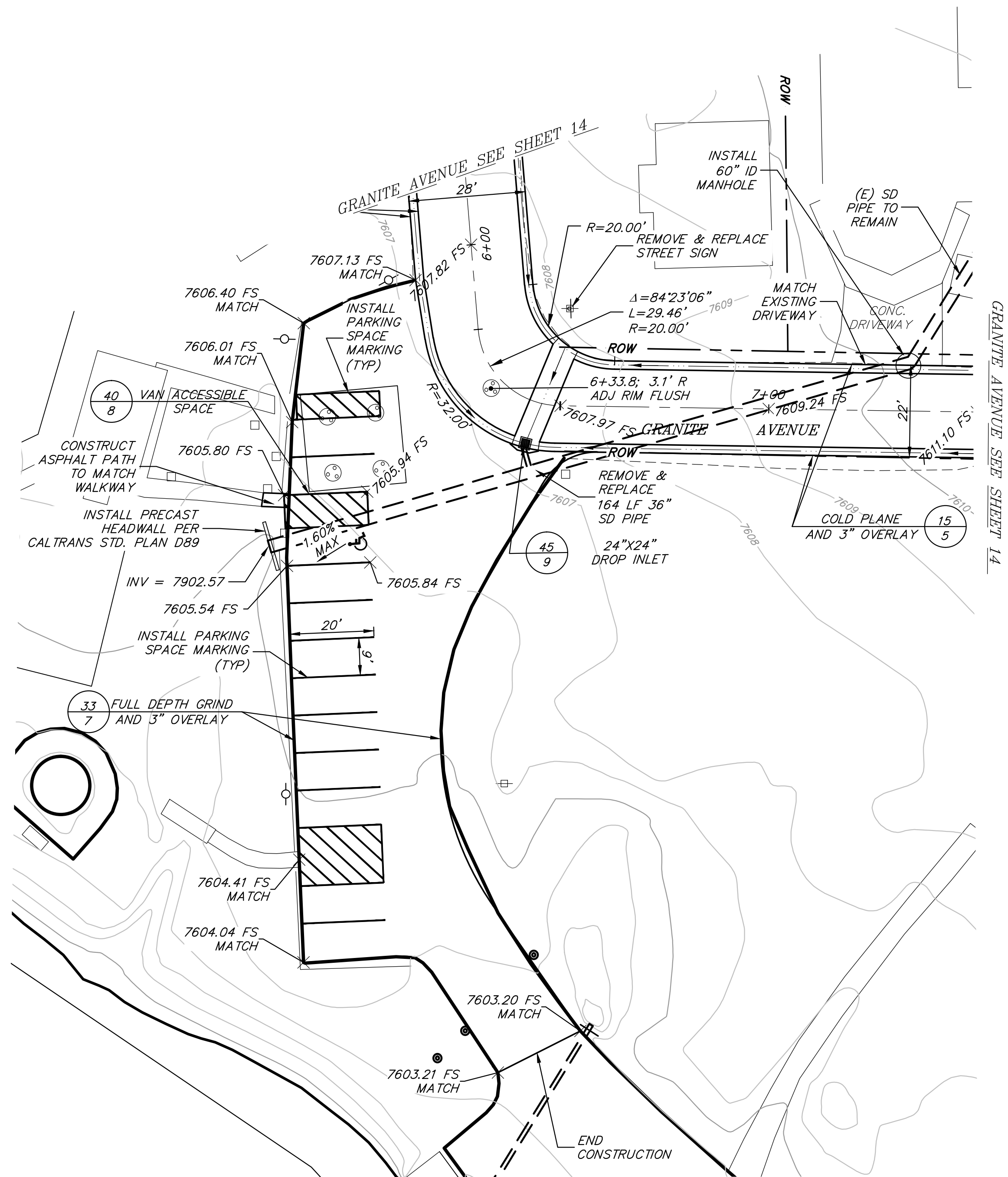
JUNE LAKE
 STREETS REHABILITATION PROJECT
 GRANITE AVENUE/COMMUNITY CENTER DRIVE

DATE: JULY 8, 2014
 SCALE: AS SHOWN
 DRAWN: JSP/TT
 JOB NO.: 01.4027
 SHEET: 14
 OF 39 SHEETS



K:\01_Mammoch\4027\June Lake Streets\CAD\IMPROVEMENT PLANS\4027 GRANITE-GULL LAKE-HOWARD.dwg Jul 08, 2014 - 8:25am jsp/TT

K:\01_Mammoth\4027\June Lake Streets\CAD\IMPROVEMENT PLANS\4027 GRANITE-GULL LAKE-HOWARD.dwg Jul 08, 2014 - 8:26am jf6/ter



t h a
 triad/holmes assoc.
 civil engineering
 land surveying
 MAMMOTH LAKES
 BISHOP
 REDWOOD CITY
 SAN LUIS OBISPO

post office box 1570
 542 W. Mammoth Rd., Ste. 202
 MAMMOTH LAKES, CA 93546
 phone (760) 934-7548
 fax (760) 934-5619
 e-mail triad@thinc.com

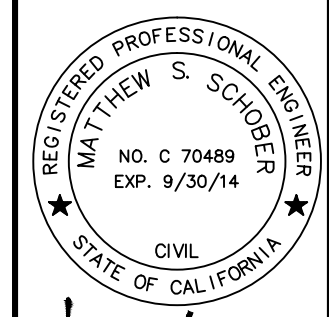
873 north main st. suite 150
 BISHOP, CA 93514
 phone (760) 873-4273
 fax (760) 873-8024
 e-mail bishop@thinc.com

777 woodside rd. suite a
 REDWOOD CITY, CA 94061
 phone (650) 366-0216
 fax (650) 366-0298
 e-mail sf@thinc.com

555 chorro st. suite a
 SAN LUIS OBISPO, CA 93408
 phone (805) 544-8908
 fax (805) 544-8932
 e-mail sl@thinc.com

Copyright (C) 2014 by
 Triad/Holmes Associates.
 All Rights Reserved. This
 Document is Intended Only
 for Use on the Project
 Specified in the Title Block.
 Any Reproduction of this
 Document or Portions of
 this Document, Without the
 Express Written Consent
 of Triad/Holmes is
 Prohibited.

PREPARED & SUBMITTED BY:



Matthew S. Schoder

DATE: 07/8/2014

JUNE LAKE
 STREETS REHABILITATION PROJECT
 GULL LAKE MARINA DRIVE

DATE JULY 8, 2014

SCALE AS SHOWN

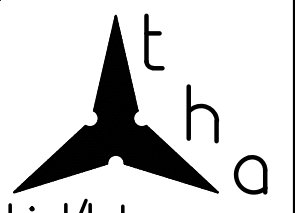
DRAWN JSP/TT

JOB NO. 01.4027

SHEET

16

OF 39 SHEETS



triad/holmes assoc.
civil engineering
land surveying
MAMMOTH LAKES
BISHOP
REDWOOD CITY
SAN LUIS OBISPO

post office box 1570
588 W. Mammoth Rd., Ste. 202
MAMMOTH LAKES, CA 93546
phone (760) 934-7588
fax (760) 934-5619
e-mail triad@thinc.com

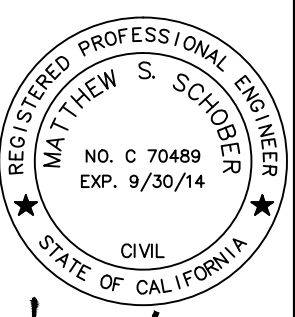
873 north main st. suite 150
BISHOP, CA 93514
phone (760) 873-4273
fax (760) 873-8024
e-mail bishop@thinc.com

777 woodside rd. suite a
REDWOOD CITY, CA 94061
phone (650) 366-5216
fax (650) 366-0298
e-mail sf@thinc.com

555 chorro st. suite a
SAN LUIS OBISPO, CA 93408
phone (805) 544-8908
fax (805) 544-8932
e-mail sls@thinc.com

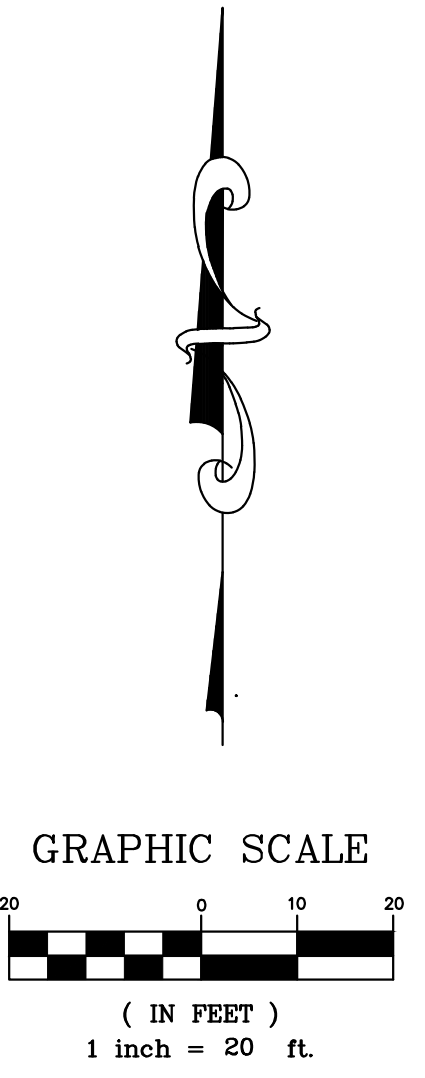
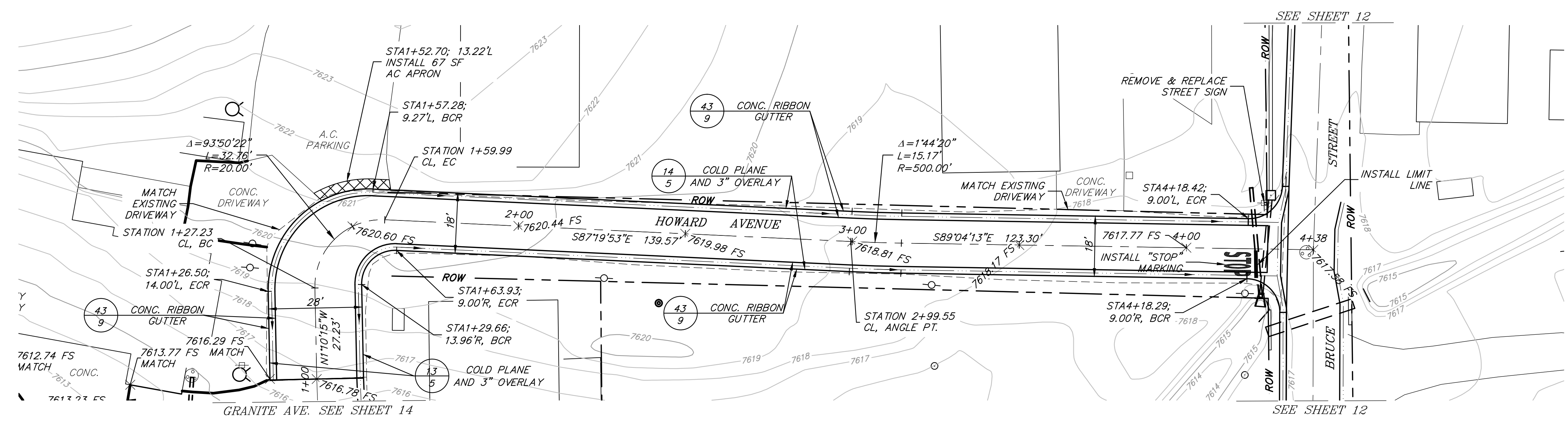
Copyright (C) 2014 by
Triad/Holmes Associates.
All Rights Reserved. This
Document is Intended Only
for Use on the Project
Specified in the Title Block.
Any Reproduction of this
Document or Portions of
this Document, Without the
Expressed Written Consent
of Triad/Holmes is
Prohibited.

PREPARED & SUBMITTED BY:



Matthew S. Schoder

DATE: 07/8/2014

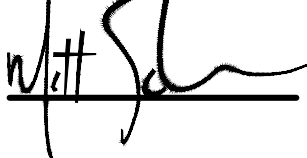


JUNE LAKE
STREETS REHABILITATION PROJECT
HOWARD AVENUE

DATE: JULY 8, 2014
SCALE: AS SHOWN
DRAWN: JSP/TT
JOB NO.: 01.4027
SHEET:

K:\01_Mammouth\4027\June Lake Streets\CAD\IMPROVEMENT PLANS\4027 GRANITE-GULL LAKE-HOWARD.dwg Jul 08, 2014 - 8:27am jls/ter





DATE: 07/08/2014

JUNE LAKE

 STREETS REHABILITATION PROJECT

 CRAWFORD AVENUE

DATE JULY 8, 2014

 SCALE AS SHOWN

 DRAWN JSP/TT

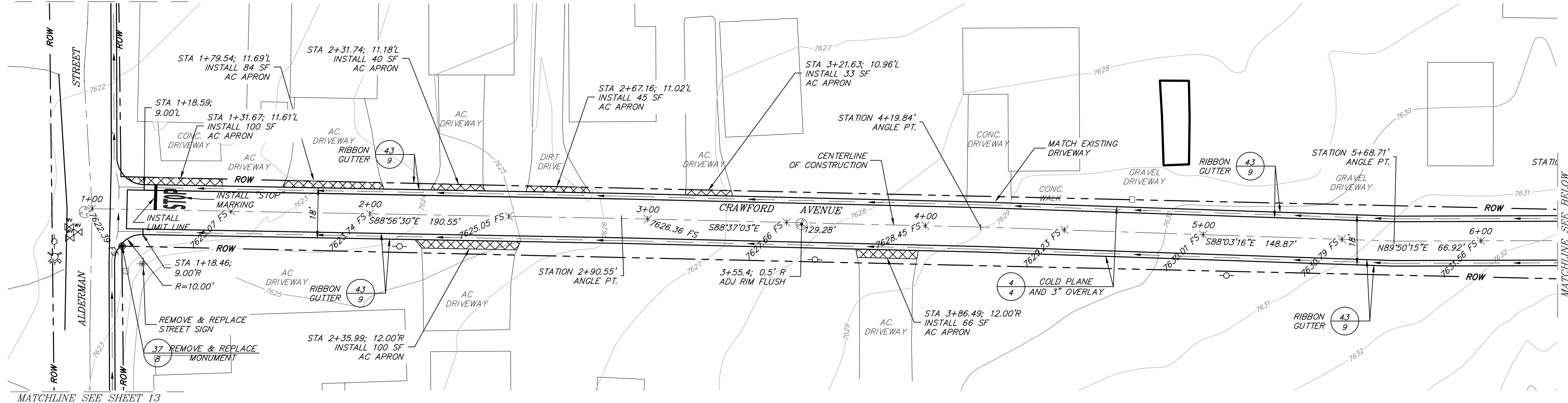
 JOB NO. 01.4027

 SHEET

18

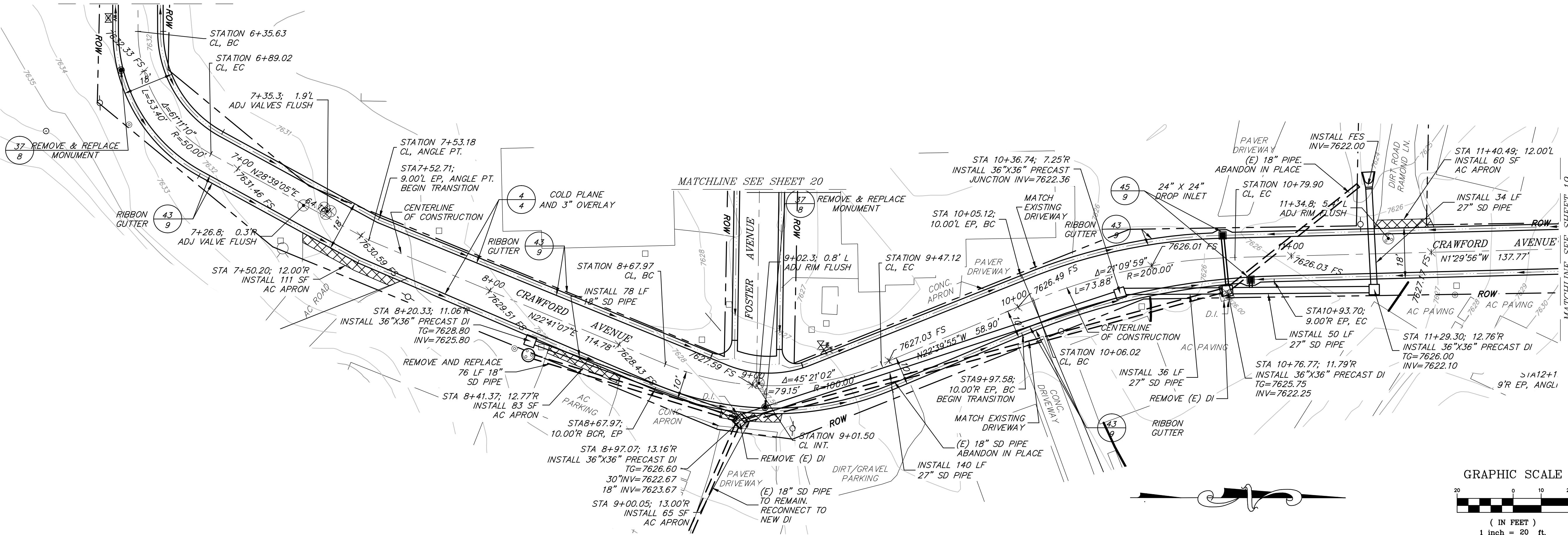
 OF 39 SHEETS

MATCHLINE SEE SHEET 13

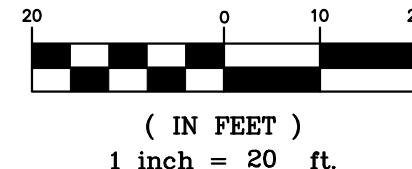


MATCHLINE SEE SHEET 13

MATCHLINE SEE ABOVE



GRAPHIC SCALE



K:\01_Mammouth\4027\June Lake Streets\CAD\IMPROVEMENT PLANS\4027_CRAWFORD AVE.dwg Jul 08, 2014 - 8:29am, jshroder

JUNE LAKE

 STREETS REHABILITATION PROJECT

 CRAWFORD AVENUE

K:\01_Mammmoth\4027\June Lake Streets\CAD\IMPROVEMENT PLANS\4027_CRAWFORD_AVE.dwg Jul 08, 2014 - 8:30am, jshelton

