

## **Public Health**

### **DEPARTMENT 847-860-862**

#### **DEPARTMENT MISSION STATEMENT**

Our mission is to promote and protect a Mono County culture of health and safety in the community and environment through outreach, education, and prevention. Our core values include wellness, integrity, respect, caring, excellence in quality and service, personal and professional growth, collaboration, and flexibility.

#### **DEPARTMENTAL OVERVIEW**

Environmental and Public Health promote and protect the health of people and the communities where they live, learn, work and play. Through an upstream approach, Mono County Health Department strives to prevent people from getting sick or injured and promotes wellness by encouraging healthy behaviors. The 10 Essential Public Health Functions serve as a framework of how local, State and Federal mandates and core functions are upheld and implemented.

#### **CHALLENGES, ISSUES and OPPORTUNITIES**

As the fiscal year opened in 2020 the Covid-19 pandemic was surging, and the Public Health staff was completely immersed in the response. Moving into this fiscal year we have created a fulltime Covid -19 response team funded by the ELC grants. This team consists of a Deputy Director of Covid-19, an Infection Preventionist registered nurse, two contact tracing and investigation staff, and two Latino outreach specialists. This team with assistance of state and contracted resources will facilitate Mono County's Covid-19 response. Having the Covid-19 response team in place will enable Public Health staff to return to our core services for the general public. Public Health has added a Nurse Practitioner to our staff and will investigate providing expanded services for our most at risk members of our County. While regular Public Health staff will continue to assist in the Covid-19 response it will be limited to a as needed basis unless circumstances warrant a higher level of involvement. Public Health will strive to serve our community to the best of our ability.

#### **CORE SERVICE AND PROGRAM DESCRIPTION**

##### **PUBLIC HEALTH (Fund 130)**

Children's Medical Services (CMS): provides a comprehensive system of health care for children through preventive screening, diagnostic, treatment, rehabilitation, and follow-up services for targeted populations.  
Communicable Disease Control: works to promptly identify, prevent and control infectious diseases that pose a threat to public health, including infectious diseases, vaccine-preventable agents, bacterial toxins, and pandemics.

HIV/AIDS/STD Programs: provides access to comprehensive prevention, diagnosis and treatment services for sexually transmitted diseases and HIV.T

Immunization Program: protects the population against vaccine-preventable diseases.

Maternal, Child, & Adolescent Health (MCAH): promotes healthy living, reproductive health, family planning, and access to prenatal care for mothers and their families.

Woman, Infant, and Child (WIC) Program: helps income eligible families by providing nutrition education, breastfeeding support, vouchers for healthy foods, and referrals to healthcare and other community services.

##### **HEALTH EDUCATION (Fund 131)**

Tobacco Education Program: Partners with agencies, organizations, communities, and individuals to collaboratively improve health for Mono County residents and visitors through health promotion outreach to high risk populations, training and technical assistance, tobacco cessation, youth health promotion and

risk prevention, health promotion through media, public health policy development and advocacy, and evaluation of outcomes.

**BIO-TERRORISM (Fund 133)**

Public Health Emergency Preparedness Program: Ensures a coordinated and effective response for the medical and health planning efforts during an emergency or disaster that impacts the health of our community. Works with local stakeholders, including healthcare providers and facilities, community-based organizations, law enforcement, fire personnel, emergency medical services, schools, volunteers, town and county governments, and many other entities.

**PUBLIC HEALTH (FUND 137)**

Environmental Health: Promotes public health and facilitates disease prevention through oversight and guidance in the areas of water quality control, food safety, solid and liquid waste management, air quality control, hazardous materials and waste management, substandard housing mitigation, recreational swimming facilities and vector-borne disease surveillance.

**DEPARTMENTAL ACTION PLAN FOR 2020-2021**

**Covid-19 Response**

County Strategic Focus Area: 1A – Improve emergency operations and response

Primary focus of Public Health Operations for 2021-22. Since the beginning of the global pandemic in March, Public Health has been completely immersed in the containment of COVID-19 and participating in the Mono County Emergency Operations Center. Serving our community in all areas such as epidemiology, contact tracing and quarantine, 211 Nurse Hotline, extensive community testing and vaccination of the county, 100% of staff has participated either fully or as needed. Fiscal Year 21-22 appears to be an improving battle with hope of controlling community spread, hospitalizations and deaths, as well as the economic collapse of our region. Meanwhile, day to day public health programs continue to need attention and support, particularly those that serve the public. Flu clinics and Covid-19 vaccination clinics will continue to be important this year.

Target completion: unknown

**Review & Implement EH Fee Study**

County Strategic Focus Area: 3D – Adopt, implement, and monitor fiscal resiliency principles

Complete a fee assessment to collect appropriate level of fees for services provided.

Target completion: TBD

**Naloxone Training and Distribution**

County Strategic Focus Area: 1B – Address opioid crisis and substance abuse

Continue training and distribution of Naloxone through partnering agencies to community members to reduce the incidence of overdose and death related to opioid use.

Target completion: ongoing through 21-22

**County-wide Syringe Exchange Program**

County Strategic Focus Area: 1B – Address opioid crisis and substance abuse

In conjunction with Behavioral Health, apply for, develop, and implement a county-wide syringe exchange program to reduce the transmission of blood borne pathogens and link clients to harm reduction services for substance use treatment and prevention.

Target completion: by 21-22 fiscal year end

**Annual Health Department Update**

County Strategic Focus Area: 4B – Improve operational efficiency and increase customer service and transparency. Develop and distribute an Annual Health Department Update with 21-22 highlights to increase public awareness and transparency regarding services and work.

Target completion: To be presented during Public Health Week (1<sup>st</sup> week of April 2022)

# Public Health

## 10 Essential Public Health Services

		Mandated?	
1	Monitor Health	Conduct community health needs assessments	Y
		Determine health service needs and gaps in care	Y
		Identify social and environmental threats to the health of the community	Y
		Identify community assets and resources	Y

		Mandated?	
2	Diagnose & Investigate	Provide access to Public Health Labs	Y
		Infectious disease surveillance, investigation, and response to outbreaks	Y
		Plan for and respond to public health emergencies	Y
		Investigate foodborne outbreaks	Y

3	Inform, Educate, Empower	Provide health promotion activities including flu clinics and smoking cessation support.	Y
		Collaborate on health education efforts with schools and local agencies	Y
		Send MonoGrams to inform the community about seasonal and ongoing public health issues	Y
		Provide accessible, bilingual, health information and resources via multiple media outlets	Y

4	Mobilize Community Partnerships	Build coalitions to bring together resources from the whole community	Y
		Health improvement planning efforts, programs, and projects	Y
		Convene partners to develop a community health improvement plan	Y
		Develop MOUs with other organizations to improve continuity of care	Y

5	Develop Policies	Develop and track measurable objectives	Y
		Foster leadership at all levels	Y
		Develop policies and ordinances to improve public health	Y
		Advocate for legislation that supports public health and funding	Y

6	Enforce Laws	Enforce sanitation codes	Y
		Protect drinking water supplies	Y
		Conduct timely inspections and response to complaints	Y
		Follow up on hazardous environmental exposures	Y

7	Link to Services	Provide outreach and education for special populations	Y
		Provide culturally appropriate communication and materials	Y
		Refer and provide warm-hand offs to health & human services	Y
		Distribute mass quantities of antibiotics or vaccines in the event of an outbreak or bioterrorism related attack	Y

8	Assure Competent Workforce	Provide education, training, and evaluation	Y
		Provide monetary support and efficient procedures for license renewal	Y
		Provide public health nursing internships and training programs	Y
		Test emergency response plan during a mock event to evaluate performance.	Y

9	Evaluate	Evaluate effectiveness of public health programs and services	Y
		Allocate resources and reshape programs or organizational structure	Y
		Monitor trends in disease rates to assess effectiveness of disease prevention activities	Y

10	Research	Utilize best practices to guide work	Y
		Link with institutions of higher learning	Y
		Monitor rapidly changing disease prevention and health promotion research	Y

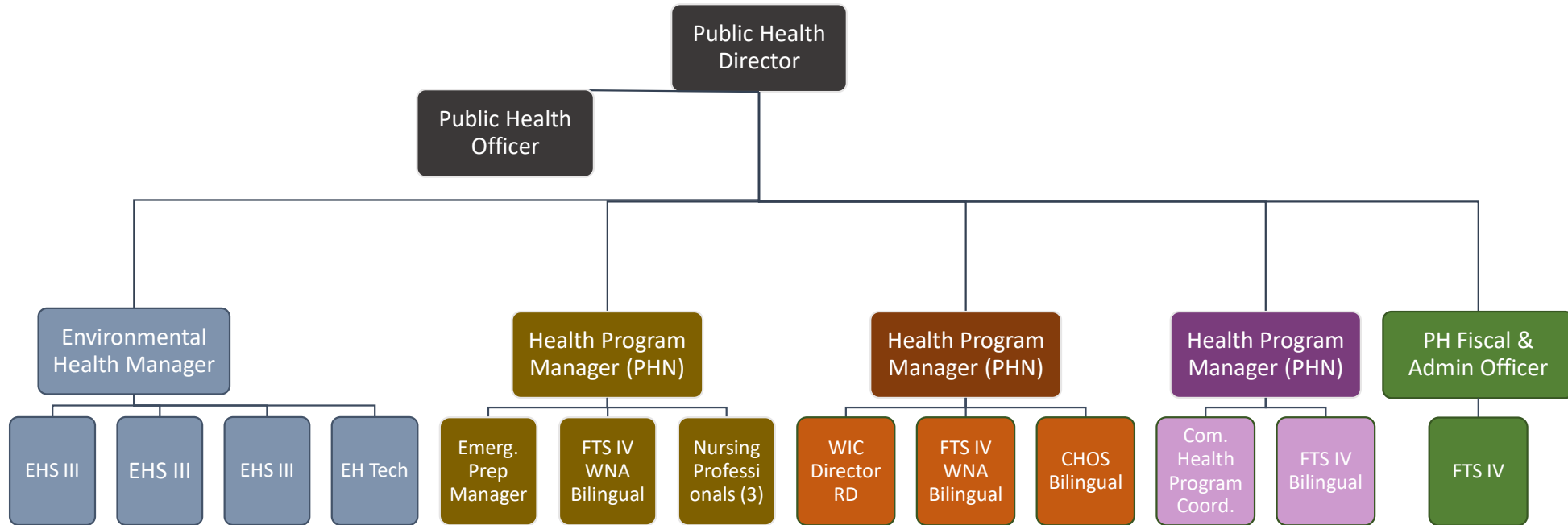
		Monitor trends in risk behaviors to assess effectiveness of health promotion activities	y
--	--	---	---

		Revise practices in order to remain current with recommended practices resulting from evidence based work	Y
--	--	---	---



# PUBLIC HEALTH

## Departmental Organizational Chart

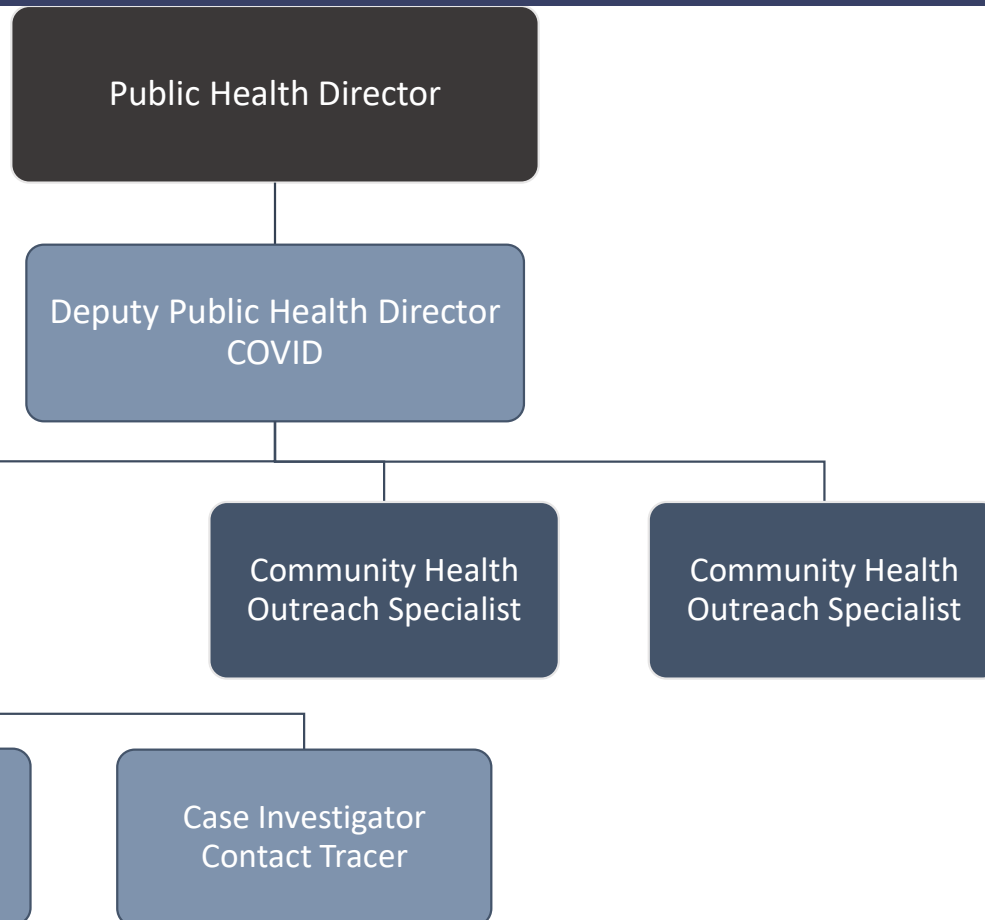


DIVISIONS	ENVIRONMENTAL HEALTH	EMERGENCY PREP & DISEASE PREVENTION	INDIVIDUAL & FAMILY SERVICES	COMMUNITY WELLNESS	FINANCE
-----------	----------------------	-------------------------------------	------------------------------	--------------------	---------



# Public Health

## Departmental Organizational Chart

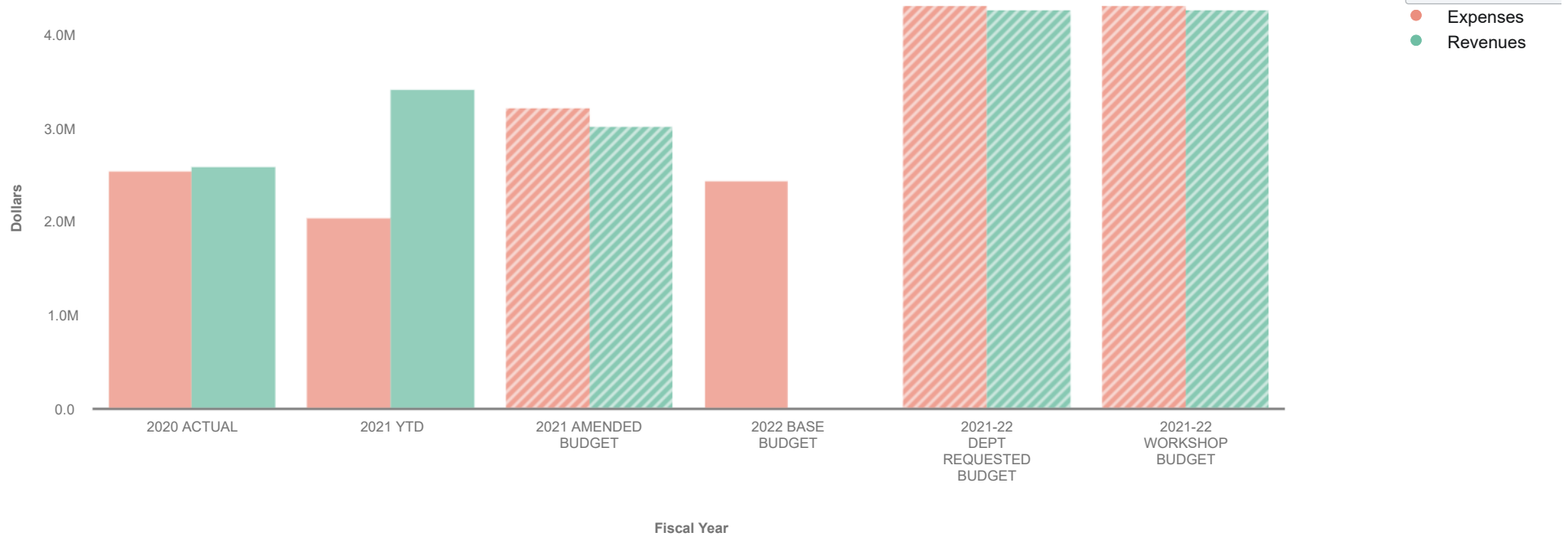


# 0. 2021-22 Recommended Budget

PUBLIC HEALTH 130-41-860



## Visualization



Collapse All	2020 ACTUAL	2021 YTD	2021 AMENDED BUDGET	2022 BASE BUDGET	2021-22 DEPT REQUESTED BUDGET	2021-22 WORKSHOP BUDGET
<b>▼ Revenues</b>	\$ 2,599,684	\$ 3,427,117	\$ 3,036,606	\$ 0	\$ 4,277,019	\$ 4,277,019
▶ Intergovernmental	2,097,896	2,531,796	2,690,905	0	3,983,291	3,983,291
▶ Charges for Services	170,058	884,221	202,189	0	158,434	158,434
▶ Miscellaneous Revenues	1,016	586	108,342	0	108,342	108,342
▶ Licenses, Permits & Franchises	298,721	227	0	0	0	0
▶ Transfers In	17,023	0	27,670	0	19,452	19,452
▶ Interest & Rents	13,818	9,989	7,000	0	7,000	7,000
▶ Fines, Forfeitures & Penalties	1,152	299	500	0	500	500
<b>▼ Expenses</b>	2,558,099	2,047,455	3,233,220	2,448,508	4,313,536	4,313,536
▶ Salaries & Benefits	1,636,531	1,297,669	1,687,564	2,058,842	2,301,037	2,301,037
▶ Services and Supplies	836,571	743,022	753,919	389,666	1,064,615	1,064,615
▶ Transfers Out	84,998	0	791,737	0	832,884	832,884
▶ Capital Outlay	0	6,764	0	0	115,000	115,000

<b>Collapse All</b>	<b>2020 ACTUAL</b>	<b>2021 YTD</b>	<b>2021 AMENDED BUDGET</b>	<b>2022 BASE BUDGET</b>	<b>2021-22 DEPT REQUESTED BUDGET</b>	<b>2021-22 WORKSHOP BUDGET</b>
<b>Revenues Less Expenses</b>	\$ 41,584	\$ 1,379,663	\$ -196,614	\$ -2,448,508	\$ -36,517	\$ -36,517

Data filtered by Types, PUBLIC HEALTH, HEALTH&SANITATION-HEALTH, PUBLIC HEALTH, No Project and exported on May 10, 2021. Created with OpenGov



# 0. 2021-22 Recommended Budget

2. Public Health Education 131-41-847



## Visualization

Sort **Large to Small**



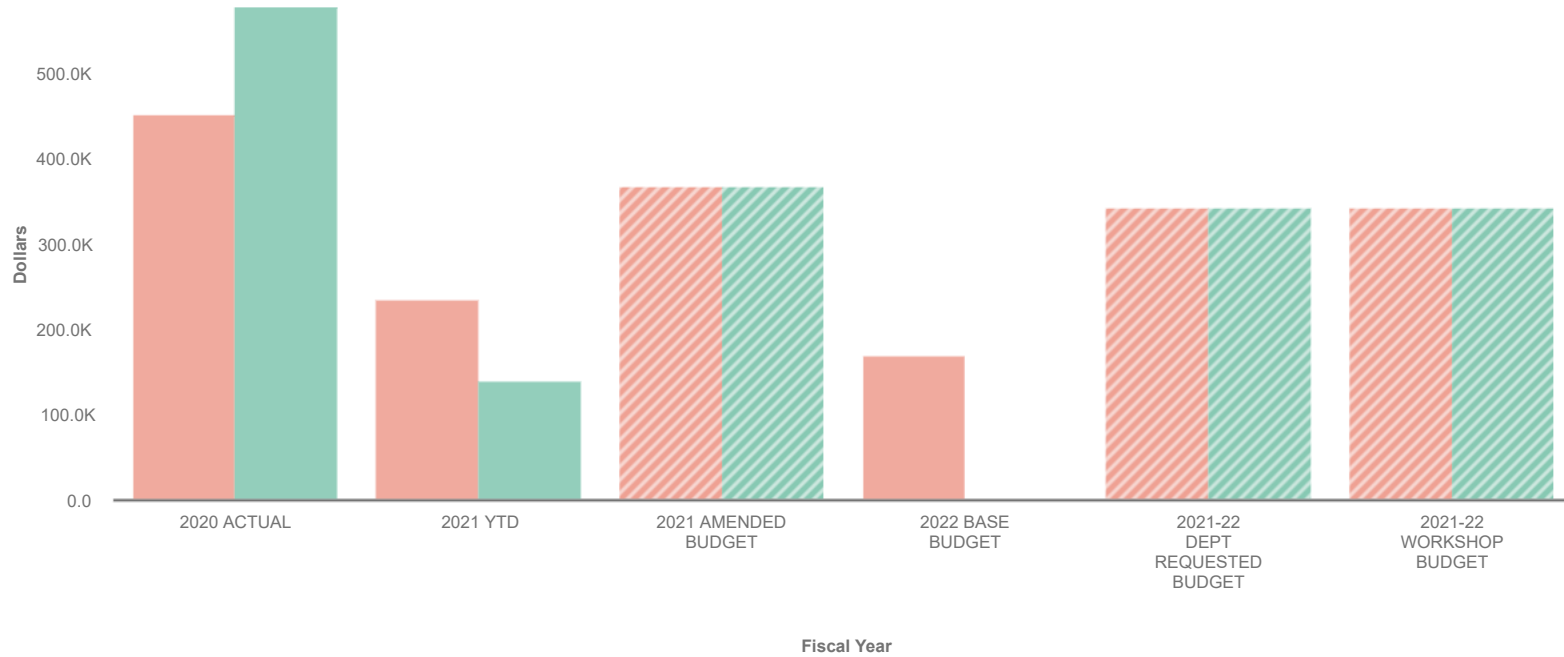
	2020 ACTUAL	2021 YTD	2021 AMENDED BUDGET	2022 BASE BUDGET	2021-22 DEPT REQUESTED BUDGET	2021-22 WORKSHOP BUDGET
<b>Collapse All</b>						
▼ <b>Revenues</b>	\$ 81,105	\$ -4,054	\$ 333,347	\$ 0	\$ 313,829	\$ 313,829
▶ <b>Transfers In</b>	40,239	0	333,347	0	313,829	313,829
▶ <b>Intergovernmental</b>	44,855	0	0	0	0	0
▶ <b>Interest &amp; Rents</b>	-3,989	-4,054	0	0	0	0
▼ <b>Expenses</b>	296,622	184,288	333,347	470,808	313,829	313,829
▶ <b>Salaries &amp; Benefits</b>	179,350	98,689	229,230	448,926	169,687	169,687
▶ <b>Services and Supplies</b>	117,272	85,598	104,117	21,882	144,142	144,142
<b>Revenues Less Expenses</b>	\$ -215,517	\$ -188,342	\$ 0	\$ -470,808	\$ 0	\$ 0

# 0. 2021-22 Recommended Budget

3. Bio-Terrorism 133-41-860



## Visualization



Sort Large to Small

- Expenses
- Revenues

	2020 ACTUAL	2021 YTD	2021 AMENDED BUDGET	2022 BASE BUDGET	2021-22 DEPT REQUESTED BUDGET	2021-22 WORKSHOP BUDGET
<b>Expand All</b>						
▼ <b>Revenues</b>	\$ 579,010	\$ 140,109	\$ 368,931	\$ 0	\$ 345,042	\$ 345,042
▶ <b>Intergovernmental</b>	538,254	141,172	327,393	0	298,921	298,921
▶ <b>Transfers In</b>	44,759	0	41,538	0	46,121	46,121
▶ <b>Interest &amp; Rents</b>	-4,003	-1,063	0	0	0	0
▼ <b>Expenses</b>	453,159	235,824	368,931	171,156	345,042	345,042
▶ <b>Salaries &amp; Benefits</b>	374,466	164,268	241,696	147,657	216,476	216,476
▶ <b>Services and Supplies</b>	78,693	71,556	127,235	23,499	128,566	128,566
<b>Revenues Less Expenses</b>	\$ 125,851	\$ -95,715	\$ 0	\$ -171,156	\$ 0	\$ 0

# 0. 2021-22 Recommended Budget

4. Environmental Health 137-41-862



## Visualization



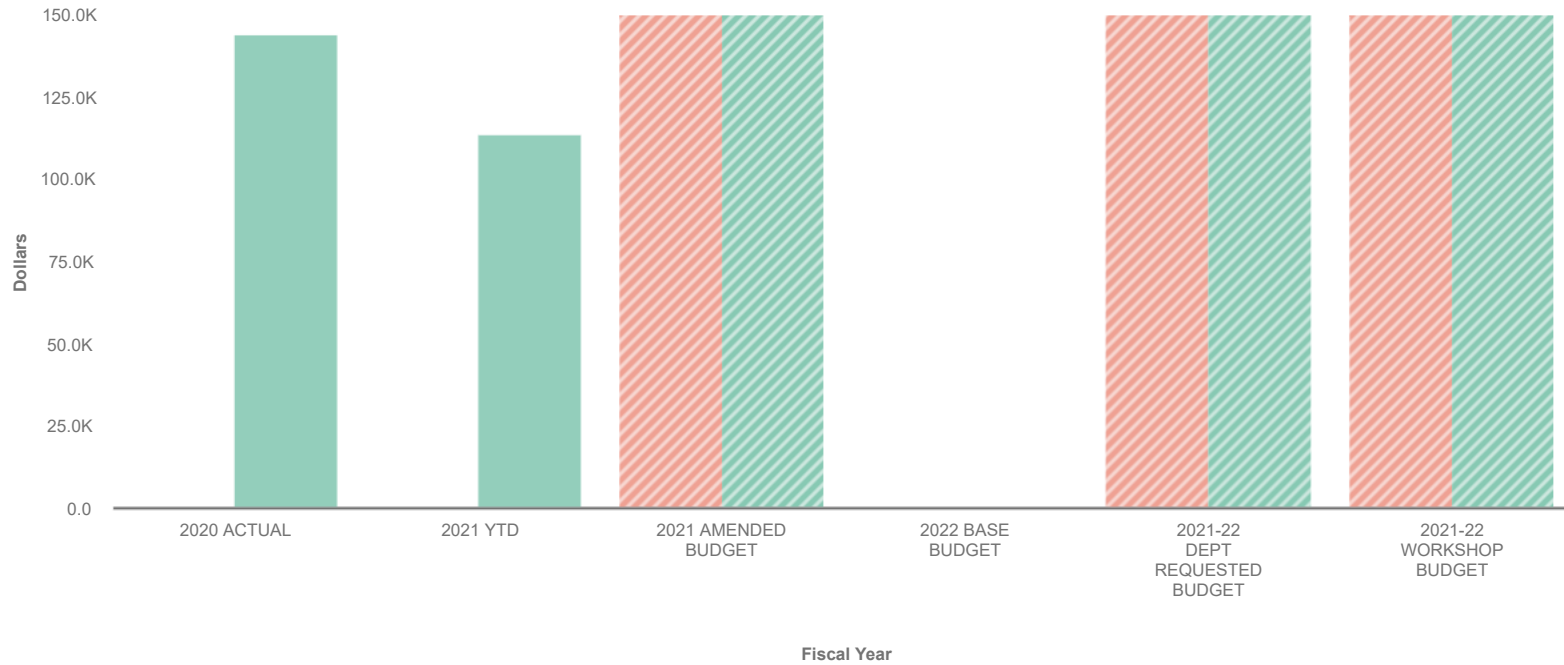
	2020 ACTUAL	2021 YTD	2021 AMENDED BUDGET	2022 BASE BUDGET	2021-22 DEPT REQUESTED BUDGET	2021-22 WORKSHOP BUDGET
<b>Collapse All</b>						
<b>▼ Revenues</b>	\$ 0	\$ 272,769	\$ 1,045,555	\$ 0	\$ 1,094,374	\$ 1,094,374
▶ Transfers In	0	0	716,752	0	763,360	763,360
▶ Licenses, Permits & Franchises	0	273,496	263,003	0	266,821	266,821
▶ Charges for Services	0	0	49,300	0	47,693	47,693
▶ Intergovernmental	0	0	16,500	0	16,500	16,500
▶ Interest & Rents	0	-727	0	0	0	0
<b>▼ Expenses</b>	0	819,468	1,045,555	660,127	1,094,374	1,094,374
▶ Salaries & Benefits	0	507,152	654,930	584,283	726,638	726,638
▶ Services and Supplies	0	312,316	390,625	75,844	367,736	367,736
<b>Revenues Less Expenses</b>	\$ 0	\$ -546,699	\$ 0	\$ -660,127	\$ 0	\$ 0

# 0. 2021-22 Recommended Budget

5. Prop 99 Public Health 135-41-847



## Visualization



Sort Large to Small

- Revenues
- Expenses

	2020 ACTUAL	2021 YTD	2021 AMENDED BUDGET	2022 BASE BUDGET	2021-22 DEPT REQUESTED BUDGET	2021-22 WORKSHOP BUDGET
<b>Collapse All</b>						
<b>▼ Revenues</b>	\$ 144,435	\$ 114,041	\$ 150,000	\$ 0	\$ 150,000	\$ 150,000
▶ Intergovernmental	143,248	112,500	150,000	0	150,000	150,000
▶ Interest & Rents	1,187	1,541	0	0	0	0
<b>▼ Expenses</b>	0	0	150,000	0	150,000	150,000
▶ Transfers Out	0	0	150,000	0	150,000	150,000
<b>Revenues Less Expenses</b>	\$ 144,435	\$ 114,041	\$ 0	\$ 0	\$ 0	\$ 0

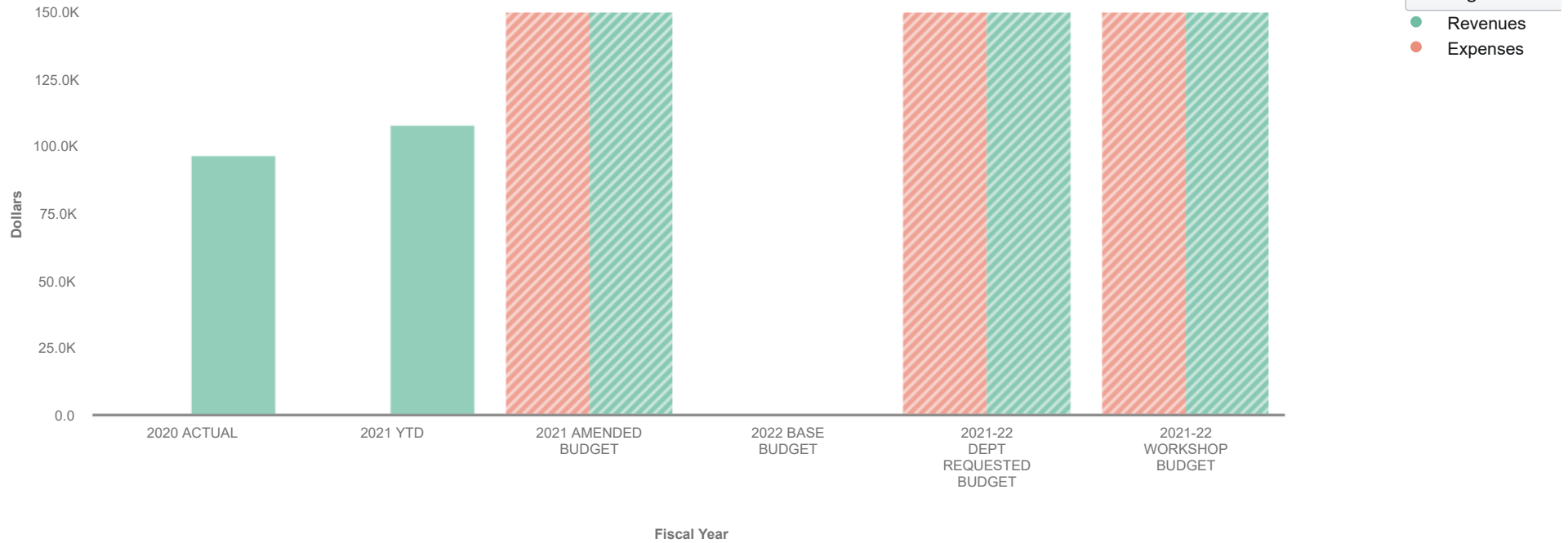
Data filtered by Types, Public Health CTCP Prop 99, HEALTH&SANITATION-HEALTH, HEALTH EDUCATION, No Project and exported on May 10, 2021. Created with OpenGov

# 0. 2021-22 Recommended Budget

6. Prop 56 Health Education 136-41-847



## Visualization



	2020 ACTUAL	2021 YTD	2021 AMENDED BUDGET	2022 BASE BUDGET	2021-22 DEPT REQUESTED BUDGET	2021-22 WORKSHOP BUDGET
<b>Collapse All</b>						
▼ <b>Revenues</b>	\$ 96,936	\$ 108,257	\$ 150,000	\$ 0	\$ 150,000	\$ 150,000
▶ <b>Intergovernmental</b>	95,445	106,812	150,000	0	150,000	150,000
▶ <b>Interest &amp; Rents</b>	1,491	1,445	0	0	0	0
▼ <b>Expenses</b>	0	0	150,000	0	150,000	150,000
▶ <b>Transfers Out</b>	0	0	150,000	0	150,000	150,000
<b>Revenues Less Expenses</b>	\$ 96,936	\$ 108,257	\$ 0	\$ 0	\$ 0	\$ 0

Data filtered by Types, Public Health CTCP Prop 56, HEALTH&SANITATION-HEALTH, HEALTH EDUCATION, No Project and exported on May 10, 2021. Created with OpenGov