

EMERGENCY MEDICAL SERVICES DEPARTMENT 855

DEPARTMENT MISSION STATEMENT

The mission of Mono County Emergency Medical Services is to provide quality services to the County which preserve life, reduce suffering, improve health and promote the safety of citizens and visitors who live, work and play in our County.

DEPARTMENTAL OVERVIEW

Provider of pre-hospital basic and advanced life support treatment and transport to the residents and visitors of Mono County.

CHALLENGES, ISSUES and OPPORTUNITIES

The worldwide COVID-19 pandemic has impacted Mono County EMS in many ways. Our top priority is the health, safety and well-being of our personnel and the communities we serve. Our “normal” operations have changed significantly, as we continue to plan for and respond to this community-wide disease. Personnel Protective Equipment (PPE) is critically important to protect our first responders and we are working hard to ensure we have the needed equipment to keep our first responders safe. We are working to access all forms of federal, regional and local funding sources to help offset the costs of the current pandemic and prepare for future needs.

CORE SERVICE AND PROGRAM DESCRIPTION

- Emergency response, access and treatment: Achieved through a combination of highly trained personnel, quality equipment and mission specific utilization of technology and software to improve patient outcomes.
- Critical care transportation: Ensure the safe transportation of critically ill or injured patients to definitive care facilities when alternative transportations options are unavailable due to inclement weather.
- Ambulance billing: Collection of ambulance transport fees in accordance with the LEMSA (ICEMA) approved fee schedule and Centers for Medicare and Medicaid Services regulations. Ensure adherence to HIPAA and PHI requirements.
- Internal and external training delivery: Ensure that Mono County EMS personnel receive the continuing education hours needed to maintain their EMS certification requirements. Provide outreach EMS education, CPR and EMT level training to the various first responder agencies within Mono County. Administer the Automated External Defibrillator (AED) program within the County.

DEPARTMENTAL ACTION PLAN FOR 2021-2022

In FY2021, Mono County EMS continued to see a decrease in call volume due to the COVID-19 pandemic impact on resident activity, tourist activity and lodging orders. We anticipate an increase in activity this summer.

Goals for FY2022:

- Increase ambulance fee base rate by 20%
- Return to in-person training with fire districts
- Promote Ambulance Subscription Program
- Timely filling of staff vacancies to reduce overtime accumulation

COVID-19 had reduced our community outreach programs due to reduced gathering sizes and the risk of exposure to EMS staff. In 2022, we will safely re-engage with the community on a regular basis. Sustainability, adaptability and revenue enhancement will be the priorities moving forward into FY2022.

EMERGENCY MEDICAL SERVICES

Core Services

		Mandated?
1	LEVEL OF PATIENT CARE/TRANSPORT	Advanced Life Support (ALS)
		N
		Basic Life Support (BLS)
		N
		Intra-Facility Transports
		N
		Critical Care Transports
		N

		Mandated?
2	INSTRUCTION	Firs Aid/CPR
		N
		Pediatric Advanced Life Support
		N
		Advanced Cardiac Life Support
		N
		EMT/Paramedic Level Continuing Education
		N

3	RESCUE	Swift Water First Responder	N
		Ice Rescue Awareness	N
		Low Angle Rope Rescue	N
		Backcountry Access	N

4	AMBULANCE BILLING/REVENUE SERVICES	HIPAA Compliance	Y
		Medical Insurance Billing	N
		Court Ordered Restitution Collection	N
		Maddy Fund Management	N

5	COMMUNITY PROGRAMS	Automated External Defibrillator	N
		Narcan Distribution	N
		Blood Pressure/Wellness Checks	N
		Ambulance Membership	N

6	DIASASTER RESPONSE	All Hazard Incident Manangement Team Member - Incident Command	N
		Medical and Health Operational Area Coordinator - EMS	N
		NIMS Compliance	Y
		COVID-19 Unified Command - Operations	N

7	COVID-19 RESPONSE	Vaccination Administration	N
		Clinic Stand-By	N
		COVID-19 Testing Support	N
		Dedicated COVID-19 Transport Ambulance	N

8			

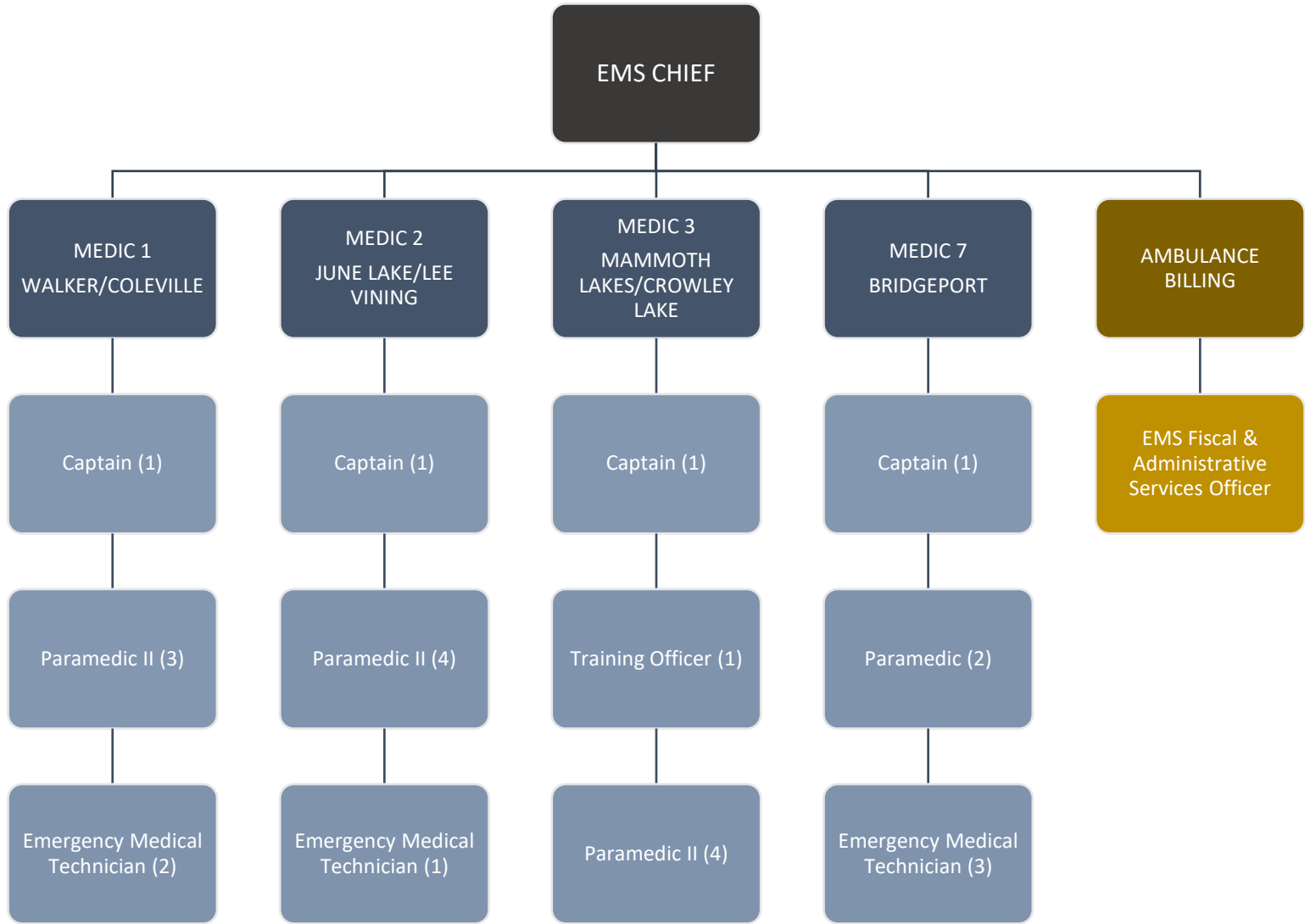
9			

10			



EMERGENCY MEDICAL SERVICES

Departmental Organizational Chart



DIVISIONS

EMERGENCY RESPONSE

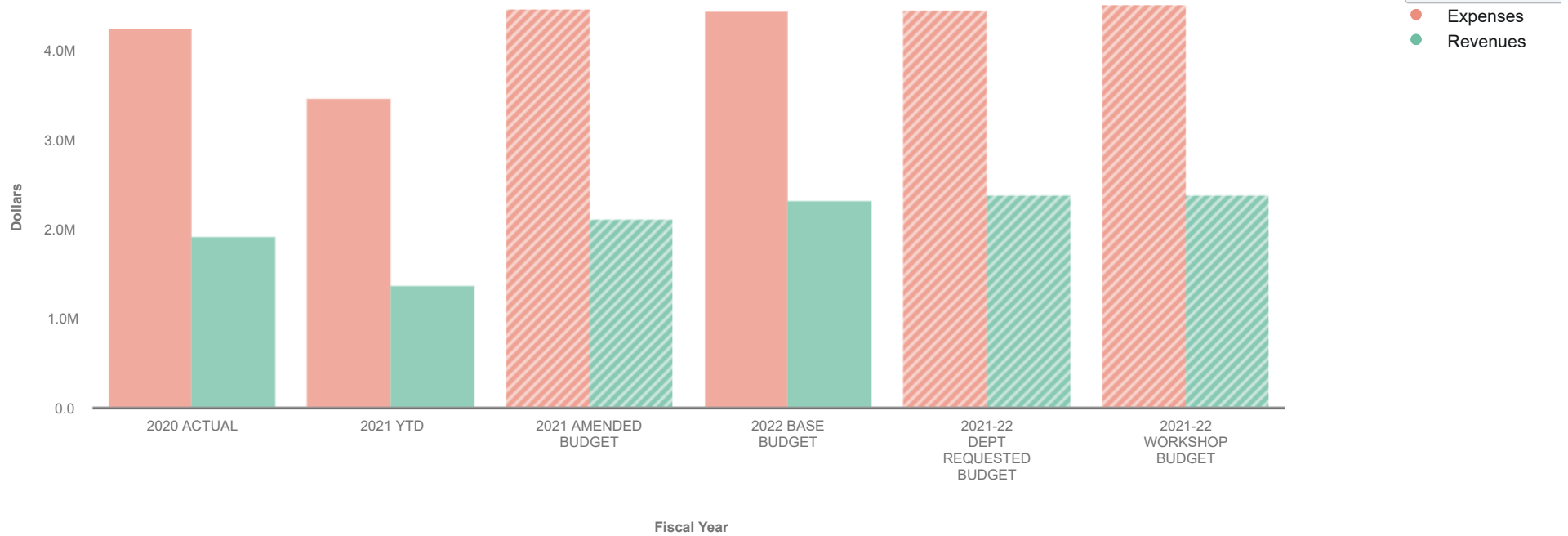
REVENUE SERVICES

0. 2021-22 Recommended Budget

EMERGENCY MEDICAL SERVICES 100-42-855



Visualization



Expand All	2020 ACTUAL	2021 YTD	2021 AMENDED BUDGET	2022 BASE BUDGET	2021-22 DEPT REQUESTED BUDGET	2021-22 WORKSHOP BUDGET
▼ Revenues	\$ 1,920,777	\$ 1,381,217	\$ 2,118,755	\$ 2,326,126	\$ 2,392,126	\$ 2,392,126
► Charges for Services	1,035,067	705,587	1,467,500	1,467,500	1,467,500	1,467,500
► Taxes	520,630	345,296	359,505	561,126	561,126	561,126
► Intergovernmental	365,080	330,334	291,750	297,500	363,500	363,500
▼ Expenses	4,255,717	3,470,607	4,467,701	4,445,952	4,463,222	4,510,308
► Salaries & Benefits	3,432,915	2,885,141	3,690,705	3,543,570	3,898,060	3,945,146
► Services and Supplies	669,600	585,467	776,996	902,382	565,162	565,162
► Transfers Out	153,203	0	0	0	0	0
Revenues Less Expenses	\$ -2,334,941	\$ -2,089,391	\$ -2,348,946	\$ -2,119,826	\$ -2,071,096	\$ -2,118,182

Data filtered by Types, GENERAL FUND, HEALTH&SANITATION-HOSP CARE, PARAMEDIC PROGRAM, No Project and exported on May 10, 2021. Created with OpenGov