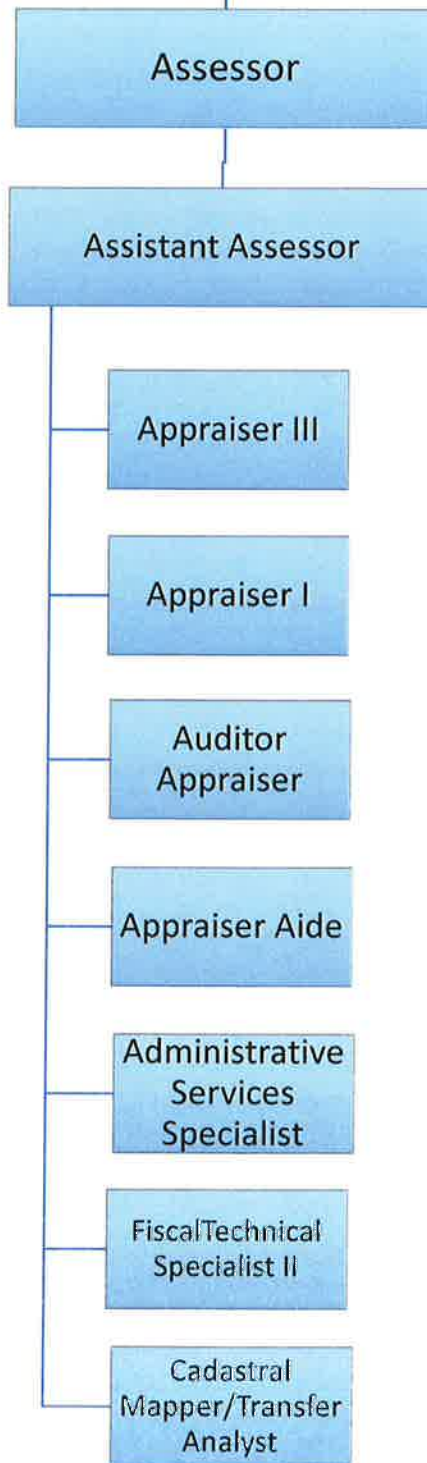
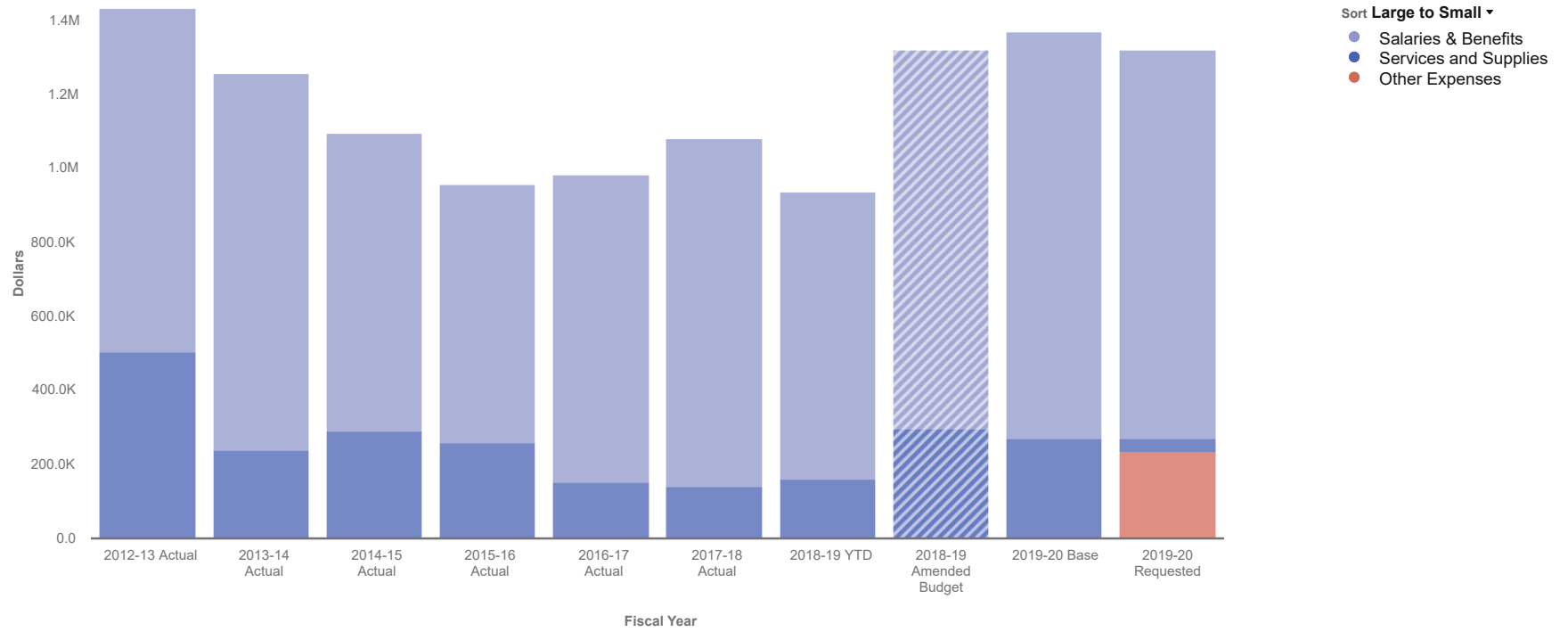


Assessor's Office



Assessor Expenditure Trend

Updated On 13
May, 2019

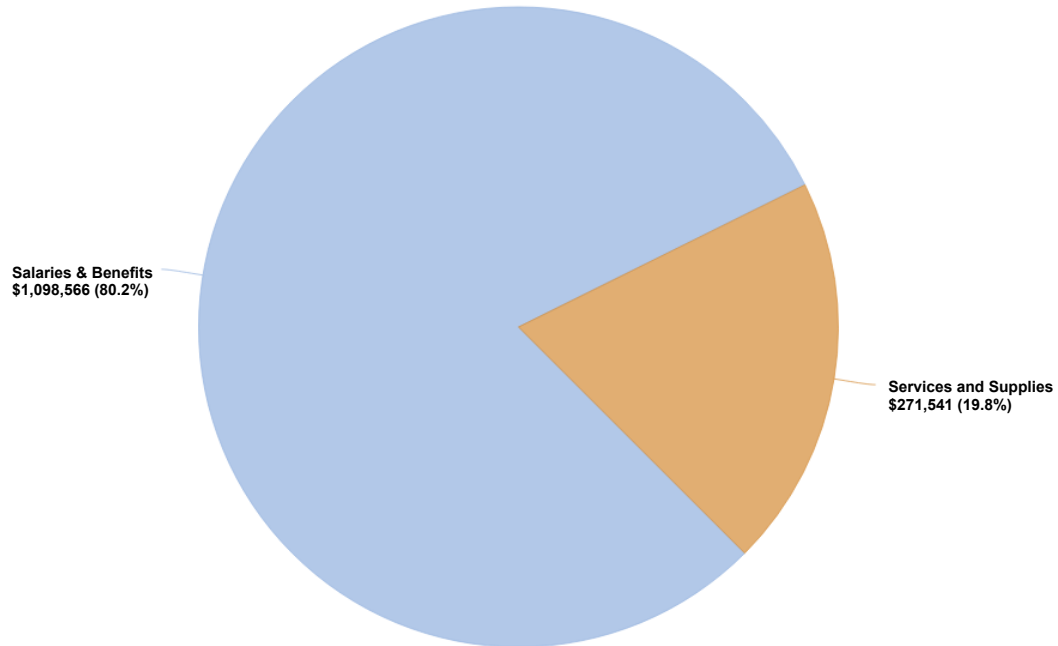


Data filtered by Expenses, ASSESSOR and exported on May 13, 2019. Created with OpenGov

2019-2020 Requested Budget - Expenditures for Assessor

Updated On 13
May, 2019

Sort **Large to Small** ▾
● Salaries & Benefits
● Services and Supplies



Expand All		2019-20 Actual
▶ Salaries & Benefits		\$ 1,098,566
▶ Services and Supplies		271,541
Total		\$ 1,370,107

Data filtered by Expenses, ASSESSOR and exported on May 13, 2019. Created with OpenGov

Reports > **6. Workforce Report (GRID VERSION)**

Filters Views

SHOW ⚙️

TOTAL COMP... ▾

BROKEN DOWN BY ⚙️

Position Name ▾

FILTERED BY All >

Filters 1 >

Columns >

Aggregates >

AMOUNTS

Incremental ▾

TOTAL FOR A YEAR
\$1,098,566.16

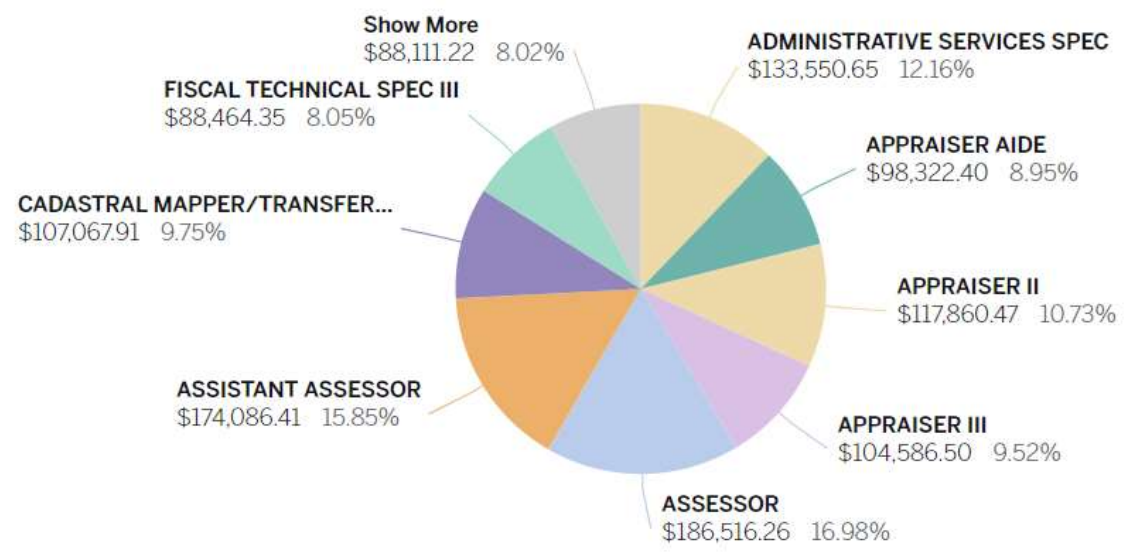
+ Save view

Search in table Search

← Back ↻ Reset { } ASSESSOR ×

Updated On **13 May, 2019**

▼ VISUALIZATION



Records

Assessor's Office Department (Office) 100

Assessor's Office Overview

The county assessor must annually assess all taxable property in the county, except for state-assessed property, to the person owning, claiming, possessing, or controlling the property on January 1. The duties of the county assessor are to discover all assessable property, to inventory and list all taxable property, to develop and maintain a set of current maps delineating property ownership, to value the property, and to enroll the property on the local assessment roll for the support of local government.

Programs and Services

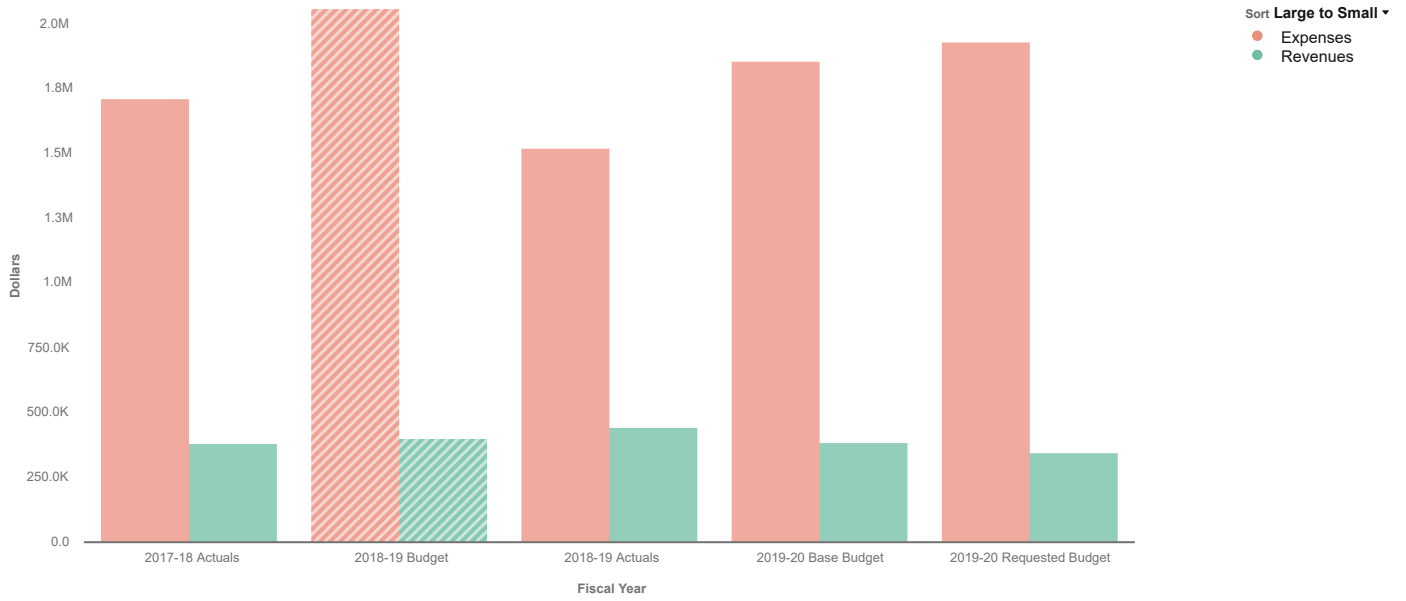
The Assessor's Office prepares the assessment roll each year to be passed on to the Auditor's Office and the Tax Collector's Office.

Describe What is not Included in this Budget

This budget was prepared to be all-inclusive.

Assessor 100-12-100

Updated On 10
May, 2019



Collapse All	2017-18 Actuals	2018-19 Budget	2018-19 Actuals	2019-20 Base Budget	2019-20 Requested Budget
Expenses	\$ 1,709,292	\$ 2,054,074	\$ 1,521,098	\$ 1,853,486	\$ 1,928,912
Salaries & Benefits	1,332,978	1,465,467	1,097,074	1,425,780	1,502,005
Services and Supplies	375,085	573,607	407,745	139,040	426,907
Insurance	160,435	193,010	193,010	76,101	76,101
Services	59,387	185,300	59,431	600	177,150
Supplies	31,220	110,754	98,206	16,795	90,162
Vehicle	63,371	67,043	40,721	45,544	61,544
Facility	51,669	7,500	8,310	0	8,400
Training	9,003	10,000	8,068	0	13,550
Other Expenses	0	0	0	288,666	0
Capital Outlay	1,229	15,000	16,279	0	0
Revenues	382,796	400,063	443,174	385,063	347,000
Charges for Services	363,245	362,063	423,784	362,063	328,000
Prop Tax Admin & Collection Fe	354,063	354,063	416,866	354,063	320,000
Humane Services	9,182	8,000	6,918	8,000	8,000
Licenses, Permits & Franchises	15,470	20,000	14,775	20,000	16,000
Animal Licenses Fees	15,470	20,000	14,775	20,000	16,000
Miscellaneous Revenues	4,081	18,000	4,615	3,000	3,000
Miscellaneous Revenue	3,111	3,000	3,460	3,000	3,000
Special Animal Welfare	0	15,000	0	0	0
Donations & Contributions	970	0	1,155	0	0
Revenues Less Expenses	\$ -1,326,496	\$ -1,654,011	\$ -1,077,923	\$ -1,468,423	\$ -1,581,912

Data filtered by Types, GENERAL FUND, Departments and exported on May 10, 2019. Created with OpenGov