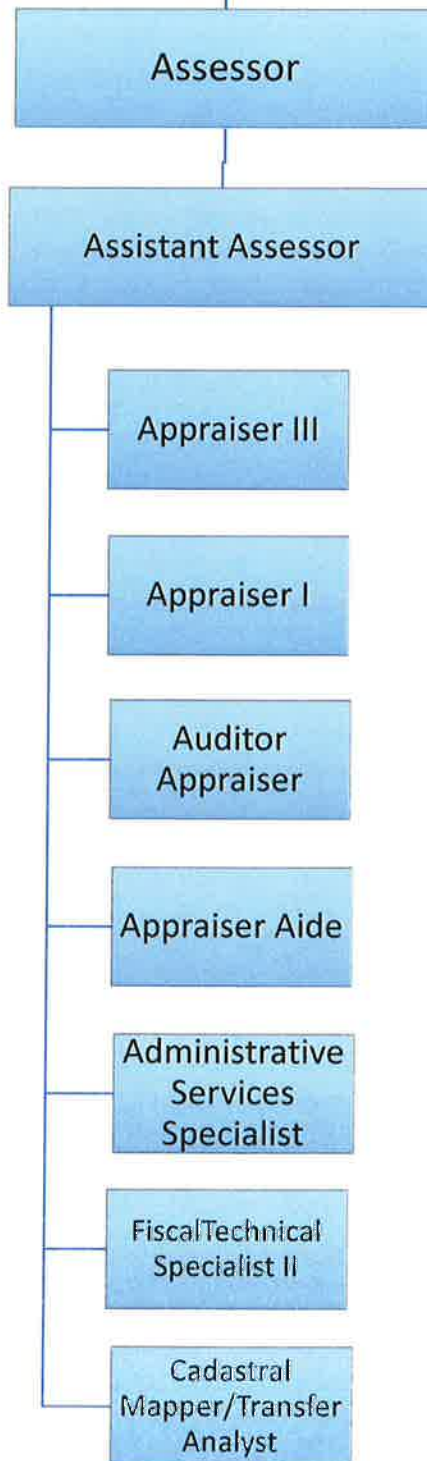


Assessor's Office



Assessor's Office Department (Office) 100

Assessor's Office Overview

The county assessor must annually assess all taxable property in the county, except for state-assessed property, to the person owning, claiming, possessing, or controlling the property on January 1. The duties of the county assessor are to discover all assessable property, to inventory and list all taxable property, to develop and maintain a set of current maps delineating property ownership, to value the property, and to enroll the property on the local assessment roll for the support of local government.

Programs and Services

The Assessor's Office prepares the assessment roll each year to be passed on to the Auditor's Office and the Tax Collector's Office.

Describe What is not Included in this Budget

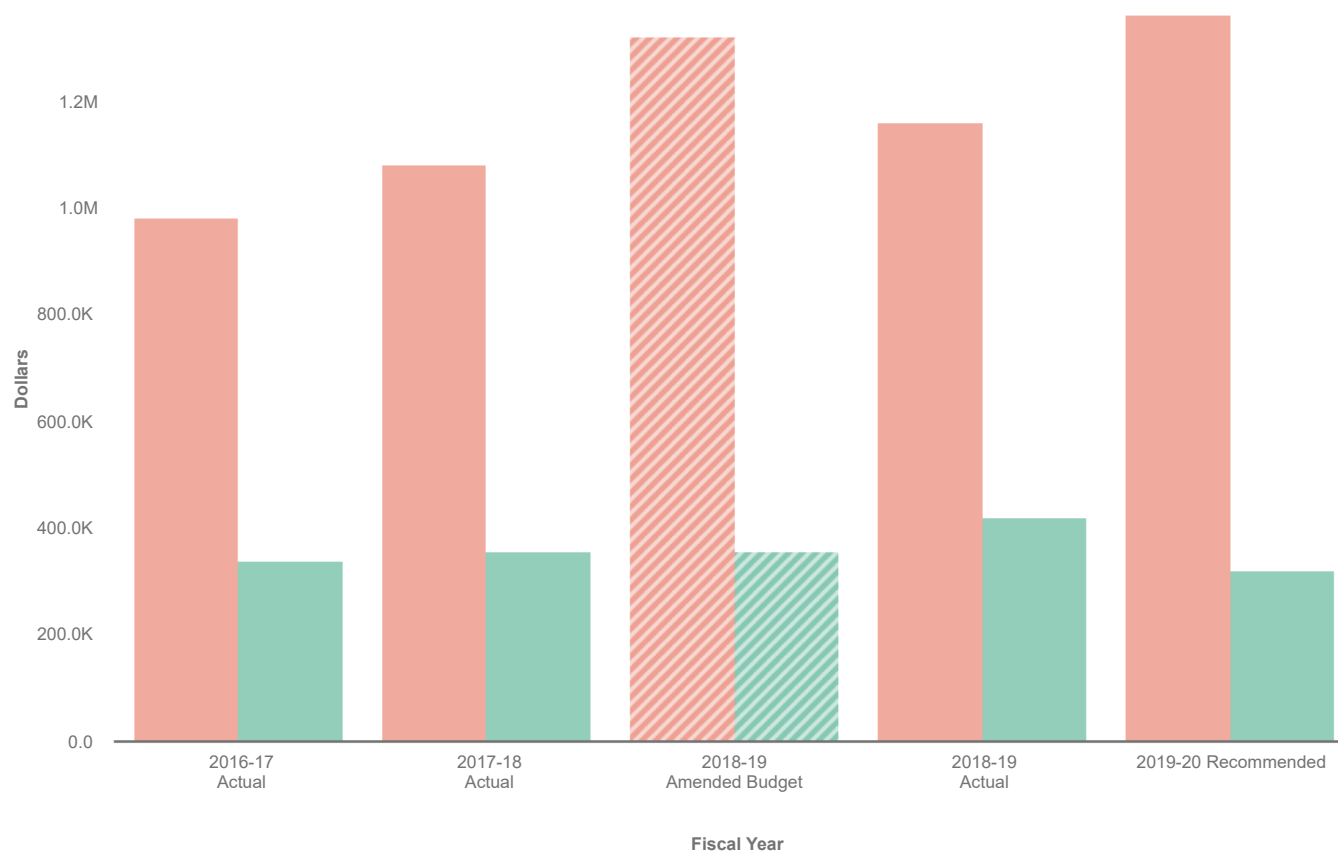
This budget was prepared to be all-inclusive.

Assessor 100-12-100



Sort **Large to Small**

- Expenses
- Revenues



Collapse All	2016-17 Actual	2017-18 Actual	2018-19 Amended Budget	2018-19 Actual	2019-20 Recommended
▼ Revenues	\$ 340,223	\$ 357,174	\$ 357,063	\$ 420,400	\$ 323,000
▶ Charges for Services	337,223	354,063	354,063	416,866	320,000
▶ Miscellaneous Revenues	3,000	3,111	3,000	3,534	3,000
▼ Expenses	983,055	1,082,593	1,322,312	1,161,360	1,361,068
▶ Salaries & Benefits	829,416	940,597	1,024,348	951,016	1,089,527
▶ Services and Supplies	153,638	141,996	297,964	210,344	271,541
Revenues Less Expenses	\$ -642,832	\$ -725,419	\$ -965,249	\$ -740,959	\$ -1,038,068