The background of the slide is a nighttime photograph of a white SUV on a road. The car's headlights and a bright light source in the distance create a starburst effect. The scene is set against a dark blue sky and silhouetted trees.

ANTELOPE VALLEY  
Regional Planning Advisory Committee  
Caltrans District 9  
Walker M4 Safety Project  
November 7<sup>th</sup>, 2024



## What is a Highway Maintenance 4 or HM4 Safety Project?

- HM4 is a safety program that takes advantage of regularly scheduled highway maintenance (like the application of a pavement preservative) to add safety countermeasures,
- Allows districts to implement safety projects more quickly than traditional capital project delivery,
- In Walker, a pavement preservative (looks like tar) will be spread over the highway surface, requiring restriping of highway,
- As such, now is a perfect time to include traffic safety measures in the new restriping plan, as well as new safety signage.



## Walker HM4 Safety Project to include:

- Microsurfacing treatment (a thin, high-tech pavement preservative surface treatment) applied from pavement edge to pavement edge to extend service life of existing pavement,
- Removing and replacing existing stripes and pavement markings with some modifications,
- Installing a Class II bicycle lane with buffer where width allows,
- Replace existing signs with some alterations and additions,
- Add gore-stripped “Islands” to discourage illegal passing.



# Walker – Construction Limits, Bike Lane Types and Select Signs

Extent of Construction.

Extent of Construction.

**Legend**

- 5 Foot Bike Lane
- Bike Lane with 3ft Buffer

SPEED LIMIT 45



NEXT 2 MILES

SPEED LIMIT 45



NEXT 2 MILES

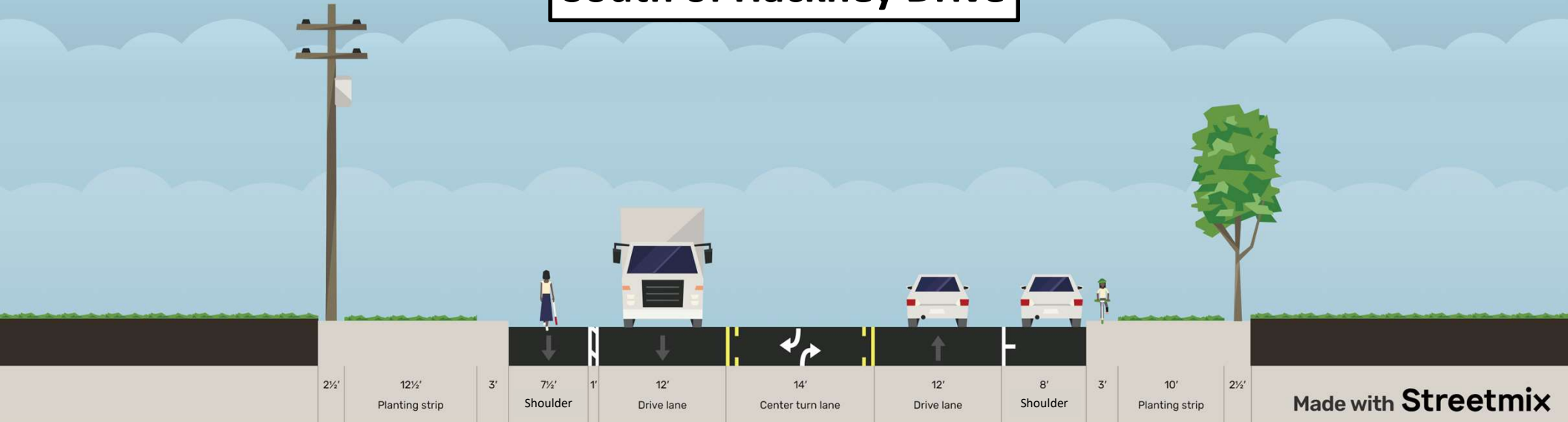


Google



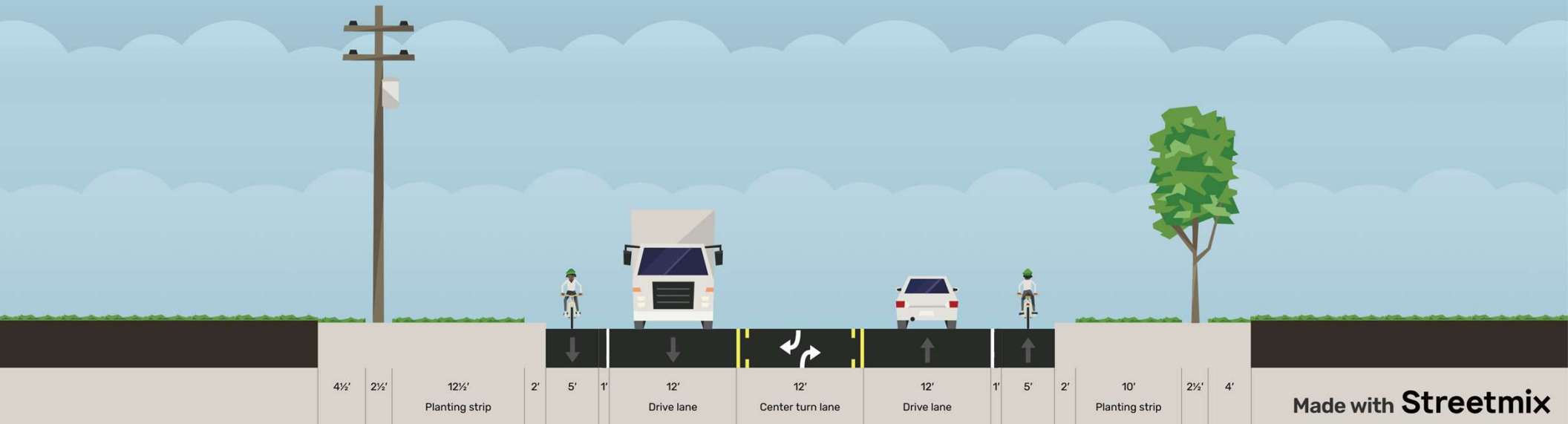
# Walker: US 395 - PM 107.38 - Current Conditions

## South of Hackney Drive

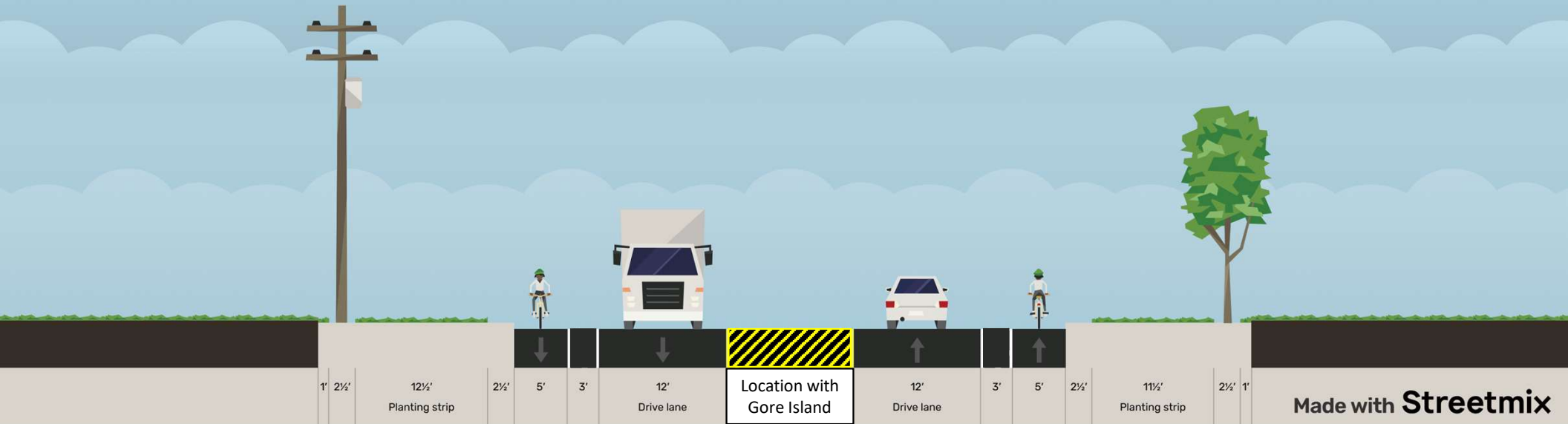




# Walker: Example with Five Foot Bike Lane



# Walker: Example with Five Foot Bike Lane & Buffer



# Possible Locations of Gore-Striped Islands

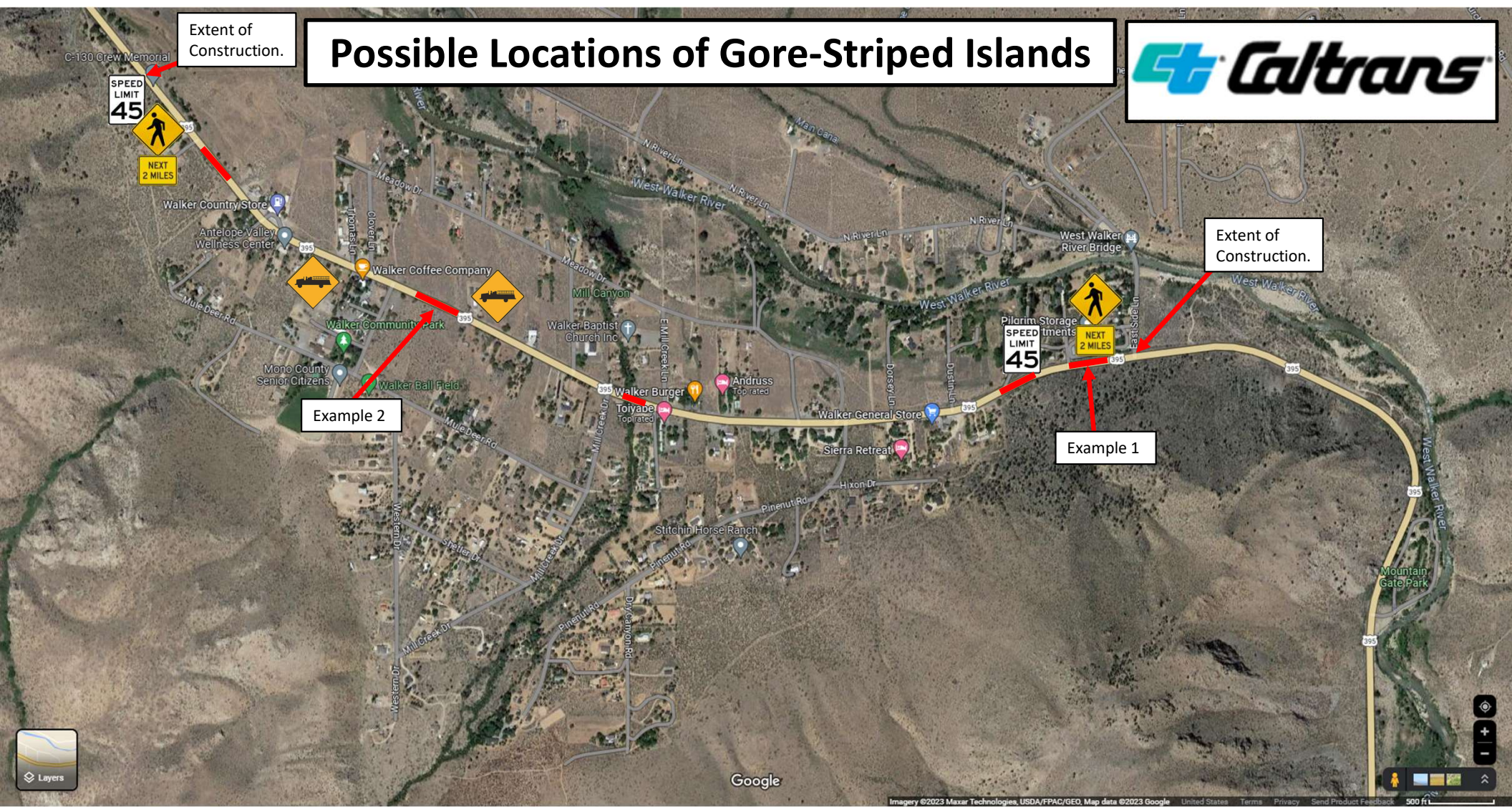


Extent of Construction.

Extent of Construction.

Example 2

Example 1





**Example 1: Proposed Gore Striped TWLTL to Discourage Illegal Passing  
- Not drawn to engineering specifications -**



East Side Drive

Extent of Construction.

395

395

Google



**Example 2: Proposed Gore Striped TWLTL to Discourage Illegal Passing  
- Not drawn to engineering specifications -**

