



Mono County

2017 State and Federal Legislative Platform



Reviewed and adopted by the Mono County Board of Supervisors

February 14, 2017

C O U N T Y

Mono County Board of Supervisors

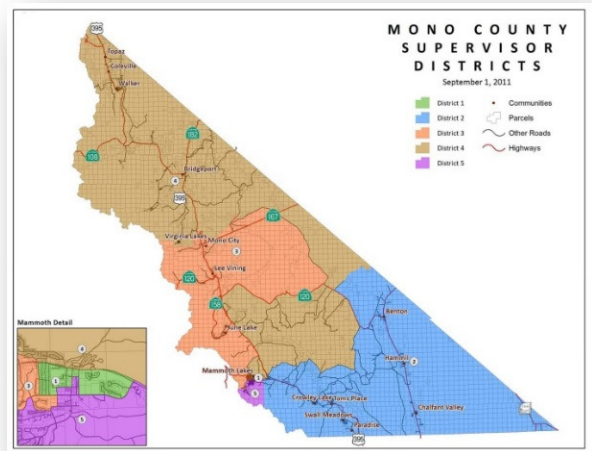
Larry Johnston District 1

Fred Stump District 2

Bob Gardner District 3

John Peters District 4

Stacy Corless District 5



Leslie L. Chapman
County Administrative Officer
PO Box 696
Bridgeport, CA 93517
Tel: (760) 932-5414
Email: lchapman@mono.ca.gov

Table of Contents

	Page No.
Introduction	4
General Guidelines.....	6
State Priorities.....	7
County Revenue Sources	7
Regulation Relief/Reform	7
Natural Resources, Public Lands & Agriculture	7
Public Safety & Criminal Justice	9
Transportation & Infrastructure	10
Administrative Support & Fiscal Services	10
Health and Human Services	11
Economic Development.....	12
Federal Priorities.....	14
Funding/Program Preservation	14
Natural Resources, Public Lands & Agriculture	15
Public Safety & Criminal Justice	17
Transportation & Infrastructure	17
Health Reform.....	18
Immigration.....	19
County Attractions	20
Elected Officials.....	22

Introduction

Mono County, California, is a rural county situated between the crest of the Sierra Nevada and the California/Nevada border. Accessed by state-designated Scenic Byway US Highway 395 which weaves its way north-south, Mono County is 108 miles in length, and has an average width of only 38 miles. With dramatic mountain boundaries that rise in elevation to over 13,000 feet, the county's diverse landscape includes forests of Jeffrey and Lodgepole pine, juniper and aspen groves, hundreds of lakes, alpine meadows, streams and rivers, and sage-covered high desert. The county has a land area of 3,030 square miles, or just over 2 million acres, 94% of which is publicly owned. Much of the land is contained in the Inyo and Humboldt-Toiyabe National Forests, as well as the John Muir and Ansel Adams Wilderness areas. As a result, Mono County offers vast scenic and recreational resources, and has unsurpassed access to wilderness and outdoor recreation and adventure.



Chris Tinker/Mono County Tourism/ Mono Lake

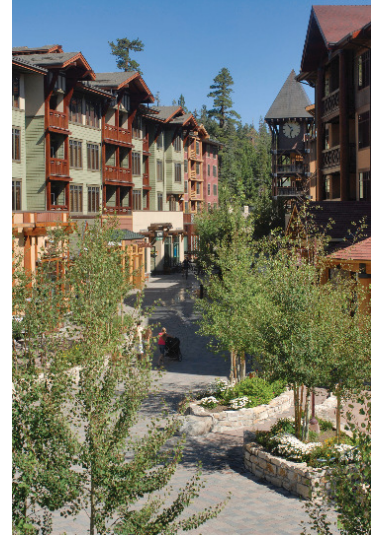
The county is home to, and named after, Mono Lake, which is a large high-desert saline lake with intriguing limestone tufa formations, and is a vital habitat for millions of migratory and nesting birds. Mono Lake is just one of the reasons that Mono County draws landscape photographers year-round. Another highlight is the historic gold rush town of Bodie, which during its heyday in the late 1800s, was home to as many as 10,000 people, and is now

maintained as a State Historic Park with about 200 buildings still standing as they were left, preserved in "arrested decay" for visitors to enjoy. Other natural wonders that attract people to Mono County include Devils Postpile National Monument, one of the world's finest examples of columnar basalt, and the headwaters of the Owens and Middle Fork San Joaquin Rivers, two of the state's most important watersheds. Yosemite National Park's eastern entrance at Tioga Pass is only 12 miles from Lee Vining and Mono Lake.



Alekos McKee/Mono County Tourism/ Bodie

Mono County has several small towns and charming villages, each with its own scenic beauty, year-round recreational opportunities, natural and historical attractions, and unique characteristics. The County seat is proudly located in Bridgeport, where the original 1881 courthouse is the second oldest in the state to be in continuous use. The only incorporated town in the county is Mammoth Lakes, which is located at the base of world-renowned Mammoth Mountain Ski Area, with a summit of 11,053 feet, over 3500 skiable acres, 28 lifts, and an average of 400 inches of snowfall annually. January 2017 recorded historic amounts of snow, with 20.5 feet accumulating in Mammoth during that month alone. Approximately 7,500 people reside in the Mammoth Lakes area year-round, but during the peak winter season, the population swells to over 35,000 when visitors from around the state, country, and world come to ski, snowboard, and take part in many other winter activities. The sister resort, June Mountain, just 20 miles north of Mammoth, offers uncrowded, wide-open slopes and a more peaceful, family-friendly alternative to busier ski areas.



Mammoth Mountain Ski Area

Summer, however, is when Mono County really shines. The region offers countless miles of alpine hiking, superb trout fishing at dozens of well-stocked lakes, streams and rivers, kayaking, cycling, horseback riding, golfing, and endless warm-weather adventures. Photographers flock to the county in September and October when it is almost impossible to take a bad photo of the fall color that lights up the Eastern Sierra landscape. *Sunset Magazine* named Mono County one of the “Top 5 places to Hike” in autumn and *TravelAndLeisure.com* listed Mono County as one of “America’s Best Fall Color Drives.” A wide variety of lodging, restaurants, and shops are available throughout the county, and commercial air service to Mammoth Yosemite Airport, just a 10-minute drive from the Town of Mammoth Lakes, is accessible from Los Angeles, San Francisco, and San Diego on Alaska and United Airlines throughout the winter, and from Los Angeles in summer and fall.



Alicia Vennos/Mono County

State and Federal General Guidelines

The Mono County Board of Supervisors supports the general guidelines set forth below. County staff will apply these guidelines in evaluating State and Federal legislation, as well as executive and regulatory actions. It is the Board's objective to implement these guidelines.

To support the County's service to the community, the County should:

- Support legislative and budget efforts that protect and/or enhance local government revenues, maximize the County's access to state and federal funding sources, and/or increase local funding flexibility;
- Oppose any effort to balance the State budget through the taking of local government resources;
- Support legislation that protects the County's quality of life and diverse natural resources, while preserving the essence and history of the County;
- Support legislation that provides tax and funding formulas for the equitable distribution of state and federal monies while opposing attempts to decrease, restrict, or eliminate County revenue sources;
- Support legislation and budget action which provides additional and continuing funding for local road infrastructure, including complete street features;
- Oppose legislative and administrative actions which would create federal unfunded mandates and/or preempt local decision making authority;
- Support legislation that realigns governmental services in such a manner as to improve the delivery of services and make government more accountable to the people;
- Support the promotion of tourism, filming, and a diversified local economy in the Eastern Sierra to achieve strong economic growth and prosperity;
- Continue to support legislation that honors our veterans for their service to our country;
- Support efforts that further the strategic directions outlined in the County's Strategic Plan; and
- Engage on any proposals to repeal or alter the Affordable Care Act (ACA), which provides Mono County citizens the ability to obtain affordable health care.

State Priorities

1. **Protect County revenue sources** – Many County programs are at risk due to the instability of State and Federal funding. The Board of Supervisors supports efforts to sustain funding enabling continuation of critical programs for Mono County’s constituents.

2. **Encourage regulation relief/reform** – Mono County applauds California’s efforts to protect the environment, the Board supports efforts to achieve responsible regulation relief in the following areas:
 - a. **Provide regulatory relief for solid waste operations** –
 - i. Continue to provide regulatory relief to rural jurisdictions from statewide solid waste and recycling mandates when recycling infrastructure does not yet exist and causes significant transportation costs and emissions.
 - ii. Provide regulatory relief from recycling and diversion mandates for waste that originates on Federal and Los Angeles Department of Water and Power (LADWP) lands. Large-scale projects and activities on those lands can dramatically impact the County’s diversion rate while circumventing the County’s regulatory authority.
 - iii. Provide funding for the siting and development of recycling infrastructure, and/or develop policies within state agencies such as Caltrans for the re-use of materials (glass cullet, wood chips) when generated in rural areas.

 - b. **Support CARB compliance legislation** – Support legislation regarding California Air Resources Board (CARB) compliance to assist rural counties with the costs associated with State mandated compliance.

 - c. **Support environmental processing legislation** – Support legislation that streamlines environmental processing, including the application of certain urban exemptions under the California Environmental Quality Act (CEQA) to rural communities.

3. **Natural Resources, Public Lands and Agriculture**
 - a. **Support sustainable funding for State parks** – Continue to support measures to sustain our State parks, and the roads that access them, for the continued enjoyment of visitors and residents. Closure or underfunding of these parks would result in a significant negative economic impact on our County as tourism is one of our most important economic drivers.

- a. **Protect our communities from forest fires and promote forest health** – Support a balanced approach to fuels management that considers air quality and other health related issues within the Great Basin Unified Air Pollution Control District (GBUAPCD).
- b. **Support removal and utilization of dead and dying trees** – Support state and federal funding, as necessary and appropriate, for the continued removal and utilization of dead and dying trees due to invasive pest infestation consistent with Governor Brown’s October 2015 Emergency Proclamation. The removal of diseased trees is vital for the prevention of severe fire risk conditions, which ultimately protects public health and safety while reducing greenhouse gas emissions from wildfire and preserving the carbon sequestration capabilities of California’s forest lands.
- c. **Ensure full funding of Department of Fish and Wildlife Hatchery and Inland Fisheries Program (AB 7- 2006)** – In 2006, AB 7 dedicated by law one third of all sport fishing license fees to be used for adequate stocking of Department of Fish and Wildlife Hatcheries. Beyond the funding dedication, AB 7 dictated the size of fish to be stocked. Recent DFW actions, as well as state budget actions, have reduced the size of the stocking fish and not fully directed the fee funding to this program. Mono County supports the original intent including all of the funding being directed to the hatchery program and the fish size as described in the original legislation.
- d. **Support sustainable fishing** – Support the funding of efforts to bolster sustainable fishing and other recreational activities, such as education for proper catch and release practices, protecting spawning waterways and the stocking of diploid trout throughout Mono County.
- e. **Support bio-energy action plan development** – We encourage the various state agencies involved to continue evolving this field of work to produce cleaner, more affordable technology based on sustainable and healthy forestry principles in a manner that benefits rural Sierra economies. Mono County has encouraged state agencies, such as the Sierra Nevada Conservancy (SNC) and California Energy Commission (CEC) to provide funding for project scoping and planning.
- f. **Support legislation that promotes, protects, or facilitates the sustainability of our local agriculture** – Mono County agriculture is an important local economic driver. It provides jobs, and contributes to the open-space landscape that draws visitors. Reinstate Williamson Act subventions and continue to develop alternative funding measures, such as the Strategic Growth Council’s Sustainable Agricultural Lands Conservation Program.

- g. **Support legislation and funding that eases the burden of implementing the Sustainable Groundwater Management Act in rural, sparsely populated areas** – The Sustainable Groundwater Management Act provides for local agencies to develop groundwater sustainability plans and, pursuant to those plans, sustainably manage groundwater resources. The funding mechanism for these activities provided in the law is for local agencies to impose fees on water users. Areas subject to the Act in Mono County are sparsely populated and primarily in agricultural production. Accordingly, very few individuals (less than a dozen) would have to bear the significant burden of funding compliance with the Act. This raises real concerns regarding the future of Mono County’s agricultural operations.

4. **Public Safety and Criminal Justice**

- a. **Advocate for local impacts of cannabis legislation** – Advocate for local control, taxation and funding for addressing the environmental, land use, and public safety impacts of the cultivation of cannabis.
- b. **Ensure State realignment & cost-shifts** – Continue to ensure successful implementation of the broad array of programs transferred to county jurisdiction under the 2011 Public Safety Realignment, including appropriate distribution of AB 109 funding. Support state policy changes that will allow for greater administrative and program flexibility for county programs associated with this shift of responsibility.
- c. **Support of rural fire districts** – The population of Mono County is highly rural and dependent upon voluntary associations that provide basic emergency services. These volunteer fire districts provide services to residents and tourists, and they are often the first responders to accidents. Support relief for rural fire districts.
- d. **Advocate for Community Paramedicine** – Advocate for the State Emergency Medical Services Agency (EMSA) to expand the current number of EMS Programs participating in the Community Paramedicine Demonstration Project.
- e. **Support elimination of Juvenile Housing Fees** – Support proposals to eliminate the fee paid by counties to house juveniles at the Division of Juvenile Facilities. The fee is currently \$24,000 per juvenile committed and counties are not funded for this.

5. Transportation and Infrastructure

- a. **Support action for transportation funding** – Urge our legislators to take decisive action to find a long-term solution to California’s transportation funding crisis, including sustainable funding sources for local roads and related infrastructure.
- b. **Support State highway access** – Mono County supports budget policy and legislation to fund rehabilitation of the Bodie Road (Highway 270) that provides access to Bodie State Park and to facilitate early Sierra Pass openings (including Highways 120 and 108).
- c. **Support complete streets and walkable community principles** – Mono County is a strong supporter and advocate of the complete streets and walkable community principles in the 2040 California Transportation Plan. This focus is a transportation paradigm and culture shift that will impact projects from initiation to completion and maintenance. Recently, local jurisdictions have been increasingly tasked with the funding and maintenance of complete street features on state facilities such as state highways. These responsibilities lie with the state, and a corresponding shift in the functioning and funding of Caltrans is needed to ensure success.
- d. **Support broadband deployment through the funding of infrastructure projects and grant programs** – Mono County is a rural California county in which some of our communities and constituents still lack access to high-speed Internet. Although the Digital 395 Project improved the region, Mono County communities and residents still face barriers to connectivity. Having access to state funds is critical as infrastructure projects in much of the area are typically cost prohibitive and do not yield a significant enough return based on the small population.
 - i. Support legislation that provides funding for infrastructure projects and adoption/education efforts.
 - ii. Advocate for programs and efforts that move to improve the accuracy of metrics used to represent the current state of broadband in Mono County. Maintain an internal set of metrics based on best available information and knowledge.
 - iii. Advocate for continued representation through the California Advanced Services Fund and other agencies, as appropriate.

6. Administrative and Fiscal Services

- a. **Support Clerk/Recorder Services and Elections Administration improvements** – Support resources for improving county record keeping services and election administration, and monitor legislation that may impact the following:

- i. Recording fees and process, and recorded documents;
 - ii. Vital statistic fees and process;
 - iii. Public records;
 - iv. Unfunded mandates;
 - v. Vote-by-mail, voter registration, election management systems, elections process, and election equipment;
 - vi. Funding for records preservation (such as Board of Supervisors historic records);
 - vii. Funding for modernization of elections equipment;
- b. **Support Vote-by-mail legislation** – Support legislation to authorize vote-by-mail ballot elections for rural counties.
- c. **Support the full funding of all Payment In Lieu of Taxes (PILT)** – Support legislation and budget efforts that provide for payment of past due balances and continue to maximize the PILT revenue to counties and maintain full funding of PILT without restrictions beyond the current authorization.

7. Health and Human Services

- a. **Ensure State and Federal Healthcare Reform has equitable funding formulas for rural counties** – Affordable Care Act (ACA) implementation began in 2014, and it is vital that local government funding streams reflect equitable distribution formulas to service our rural constituents. Securing adequate funding to sustain health care reform measures is important to Mono County. Key issues include Medi-Cal expansion and funding for these mandates and continuation of 1991 realignment allocation/amounts.
- b. **Support improvements to Medi-Cal** – Support the streamlining of the Medi-Cal administration and improve access to health coverage for uninsured families.
- c. **Support county implementation of the Continuum of Care Reform** – Support adequate funding for county implementation of the Continuum of Care Reform including increased funding for the Foster Parent Recruitment, Retention, and support fund administered through local child welfare services (CWS) agencies that are dedicated to the recruitment, retention, and support of resource families so that they may provide stable, loving homes for children in the foster care system.
- d. **Support Continuum of Care Reform clean-up** – Support legislation to update the Continuum of Care Reform statute to consider the history of prior child abuse in the Resource Family Approval process.

- e. **Support of the Adult Protective Services (APS) program** – Support greater state and federal resources to increase statewide capacity in the Adult Protective Services (APS) program to protect and serve seniors and dependent adults who are victims of abuse and neglect. Specifically, supporting staffing in the California Department of Social Services to provide leadership and support to county APS programs as well as providing additional resources for a statewide training system for APS staff. Resources should also include attending to this vulnerable population victimized by financial abuse, tracking the incidence of elder abuse and neglect to inform policy responses.
- f. **Support State and Federal laws that support affordable housing** and broaden the opportunities for local, non-profit housing entities and instrumentalities of government to increase homeownership. In addition, support increased financing, subsidy options, and tax incentives to support development of new, affordable housing units.
- g. **Support CalFresh application legislation** – Support legislation that would enable county jail inmates to apply for CalFresh prior to release so that benefits can begin upon release, with the goal of easing transitions back to the community and reducing recidivism.
- h. **Support background check legislation** – Support legislation to clarify and simplify the background check and criminal exemption process for individuals and families, including relatives who are going through the Resource Family Approval process to become caregivers for children in foster care.
- i. **Support electronic court reports** – Support legislation to allow court reports to be sent electronically. This would facilitate and improve the successful delivery of court reports to parties who lack a permanent address or who move frequently.

8. Economic Development

- a. **Support local business development** – Maintain and support access to small business capital for local business development through the Small Business Administration, Small Business Development Corporation and other government loan and financial programs.
- b. **Support new and current business development** – Support economic development efforts that augment and promote business retention and

expansion, as well as create an environment conducive to new business attraction.

- c. **Support of commercial filming** – Support efforts to attract and encourage commercial filming opportunities to the region.
- d. **Support tourism economy** – Support efforts to strengthen the tourism economy, particularly in the shoulder season (spring and fall).

Federal Priorities

1. **Support Funding/Program Preservation** – Support legislative, regulatory, and budget efforts that protect and/or enhance local government revenues, maximize the County’s access to federal funding sources, and/or increase local funding flexibility. Oppose legislative and administrative actions that would create federal unfunded mandates and/or preempt local decision making authority.
 - a. **Support full funding of the Secure Rural Schools program** – These funds are critical to Mono County as they provide funding for Mono County Office of Education programs as well as supporting road maintenance to ensure students can get to and from school on County roads.
 - b. **Support the full funding of all Payment in Lieu of Taxes (PILT)** – Support legislation and budget efforts that continue to maximize the PILT revenue to counties and continue full funding of PILT without restrictions beyond the current authorization.
 - c. **Support federal funding for Housing and Economic Development programs** – Support the highest possible funding level for key federal housing and economic development programs, including the Community Development Block Grant (CDBG).
 - d. **Support broadband deployment through the funding of infrastructure projects and grant programs** – Mono County is a rural California county in which some of our communities and constituents still lack access to high-speed Internet. Though improving in the region through the Digital 395 Project, Mono County communities and residents still face barriers to connectivity. Having access to federal funds is critical, as infrastructure projects in much of the area are typically cost prohibitive and do not yield a significant enough return based on the small population.
 - i. Support legislation that provides funding for infrastructure projects and adoption/education efforts.
 - i. Advocate for programs and efforts that move to improve the accuracy of metrics used to represent the current state of broadband in Mono County. Maintain an internal set of metrics based on best available information and knowledge.
 - ii. Support funding for broadband infrastructure development, service delivery, local access and adoption strategies through agencies such as the Federal Communications Commission (FCC).

- e. **Support legislation that promotes, protects, or facilitates the sustainability of our local agriculture** – Mono County agriculture is an important local economic driver, provides jobs, puts food on the table and contributes to the open-space landscape that draws visitors.
 - f. **Support Economic Development resources** –
 - i. Maintain and support access to small business capital for local business development through the Small Business Administration, Small Business Development Corporation and other government loan and financial programs.
 - ii. Support economic development efforts that augment and promote business retention and expansion, as well as create an environment conducive to new business attraction.
 - iii. Support efforts to attract and encourage commercial filming opportunities to the region.
 - iv. Support efforts to strengthen the tourism economy, particularly in the shoulder season (spring and fall).
2. **Natural Resources, Public Lands, and Agriculture** – Support legislation that promotes agriculture and that protects the County’s quality of life, its diverse natural resources, and preserves the essence and history of the County, along with legislation that provides adequate funding for stewardship of our public lands.
- a. **Support sustainable funding for Federal public lands** – Support measures to sustain our federal lands. Closure or underfunding of these lands managed by the US Forest Service, Bureau of Land Management and National Park Service would result in a significant negative impact to our county as tourism and recreation are our economic drivers.
 - b. **Support outdoor recreation economy and public lands** – Support the enacted 2016 Outdoor Recreation and Jobs Act and the effort to measure the outdoor recreation economy’s contribution to the US Gross Domestic Product. Once the federal government fully understands the economic benefits of outdoor recreation, land management agencies and local governments will have necessary data to measure the impact of the recreation economy and the key role that sustainable recreation needs to play in the management decisions of public lands agencies.
 - c. **Support special designations** – Support special use designations for public lands such as National Scenic Areas, Wilderness, National Monuments, National Conservation Areas, when demonstrated conservation values and public support warrant such designations.

- d. **Oppose public lands disposal** – Oppose the large-scale sale, transfer or "disposal" of public lands except for strategic, widely supported transfers or exchanges for management and boundary adjustments with demonstrated public benefit.
- e. **Support wildfire funding and fuels reduction** – Support legislation to change the method of funding wildfire suppression on National Forests by providing access to funding outside of the statutory discretionary limits for emergency purposes and for investment in additional resources for forest management/fuels reduction that addresses California's tree mortality crisis.
- f. **Support public land infrastructure** – Support increased funding for public land management agencies to address deferred maintenance of infrastructure in forests, national parks and reserves that rural counties depend on for tourism and recreation based economies.
- g. **Support land management directives** – Support Mono County's tourism economy by ensuring funding, programs, and management directives for federal land agencies (including the Land & Water Conservation Fund) that facilitate the planning, building, and maintenance of infrastructure for sustainable recreation, travel, and commercial film permitting on public lands.
- h. **Support sustainable fishing** – Support the funding of efforts to bolster sustainable fishing and other recreational activities such as education for proper catch and release practices, protecting spawning waterways and the stocking of diploid trout countywide.
- i. **Support the control of invasive species** – Support control and mitigation for the spread of invasive species to protect, conserve, and restore public and private lands.
- j. **Support biomass project development** – Support legislation that encourages the US Forest Service (USFS) and Bureau of Land Management (BLM) to continue actively promoting and assisting with biomass project development.
- k. **Support Alternative Energy** –
 - i. Support local efforts to develop renewable, distributed energy sources including but not limited to environmentally and appropriately scaled biomass, solar, and wind, while ensuring projects and their supporting infrastructure (i.e. transmission lines, pipes lines, towers, service roads) does not degrade the County's quality of life, natural or visual resources, water or essence and history.

- ii. Continue to support geothermal power production that is environmentally sustainable and doesn't negatively affect local domestic water supplies.
- l. **Support geothermal power** – Continue to support geothermal power production that is environmentally sustainable and doesn't negatively affect local domestic water supplies.
- m. **Support Devils Postpile National Monument legislative requests** – Support legislation to authorize a boundary adjustment request, and to designate a portion of the Middle Fork San Joaquin River as Wild & Scenic, as described in Devils Postpile National Monuments 2015 Management Plan.
- n. **Support endangered species regulation** – Support a balanced approach to the implementation of endangered species regulation with impacts to the rural economy and communities of Mono County. Mono County is fortunate to have a rich natural heritage that should be conserved, and it supports the need to protect and recover imperiled species. These conservation measures must be weighed and balanced against impacts to the fragile tourism-based rural economy and local communities, and every effort must be made to protect private property rights and avoid detrimental impacts to county residents.
- o. **Support sage grouse conservation** – Ensure funding commitments are met and honored by federal agencies, and support continued participation in the collaborative process to address Bi-State Sage Grouse conservation efforts.

3. Public Safety & Criminal Justice

- a. **Support full funding of Byrne Justice Assistance Grants** – Support the preservation of funding levels for existing safety programs such as the Byrne Justice Assistance Grant (Byrne/JAG) Program and oppose efforts to reduce or divert funding away from these programs.

4. Transportation and Infrastructure

- a. **Ensure that federal transportation formulas support rural road infrastructure** – Mono County has concerns regarding the continued implementation of the federal surface transportation reauthorization program. Mono County relies on the network of state highways and locally maintained roads to link residents to essential services. Transportation funding formulas should provide funding protections or guarantees for California's rural transportation system and reflect that rural counties lack viable means to fund larger projects that provide

statewide benefit. We should advocate for formulas that distribute federal funds to support local transportation priorities.

- b. **Support efforts to protect the Highway Trust Fund** and support programs that provide funding for local roads, bridges, and transit initiatives including pedestrian and bicycle systems, and other multi-modal transportation programs.
- c. **Support Federal highway access** – Mono County supports budget policy and legislation that funds infrastructure such as roads on federal land with access to popular destinations including national parks and monuments.
- d. **Support Yosemite Area Regional Transportation funding** – Support efforts to seek sustainable funding for regional public transportation to Yosemite National Park and other public lands destinations.

5. Health Care Reform

- a. **Oppose reduction of benefits of the Affordable Care Act (ACA)** – Oppose efforts to reduce the benefits provided by the Affordable Care Act (ACA) which provides benefits to 22 million Americans nationwide to obtain affordable health care coverage. If the ACA is repealed and not replaced, 15% of Mono County residents who have insurance coverage under the ACA could lose it. This figure also doesn't include those who may have shopped for and secured insurance through the exchange for insurance but didn't receive any subsidy.
- b. **Ensure that Affordable Care Act (ACA) funding is maintained for local governments** – Support the Prevention and Public Health Fund of the ACA, the nation's first dedicated mandatory funding stream for public health and prevention activities, which supports Mono County health care services to underserved residents.
- c. **Support revisions to the Affordable Care Act (ACA)** – Support revisions to the Affordable Care Act (ACA) which would lessen the regulatory requirements imposed on employers.
- d. **Eliminate the Cadillac Tax Element of the ACA** – This tax is 40% over employer provided premiums over \$850 per month for single coverage and \$2,304 for family plans. This tax assumes that more expensive premiums are indicative of luxurious benefits but high premiums can also be indicative of an aging workforce or more risky populations such as law enforcement, which is the case in Mono County.

- e. **Oppose funding reductions for Medicaid** – Oppose efforts to reduce federal funding for Medicaid administration or benefits including converting to a voucher system with less federal funding.
 - f. **Oppose turning Medicaid over to States** – Oppose efforts to turn Medicaid (Medi-Cal in California) over to the states with less federal funding.
 - g. **Support adult and disability services** –
 - i. Support appropriation of \$100 million authorized under the Elder Justice Act to support state and county Adult Protective Services (APS) programs.
 - ii. Support restoration of full funding for the Social Services Block Grant, which in California is used primarily to augment county and state funded in-home supportive services for elderly and disabled persons, and to coordinate services to children with disabilities.
 - h. **Support funding of Veterans benefits** – Support provision and funding for current benefits and health care programs for Veterans.
6. **Immigration** – Oppose immigration reform efforts that would eliminate a pathway to full and equal citizenship, that would restrict the rights of immigrants or break up families, or that would focus on a mass deportation of undocumented immigrants.



MONO COUNTY

CALIFORNIA'S EASTERN SIERRA



Lundy Canyon

HIDDEN TREASURES IN PLAIN SIGHT

MONO COUNTY is a land of dramatic mountain backdrops, high plains, and countless clear lakes, streams, and rivers. Over 3,000 square miles in size, Mono County is well-known for its vast scenic and recreational resources. Much of this land is contained in the Inyo and Toiyabe National Forests, and the Ansel Adams, John Muir, and Hoover wilderness areas. Access to hiking, fishing, biking, skiing, horseback riding, fall colors, uncrowded campgrounds, amazing music festivals, and much more is found just off of scenic US 395, which stretches the length of the county, 120 spectacular miles from Bishop, California, to the Nevada border.

TOP ATTRACTIONS

YOSEMITE NATIONAL PARK – Drive California's highest pass – just 12 miles from Lee Vining to Yosemite's east entrance – to witness ten-story waterfalls, enjoy world-class rock climbing and hiking, and more (summer only).

Contact: www.nps.gov/yose or 209-372-0200. For bus service: www.Yarts.com.

BODIE STATE HISTORIC PARK – Bodie is preserved in a state of "arrested-decay," so keep an eye out for spirits roaming the once-wild streets of this genuine gold-mining ghost town.

Contact: www.parks.ca.gov or www.BodieFoundation.org or 760-647-6445.

MONO LAKE – Paddle a canoe around volcanic islands (don't worry, they're dormant!) and tufa towers, which are natural limestone formations created by the ancient lake's salinity.

Learn more at Mono Basin Scenic Area Visitor Center, 760-647-3044, or the Mono Lake Committee, www.MonoLake.org or 760-647-6595.

DEVILS POSTPILE NATIONAL MONUMENT – Located near Mammoth Lakes, Devils Postpile is the world's finest example of columnar basalt formations: 760-924-5500.

Mono County Tourism

Alicia Vennos

avennos@mono.ca.gov

1-800-845-7922

760-924-1743 Office

East River PR

Katie Shaffer

katie@eastriverpr.com

530-214-8790 Office

530-559-5330 Cell

MONO COUNTY

Towns **AND** Communities

BENTON HOT SPRINGS — Soak in natural hot springs that are temperature regulated in this historic stagecoach station.

BRIDGEPORT — Home of the county seat, the classic whitewashed wooden courthouse has been in use since 1880. Just outside of Bridgeport, Twin Lakes, Virginia Lakes and Bridgeport Reservoir offer fishing and hiking all summer long.

CONVICT LAKE / McGEE CREEK — Dramatically situated under towering Mt. Morrison, Convict Lake is loved by anglers, hikers, and wedding parties! Catch wildflowers or fall colors at McGee Creek Canyon.

CROWLEY LAKE — Fishing season opener's home base, this expansive lake offers world-class trout fishing.

JUNE LAKE — Tucked away at the base of 10,909-ft Carson Peak, June Lake is a scenic mountain hideaway. Well known for trout fishing and brilliant fall colors, the June Lake Loop is a snowy retreat in winter. June Mountain Ski Area offers free lift tickets all winter for kids age 12 and under.

LEE VINING — Overlooking dramatic Mono Lake, Lee Vining is the gateway town to Yosemite National Park – just 12 breathtaking miles up Tioga Pass Road.

MAMMOTH LAKES — Mammoth Mountain Ski Area consistently ranks as one of the top winter sports destinations in North America. In the town of Mammoth Lakes, you'll find quaint shops, gourmet restaurants and accommodations from cozy cabins to four-star luxury hotels.

ROCK CREEK / TOM'S PLACE — Famous for the beautiful Little Lakes Valley hiking trail, fall colors, and home-made pie.

TOPAZ — Home to Topaz Lake, which boasts a nine month fishing season (and big cash derby!), and a Nevada casino.

WALKER AND COLEVILLE — Ranch towns in the northern part of Mono County, Walker and Coleville host California's only ATV/UTV Jamboree!

GETTING TO CALIFORNIA'S EASTERN SIERRA

FLY TO THE EASTERN SIERRA!

Daily air service to Mammoth Yosemite Airport (MMH) is available on Alaska Airlines, United Airlines and/or JetSuiteX from Los Angeles, Burbank, San Diego and San Francisco.



DRIVE

Mono County is within a scenic 5-7 hour drive from Los Angeles, San Francisco and Las Vegas. Northern Mono County is only 1.5 hours from Reno/Tahoe International Airport.

DRIVING DISTANCES AND TIMES

Reno	2.5 hours	140 miles / 225 km
San Francisco	5.5 hours	250 miles / 402 km
Los Angeles	5.5 hours	330 miles / 531 km
Sacramento	4 hours	220 miles / 354 km
Las Vegas	5.5 hours	340 miles / 547 km
Yosemite Valley	2 hours	75 miles / 121 km

All mileage and times are from Lee Vining, CA



VISITOR AMENITIES

LODGING — With more than 140 hotels, motels, bed & breakfast inns, cabins and campgrounds, Mono County has a diverse lodging base – truly everything from deluxe spa hotels to rustic cottages and scenic RV parks.

DINING — All that fresh air and adventure will have visitors needing fuel. There are over 100 restaurants, cafes, pubs and bakeries to choose from throughout Mono County, with options ranging from traditional comfort food to delicious ethnic cuisine and fine dining.

SHOPPING — If you are looking for Macy's, you won't find it in Mono County. Our shopping experience is more about bait, gloves and woolly buggers! However, with approximately 125 stores to browse through, you'll find lots of intriguing shops, art galleries with Eastern Sierra-inspired visions, and Native American crafts and western wear that will bring out everyone's inner Wild West.

WINTER 2017 — Kids 12 and under ski and snowboard FREE all winter at June Mountain, no restrictions!

TOP EASTERN SIERRA ACTIVITIES

SUMMER

Hiking and Backpacking
Fishing and Camping
Mountain Biking and Road Cycling
Kayaking and Canoeing
Stand-up Paddleboarding
Rock Climbing
Horseback Riding
ATVs / Off-Highway Vehicles

WINTER

Skiing and Snowboarding
Cross Country Skiing
Snowshoeing
Snowmobiling
Dog-Sledding
Sledding and Tubing
Ice Skating
Ice Climbing

2017 EVENT HIGHLIGHTS

June Lake Winter Festival	June Lake	March 4
Mammoth Winter Biathlon	Mammoth Lakes	March 18-19
Mono Basin Bird Chautauqua	Lee Vining	June 16-18
Mammoth Motocross	Mammoth Lakes	June 16-25
Old-Fashioned 4th of July	Bridgeport	July 1-4
How Big Is Big Fishing Derby	Walker	July 1-30
June Lake Triathlon	June Lake	July 8
Mammoth Festival of Beers & Bluesapalooza	Mammoth Lakes	August 3-6
Friends of Bodie Day	Bodie	August 12
Founder's Day Celebrations	Bridgeport	September 1-4
Eastern Sierra Kite Festival	Walker	September 23-24
Eastern Sierra ATV/UTV Jamboree	Walker	September 26-30
June Lake Autumn Beer Festival	June Lake	September 30

For the latest news, events info, FREE Visitor Guide, and Mono County Travel Blog – visit us online at www.MonoCounty.org and on Facebook at www.Facebook.com/VisitEasternSierra.

Elected State Representatives:

Assembly member Frank Bigelow 5 th Assembly District State Capitol, Suite #6027 Sacramento, CA 94249-0005 Phone: (916) 319-2005 Fax: (916) 319-2105 Website: https://ad05.asmr.org/	Senator Tom Berryhill 8 th Senate District State Capitol, Room 3076 Sacramento, CA 95814 Phone: (916) 651-4008 Fax: (916) 651-4908 Website: http://berryhill.cssrc.us/
Governor Jerry Brown c/o State Capitol, Suite 1173 Sacramento, CA 95814 Phone: (916) 445-2841 Fax: (916) 558-3160 Website: http://www.gov.ca.gov/home.php	

Elected Congressional Representatives:

Senator Kamala Harris United States Senate 112 Hart Senate Office Building Washington, D.C. 20510 Phone: (202) 224-3553 Fax: (202) 224-0454 Website: http://www.harris.senate.gov/	Senator Dianne Feinstein United States Senate 331 Hart Senate Office Building Washington, D.C. 20510 Phone: (202) 224-3841 Fax: (202) 228-3954 Website: http://www.feinstein.senate.gov/
Congressman Paul Cook 8 th Congressional District 1222 Longworth House Office Building Washington, DC 20515 Phone: (202) 225-5861 Fax: (909)797-4997 Website: http://cook.house.gov/	



County of Mono
Post Office Box 696
Bridgeport, California 93517
(760) 932-5410
www.mono.county.ca.gov

